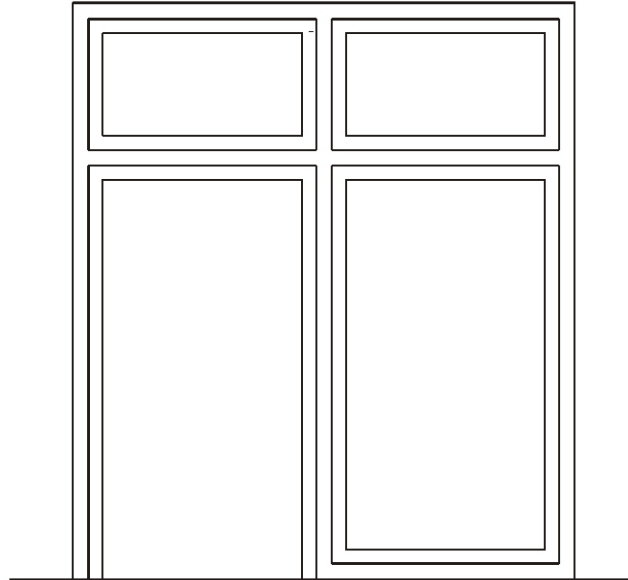
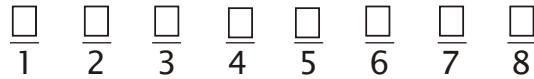


STANDARD STICK SECTIONS

STANDARD LENGTH 10'7"



FORMATTING THE PART DESCRIPTION



① STICK DESIGNATION
S = STICK
M = MULLION

② Z = GALVANEALLED
(IF NO DESIGNATION
THEN CR)

③ 4 = PREP ON 400 SIDE
8 = PREP ON 800 SIDE
DESIGNATE 14 OR 16 GAUGE

④ PROFILE

⑤ LETTER HDWE PREPARATION
BS = BLANK STICK BM = BLANK MULLION
HS = HINGE STICK HM = HINGE MULLION
SS = STRIKE STICK SM = STRIKE MULLION
CS = CASEDOPEN STICK BP = BASE PANEL
HA = HAT HAC = CASEDOPEN HAT

⑥ HINGE PREP LAYOUT
68 = 6'8"
70 = 7'0"

⑦ NOMINAL LENGTH
107 = 10'7"

⑧ HAND
L = LEFT
R = RIGHT

USE THE APPROPRIATE SYMBOL AS DESIGNATED
ABOVE FOR POSITIONS 1 THRU 8.

EXAMPLE

$\frac{S}{1}$ $\frac{Z}{2}$ $\frac{416}{3}$ $\frac{5\frac{3}{4}}{4}$ $\frac{HS}{5}$ $\frac{70}{6}$ $\frac{107}{7}$ $\frac{R}{8}$