

# **COMPETITOR'S STANDARD HINGE LOCATIONS**

# TECHNICAL DATA SERIES

## 3 1/2" HINGE & STRIKE COMPARISON - 1 3/8"

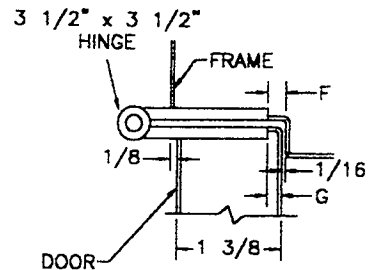
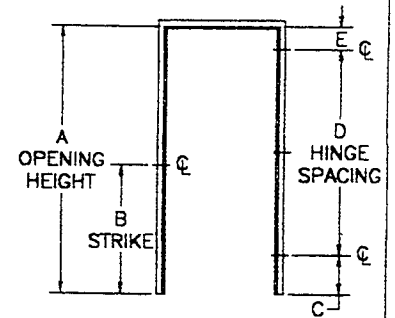
MANUFACTURER	A	B	C	D	E	F	G
AMWELD	6'-8"	40 5/16"	10 3/8"	59 7/8"	9 3/4"	5/16"	1/4"
	6'-10"		12 3/8"	59 7/8"			
	7'-0"		14 3/8"	59 7/8"			
	7'-2"		16 3/8"	59 7/8"			
	6'-8"		10 3/8"	2 @ 29 15/16"			
	6'-10"		12 3/8"	2 @ 29 15/16"			
	7'-0"		14 3/8"	2 @ 29 15/16"			
	7'-2"		16 3/8"	2 @ 29 15/16"			
CECO (1)	6'-8"	40 5/16"	10 3/8"	2 @ 29 15/16"	9 3/4"	5/16"	N/A
	7'-0"		2 @ 31 15/16"				
	7'-2"		2 @ 32 15/16"				
COPCO	6'-8"	40 5/16"	10 3/8"	2 @ 29 15/16"	9 3/4"	5/16"	7/32"
	6'-10"			2 @ 30 15/16"			
	7'-0"			2 @ 31 15/16"			
	7'-2"			2 @ 32 15/16"			
	7'-4"			2 @ 33 15/16"			
	7'-6"			2 @ 34 15/16"			
	7'-8"			3 @ 23 19/64"			
	7'-10"			3 @ 24 19/64"			
	8'-0"			3 @ 25 19/64"			
	CURRIES (2)			6'-8"			
6'-10"		2 @ 30 15/16"					
7'-0"		2 @ 31 15/16"					
7'-2"		2 @ 32 15/16"					
7'-4"		2 @ 33 15/16"					
7'-6"		2 @ 34 15/16"					
7'-8"		3 @ 24"					
7'-10"		3 @ 24 5/8"					
8'-0"	3 @ 25 3/8"						
DEANSTEEL	6'-8"	40 5/16"	11 3/4"	61 1/2"	6 3/4"	5/16"	1/4"
	6'-10"			2 @ 31 3/4"			
	7'-0"			2 @ 32 3/4"			
	7'-2"			2 @ 33 3/4"			
KEWANEE	6'-8"	40 5/16"	10 1/4"	60 1/8"	9 5/8"	1/4"	3/16"
	6'-10"			62 1/8"			
	7'-0"			2 @ 32 1/16"			
	7'-2"			2 @ 33 1/16"			
	7'-4"			2 @ 34 1/16"			
	7'-6"			2 @ 35 1/16"			
	7'-8"			3 @ 24 1/16", 24", 24 1/16"			
	7'-10"			3 @ 24 11/16", 24 3/4", 24 11/16"			
8'-0"	3 @ 25 3/8"						
MESKER (2)	6'-8"	40 5/16"	11 3/4"	61 1/2"	6 3/4"	1/4"	3/16"
	7'-0"			2 @ 32 3/4"			
	7'-2"			2 @ 33 3/4"			
PIONEER	6'-8"	38"	11 3/4"	2 @ 30 3/4"	6 3/4"	5/16"	7/32"
	6'-10"		11 3/4"	2 @ 31 3/4"			
	7'-0"		11 3/4"	2 @ 32 3/4"			
	7'-2"		11 3/4"	2 @ 33 3/4"			
	7'-4"		11 3/4"	2 @ 34 3/4"			
	7'-6"		11 13/16"	3 @ 23 13/16"			
	7'-8"		11 3/4"	3 @ 24 1/2"			
	7'-10"		11 11/16"	3 @ 25 3/16"			
8'-0"	11 13/16"	3 @ 25 13/16"					
REPUBLIC	6'-8"	40 5/16"	10 3/8"	2 @ 29 15/16"	9 3/4"	5/16"	1/4"
	6'-10"		12 1/4"	2 @ 31 1/4"			
	7'-0"		12 3/8"	2 @ 29 15/16"			
	7'-2"		12 3/8"	2 @ 30 15/16"			
	7'-4"		12 1/4"	2 @ 34 1/4"			
	7'-6"		12 1/4"	2 @ 35 1/4"			
	7'-8"		12 3/8"	3 @ 24 1/8"			
	7'-10"		12 1/8"	3 @ 24 7/8"			
	8'-0"		12 1/4"	3 @ 25 1/2"			
STEELCRAFT	6'-8"	40 5/16"	10 3/8"	59 7/8"	9 3/4"	5/16"	1/4"
	7'-0"			2 @ 31 15/16"			
	7'-2"			2 @ 32 15/16"			
	7'-10"			3 @ 24 5/8"			
	8'-0"			3 @ 25 19/64"			

# TECHNICAL DATA SERIES S-415

## 3 1/2" HINGE & STRIKE COMPARISON - 1 3/8"

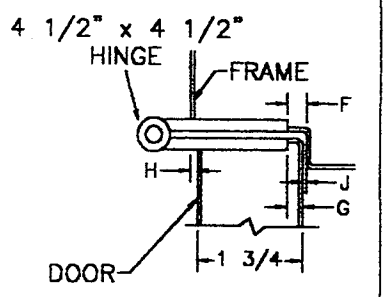
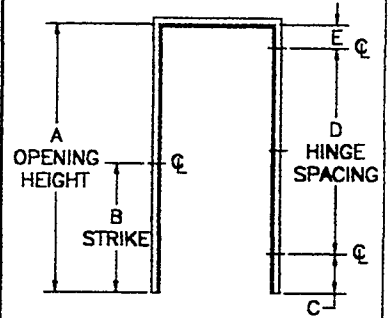
(1) Does not manufacture 1 3/8" thick steel doors. Steel frames are manufactured for 1 3/8" thick wood doors.

(2) Doors of all heights are also available with two hinges. C & E dimensions are same as shown.



MANUFACTURER	A	B	C	D	E	F	G	H	J
<b>AMWELD</b>	6'-8" 6'-10" 7'-0" 7'-2" 7'-4" 7'-6" 7'-8" 7'-10" 8'-0"	40 5/16"	10 3/8" 8 3/8" 10 3/8" 12 3/8" 10 3/8" 12 3/8" 10 7/16" 8 5/16" 10 5/16"	2 @ 29 15/16" 2 @ 31 15/16" 2 @ 31 15/16" 2 @ 31 15/16" 2 @ 33 15/16" 2 @ 33 15/16" 3 @ 23 15/16" 3 @ 25 5/16" 3 @ 25 5/16"	9 3/4"	5/16"	3/16"	1/16"	1/8"
<b>BENCHMARK</b>	6'-8" 6'-10" 7'-0" 7'-2" 7'-4" 7'-6" 7'-8" 7'-10" 8'-0"	40 5/16"	12 1/4" 14 1/4" 12 1/4" 14 1/4" 12 1/4" 14 1/4" 8 1/4" 10 1/4" 12 1/4"	2 @ 30 1/4" 2 @ 30 1/4" 2 @ 32 1/4" 2 @ 32 1/4" 2 @ 34 1/4" 2 @ 34 1/4" 3 @ 25 1/2" 3 @ 25 1/2" 3 @ 25 1/2"	7 1/4"	11/32"	1/4"	1/8"	3/32"
<b>CECO</b>	6'-8" 6'-10" 7'-0" 7'-2" 7'-4" 7'-6" 7'-8" 7'-10" 8'-0"	41 13/16"	9"	2 @ 31" 2 @ 32" 2 @ 33" 2 @ 34" 2 @ 35" 2 @ 36" 3 @ 24 21/32" 3 @ 25 21/64" 3 @ 26"	9"	5/16"	1/4"	1/8"	1/16"
<b>COPCO</b>	6'-8" 6'-10" 7'-0" 7'-2" 7'-4" 7'-6" 7'-8" 7'-10" 8'-0"	40 5/16"	10 3/8"	2 @ 29 15/16" 2 @ 30 15/16" 2 @ 31 15/16" 2 @ 32 15/16" 2 @ 33 15/16" 2 @ 34 15/16" 3 @ 23 19/64" 3 @ 24 19/64" 3 @ 25 19/64"	9 3/4"	5/16"	7/32"	1/32"	3/32"
<b>CURRIES</b>	6'-8" 6'-10" 7'-0" 7'-2" 7'-4" 7'-6" 7'-8" 7'-10" 8'-0"	40"	12 1/4"	2 @ 30 1/4" 2 @ 31 1/4" 2 @ 32 1/4" 2 @ 33 1/4" 2 @ 34 1/4" 2 @ 35 1/4" 3 @ 24 1/8" 3 @ 24 7/8" 3 @ 25 1/2"	7 1/4"	5/16"	1/4"	1/8"	1/16"
<b>DEANSTEEL</b>	6'-8" 6'-10" 7'-0" 7'-2" 7'-4" 7'-6" 7'-8" 7'-10" 8'-0"	40 5/16"	12 1/4"	2 @ 30 1/4" 2 @ 31 1/4" 2 @ 32 1/4" 2 @ 33 1/4" 2 @ 34 1/4" 2 @ 35 1/4" 24 1/8", 24 1/4", 24 1/8" 24 7/8", 24 3/4", 24 7/8" 3 @ 25 1/2"	7 1/4"	5/16"	1/4"	1/8"	1/16"
<b>KEWANEE</b>	6'-8" 6'-10" 7'-0" 7'-2" 7'-4" 7'-6" 7'-8" 7'-10" 8'-0"	40 5/16"	10 1/4"	2 @ 30 1/16" 2 @ 31 1/16" 2 @ 32 1/16" 2 @ 33 1/16" 2 @ 34 1/16" 2 @ 35 1/16" 24 1/16", 24", 24 1/16" 24 11/16", 24 3/4", 24 11/16" 3 @ 25 3/8"	9 5/8"	3/8"	1/4"	1/16"	1/8"
<b>MESKER</b>	6'-8" 6'-10" 7'-0" 7'-2" 7'-4" 7'-6" 7'-8" 7'-10" 8'-0"	40 5/16"	12 1/4" 12 1/4" 12 1/4" 12 1/4" 12 1/4" 12 1/4" 11 1/4" 10 1/4" 12 1/4"	2 @ 30 1/4" 2 @ 31 1/4" 2 @ 32 1/4" 2 @ 33 1/4" 2 @ 34 1/4" 2 @ 35 1/4" 3 @ 24 1/2" 3 @ 25 1/2" 3 @ 25 1/2"	7 1/4"	5/16"	1/4"	1/8"	1/16"
<b>PIONEER</b>	6'-8" 6'-10" 7'-0" 7'-2" 7'-4" 7'-6" 7'-8" 7'-10" 8'-0"	38"	12 1/4" 12 1/4" 12 1/4" 12 1/4" 12 1/4" 12 1/4" 12 3/16" 12 5/16" 12 1/4"	2 @ 30 1/4" 2 @ 31 1/4" 2 @ 32 1/4" 2 @ 33 1/4" 2 @ 34 1/4" 3 @ 23 1/2" 3 @ 24 3/16" 3 @ 24 13/16" 3 @ 25 1/2"	7 1/4"	5/16"	7/32"	3/32"	3/32"
<b>REPUBLIC</b>	6'-8" 6'-10" 7'-0" 7'-2" 7'-4" 7'-6" 7'-8" 7'-10" 8'-0"	40 5/16"	10 3/8" 12 1/4" 12 3/8" 12 3/8" 12 1/4" 12 1/4" 12 3/8" 12 1/8" 12 1/4"	2 @ 29 15/16" 2 @ 31 1/4" 2 @ 29 15/16" 2 @ 30 15/16" 2 @ 34 1/4" 2 @ 35 1/4" 3 @ 24 1/8" 3 @ 24 7/8" 3 @ 25 1/2"	9 3/4" 7 1/4" 11 3/4" 11 3/4" 7 1/4" 7 1/4" 7 1/4" 7 1/4" 7 1/4"	5/16"	1/4"	1/8"	1/16"
<b>STEELCRAFT</b>	6'-8" 6'-10" 7'-0" 7'-2" 7'-4" 7'-6" 7'-8" 7'-10" 8'-0"	40 5/16"	10 3/8"	2 @ 29 15/16" 2 @ 30 15/16" 2 @ 31 15/16" 2 @ 32 15/16" 2 @ 33 15/16" 2 @ 34 15/16" 3 @ 23 61/64" 3 @ 24 5/8" 3 @ 25 19/64"	9 3/4"	5/16"	1/4"	1/8"	1/16"

**TECHNICAL DATA  
SERIES  
S-415  
4 1/2" HINGE & STRIKE  
COMPARISON - 1 3/4"**



MANUFACTURER	A	B	C	D	E	F	G	H	J
AMWELD	6'-8"	40 5/16"	10 3/8"	2 @ 29 15/16"	9 3/4"	5/16"	3/16"	1/16"	1/8"
	6'-10"		8 3/8"	2 @ 31 15/16"					
	7'-0"		10 3/8"	2 @ 31 15/16"					
	7'-2"		12 3/8"	2 @ 31 15/16"					
	7'-4"		10 3/8"	2 @ 33 15/16"					
	7'-6"		12 3/8"	2 @ 33 15/16"					
	7'-8"		10 7/16"	3 @ 23 15/16"					
	7'-10"		8 5/16"	3 @ 25 5/16"					
	8'-0"		10 5/16"	3 @ 25 5/16"					
CECO	6'-8"	41 13/16"	9"	2 @ 31"	9"	5/16"	1/4"	1/8"	1/16"
	6'-10"			2 @ 32"					
	7'-0"			2 @ 33"					
	7'-2"			2 @ 34"					
	7'-4"			2 @ 35"					
	7'-6"			2 @ 36"					
	7'-8"			3 @ 24 21/32"					
	7'-10"			3 @ 25 21/64"					
	8'-0"			3 @ 26"					
COPCO	6'-8"	40 5/16"	10 3/8"	2 @ 29 15/16"	9 3/4"	5/16"	7/32"	1/32"	3/32"
	6'-10"			2 @ 30 15/16"					
	7'-0"			2 @ 31 15/16"					
	7'-2"			2 @ 32 15/16"					
	7'-4"			2 @ 33 15/16"					
	7'-6"			2 @ 34 15/16"					
	7'-8"			3 @ 23 19/64"					
	7'-10"			3 @ 24 19/64"					
	8'-0"			3 @ 25 19/64"					
CURRIES	6'-8"	40"	12 1/4"	2 @ 30 1/4"	7 1/4"	5/16"	1/4"	1/8"	1/16"
	6'-10"			2 @ 31 1/4"					
	7'-0"			2 @ 32 1/4"					
	7'-2"			2 @ 33 1/4"					
	7'-4"			2 @ 34 1/4"					
	7'-6"			2 @ 35 1/4"					
	7'-8"			3 @ 24 1/8"					
	7'-10"			3 @ 24 7/8"					
	8'-0"			3 @ 25 1/2"					
DEANSTEEL	6'-8"	40 5/16"	12 1/2"	2 @ 30"	7 1/2"	5/16"	1/4"	1/8"	1/16"
	6'-10"			2 @ 31"					
	7'-0"			2 @ 32"					
	7'-2"			2 @ 33"					
	7'-4"			2 @ 34"					
	7'-6"			2 @ 35"					
	7'-8"			3 @ 24"					
	7'-10"			24 5/8", 24 3/4", 24 5/8"					
	8'-0"			25 3/8", 25 1/4", 25 3/8"					
KEWANEE	6'-8"	40 5/16"	10 1/4"	2 @ 30 1/16"	9 5/8"	3/8"	1/4"	1/16"	1/8"
	6'-10"			2 @ 31 1/16"					
	7'-0"			2 @ 32 1/16"					
	7'-2"			2 @ 33 1/16"					
	7'-4"			2 @ 34 1/16"					
	7'-6"			2 @ 35 1/16"					
	7'-8"			24 1/16", 24", 24 1/16"					
	7'-10"			24 11/16", 24 3/4", 24 11/16"					
	8'-0"			3 @ 25 3/8"					
MESKER	6'-8"	40 5/16"	12 1/4"	2 @ 30 1/4"	7 1/4"	5/16"	1/4"	1/8"	1/16"
	6'-10"		12 1/4"	2 @ 31 1/4"					
	7'-0"		12 1/4"	2 @ 32 1/4"					
	7'-2"		12 1/4"	2 @ 33 1/4"					
	7'-4"		12 1/4"	2 @ 34 1/4"					
	7'-6"		12 1/4"	2 @ 35 1/4"					
	7'-8"		11 1/4"	3 @ 24 1/2"					
	7'-10"		10 1/4"	3 @ 25 1/2"					
	8'-0"		12 1/4"	3 @ 25 1/2"					
PIONEER	6'-8"	38"	12 1/2"	2 @ 30"	7 1/2"	5/16"	7/32"	3/32"	3/32"
	6'-10"		12 1/2"	2 @ 31"					
	7'-0"		12 1/2"	2 @ 32"					
	7'-2"		12 1/2"	2 @ 33"					
	7'-4"		12 1/2"	2 @ 34"					
	7'-6"		12 9/16"	3 @ 23 5/16"					
	7'-8"		12 1/2"	3 @ 24"					
	7'-10"		12 5/8"	3 @ 24 5/8"					
	8'-0"		12 9/16"	3 @ 25 5/16"					
REPUBLIC	6'-8"	40 5/16"	10 3/8"	2 @ 29 15/16"	9 3/4"	5/16"	1/4"	1/8"	1/16"
	6'-10"		12 1/4"	2 @ 31 1/4"					
	7'-0"		12 3/8"	2 @ 29 15/16"					
	7'-2"		12 3/8"	2 @ 30 15/16"					
	7'-4"		12 1/4"	2 @ 34 1/4"					
	7'-6"		12 1/4"	2 @ 35 1/4"					
	7'-8"		12 3/8"	3 @ 24 1/8"					
	7'-10"		12 1/8"	3 @ 24 7/8"					
	8'-0"		12 1/4"	3 @ 25 1/2"					
STEELCRAFT	6'-8"	40 5/16"	10 3/8"	2 @ 29 15/16"	9 3/4"	5/16"	1/4"	1/8"	1/16"
	6'-10"			2 @ 30 15/16"					
	7'-0"			2 @ 31 15/16"					
	7'-2"			2 @ 32 15/16"					
	7'-4"			2 @ 33 15/16"					
	7'-6"			2 @ 34 15/16"					
	7'-8"			3 @ 23 61/64"					
	7'-10"			3 @ 24 5/8"					
	8'-0"			3 @ 25 19/64"					

**TECHNICAL DATA  
SERIES  
S-414  
5" HINGE & STRIKE  
COMPARISON - 1 3/4"**

