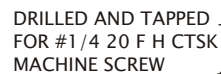
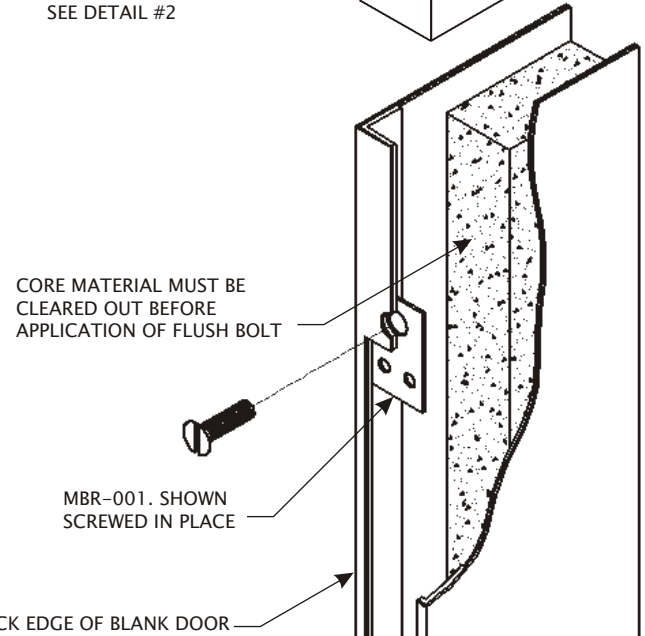
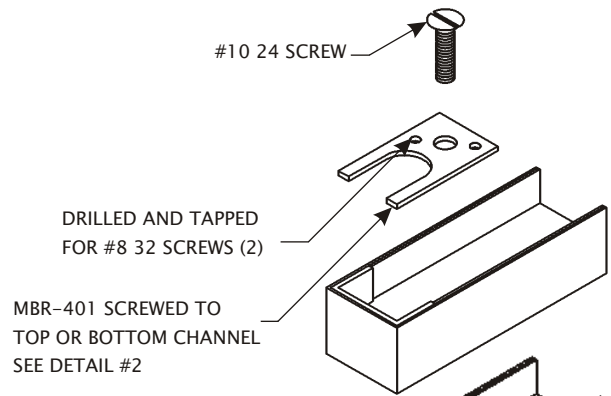
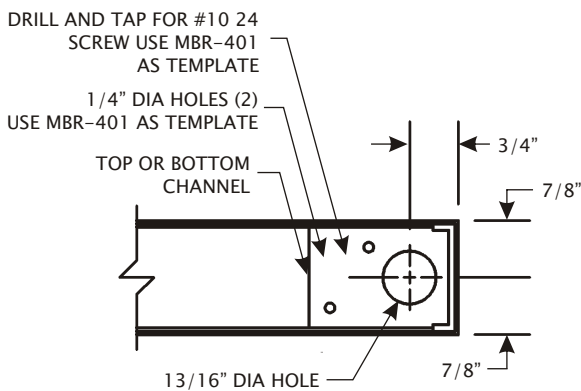
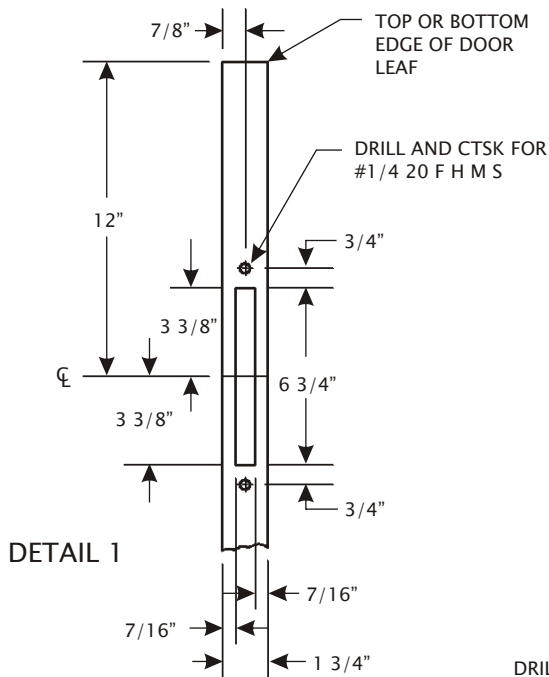


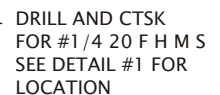
TECHNICAL DATA SHEET

DS-155

ANSI - 115.4 FLUSH BOLT PREPARATION NO ASTRAGAL 1 3/4" DOORS



SWINGERDOOR NOTE: TO FULLY MORTISE FLUSH BOLT, MBR-001 MUST HAVE SPACER ATTACHED BEFORE SECURING TO DOOR SPACER THICKNESS VARIES WITH FACE SHEET GAUGE



HARDWARE
January 2007



MESKER

www.meskerdoor.com
256-851-6670, 256-852-5846