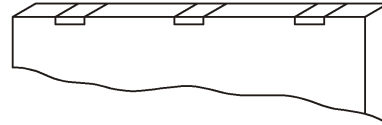


TECHNICAL DATA SHEET

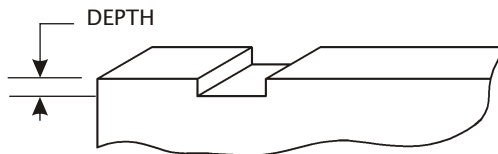
DS-111R

INSTALLING HINGES IN A BLANK DOOR EDGE

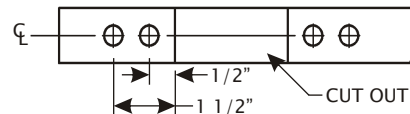
LAY OUT THE DESIRED HINGE LOCATION ON THE DOOR EDGE. USE A HG. BUTT TO INSURE PROPER CLEARANCE.



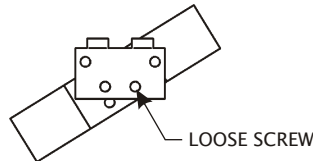
MAKE THE CUT-CUTS WITH A "JIG" SAW. GRIND OR FILE AS REQUIRED. ALL EDGES MUST BE FINISHED: ALSO ALLOW FOR HG. FILLER PLATE AT PROPER DEPTH (.180A FOR STD. WT. HINGE AND FILLER)



DRILL TWO 3/8" DIAMETER HOLES ABOVE AND BELOW EACH CUT-OUT. AS SHOWN.

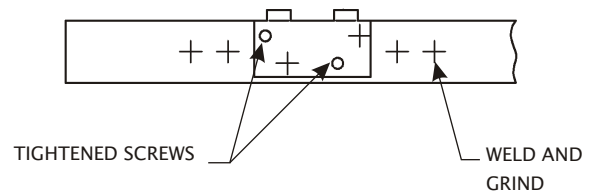


ATTACH A HINGE BUTT LEAF AND HG. FILLER PLATE TO THE REINFORCEMENT WITH ONE SCREW. TIGHTEN ONLY TWO THREADS SO THE REINFORCEMENT CAN BE PLACED INSIDE THE DOOR AND SLIPPED UP AND DOWN UNTIL IT IS POSITIONED.



NOTE: IF A MESKER HINGE REINFORCEMENT IS TO BE USED YOU MUST FIRST REMOVE THE WELD PROJECTIONS. (GRIND OR FILE.) THE HG. REINFORCEMENT MUST BE CENTERED IN DOOR, BETWEEN FACES.

INSTALL A SECOND SCREW AND TIGHTEN BOTH SCREWS. FIRMLY HOLD THE REINFORCEMENT AGAINST THE INSIDE SKIN OF THE DOOR EDGE. FULLY WELD (FILL) THE 3/8" DIAMETER HOLES. REMOVE THE HINGE BUTT. GRIND THE WELDS SMOOTH AND RE-PRIME.



January 2007



MESKER

www.meskerdoor.com
256-851-6670, 256-852-5846