

### BULLET RESISTANT DOORS 1 3/4"

1. Doors shall be manufactured by Mesker Door Incorporated and designated as Bullet Resistant Level III.

BR( ) 414 - 14 GAUGE 1 3/4" BULLET RESISTANT

( )=Core designation - "P" - Polystyrene

2. Core material shall be Polystyrene as called for on Plans.

3. Doors shall be seamless constructed of two face sheets and 1 inner sheet of 14 gauge cold rolled steel, stretcher-levelled quality of flatness.

4. Doors shall have a box type closer reinforcement factory installed to reinforce both sides of doors.

5. Doors shall have 16 gauge top and bottom channels welded to door skins on 4" centers.

6. Doors shall be mortised and adequately reinforced for all hardware. Mortised hardware reinforcements shall be drilled and tapped at the factory. Surface applied hardware shall be field drilled by others.

7. This door must be purchased with bullet resistant frame.

8. Doors shall be bonderized and phosphatized inside and out and receive a factory coat of prime paint.



# TECHNICAL DATA SHEET

**DS-104-2**

## BULLET RESISTANT DOOR – 14 GAUGE ENGINEERING DATA – CORE MATERIALS

CORE MATERIALS	POLYSTYRENE	HONEYCOMB
PHYSICAL PROPERTIES DENSITY	1.4 PCF	1.2 PCF
COMP. STRENGTH	23 PSI	30 PSI
COEF. OF EXP./°F	<1 1/2%/VOL.	N/A
SOUND TRANSMISSION (STC) 20 GA. FACE SHEETS	25	30
18 GA. FACE SHEETS	27	31
THERMAL PROPERTIES "R" FACTOR	.22	1.0
"U" FACTOR	.20	.41
FIRE HAZARD CLASS. FUEL CONTRIBUTED	0	N/A
SMOKE DEVELOPED	50-85	N/A
SERVICE TEMPERATURE RANGE	-65° - 165°F	-65° - 200°F

### STANDARD HARDWARE PREPARATIONS

Lock Preparation – Government 161 cylindrical lock (2 3/4 backset) reinforced as in detail G1, DS-113. Government 86 mortise lock (2 3/4 backset) reinforced as in detail G2, DS-113.

Hinge Preparations – 4 1/2" x 4 1/2" standard weight template hinges, 1 1/2" pair on 6'8", 7'0" and 7'2" doors, 2 pair on 7'10" and 8'0" doors.

Surface Mounted Hardware – Doors are factory reinforced for surface mounted hardware when specified. Mounting holes are drilled and tapped in field by others.

Universal Handing – Bullet Doors will fit both right and left hand openings due to the double hole pattern and reversible hinge filler plate.

Pairs of Doors – Pairs of doors may be supplied with astragals when specified. See DS-157 for details.

Packaging – Each door is packed in individual corrugated cardboard cartons clearly identified as to its contents.

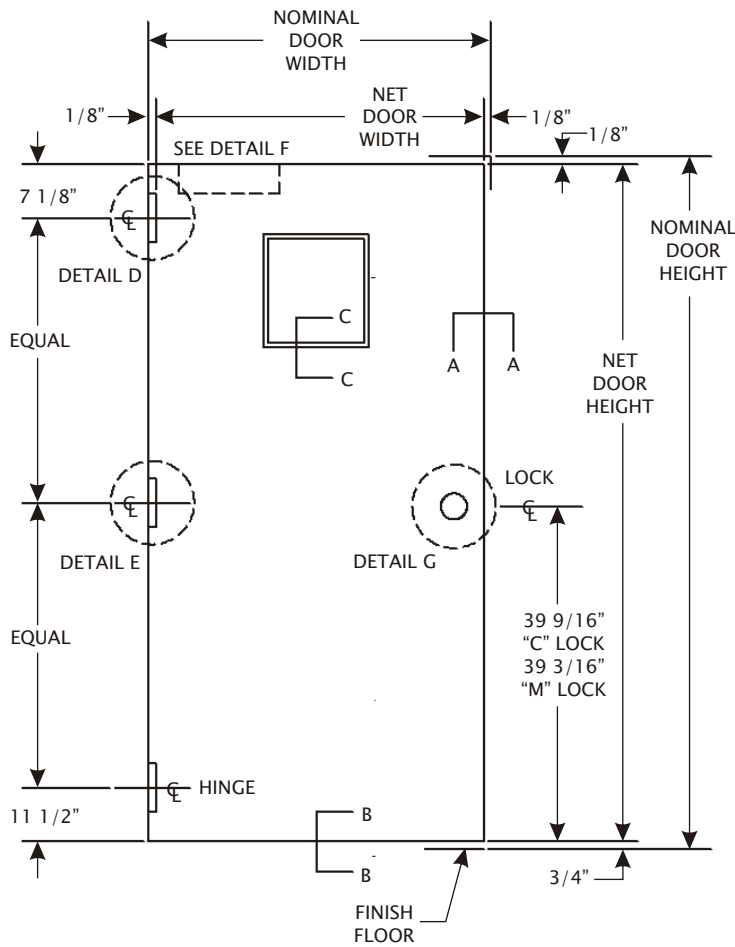
**BULLET RESISTANT**  
**January 2007**



**MESKER**  
www.meskerdoor.com  
256-851-6670, 256-852-5846

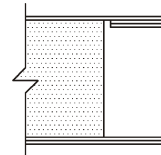
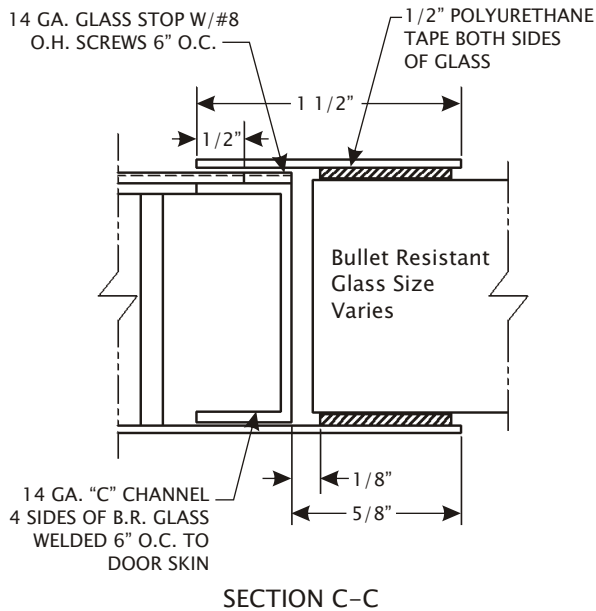
# TECHNICAL DATA SHEET

## DS-104-3



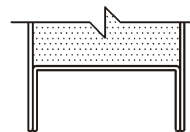
STANDARD DOOR WIDTHS	
NOMINAL DOOR WIDTHS	NET DOOR WIDTHS
2'-0"	23 3/4"
2'-4"	27 3/4"
2'-6"	29 3/4"
2'-8"	31 3/4"
3'-0"	35 3/4"
3'-4"	39 3/4"
3'-6"	41 3/4"
3'-8"	43 3/4"
3'-10"	45 3/4"
4'-0"	47 3/4"

STANDARD DOOR HEIGHTS	
NOMINAL DOOR HEIGHTS	NET DOOR HEIGHTS
6-8"	79 1/8"
7'-0"	83 1/8"
7'-2"	85 1/8"
7'-10"	93 1/8"
8'-0"	95 1/8"



SECTION A-A

THE WRAP AROUND FACE SHEETS ARE BACKED BY A HEAVY CONTINUOUS CHANNEL ON THE VERTICAL EDGES. THE SEAMLESS EDGES ARE WELDED AND FILLED.



SECTION B-B

16 GAUGE TOP AND BOTTOM CHANNEL

**BULLET RESISTANT**  
January 2007



**MESKER**  
www.meskerdoor.com  
256-851-6670, 256-852-5846