

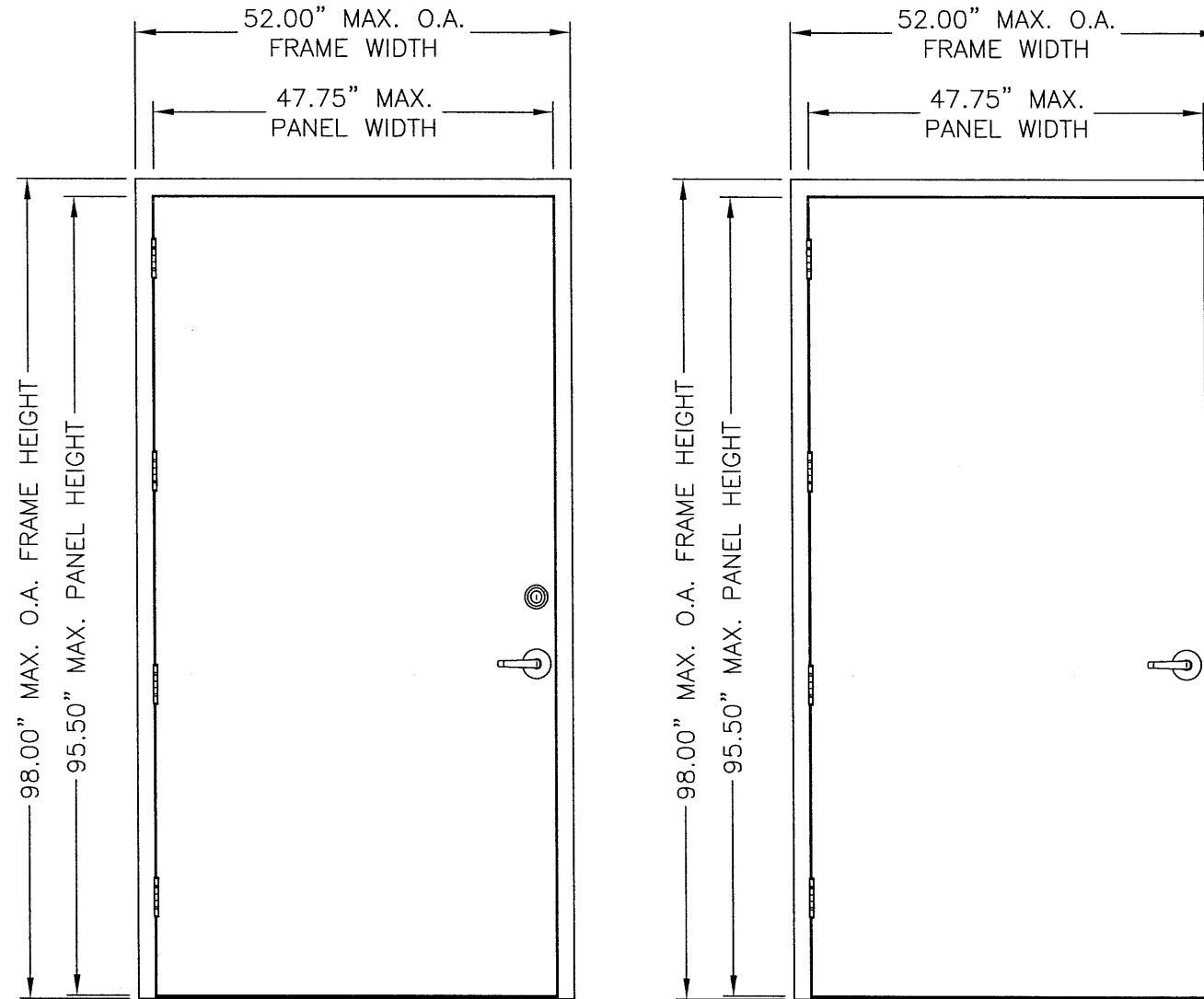
MESKER DOOR INC.

3440 STANWOOD BLVD.
HUNTSVILLE, AL. 35811
Phone: 256-851-6670

SINGLE OPAQUE DOOR "NON-IMPACT" OUTSWING

GENERAL NOTES

1. THIS PRODUCT HAS BEEN EVALUATED AND IS IN COMPLIANCE WITH THE 2004 FLORIDA BUILDING CODE STRUCTURAL REQUIREMENTS EXCLUDING THE "HIGH VELOCITY HURRICANE ZONE".
2. PRODUCT ANCHORS SHALL BE AS LISTED AND SPACED AS SHOWN ON DETAILS. ANCHOR EMBEDMENT TO BASE MATERIAL SHALL BE BEYOND WALL DRESSING OR STUCCO.
3. WHEN USED IN AREAS REQUIRING WIND-BORNE DEBRIS PROTECTION THIS PRODUCT IS REQUIRED TO BE PROTECTED WITH AN IMPACT RESISTANT COVERING THAT COMPLIES WITH SECTION 1609.1.4 OF THE FLORIDA BUILDING CODE.
4. CONDITIONS NOT COVERED BY THIS DRAWING ARE SUBJECT TO FURTHER ENGINEERING ANALYSIS.



N & D DOOR

N & D DOOR

TABLE OF CONTENTS	
SHEET #	DESCRIPTION
1	TYPICAL ELEVATIONS, DESIGN PRESSURES & GENERAL NOTES
2	DOOR PANEL DETAILS (D PANEL)
3	DOOR PANEL DETAILS (N PANEL)
4	HORIZONTAL CROSS SECTIONS
5	HORIZONTAL CROSS SECTIONS
6	HORIZONTAL CROSS SECTIONS
7	VERTICAL CROSS SECTIONS
8	ANCHORING LOCATIONS
9	ANCHORING DETAILS
10	COMPONENTS
11	BILL OF MATERIALS & COMPONENTS

DOOR TYPE	OVERALL FRAME DIMENSION	SWING	LOCK TYPE	DESIGN PRESSURE	
				POSITIVE	NEGATIVE
D	52.00" X 98.00"	OUTSWING	161 LATCH & DEADBOLT	+45.0	-45.0
		OUTSWING	SCHLAGE LATCH & DEADBOLT	+45.0	-45.0
		OUTSWING	SCHLAGE LATCH	+45.0	-45.0
N	52.00" X 98.00"	OUTSWING	161 LATCH & DEADBOLT	+45.0	-45.0
		OUTSWING	SCHLAGE LATCH & DEADBOLT	+45.0	-45.0
		OUTSWING	SCHLAGE LATCH	+45.0	-45.0

Documents Prepared By: **RW** BUILDING CONSULTANTS, INC.
P.O. Box 230 Vairico FL. 33595
Phone No.: 813.659.9197

Florida Board of Professional Engineers
Certificate Of Authorization No. 9813
Wendell W. Heney 1-29-07
Wendell W. Heney P.E. No. 54158

PRODUCT: MESKER
N & D PANELS "NON-IMPACT"

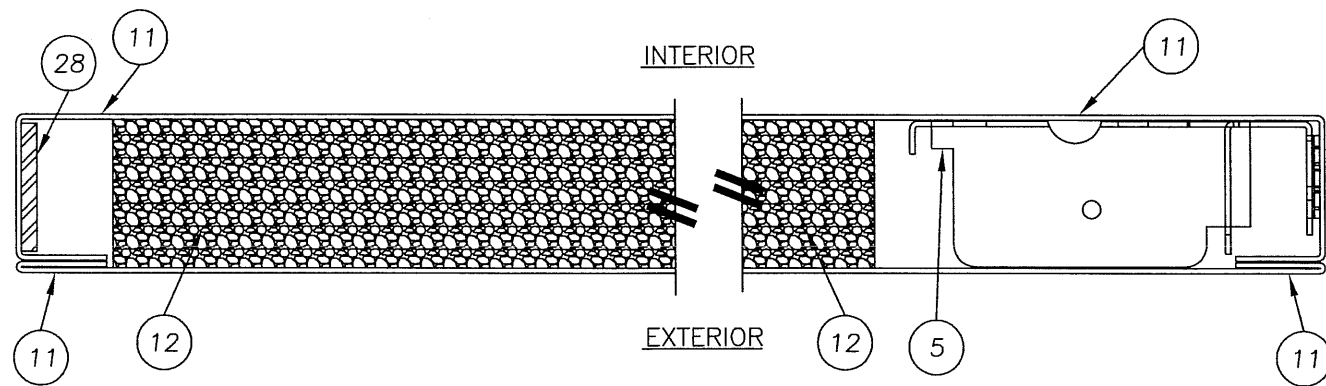
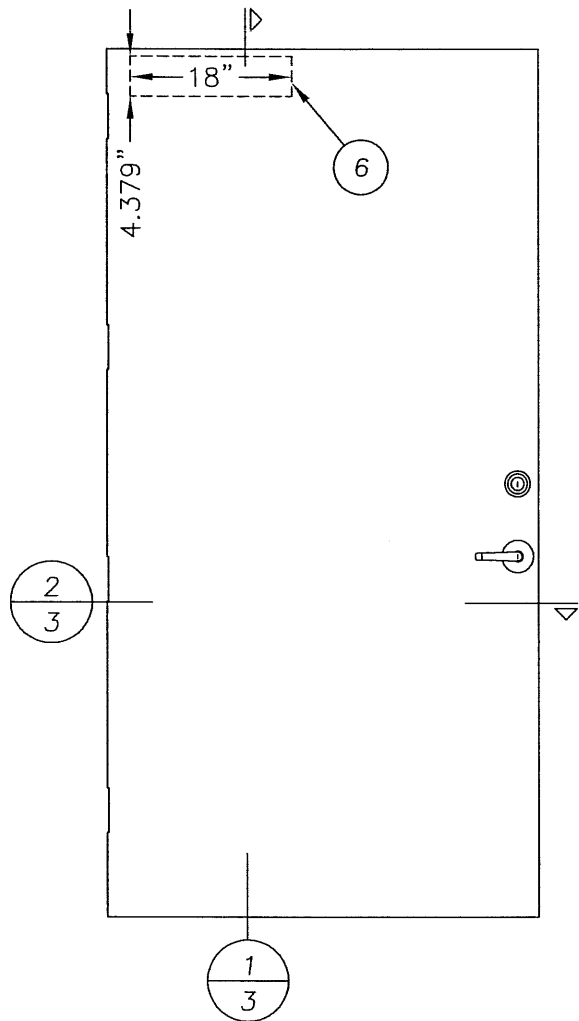
PART OR ASSEMBLY:
TYPICAL ELEVATIONS, DESIGN PRESSURES & GENERAL NOTES

NO.	DATE	BY

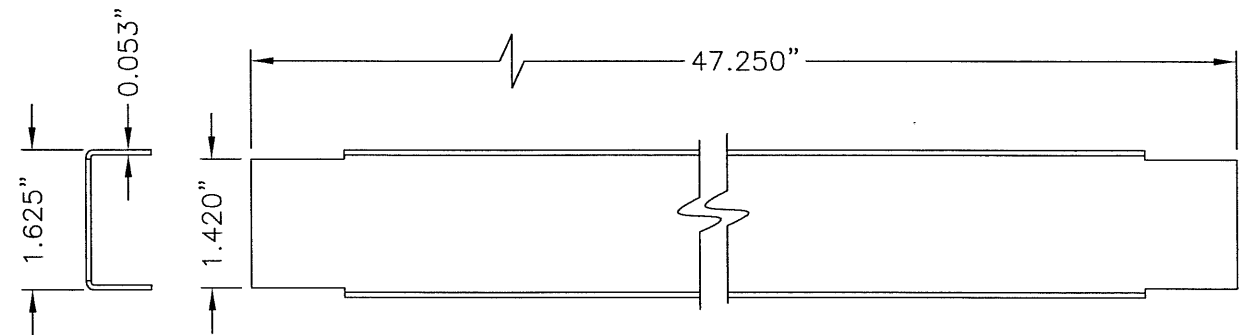
REVISIONS

DATE: 12/13/06
SCALE: N.T.S.
DWG. BY: AEM
CHK. BY: WWH
DRAWING NO.: FL-3294
SHEET 1 OF 11

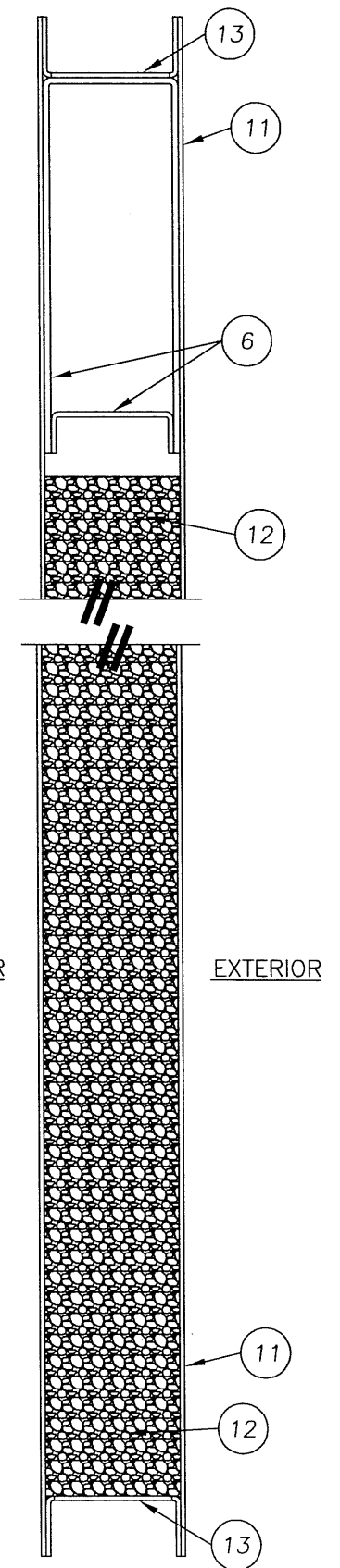
© 2006 R.W. BUILDING CONSULTANTS INC.



2
3 HORIZONTAL CROSS SECTION

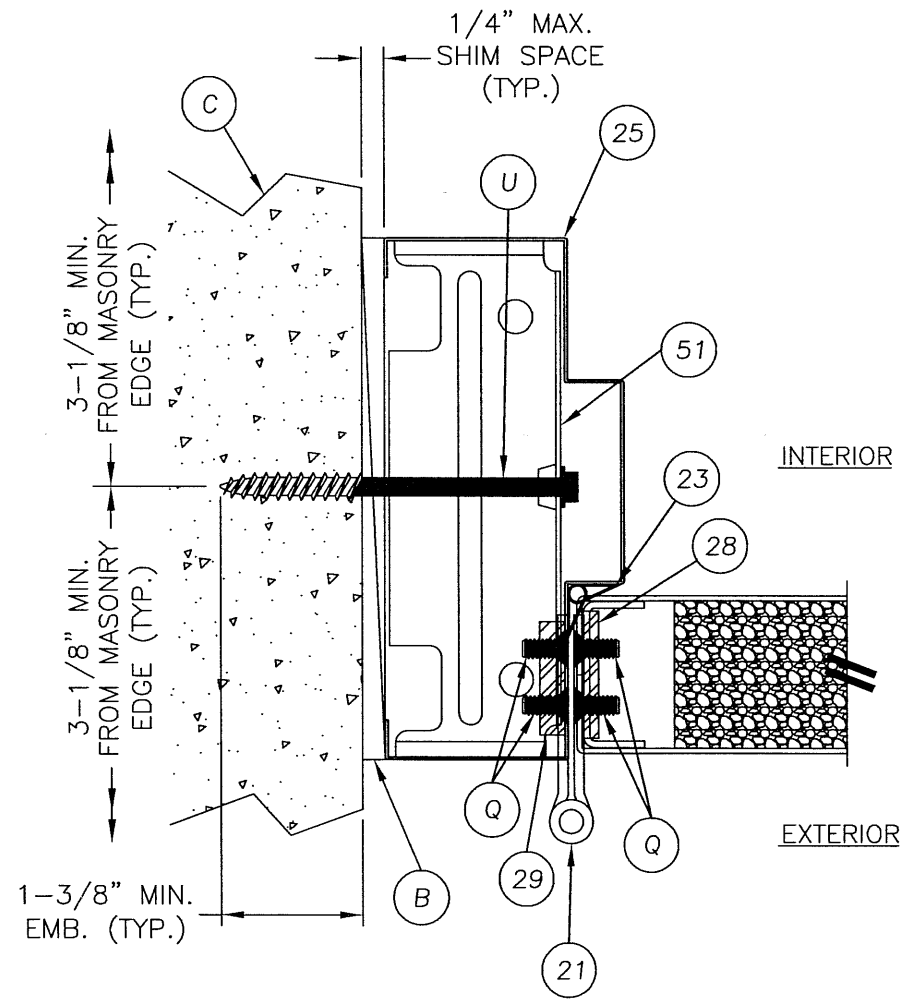


13 DOOR TOP & BOTTOM CLOSER
16GA. (.053) C.R.S.

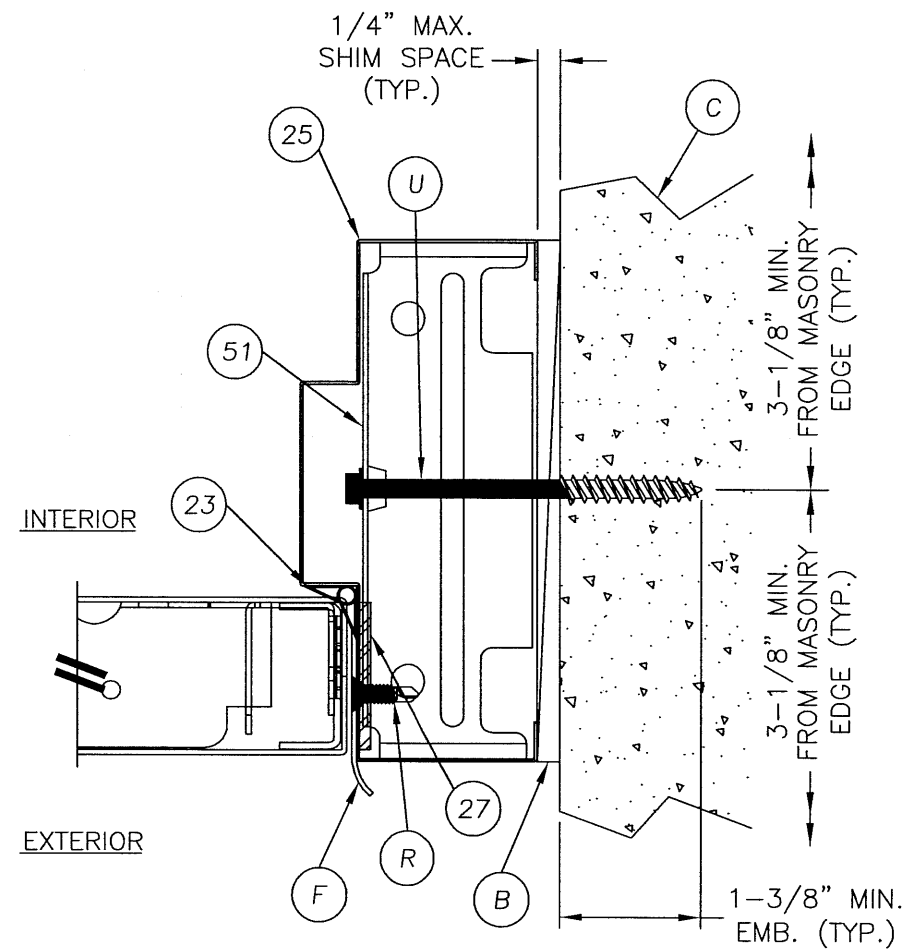


1
3 VERTICAL CROSS SECTION

Documents Prepared By: <i>RW</i> BUILDING CONSULTANTS, INC. P.O. Box 230 Valrico FL 33595 Phone No.: 813.659.9197 Florida Board of Professional Engineers Certificate Of Authorization No. 9813 <i>Wendell W. Hgrey</i> 1-29-07 Wendell W. Hgrey, P.E. No. 54158	
PRODUCT: MESKER N & D PANELS "NON-IMPACT"	PART OR ASSEMBLY: DOOR PANEL DETAILS (N PANEL)
NO. DATE BY	REVISIONS
DATE: 12/13/06 SCALE: N.T.S. DWG. BY: AEM CHK. BY: WWH DRAWING NO.: FL-3294	SHEET 3 OF 11

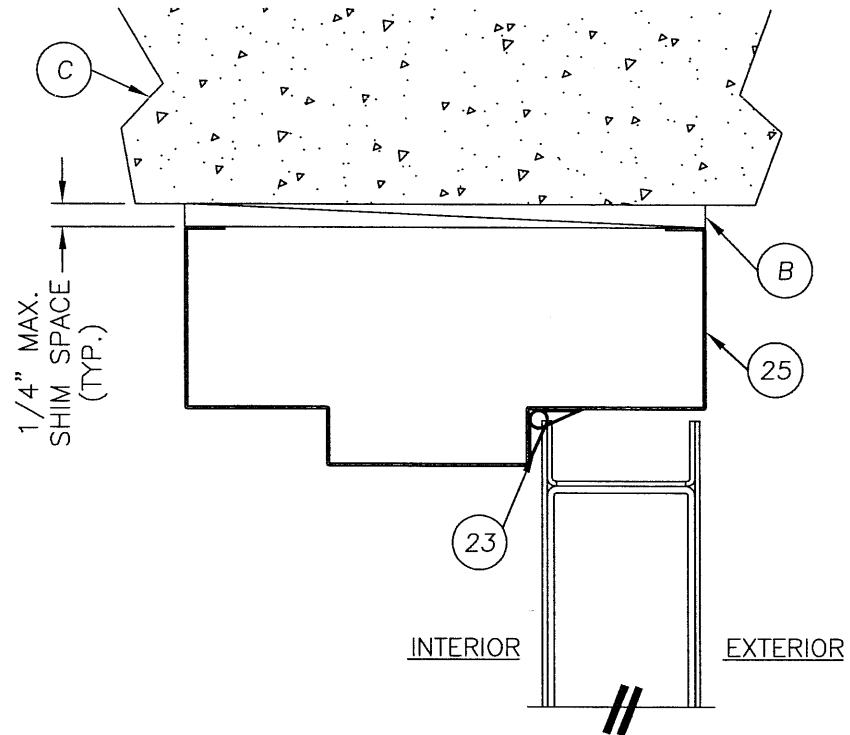


1 HORIZONTAL CROSS SECTION
 6 @ LATCH
 SHOWN WITH UNIVERSAL ANCHOR
 SEE DOOR PANEL DETAILS FOR
 OPTIONAL PANEL TYPES

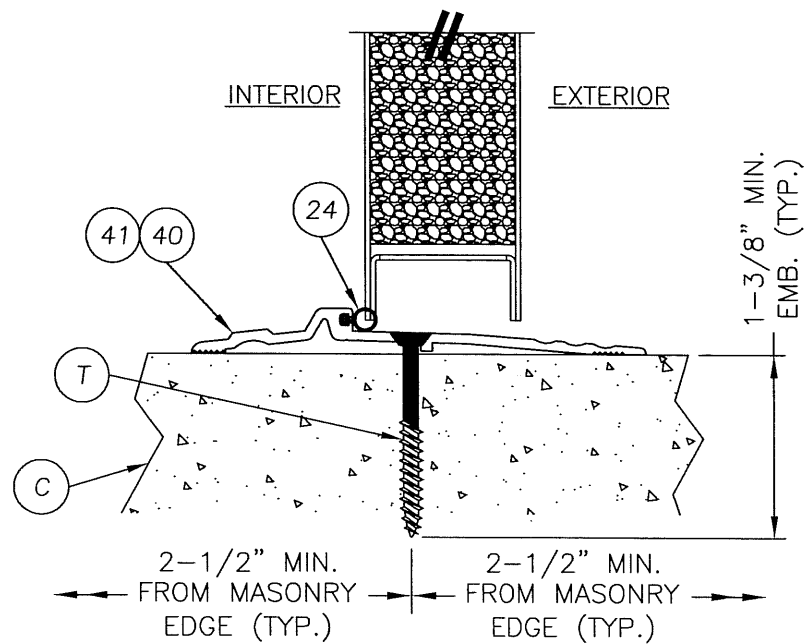


2 HORIZONTAL CROSS SECTION
 6 @ LATCH
 SHOWN WITH UNIVERSAL ANCHOR
 SEE DOOR PANEL DETAILS FOR
 OPTIONAL PANEL TYPES

Documents Prepared By:		BUILDING CONSULTANTS, INC. P.O. Box 230 Valrico FL. 33595 Phone No.: 813.659.9197 Florida Board of Professional Engineers Certificate Of Authorization No. 9813 <i>Wendell W. Honey</i> 1-29-07 Wendell W. Honey, P.E. No. 54158	
PRODUCT:	MESKER N & D PANELS "NON-IMPACT"	HORIZONTAL CROSS SECTIONS	
PART OR ASSEMBLY:		REVISIONS	
		NO.	DATE
		BY	
DATE: 12/13/06			
SCALE: N.T.S.			
DWG. BY: AEM			
CHK. BY: WWH			
DRAWING NO.: FL-3294			
SHEET 6 OF 11			

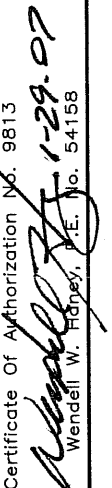


1 VERTICAL CROSS SECTION
 7 @ HEAD
 SEE DOOR PANEL DETAILS FOR
 OPTIONAL PANEL TYPES

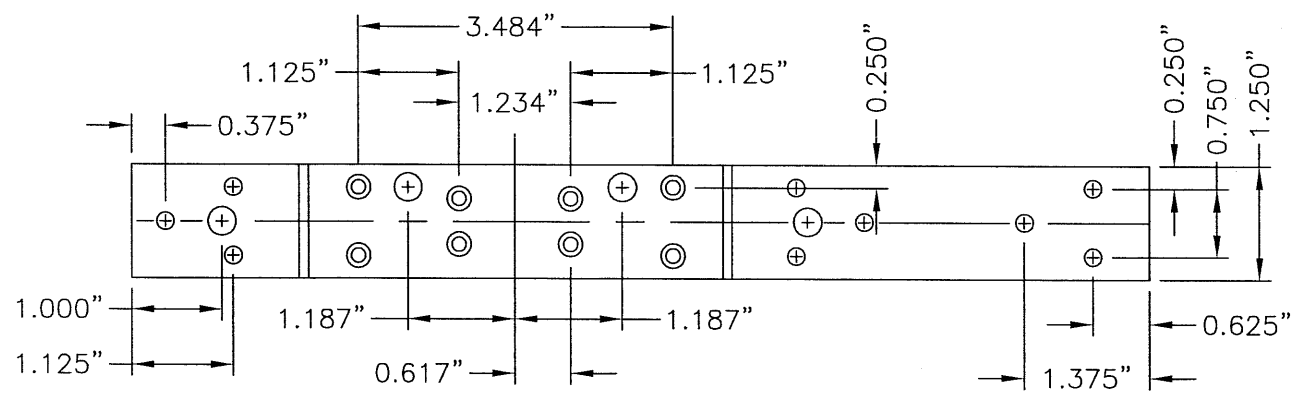


2 VERTICAL CROSS SECTION
 7 @ THRESHOLD
 SEE DOOR PANEL DETAILS FOR
 OPTIONAL PANEL TYPES

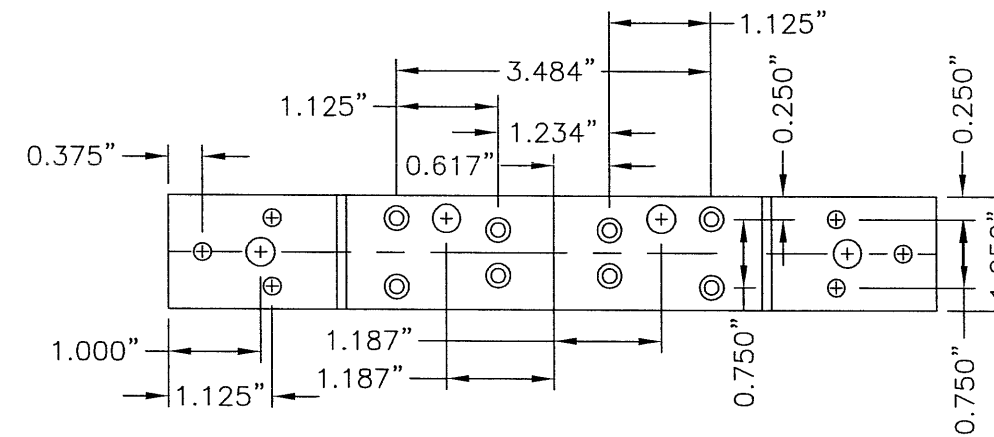
Documents Prepared By:		BUILDING CONSULTANTS, INC. P.O. Box 230 Valrico FL, 33595 Phone No.: 813.659.9197	
PRODUCT:		MESKER N & D PANELS "NON-IMPACT"	
PART OR ASSEMBLY:		VERTICAL CROSS SECTIONS	
DATE:		12/13/06	
SCALE:		N.T.S.	
DWG. BY:		AEM	
CHK. BY:		WWH	
DRAWING NO.:		FL-3294	
SHEET		7 OF 11	
NO. DATE		BY	
REVISIONS		BY	
NO.		DATE	
BY		DATE	



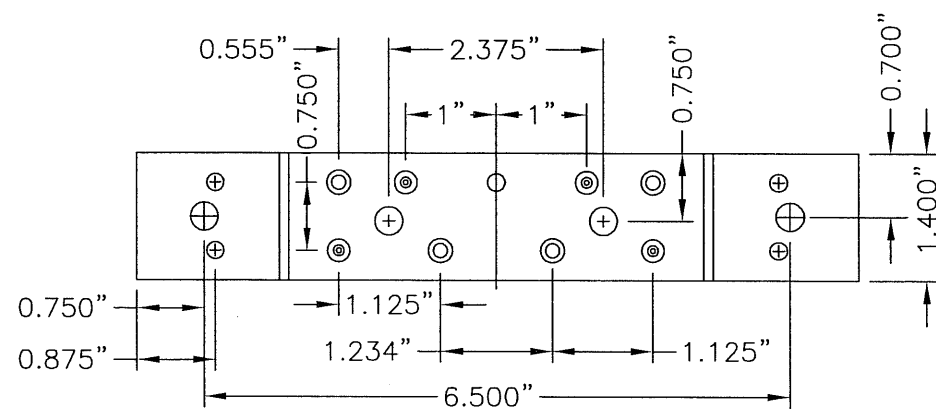
 Wendell W. Hinesy, P.E. No. 54158
 Florida Board of Professional Engineers
 Certificate Of Authorization No. 9813



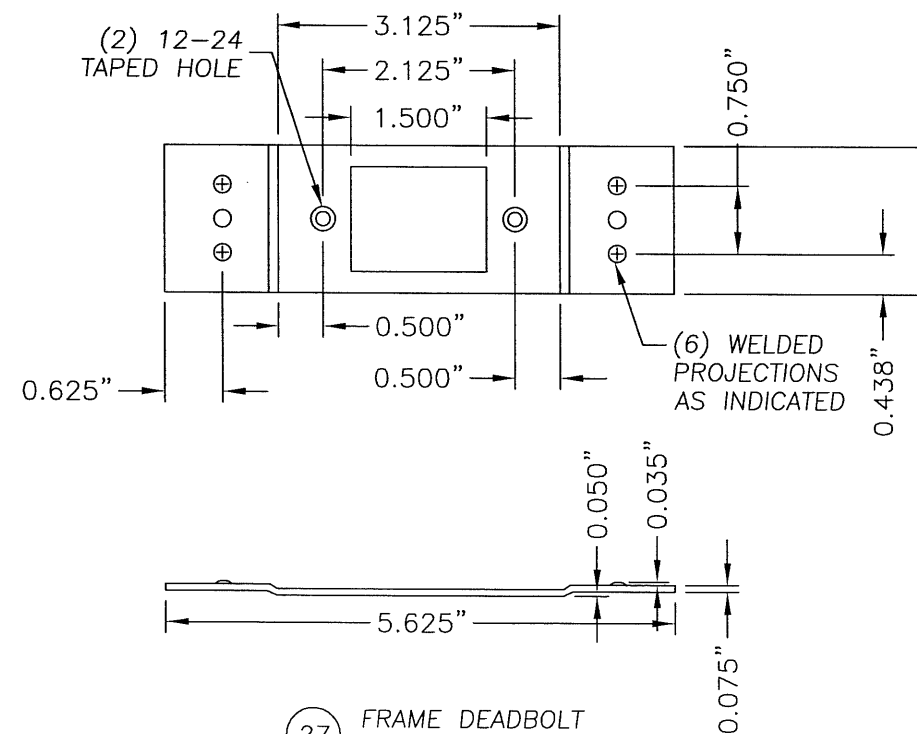
22 STANDARD (LONG) DOOR HINGE
TOP HINGE REINFORCEMENT



29 FRAME HINGE
REINFORCEMENT



28 STANDARD (SHORT) DOOR HINGE
MIDDLE & BOTTOM HINGE REINFORCEMENT



27 FRAME DEADBOLT
REINFORCEMENT

Documents Prepared By:

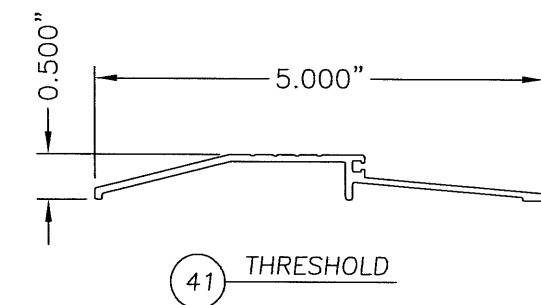
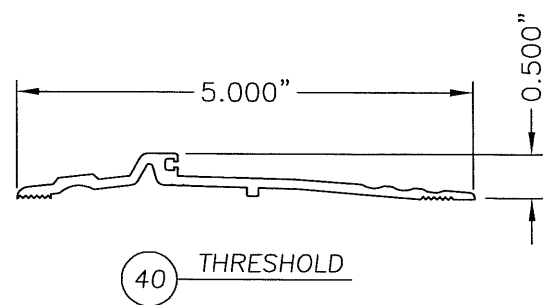
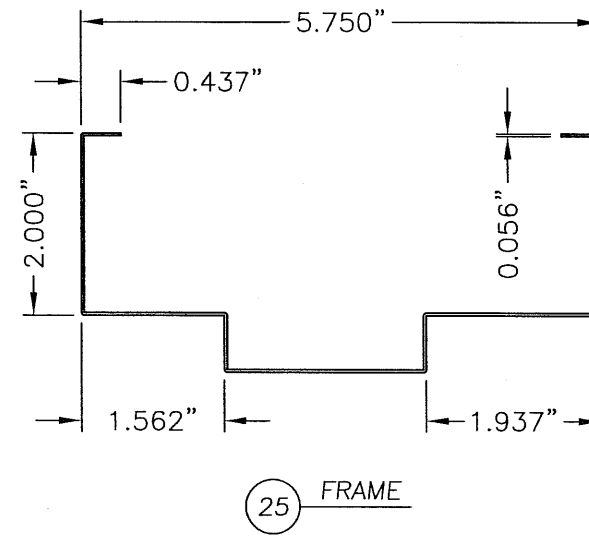
RW BUILDING CONSULTANTS, INC.
P.O. Box 230 Valrico FL, 33595
Phone No.: 813.659.9197
Florida Board of Professional Engineers
Certificate of Authorization No. 9813
Wendell W. Haney 1-29-07
Wendell W. Haney, P.E. No. 54158

PRODUCT:	MESKER N & D PANELS "NON-IMPACT"
PART OR ASSEMBLY:	COMPONENTS

NO.	DATE	BY

DATE:	12/13/06
SCALE:	N.T.S.
DWG. BY:	AEM
CHK. BY:	WWH
DRAWING NO.:	FL-3294
SHEET	10 OF 11

BILL OF MATERIALS		
ITEM	DESCRIPTION	MATERIAL
B	1/4" MAX. SHIM SPACE	WOOD
C	MASONRY	CONCRETE
D	DESIGN HARDWARE D25 DEADBOLT	STEEL
E	DESIGN HARDWARE X82 LOCKSET ASSEMBLY	STEEL
F	LATCH STRIKE PLATE	BRASS
G	DEADBOLT STRIKE PLATE	STEEL
K	SCHLAGE LOCKSET ASSEMBLY ND53PD	STEEL
P	#8 X 3/4" PFH SCREW	STEEL
Q	#12 X 1/2" MACHINE SCREW	STEEL
R	#12 X 3/4" PFH SELF TAPPING MACHINE SCREW	STEEL
T	1/4" X 2-1/4" TAPCON	STEEL
U	5/16" X 3-3/4" H.H. TAPCON	STEEL
V	MASONRY 'TEE' ANCHOR (MESKER PFMT5)	STEEL
W	TUBE ANCHOR	STEEL
X	5/16" X 5" TAPCON	STEEL
1	DOOR STILE EDGE REINFORCEMENT (D DOOR)	STEEL
2	DOOR SKIN (.055" THK. BODY & COVER) (D DOOR)	STEEL
3	FOAM (D DOOR) 1.0 PCF MIN. DENSITY	POLYSTYRENE
4	DOOR TOP & BOTTOM CLOSER (D DOOR)	STEEL
5	LOCK BOX REINFORCEMENT	STEEL
6	CLOSER REINFORCEMENT	STEEL
11	DOOR SKIN (.055" THK. BODY & COVER) (N DOOR)	STEEL
12	FOAM (N DOOR) 1.0 PCF MIN. DENSITY	POLYSTYRENE
13	DOOR TOP & BOTTOM CLOSER (N DOOR)	STEEL
21	HINGE	STEEL
22	STD. (LONG) DOOR HINGE REIN. (TOP HINGE MESKER PDNLHR 450)	STEEL
23	WEATHERSTRIP	FOAM
24	THRESHOLD WEATHERSTRIP (NATIONAL GUARD PRODUCTS, INC. ITEM #33)	VINYL
25	FRAME 5-3/4" MIN. WITH 2" HEAD	STEEL
27	14GA. (.075") C.R.S. 161 DEADBOLT FRAME REINFORCEMENT (PFDBR4)	STEEL
28	STD. (SHORT) DOOR HINGE REIN.(MIDDLE & BOTTOM)MESKER PDNHR450)	STEEL
29	STD. 4-1/2" FRAME HINGE REINFORCEMENT 7GA.(.175" MESKER PF4HR)	STEEL
40	OUTSWING THRESHOLD NATIONAL GUARD PRODUCTS, INC. #896	ALUMINUM
41	OUTSWING THRESHOLD NATIONAL GUARD PRODUCTS, INC. #950	ALUMINUM
51	FRAME REINFORCEMENT	STEEL



Documents Prepared By:
R.W. BUILDING CONSULTANTS, INC.
 P.O. Box 230 Valrico FL, 33595
 Phone No.: 813.659.9197
 Florida Board of Professional Engineers
 Certificate Of Authorization No. 9813
Wendell W. Hanley 1-29-07
 Wendell W. Hanley, P.E. No. 54158

PRODUCT: MESKER "NON-IMPACT"
 N & D PANELS
 PART OR ASSEMBLY: BILL OF MATERIALS & COMPONENTS

NO.	DATE	BY	REVISIONS

DATE: 12/13/06
 SCALE: N.T.S.
 DWG. BY: AEM
 CHK. BY: WWH
 DRAWING NO.: FL-3294
 SHEET 11 OF 11