

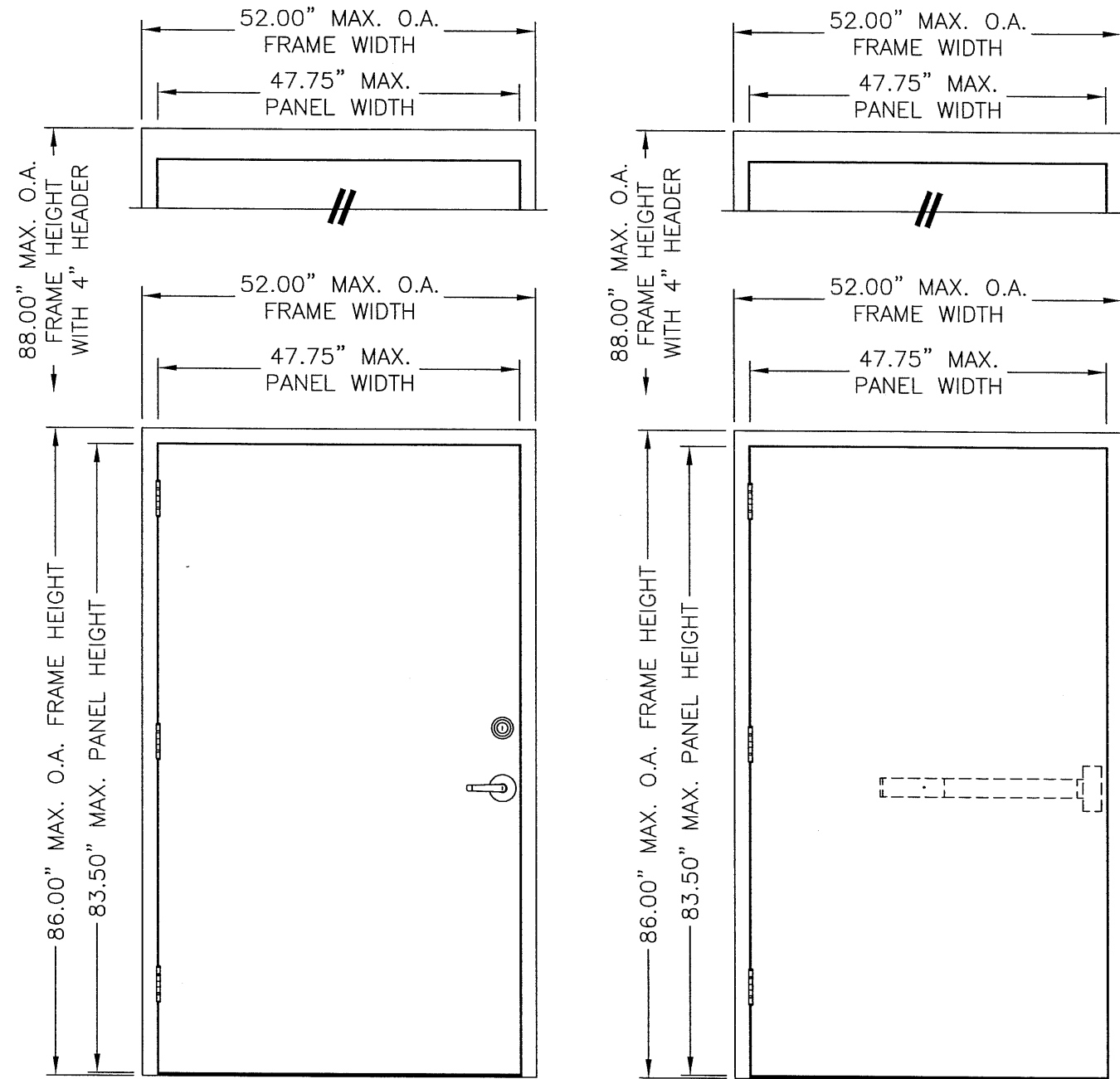
MESKER DOOR INC.

3440 STANWOOD BLVD.
HUNTSVILLE, AL. 35811
Phone: 256-851-6670

SINGLE OPAQUE DOOR "IMPACT" OUTSWING

GENERAL NOTES

1. THIS PRODUCT HAS BEEN EVALUATED AND IS IN COMPLIANCE WITH THE 2004 FLORIDA BUILDING CODE STRUCTURAL REQUIREMENTS EXCLUDING THE "HIGH VELOCITY HURRICANE ZONE".
2. PRODUCT ANCHORS SHALL BE AS LISTED AND SPACED AS SHOWN ON DETAILS. ANCHOR EMBEDMENT TO BASE MATERIAL SHALL BE BEYOND WALL DRESSING OR STUCCO.
3. WHEN USED IN AREAS OUTSIDE OF THE "HVHZ" REQUIRING WIND-BORNE DEBRIS PROTECTION THIS PRODUCT COMPLIES WITH SECTION 1609.1.4 OF THE FLORIDA BUILDING CODE AND DOES NOT REQUIRE AN IMPACT RESISTANT COVERING. THIS PRODUCT MEETS MISSILE LEVEL "D" AND INCLUDES WIND ZONE 4 AS DEFINED IN ASTM E1996.
4. CONDITIONS NOT COVERED BY THIS DRAWING ARE SUBJECT TO FURTHER ENGINEERING ANALYSIS.



N & D DOOR

N & D DOOR

TABLE OF CONTENTS	
SHEET #	DESCRIPTION
1	TYPICAL ELEVATIONS, DESIGN PRESSURES & GENERAL NOTES
2	DOOR PANEL DETAILS (D PANEL)
3	DOOR PANEL DETAILS (N PANEL)
4	HORIZONTAL CROSS SECTIONS
5	HORIZONTAL CROSS SECTIONS
6	HORIZONTAL CROSS SECTIONS
7	VERTICAL CROSS SECTIONS
8	ANCHORING LOCATIONS
9	ANCHORING DETAILS
10	COMPONENTS
11	BILL OF MATERIALS & COMPONENTS

DOOR TYPE	FRAME TYPE	OVERALL FRAME DIMENSION	SWING	LOCK TYPE	GLASS TYPE	DESIGN PRESSURE	
						POSITIVE	NEGATIVE
D	2" HEAD	52.00" X 86.00"	OUTSWING	DESIGN HARDWARE X82 LOCKSET & D25 DEADBOLT OR VONDUPRIN RIM PANIC HH99EO	G1	+55.0	-55.0
	4" HEAD	52.00" X 88.00"					
N	2" HEAD	52.00" X 86.00"	OUTSWING	DESIGN HARDWARE X82 LOCKSET & D25 DEADBOLT OR VONDUPRIN RIM PANIC HH99EO	G1	+55.0	-55.0
	4" HEAD	52.00" X 88.00"					

Documents Prepared By: **R.W.** BUILDING CONSULTANTS, INC.
P.O. Box 230 Valrico FL. 33595
Phone No.: 813.659.9197
Florida Board of Professional Engineers
Certificate Of Authorization No. 9813
Wendell W. Hapey, P.E. No. 54158
1-29-07

PRODUCT: MESKER "IMPACT"
N & D PANELS

PART OR ASSEMBLY: TYPICAL ELEVATIONS, DESIGN PRESSURES & GENERAL NOTES

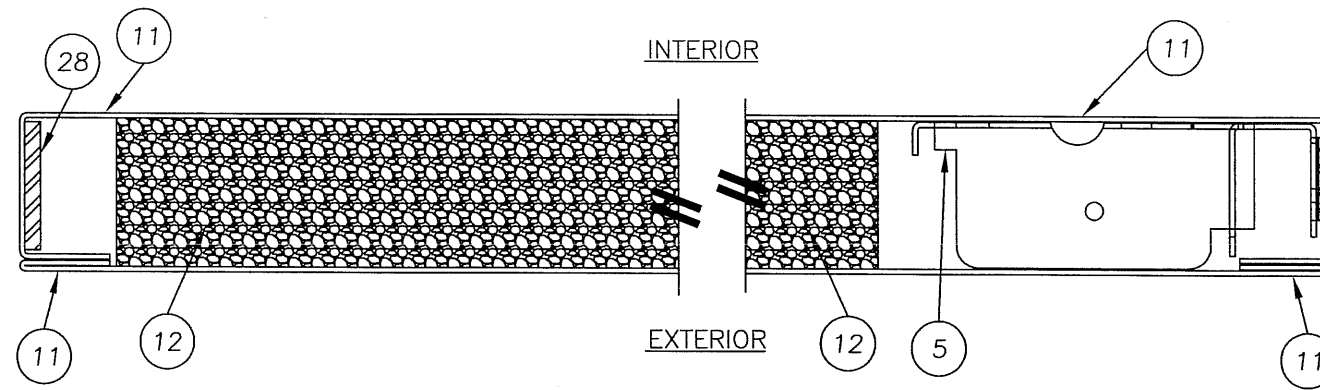
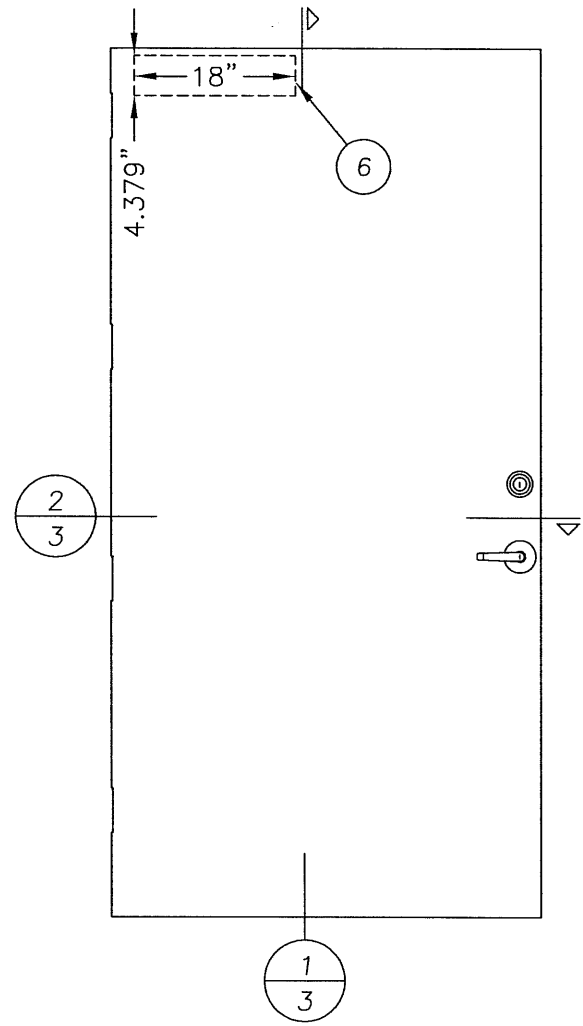
NO.	DATE	BY

REVISIONS

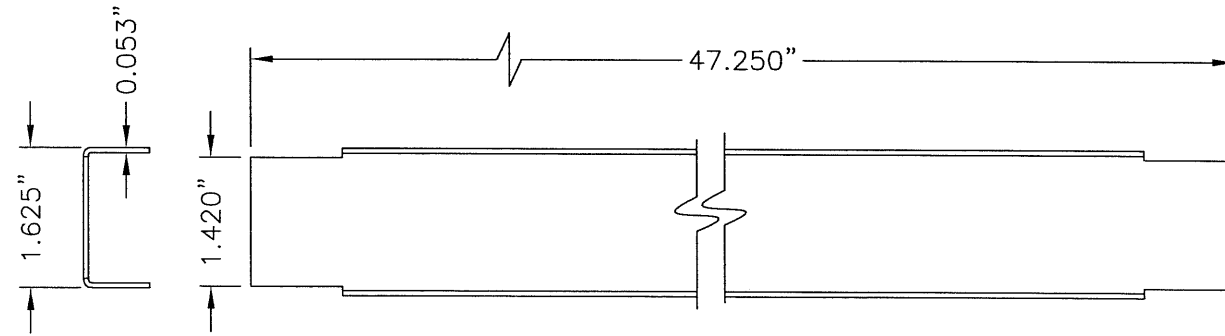
DATE: 12/13/06
SCALE: N.T.S.
DWG. BY: AEM
CHK. BY: WWH
DRAWING NO.: FL-3295
SHEET 1 OF 11

© 2006 R.W. BUILDING CONSULTANTS INC.

R:\A - Projects\Project Folders\Proj_1001-1100\pf1070\MESKER.dwg, FL3

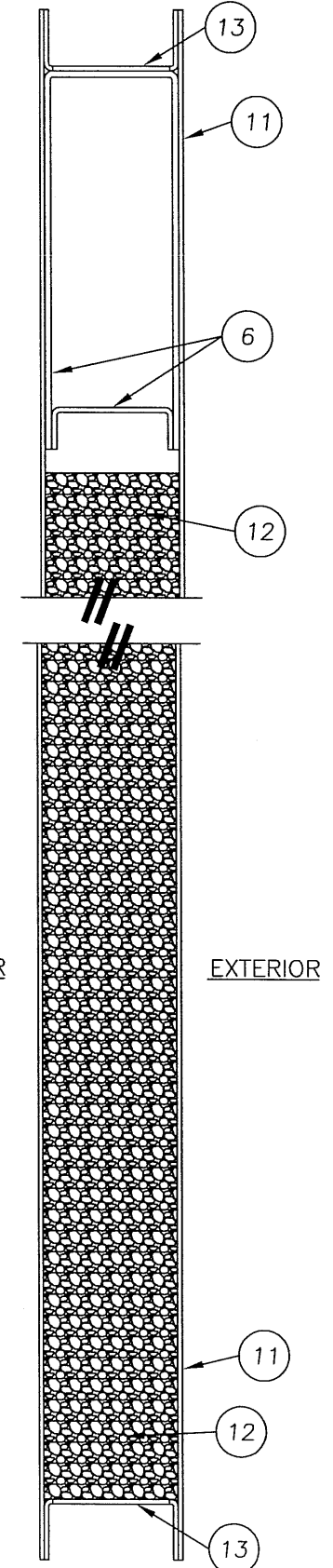


2
3 HORIZONTAL CROSS SECTION



13 DOOR TOP & BOTTOM CLOSER
16GA. (.053) C.R.S.

INTERIOR EXTERIOR



1
3 VERTICAL CROSS SECTION

DATE: 12/13/06
SCALE: N.T.S.
DWG. BY: AEM
CHK. BY: WWH
DRAWING NO.: FL-3295
SHEET 3 OF 11

PRODUCT: MESKER N & D PANELS "IMPACT"
PART OR ASSEMBLY: DOOR PANEL DETAILS (N PANEL)

Documents Prepared By:

RW BUILDING CONSULTANTS, INC.
P.O. Box 230 Valrico FL, 33595
Phone No.: 813.659.9197

Florida Board of Professional Engineers
Certificate Of Authorization No. 9813

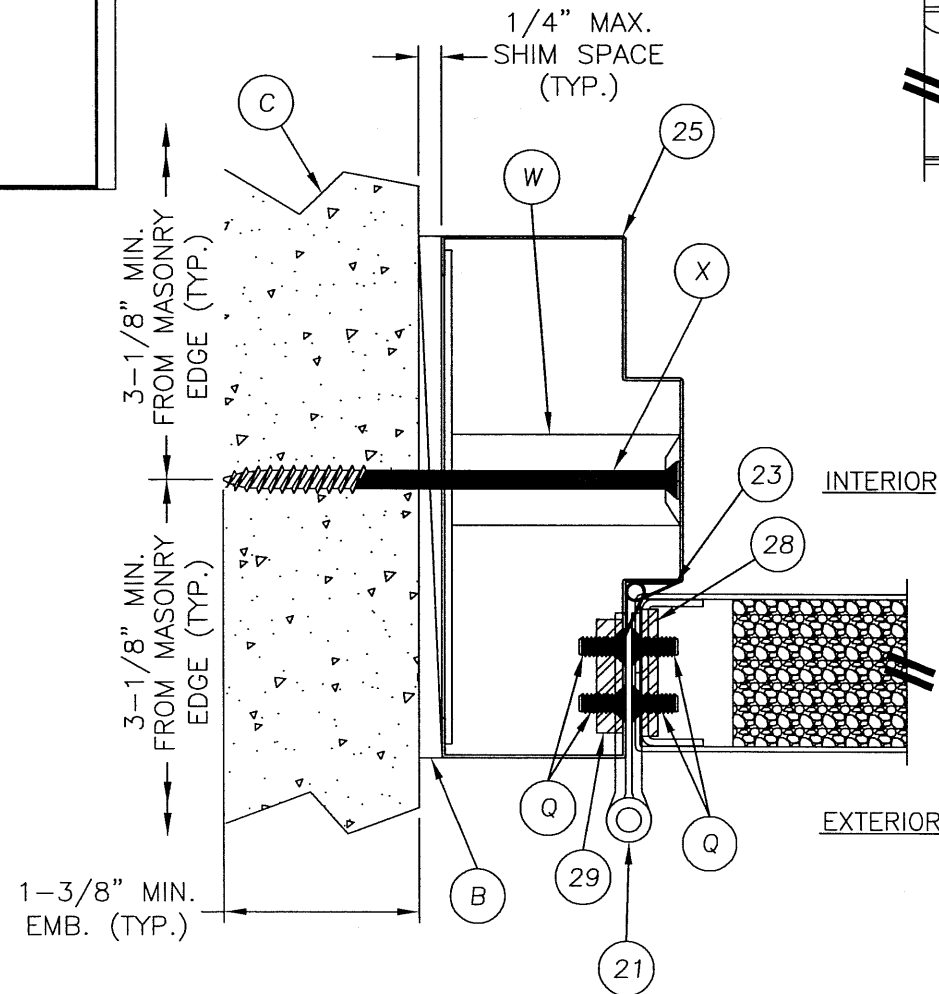
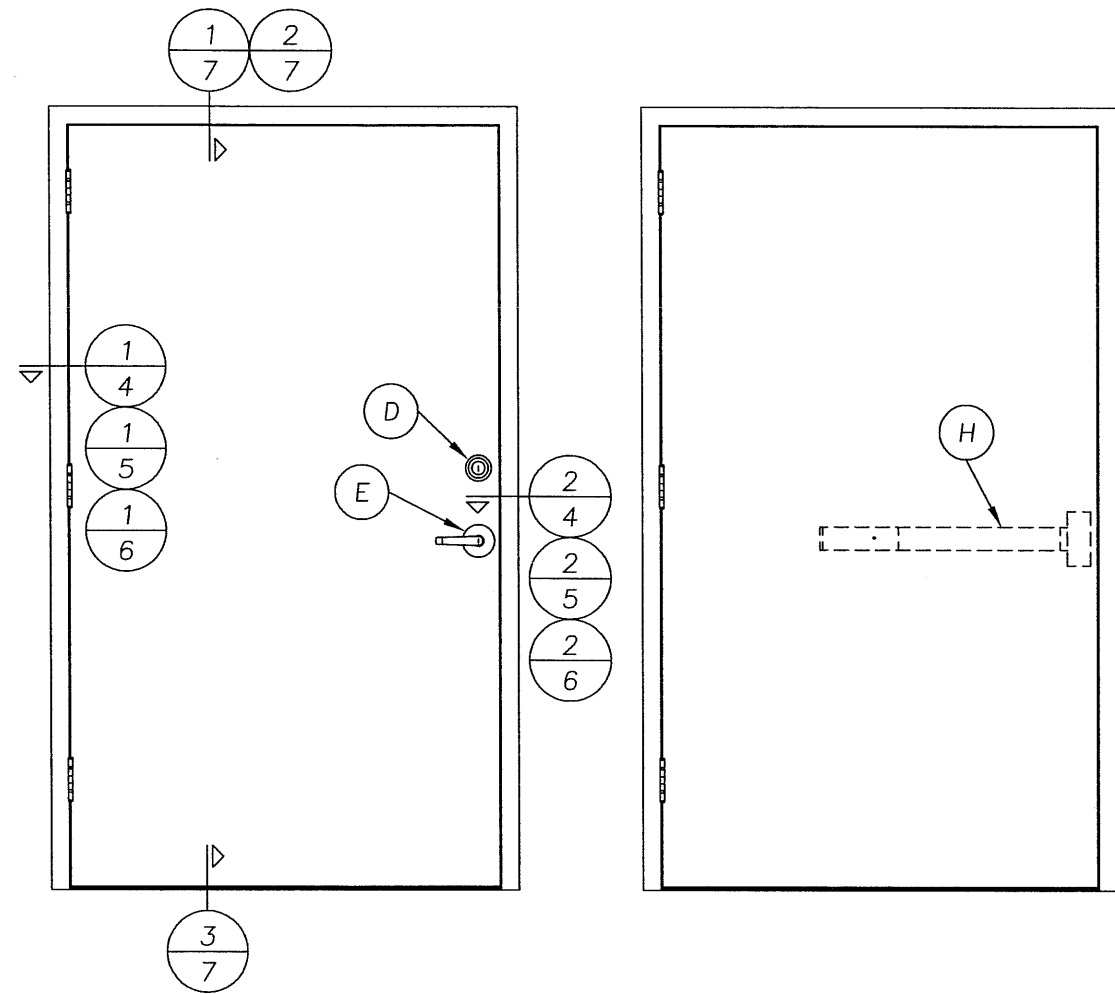
Wendell W. Hanley, P.E. No. 57158

REVISIONS

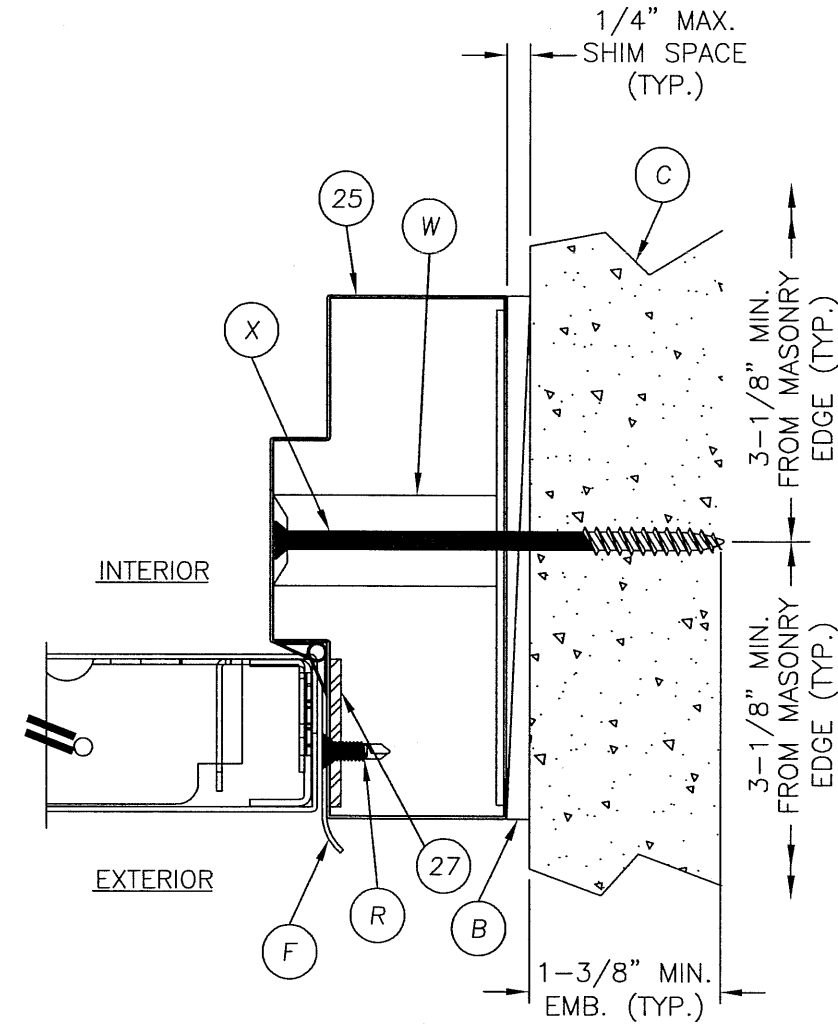
NO. DATE BY

© 2006 R.W. BUILDING CONSULTANTS INC.

R:\A - Projects\Project Folders\Proj 1001-1100\pr1070\MESKER.dwg, FL4



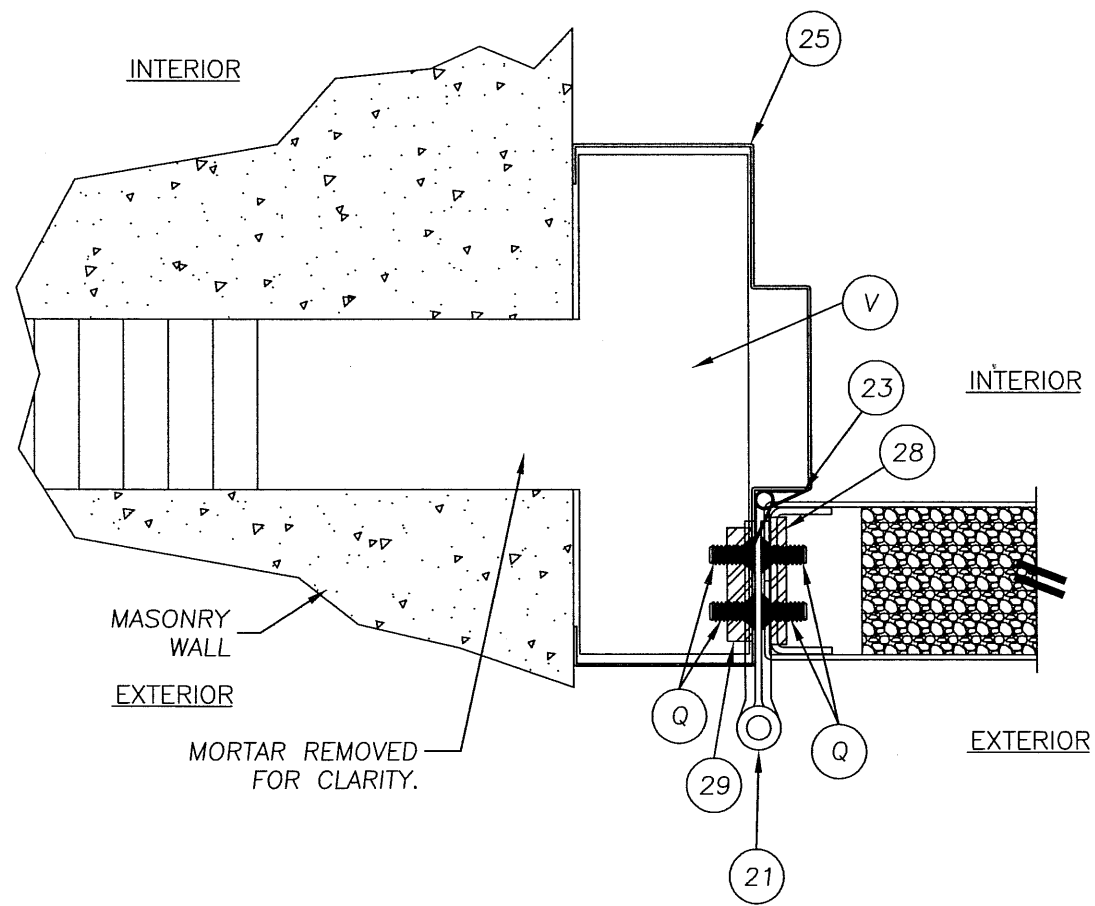
1 HORIZONTAL CROSS SECTION
 4 @ HINGE
 SHOWN WITH TUBE ANCHOR
 SEE DOOR PANEL DETAILS FOR
 OPTIONAL PANEL TYPES



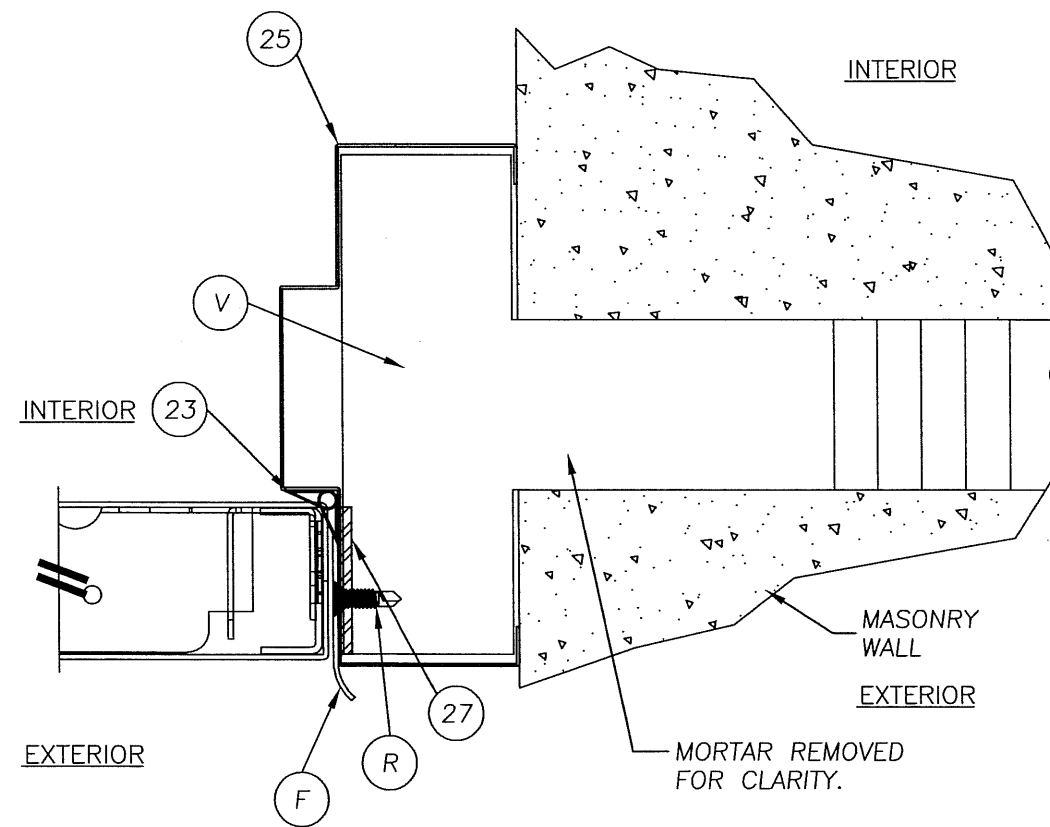
2 HORIZONTAL CROSS SECTION
 4 @ HINGE
 SHOWN WITH TUBE ANCHOR
 SEE DOOR PANEL DETAILS FOR
 OPTIONAL PANEL TYPES

Documents Prepared By:		R.W. BUILDING CONSULTANTS, INC. P.O. Box 230 Vairico FL. 33595 Phone No.: 813.659.9197	
PRODUCT:		MESKER "IMPACT" N & D PANELS	
PART OR ASSEMBLY:		HORIZONTAL CROSS SECTIONS	
NO.	DATE	BY	REVISIONS
DATE: 12/13/06			
SCALE: N.T.S.			
DWG. BY: AEM			
CHK. BY: WWH			
DRAWING NO.: FL-3295			
SHEET 4 OF 11			

© 2006 R.W. BUILDING CONSULTANTS INC.



1 HORIZONTAL CROSS SECTION
 5 @ LATCH
 SHOWN WITH TEE ANCHOR
 SEE DOOR PANEL DETAILS FOR
 OPTIONAL PANEL TYPES



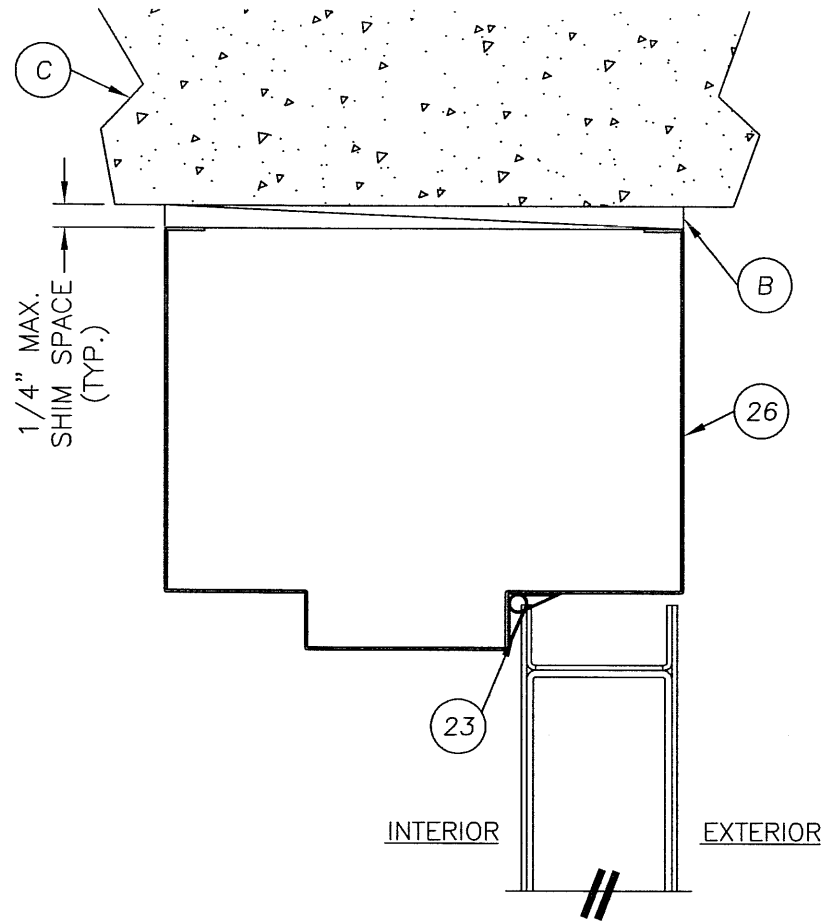
2 HORIZONTAL CROSS SECTION
 5 @ LATCH
 SHOWN WITH TEE ANCHOR
 SEE DOOR PANEL DETAILS FOR
 OPTIONAL PANEL TYPES

Documents Prepared By:
RW BUILDING CONSULTANTS, INC.
 P.O. Box 230 Valrico FL, 33595
 Phone No.: 813.659.9197
 Florida Board of Professional Engineers
 Certificate Of Authorization No. 9813
Wendell W. Haney 1-29-07
 Wendell W. Haney, P.E. No. 54158

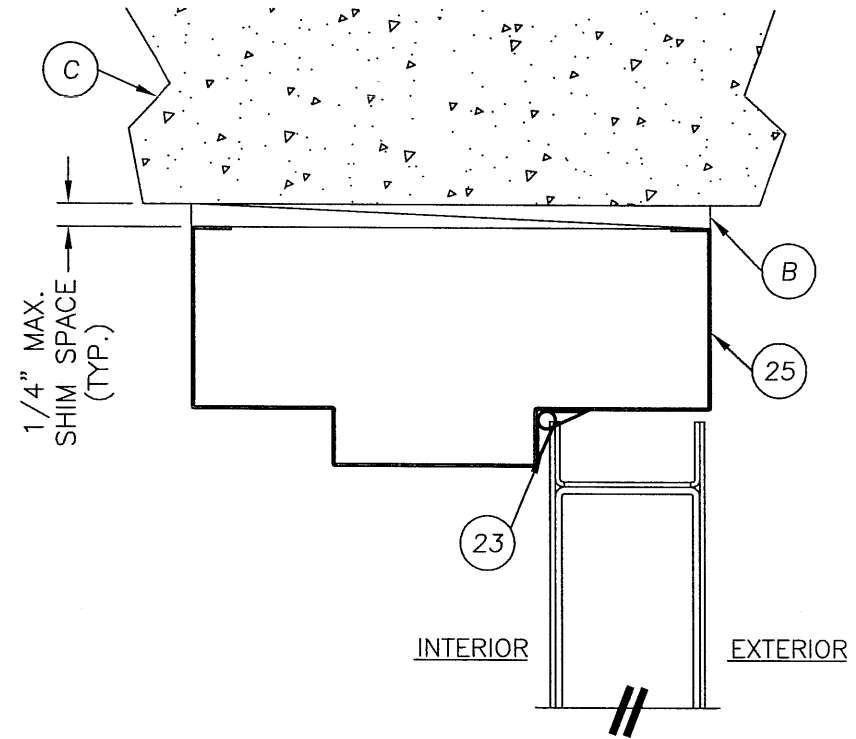
PRODUCT: MESKER "IMPACT"
 N & D PANELS
 PART OR ASSEMBLY: HORIZONTAL CROSS SECTIONS

NO.	DATE	BY	REVISIONS

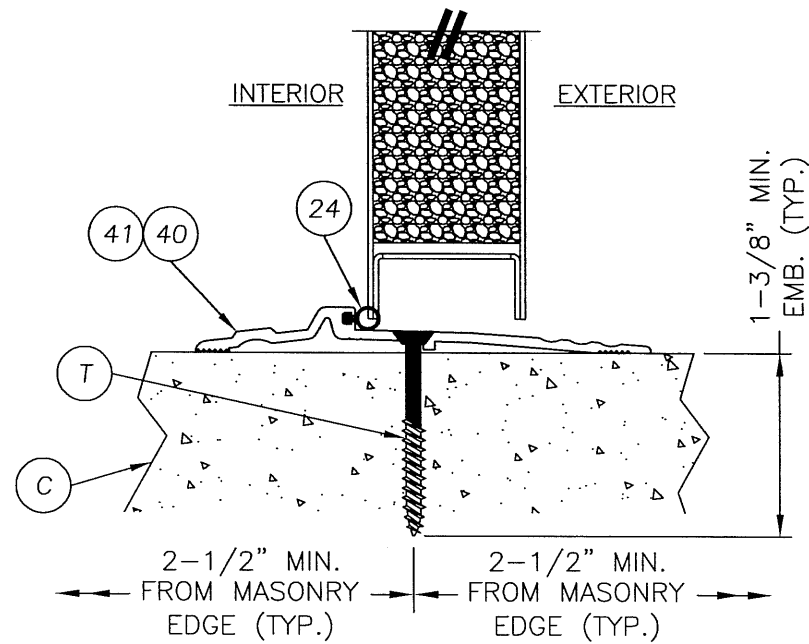
DATE: 12/13/06
 SCALE: N.T.S.
 DWG. BY: AEM
 CHK. BY: WWH
 DRAWING NO.: FL-3295
 SHEET 5 OF 11



1 VERTICAL CROSS SECTION
7 @ HEAD
SEE DOOR PANEL DETAILS FOR
OPTIONAL PANEL TYPES



2 VERTICAL CROSS SECTION
7 @ HEAD
SEE DOOR PANEL DETAILS FOR
OPTIONAL PANEL TYPES



3 VERTICAL CROSS SECTION
7 @ THRESHOLD
SEE DOOR PANEL DETAILS FOR
OPTIONAL PANEL TYPES

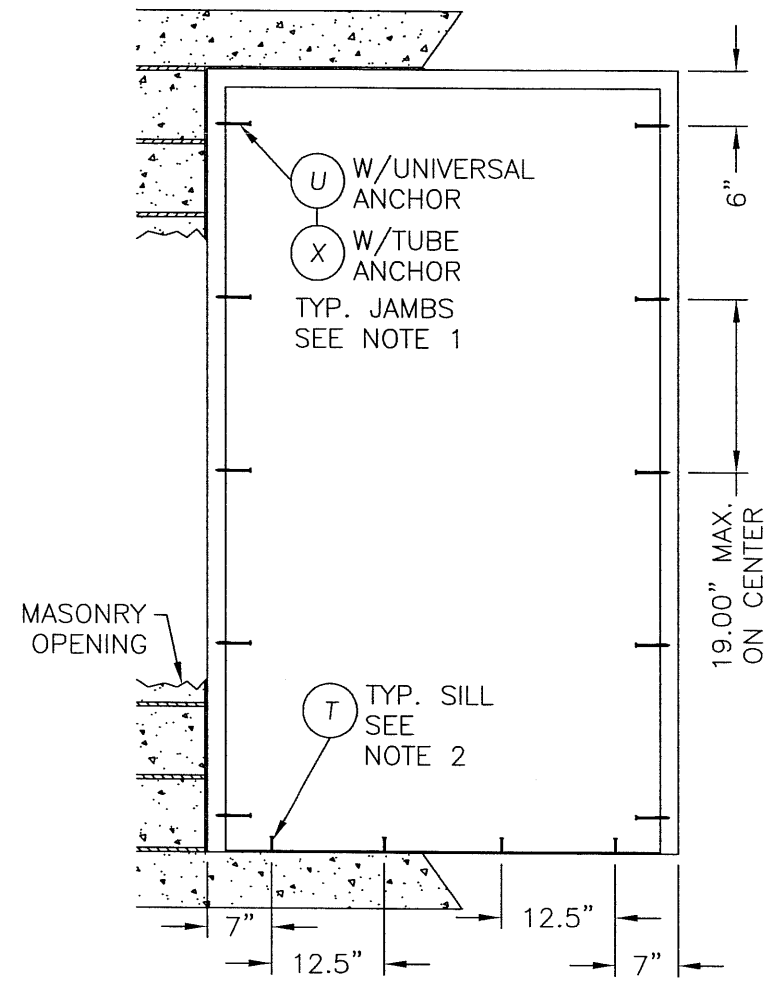
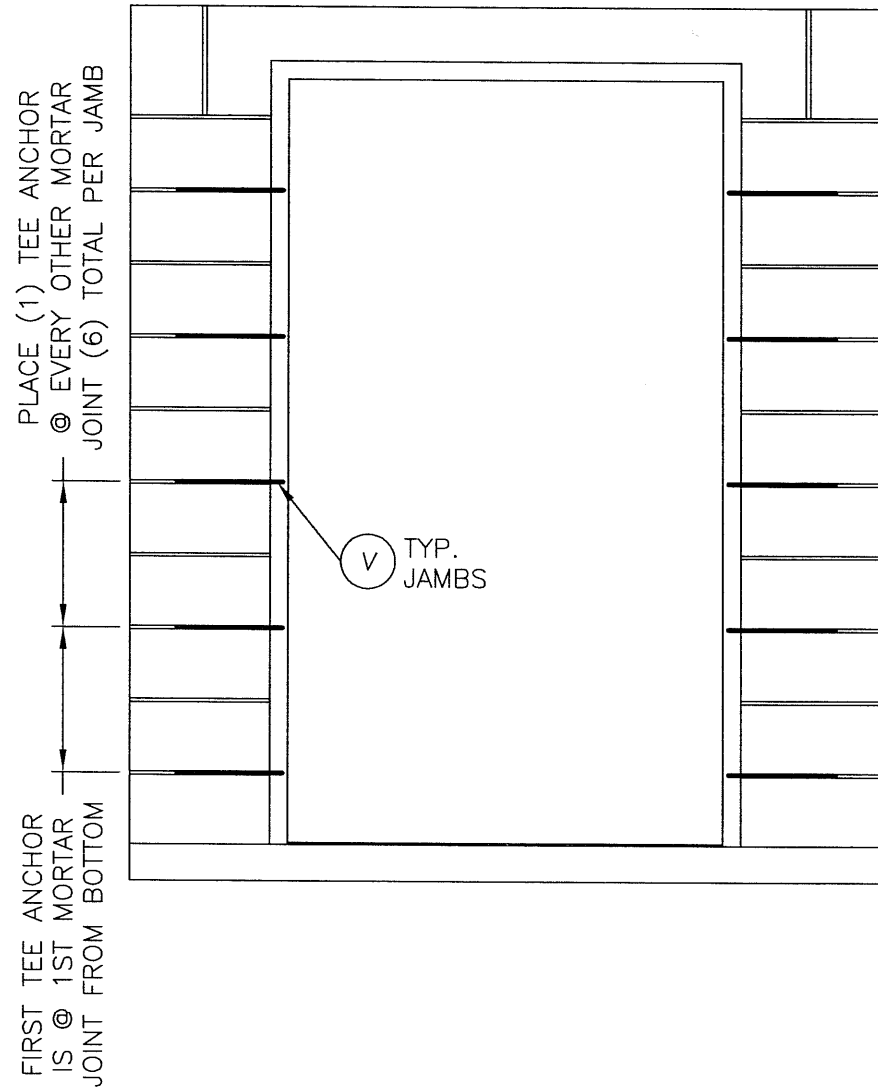
Documents Prepared By:

RW BUILDING CONSULTANTS, INC.
P.O. Box 230 Vairico FL, 33595
Phone No.: 813.659.9197
Florida Board of Professional Engineers
Certificate Of Authorization No. 9813
Wendell W. Haney 1-29-07
Wendell W. Haney, P.E. No. 54158

PRODUCT:	MESKER N & D PANELS "IMPACT"
PART OR ASSEMBLY:	VERTICAL CROSS SECTIONS

NO.	DATE	BY	REVISIONS

DATE:	12/13/06
SCALE:	N.T.S.
DWG. BY:	AEM
CHK. BY:	WWH
DRAWING NO.:	FL-3295
SHEET	7 OF 11

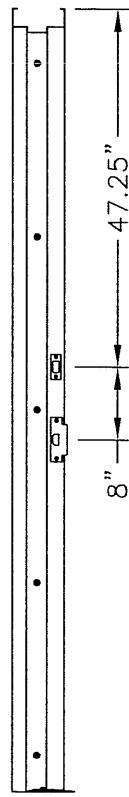


NOTES:

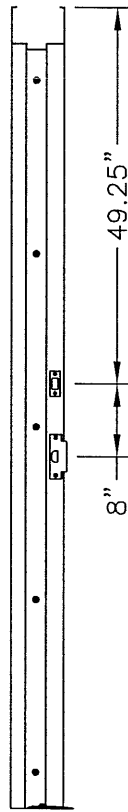
1. 5/16" TAPCONS REQUIRE A MINIMUM 3-1/8" CLEARANCE TO MASONRY EDGES AND A MINIMUM 3-3/4" CLEARANCE TO ADJACENT TAPCONS. UNLESS OTHERWISE NOTED BY CONCRETE SCREW MANUFACTURER.
2. 1/4" ITW CONCRETE SCREWS ANCHORING FRAME AND/OR SILL REQUIRE A MINIMUM 2-1/2" CLEARANCE TO MASONRY EDGES AND A MINIMUM 3" CLEARANCE TO ADJACENT CONCRETE SCREWS UNLESS OTHERWISE NOTED BY CONCRETE SCREW MANUFACTURER.

Documents Prepared By: **RW BUILDING CONSULTANTS, INC.**
P.O. Box 230 Vairico FL 33595
Phone No.: 813.659.9197
Florida Board of Professional Engineers
Certificate of Authorization No. 9813
Wendell W. Haney 12-29-07
Wendell W. Haney, P.E. No. 54158

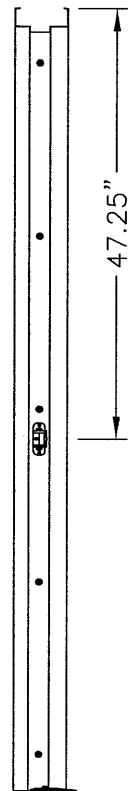
PRODUCT:	MESKER N & D PANELS "IMPACT"	
PART OR ASSEMBLY:	ANCHORING LOCATIONS	
NO.	DATE	BY
REVISIONS		
DATE: 12/13/06		
SCALE: N.T.S.		
DWG. BY: AEM		
CHK. BY: WWH		
DRAWING NO.: FL-3295		
SHEET 8 OF 11		



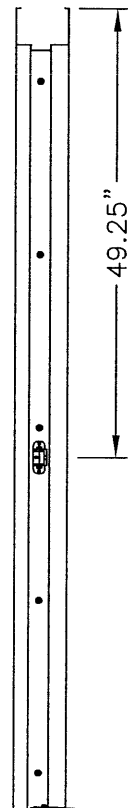
STRIKE PLATE
LOCATIONS 2" HEAD



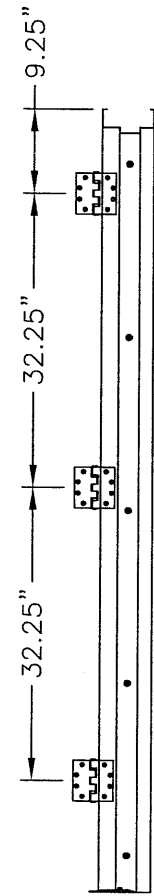
STRIKE PLATE
LOCATIONS 4" HEAD



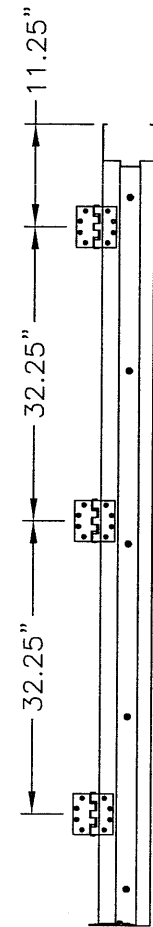
STRIKE PLATE
LOCATION 2" HEAD



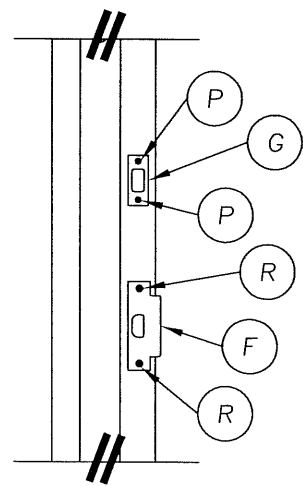
STRIKE PLATE
LOCATION 4" HEAD



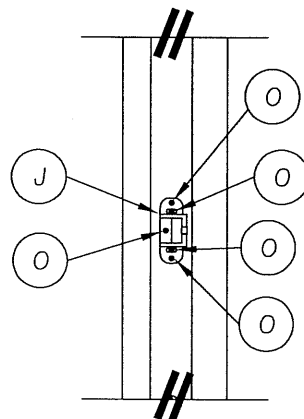
HINGE LOCATIONS
2" HEAD



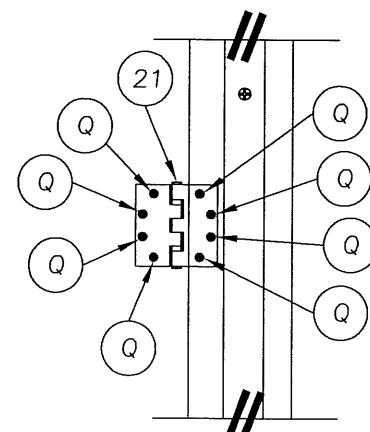
HINGE LOCATIONS
4" HEAD



STRIKE PLATE DETAIL
ANSI STRIKE & DEADBOLT



RIM STRIKE DETAIL



HINGE DETAIL

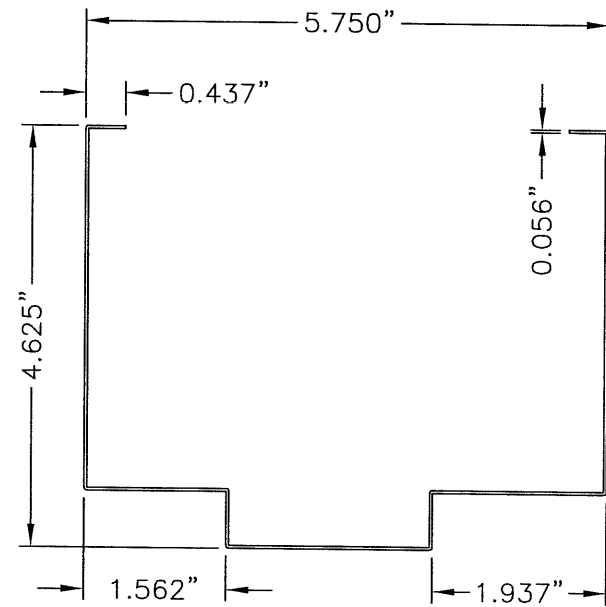
Documents Prepared By:
RW BUILDING CONSULTANTS, INC.
 P.O. Box 230 Vairico FL 33595
 Phone No.: 813.659.9197
 Florida Board of Professional Engineers
 Certificate Of Authorization No. 9813
Wendell W. Haney 1-29-07
 Wendell W. Haney P.E. No. 54158

PRODUCT:
 MESKER
 N & D PANELS "IMPACT"
 PART OR ASSEMBLY:
 ANCHORING DETAILS

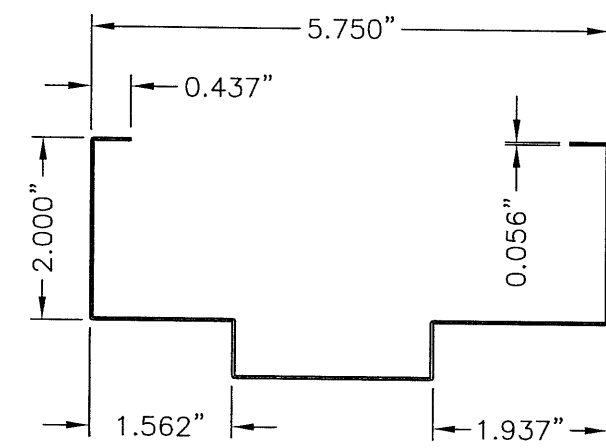
NO.	DATE	BY	REVISIONS

DATE: 12/13/06
 SCALE: N.T.S.
 DWG. BY: AEM
 CHK. BY: WWH
 DRAWING NO.:
 FL-3295
 SHEET 9 of 11

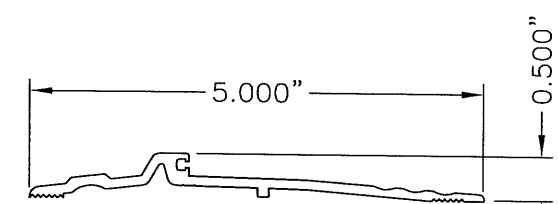
BILL OF MATERIALS		
ITEM	DESCRIPTION	MATERIAL
B	1/4" MAX. SHIM SPACE	WOOD
C	MASONRY	CONCRETE
D	DESIGN HARDWARE D25 DEADBOLT	STEEL
E	DESIGN HARDWARE X82 LOCKSET ASSEMBLY	STEEL
F	LATCH STRIKE PLATE	BRASS
G	DEADBOLT STRIKE PLATE	STEEL
H	VON DUPRIN 99 SERIES PANIC HARDWARE	STEEL
J	RIM PANIC STRIKE PLATE	STEEL
O	#12 X 1" H.H. SELF TAPPING SCREW	STEEL
P	#8 X 3/4" PFH SCREW	STEEL
Q	#12 X 1/2" MACHINE SCREW	STEEL
R	#12 X 3/4" PFH SELF TAPPING MACHINE SCREW	STEEL
T	1/4" X 2-1/4" TAPCON	STEEL
U	5/16" X 3-3/4" H.H. TAPCON	STEEL
V	MASONRY 'TEE' ANCHOR (MESKER PFMT5)	STEEL
W	TUBE ANCHOR	STEEL
X	5/16" X 5" TAPCON	STEEL
1	DOOR STILE EDGE REINFORCEMENT (D DOOR)	STEEL
2	DOOR SKIN (.055" THK. BODY & COVER) (D DOOR)	STEEL
3	FOAM (D DOOR) 1.0 PCF MIN. DENSITY	POLYSTYRENE
4	DOOR TOP & BOTTOM CLOSER (D DOOR)	STEEL
5	LOCK BOX REINFORCEMENT	STEEL
6	CLOSER REINFORCEMENT	STEEL
11	DOOR SKIN (.055" THK. BODY & COVER) (N DOOR)	STEEL
12	FOAM (N DOOR) 1.0 PCF MIN. DENSITY	POLYSTYRENE
13	DOOR TOP & BOTTOM CLOSER (N DOOR)	STEEL
21	HINGE	STEEL
22	STD. (LONG) DOOR HINGE REIN. (TOP HINGE MESKER PDNLHR 450)	STEEL
23	WEATHERSTRIP	FOAM
24	THRESHOLD WEATHERSTRIP (NATIONAL GUARD PRODUCTS, INC. ITEM #33)	VINYL
25	FRAME 5-3/4" MIN. WITH 2" HEAD	STEEL
26	FRAME 5-3/4" MIN. WITH 4" HEAD	STEEL
27	14GA. (.075") C.R.S. 161 DEADBOLT FRAME REINFORCEMENT (PFDBR4)	STEEL
28	STD. (SHORT) DOOR HINGE REIN.(MIDDLE & BOTTOM)MESKER PDNHR450)	STEEL
29	STD. 4-1/2" FRAME HINGE REINFORCEMENT 7GA.(.175" MESKER PF4HR)	STEEL
40	OUTSWING THRESHOLD NATIONAL GUARD PRODUCTS, INC. #896	ALUMINUM
41	OUTSWING THRESHOLD NATIONAL GUARD PRODUCTS, INC. #950	ALUMINUM
51	FRAME REINFORCEMENT	STEEL



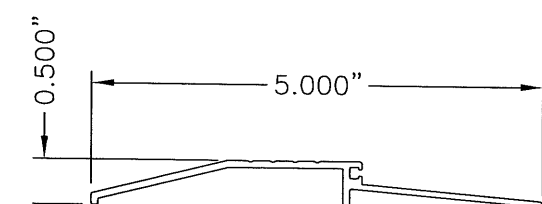
26 FRAME



25 FRAME



40 THRESHOLD



41 THRESHOLD

Documents Prepared By: **RW BUILDING CONSULTANTS, INC.**
P.O. Box 230 Valrico FL 33595
Phone No.: 813.659.9197
Florida Board of Professional Engineers
Certificate Of Authorization No. 9813
Wendell W. Heney, P.E. No. 54158

PRODUCT: MESKER "IMPACT" N & D PANELS
PART OR ASSEMBLY: BILL OF MATERIALS & COMPONENTS

NO.	DATE	BY	REVISIONS

DATE: 12/13/06
SCALE: N.T.S.
DWG. BY: AEM
CHK. BY: WWH
DRAWING NO.: FL-3295
SHEET 11 OF 11

© 2006 R.W. BUILDING CONSULTANTS INC.

K:\A - Projects\Project Folders\Proj 1001-1100\pt1070\MESKER.dwg, FL11