

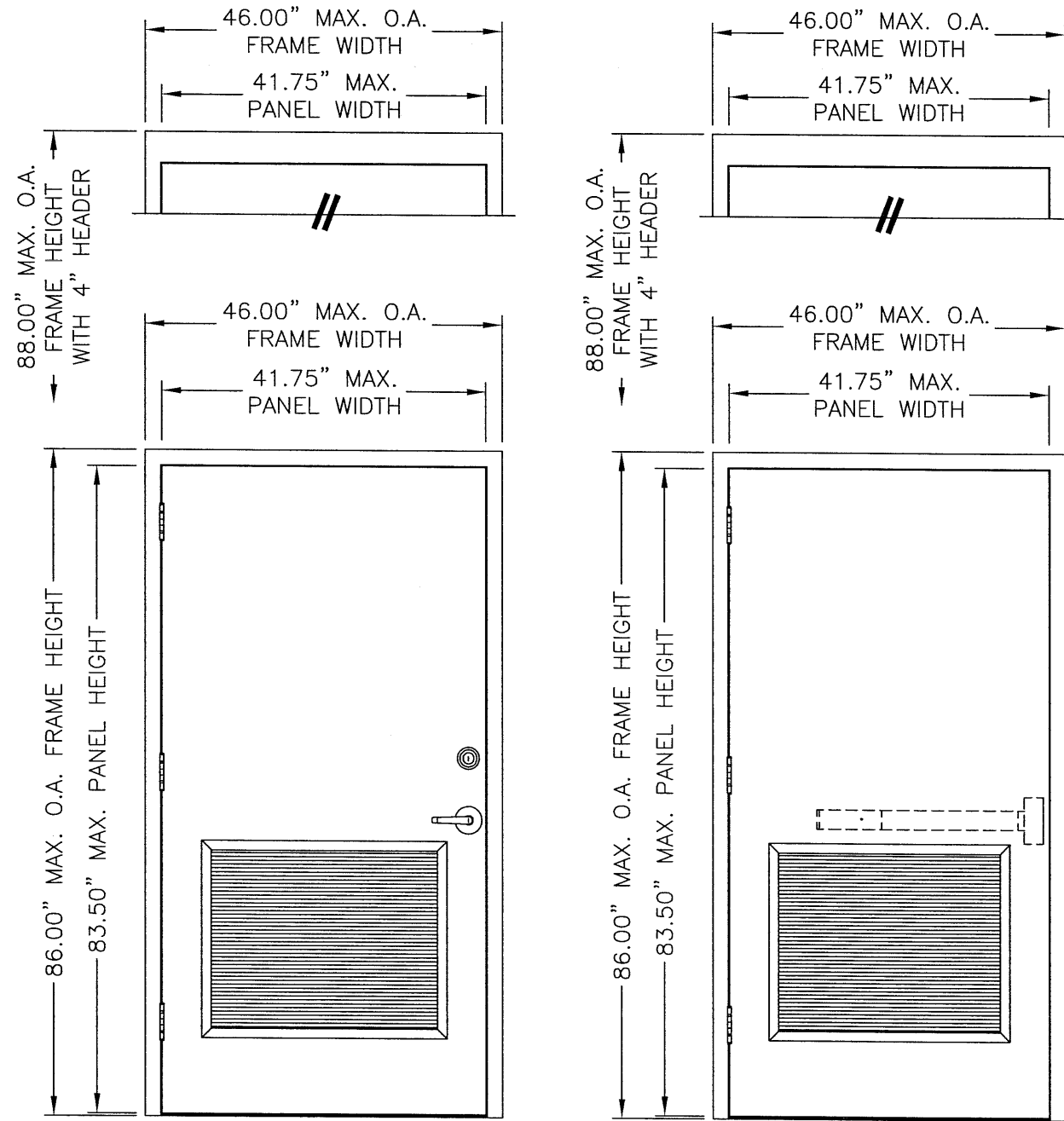
MESKER DOOR INC.

3440 STANWOOD BLVD.
HUNTSVILLE, AL. 35811
Phone: 256-851-6670

SINGLE OPAQUE DOOR 1/2 LOUVER "NON-IMPACT" OUTSWING

GENERAL NOTES

1. THIS PRODUCT HAS BEEN EVALUATED AND IS IN COMPLIANCE WITH THE 2004 FLORIDA BUILDING CODE STRUCTURAL REQUIREMENTS EXCLUDING THE "HIGH VELOCITY HURRICANE ZONE".
2. PRODUCT ANCHORS SHALL BE AS LISTED AND SPACED AS SHOWN ON DETAILS. ANCHOR EMBEDMENT TO BASE MATERIAL SHALL BE BEYOND WALL DRESSING OR STUCCO.
3. WHEN USED IN AREAS REQUIRING WIND-BORNE DEBRIS PROTECTION THIS PRODUCT IS REQUIRED TO BE PROTECTED WITH AN IMPACT RESISTANT COVERING THAT COMPLIES WITH SECTION 1609.1.4 OF THE FLORIDA BUILDING CODE.
4. CONDITIONS NOT COVERED BY THIS DRAWING ARE SUBJECT TO FURTHER ENGINEERING ANALYSIS.



N & D DOOR

N & D DOOR

TABLE OF CONTENTS	
SHEET #	DESCRIPTION
1	TYPICAL ELEVATIONS, DESIGN PRESSURES & GENERAL NOTES
2	DOOR PANEL DETAILS (D PANEL)
3	DOOR PANEL DETAILS (N PANEL)
4	HORIZONTAL CROSS SECTIONS
5	HORIZONTAL CROSS SECTIONS
6	HORIZONTAL CROSS SECTIONS
7	VERTICAL CROSS SECTIONS
8	ANCHORING LOCATIONS
9	ANCHORING DETAILS
10	COMPONENTS
11	BILL OF MATERIALS & COMPONENTS

DOOR TYPE	FRAME TYPE	OVERALL FRAME DIMENSION	SWING	LOCK TYPE	GLASS TYPE	DESIGN PRESSURE	
						POSITIVE	NEGATIVE
D	2" HEAD	46.00" X 86.00"	OUTSWING	DESIGN HARDWARE X82 LOCKSET & D25 DEADBOLT OR VONDUPRIN RIM PANIC HH99EO	G1	+40.0	-40.0
	4" HEAD	46.00" X 88.00"					
N	2" HEAD	46.00" X 86.00"	OUTSWING	DESIGN HARDWARE X82 LOCKSET & D25 DEADBOLT OR VONDUPRIN RIM PANIC HH99EO	G1	+40.0	-40.0
	4" HEAD	46.00" X 88.00"					

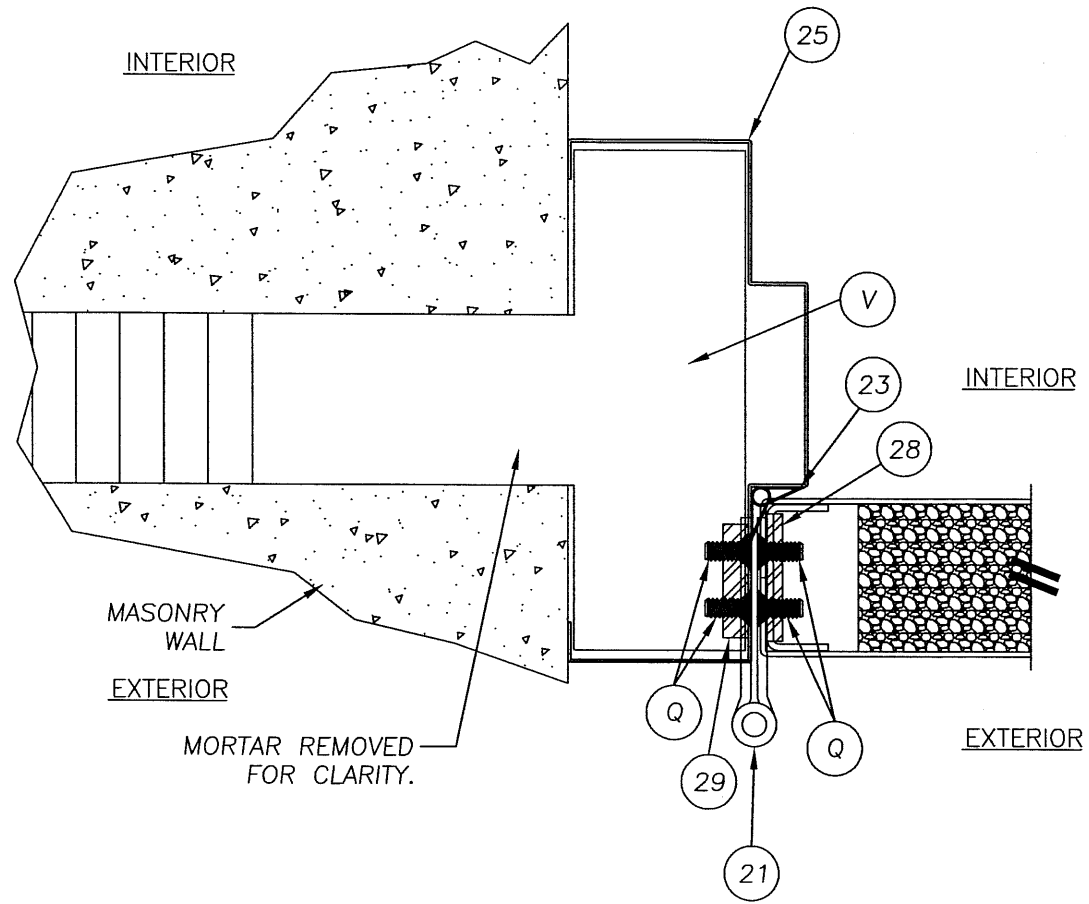
Documents Prepared By:
R.W. BUILDING CONSULTANTS, INC.
 P.O. Box 230 Vairico FL. 33595
 Phone No.: 813.659.9197
 Florida Board of Professional Engineers
 Certificate Of Authorization No. 9813
Wendell W. Honeys 1-26-07
 Wendell W. Honeys P.E. No. 54158

PRODUCT: MESKER
N & D PANELS "NON-IMPACT"
 PART OR ASSEMBLY:
TYPICAL ELEVATIONS, DESIGN PRESSURES & GENERAL NOTES

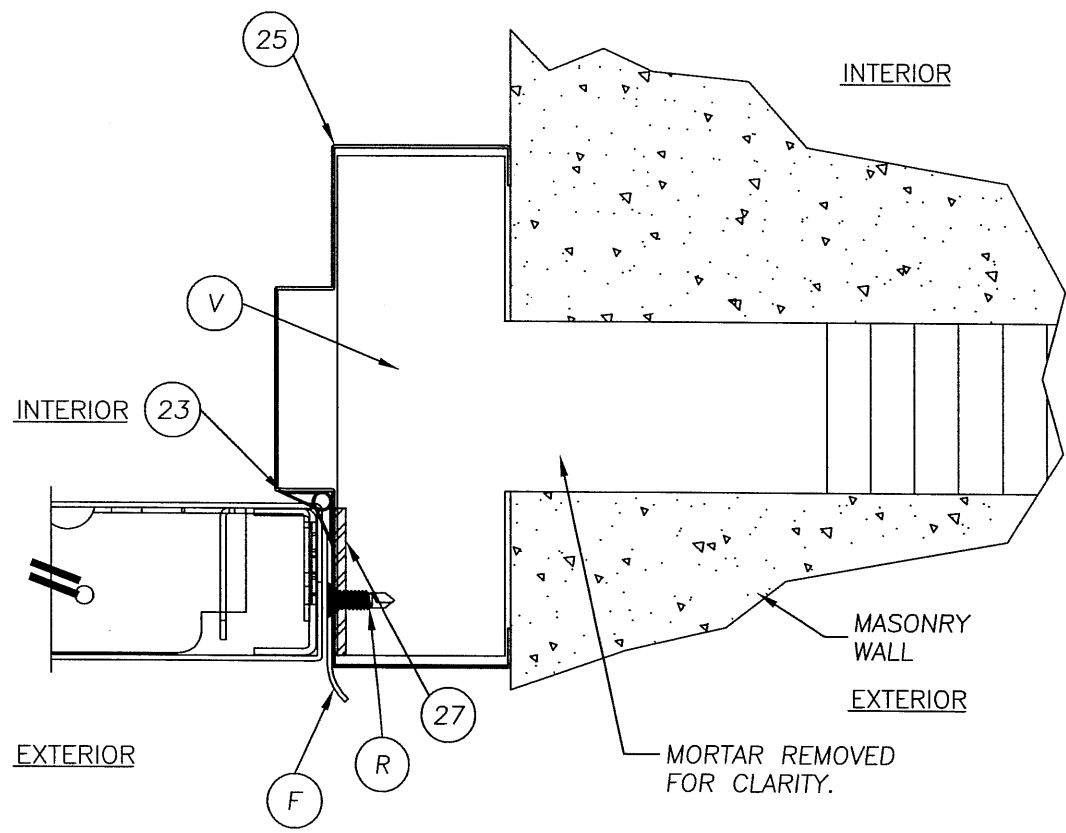
NO.	DATE	BY

DATE: 12/13/06
 SCALE: N.T.S.
 DWG. BY: AEM
 CHK. BY: WWH
 DRAWING NO.: FL-3298
 SHEET 1 OF 11

R:\A - Projects\Project Folders\Proj 1001-1100\pf1070\MESKER.dwg, 5



1 HORIZONTAL CROSS SECTION
 5 @ LATCH
 SHOWN WITH TEE ANCHOR
 SEE DOOR PANEL DETAILS FOR
 OPTIONAL PANEL TYPES



2 HORIZONTAL CROSS SECTION
 5 @ LATCH
 SHOWN WITH TEE ANCHOR
 SEE DOOR PANEL DETAILS FOR
 OPTIONAL PANEL TYPES

Documents Prepared By:
RW BUILDING CONSULTANTS, INC.
 P.O. Box 230 Vairico FL, 33595
 Phone No.: 813.659.9197
 Florida Board of Professional Engineers
 Certificate Of Authorization No. 9813
Wendell W. Hapsy 1-26-07
 Wendell W. Hapsy, P.E. No. 54158

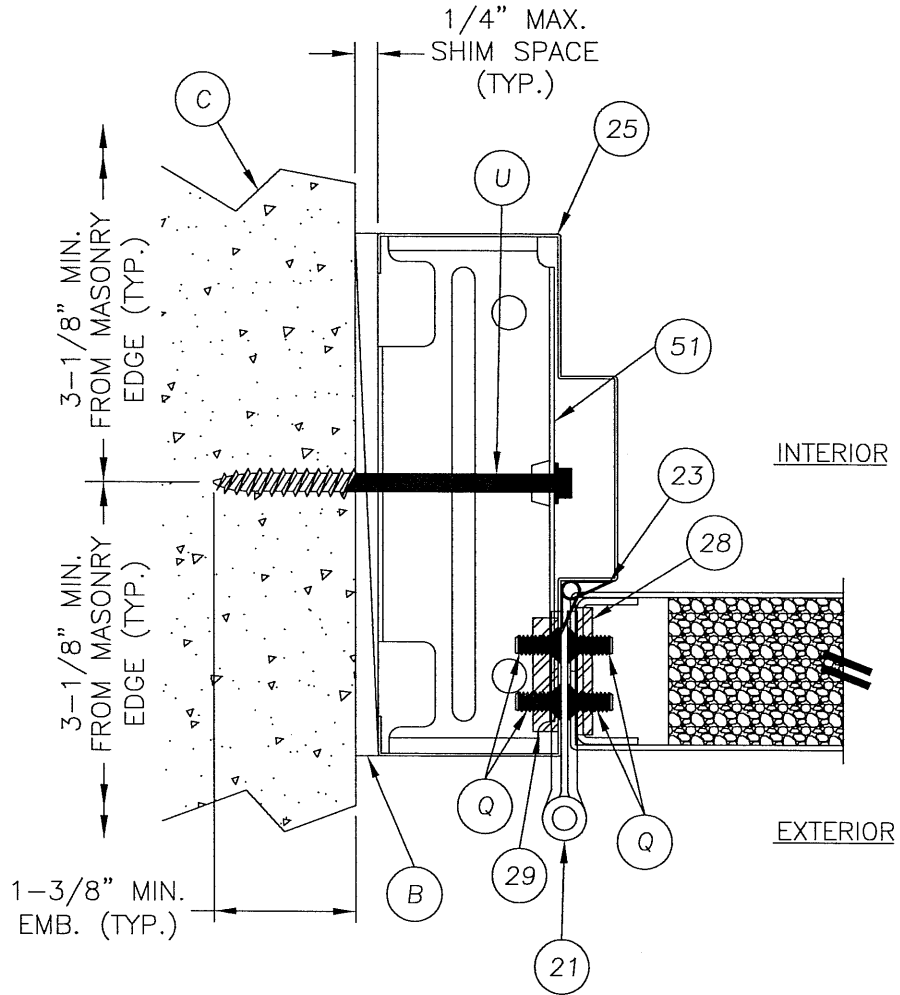
PRODUCT: MESKER
 N & D PANELS "NON-IMPACT"

PART OR ASSEMBLY: HORIZONTAL CROSS SECTIONS

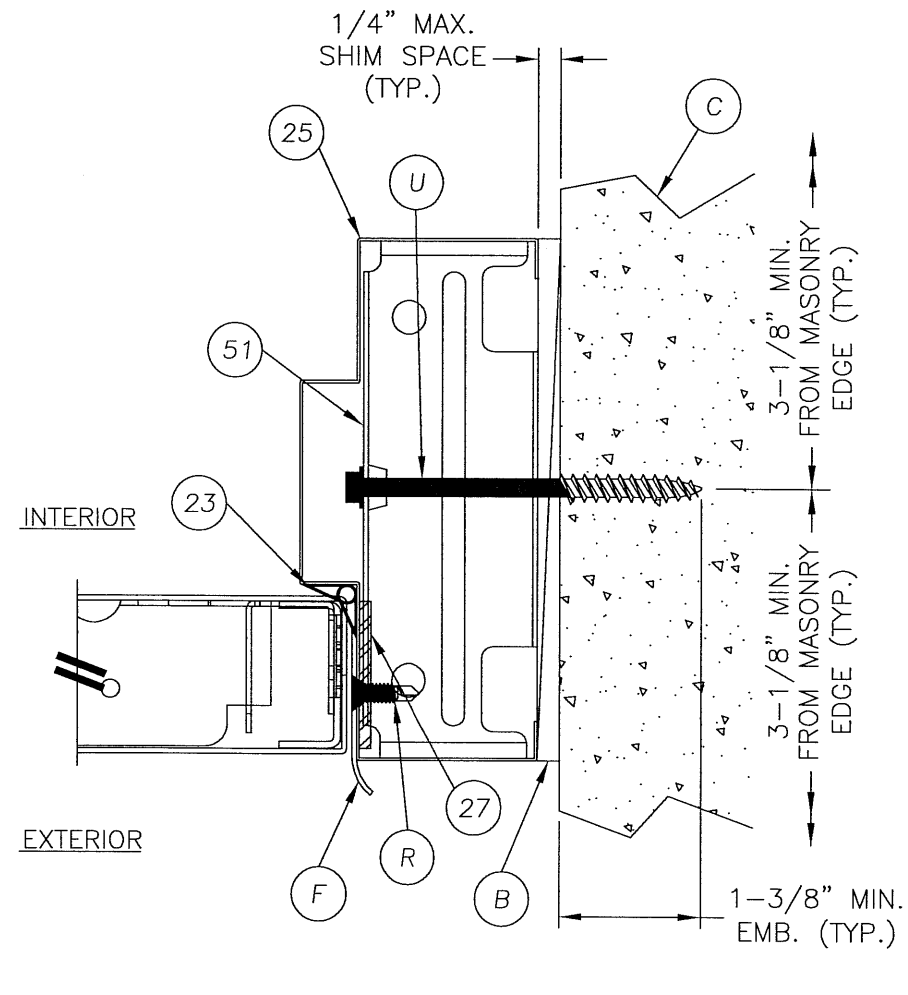
NO.	DATE	BY

DATE: 12/13/06
 SCALE: N.T.S.
 DWG. BY: AEM
 CHK. BY: WWH
 DRAWING NO.: FL-3298
 SHEET 5 OF 11

© 2006 R.W. BUILDING CONSULTANTS INC.

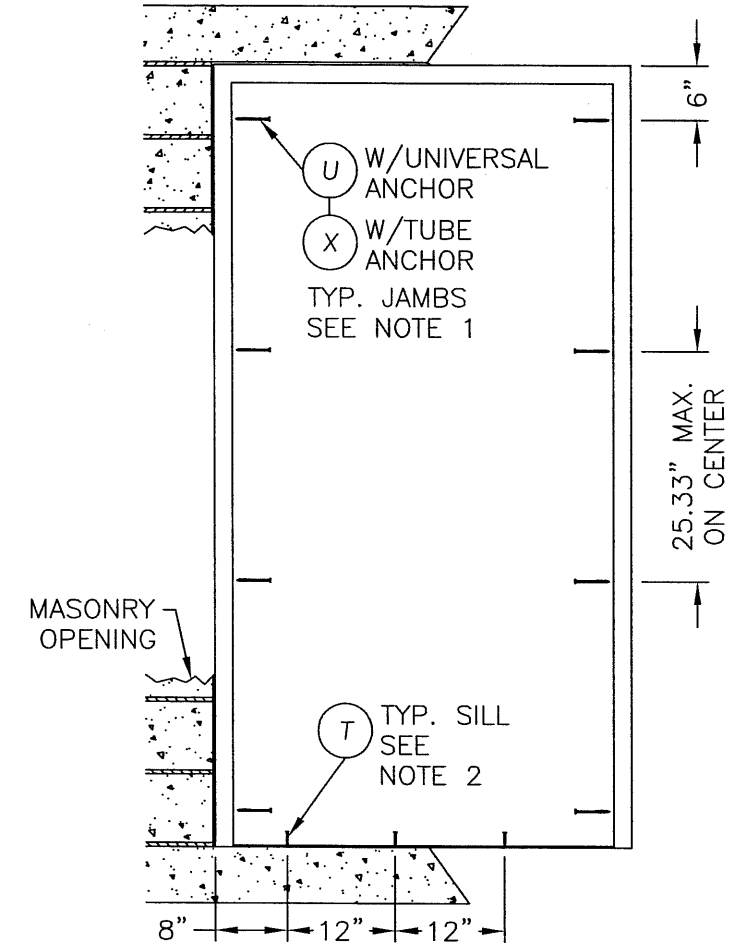
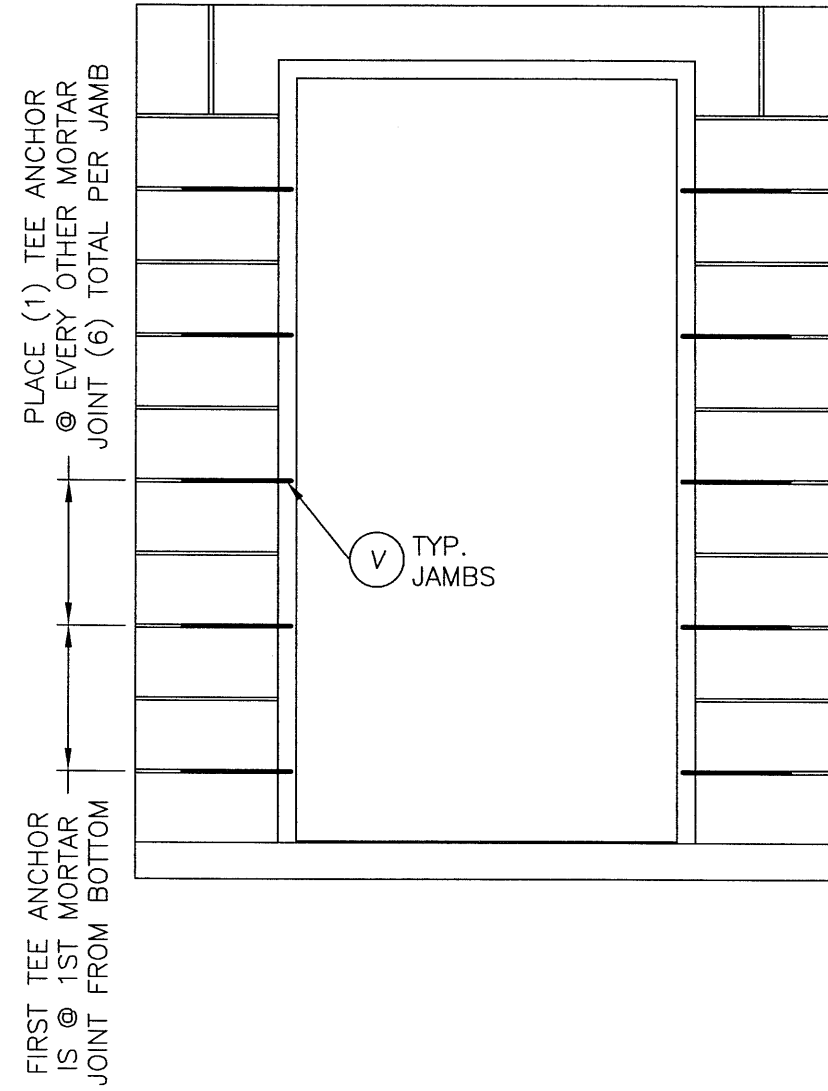


1 HORIZONTAL CROSS SECTION
 6 @ LATCH
 SHOWN WITH UNIVERSAL ANCHOR
 SEE DOOR PANEL DETAILS FOR
 OPTIONAL PANEL TYPES



2 HORIZONTAL CROSS SECTION
 6 @ LATCH
 SHOWN WITH UNIVERSAL ANCHOR
 SEE DOOR PANEL DETAILS FOR
 OPTIONAL PANEL TYPES

Documents Prepared By:		BUILDING CONSULTANTS, INC. P.O. Box 230 Valrico FL 33595 Phone No.: 813.659.9197 Florida Board of Professional Engineers Certificate Of Authorization No. 9813 <i>Wendell W. Henney</i> 1-26-07 Wendell W. Henney, P.E. No. 54158	
PRODUCT:	MESKER N & D PANELS "NON-IMPACT"	REVISIONS	
PART OR ASSEMBLY:	HORIZONTAL CROSS SECTIONS	NO.	DATE
		BY	
DATE: 12/13/06			
SCALE: N.T.S.			
DWG. BY: AEM			
CHK. BY: WWH			
DRAWING NO.: FL-3298			
SHEET 6 OF 11			



NOTES:

1. 5/16" TAPCONS REQUIRE A MINIMUM 3-1/8" CLEARANCE TO MASONRY EDGES AND A MINIMUM 3-3/4" CLEARANCE TO ADJACENT TAPCONS. UNLESS OTHERWISE NOTED BY CONCRETE SCREW MANUFACTURER.
2. 1/4" ITW CONCRETE SCREWS ANCHORING FRAME AND/OR SILL REQUIRE A MINIMUM 2-1/2" CLEARANCE TO MASONRY EDGES AND A MINIMUM 3" CLEARANCE TO ADJACENT CONCRETE SCREWS UNLESS OTHERWISE NOTED BY CONCRETE SCREW MANUFACTURER.

Documents Prepared By: **RW** BUILDING CONSULTANTS, INC.
P.O. Box 230 Vairico FL. 33595
Phone No.: 813.659.9197
Florida Board of Professional Engineers
Certificate Of Authorization No. 9813
Wendell W. Honey 126-07
Wendell W. Honey P.E. No. 54158

PRODUCT:	MESKER N & D PANELS "NON-IMPACT"	
PART OR ASSEMBLY:	ANCHORING LOCATIONS	
NO.	DATE	BY
REVISIONS		
DATE: 12/13/06		
SCALE: N.T.S.		
DWG. BY: AEM		
CHK. BY: WWH		
DRAWING NO.: FL-3298		
SHEET 8 of 11		

