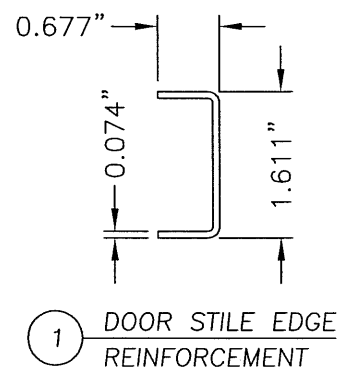
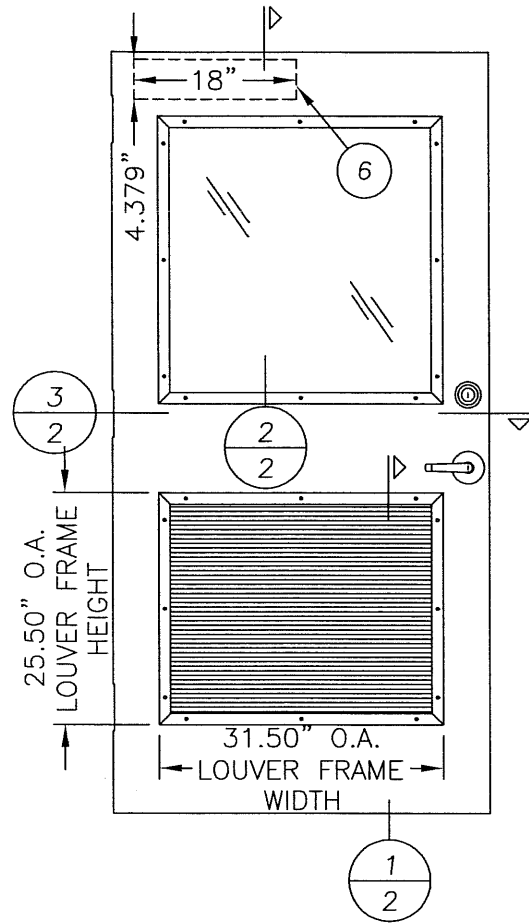
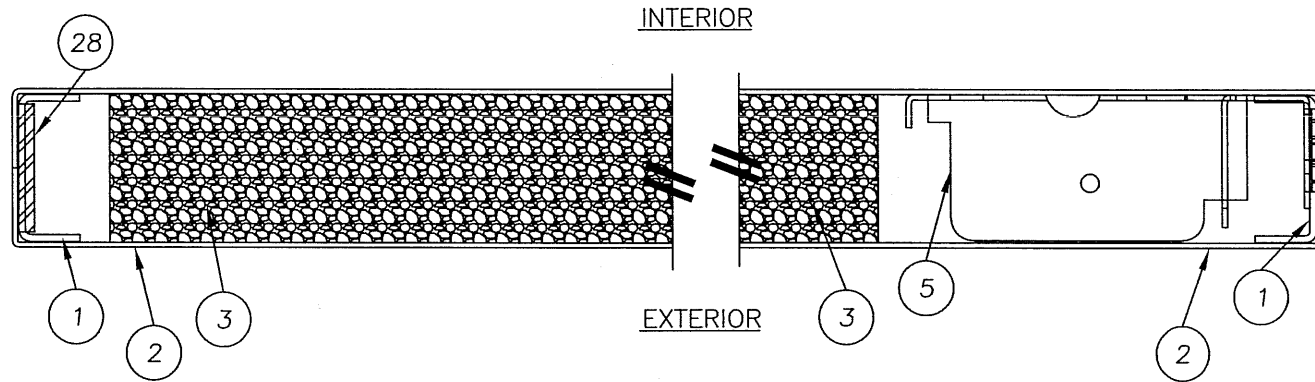


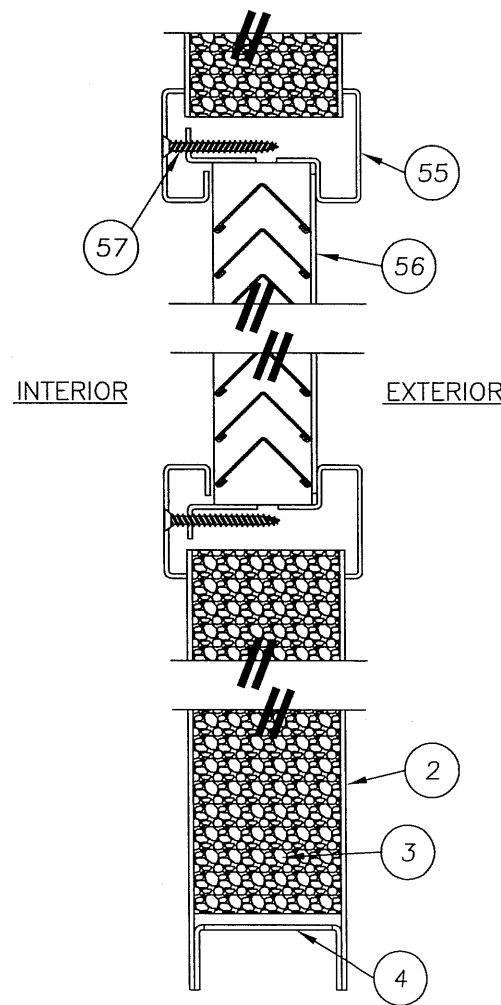
R:\A - Projects\Project Folders\Proj 1001-1100\pf1070\D. RWBC Drawings\MESKER.dwg, T2



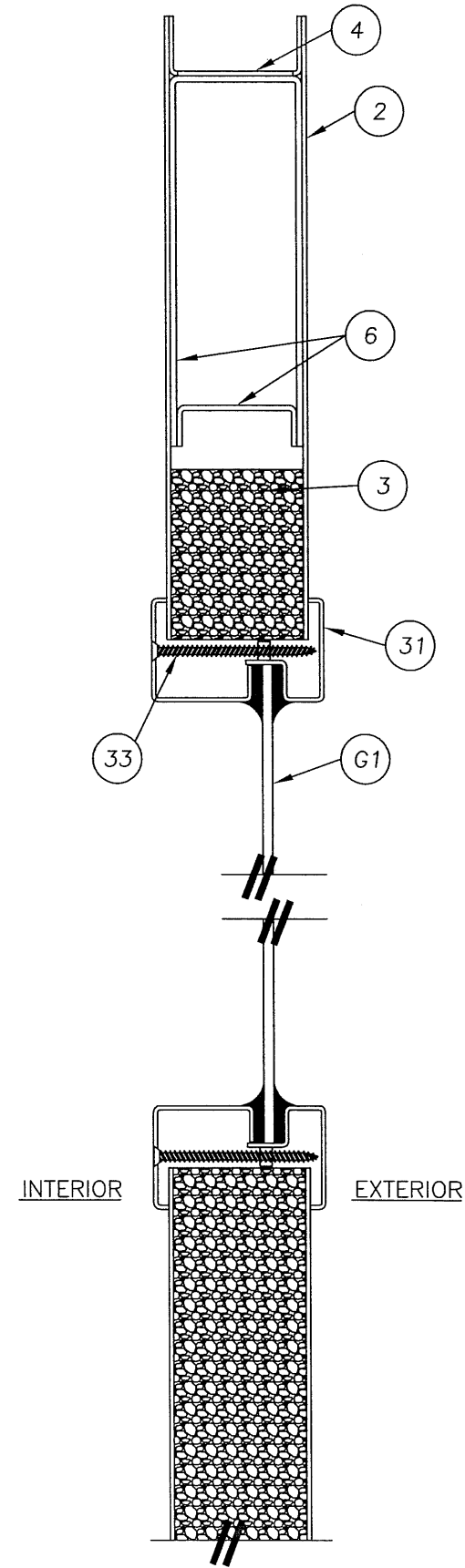
4 DOOR TOP & BOTTOM CLOSER
16GA. (.053) C.R.S.



3 HORIZONTAL CROSS SECTION

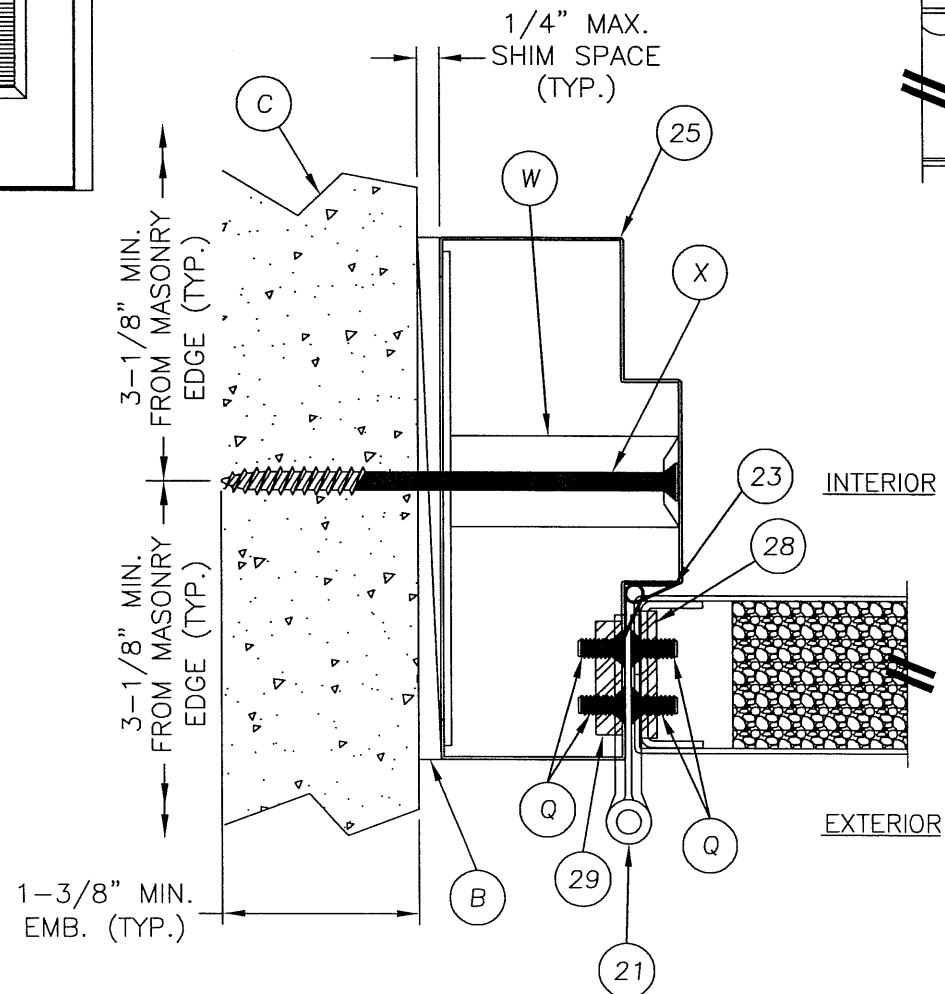
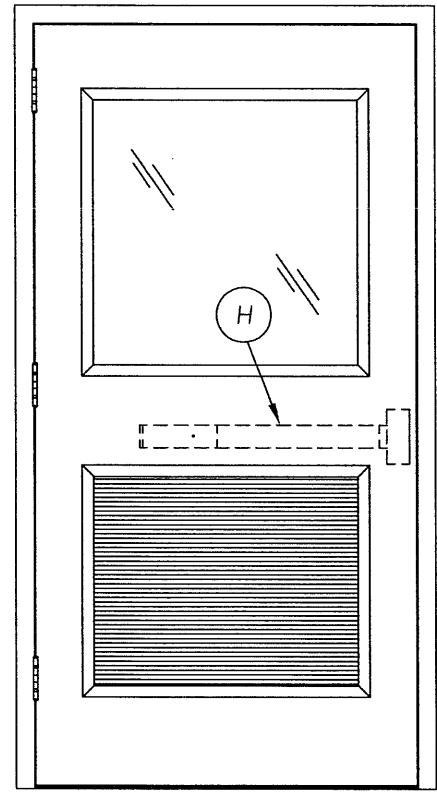
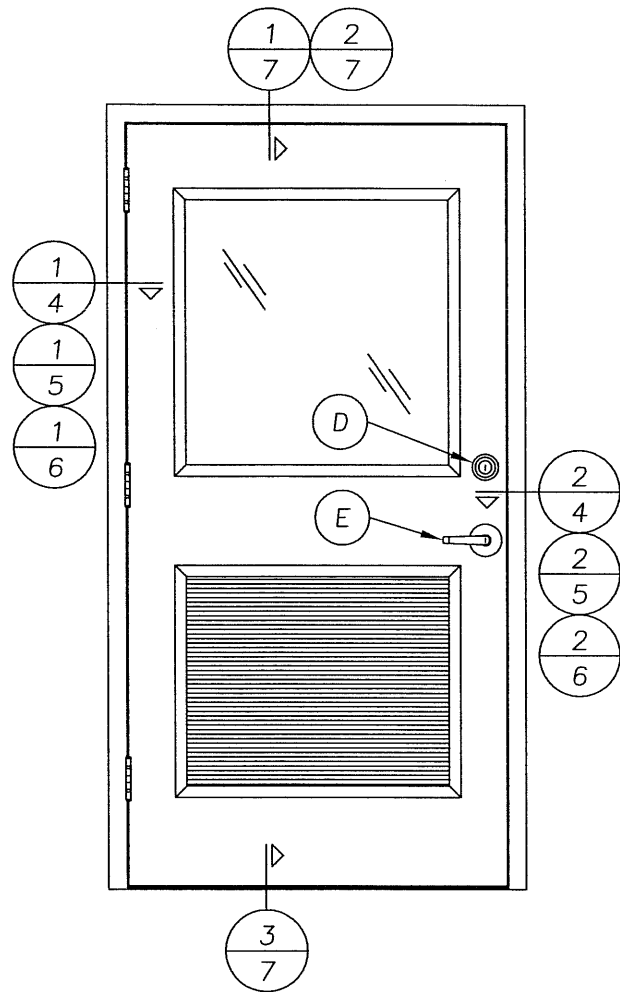


1 VERTICAL CROSS SECTION

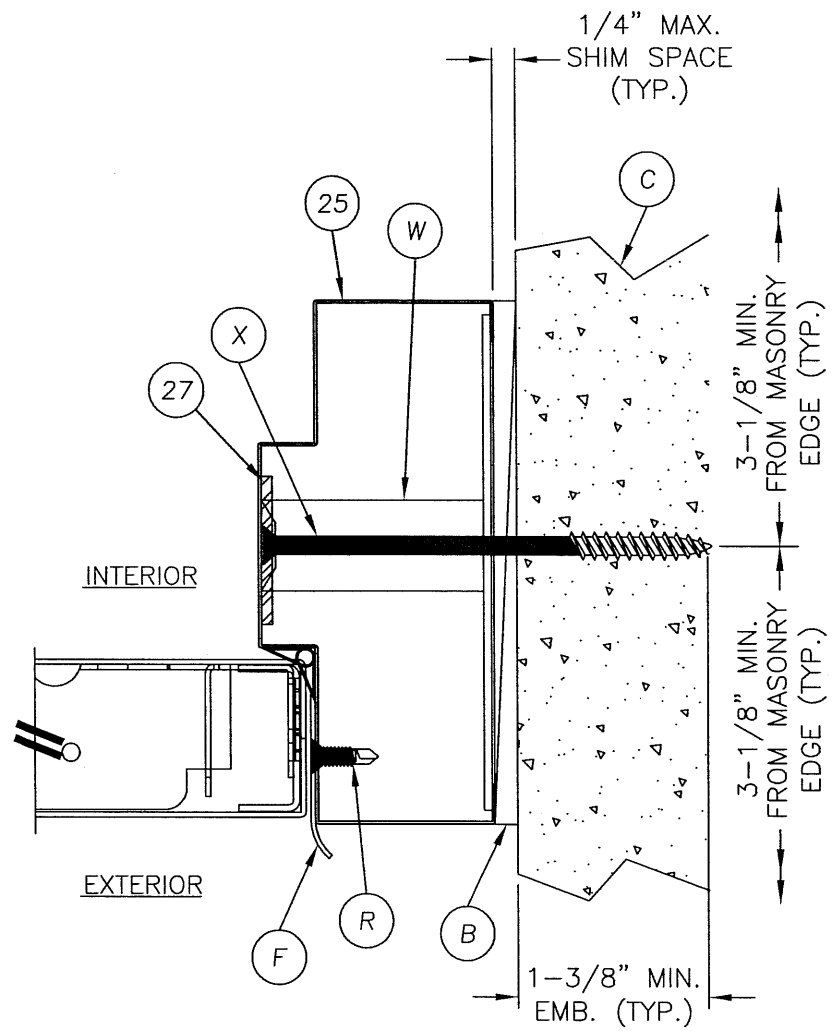


2 VERTICAL CROSS SECTION

Documents Prepared By: <i>RW</i> BUILDING CONSULTANTS, INC. P.O. Box 230 Valrico FL 33595 Phone No.: 813.659.9197 Florida Board of Professional Engineers Certificate Of Authorization No. 9813 <i>Wendell W. Maney</i> 2-9-07 Wendell W. Maney, P.E. No. 54158	
PRODUCT: MESKER N & D PANELS "NON-IMPACT"	REVISIONS
PART OR ASSEMBLY: DOOR PANEL DETAILS (D PANEL)	NO. DATE BY
DATE: 12/13/06	
SCALE: N.T.S.	
DWG. BY: AEM	
CHK. BY: WWH	
DRAWING NO.: FL-3296	
SHEET 2 OF 11	



1 HORIZONTAL CROSS SECTION
 4 @ HINGE
 SHOWN WITH TUBE ANCHOR
 SEE DOOR PANEL DETAILS FOR
 OPTIONAL PANEL TYPES

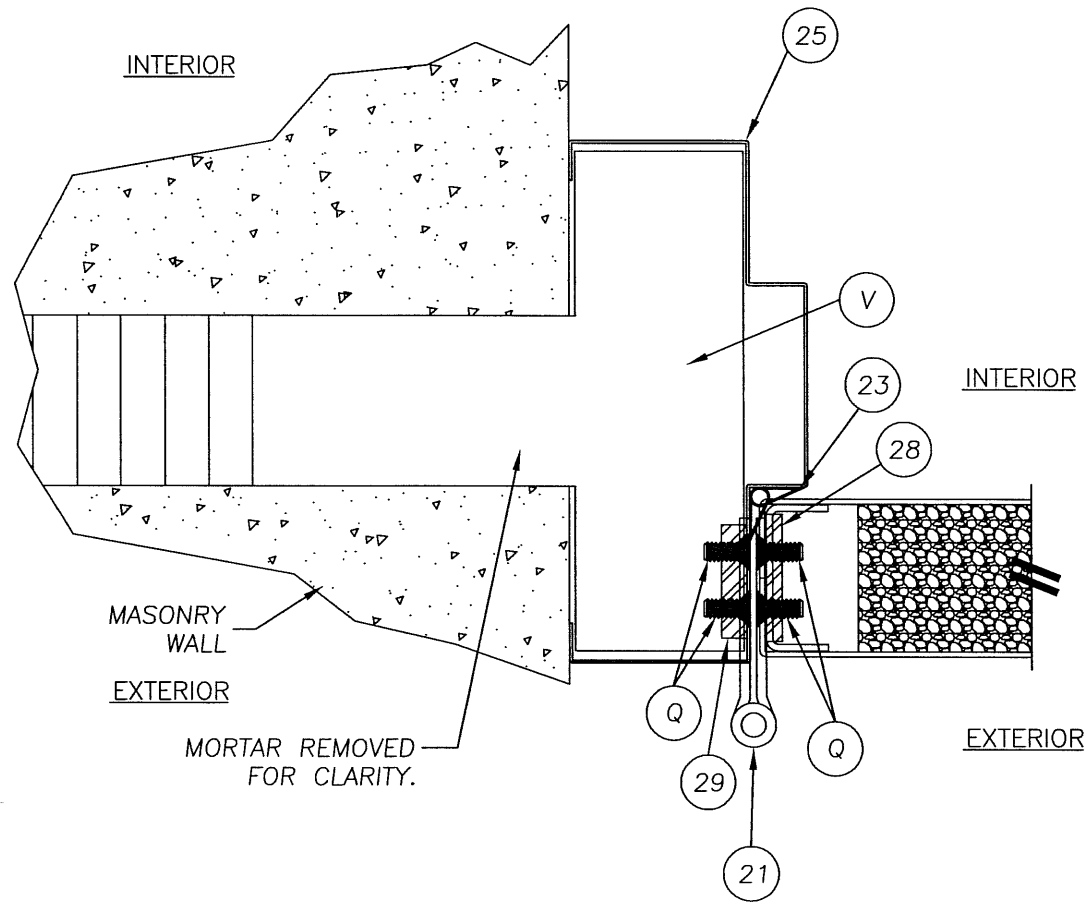


2 HORIZONTAL CROSS SECTION
 4 @ HINGE
 SHOWN WITH TUBE ANCHOR
 SEE DOOR PANEL DETAILS FOR
 OPTIONAL PANEL TYPES

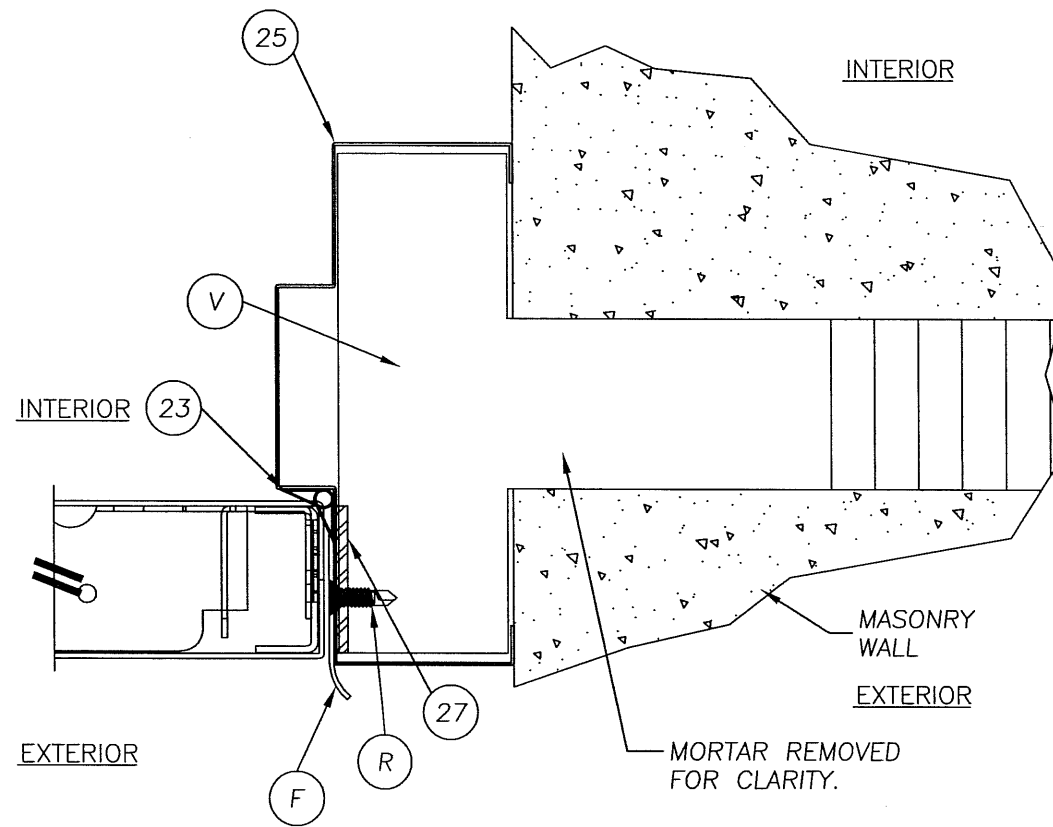
Documents Prepared By:		R.W. BUILDING CONSULTANTS, INC. P.O. Box 230 Vairico FL. 33595 Phone No.: 813.659.9197	
PRODUCT:		MESKER N & D PANELS "NON-IMPACT"	
PART OR ASSEMBLY:		HORIZONTAL CROSS SECTIONS	
NO.	DATE	BY	REVISIONS
DATE: 12/13/06			
SCALE: N.T.S.			
DWG. BY: AEM			
CHK. BY: WWH			
DRAWING NO.: FL-3296			
SHEET 4 OF 11			

Florida Board of Professional Engineers
 Certificate Of Authorization No. 9813
Wendell W. Haney 29-07
 Wendell W. Haney, P.E. No. 54158

R:\A - Projects\Project Folders\Proj 1001-1100\pf1070\D. RWBC Drawings\MESKER.dwg, T5

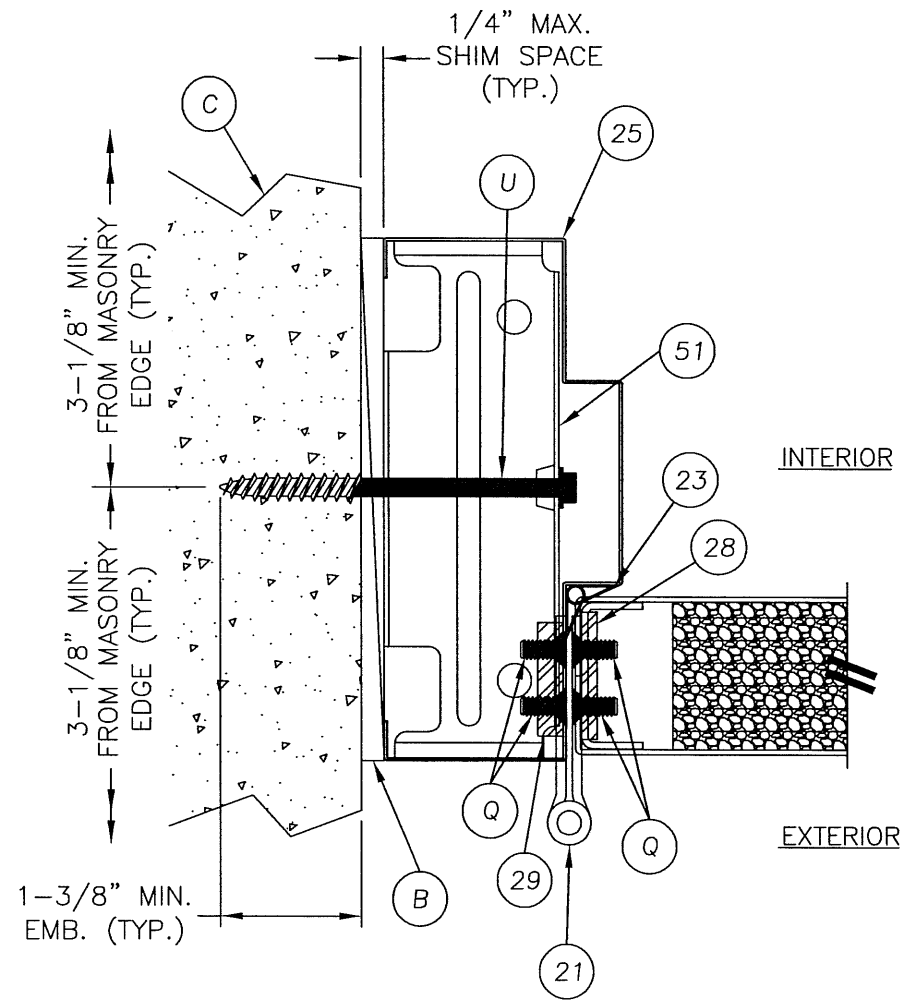


1 HORIZONTAL CROSS SECTION
 5 @ LATCH
 SHOWN WITH TEE ANCHOR
 SEE DOOR PANEL DETAILS FOR
 OPTIONAL PANEL TYPES

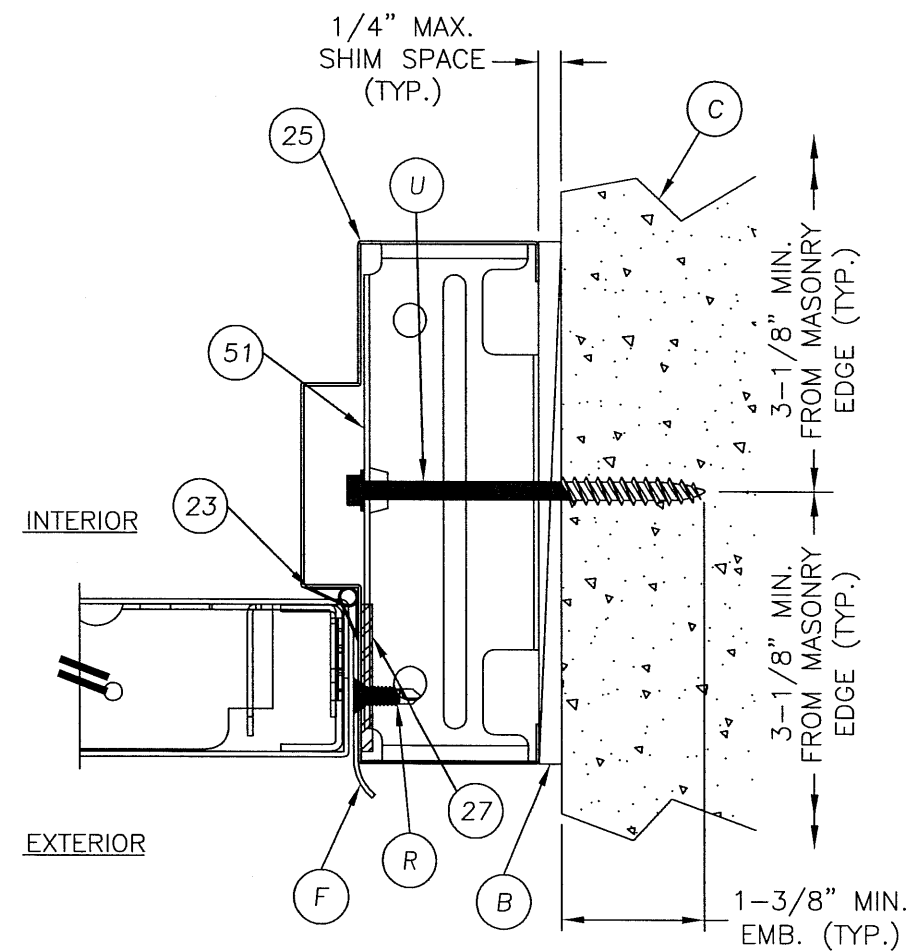


2 HORIZONTAL CROSS SECTION
 5 @ LATCH
 SHOWN WITH TEE ANCHOR
 SEE DOOR PANEL DETAILS FOR
 OPTIONAL PANEL TYPES

Documents Prepared By:		RWBC BUILDING CONSULTANTS, INC. P.O. Box 230 Valrico FL 33595 Phone No.: 813.659.9197 Florida Board of Professional Engineers Certificate Of Authorization No. 9813 <i>Wendell W. Henney</i> 2-9-07 Wendell W. Henney, P.E. No. 54158	
PRODUCT:	MESKER N & D PANELS "NON-IMPACT"		
PART OR ASSEMBLY:	HORIZONTAL CROSS SECTIONS		
		NO.	DATE
		BY	
REVISIONS			
DATE: 12/13/06			
SCALE: N.T.S.			
DWG. BY: AEM			
CHK. BY: WWH			
DRAWING NO.: FL-3296			
SHEET 5 of 11			

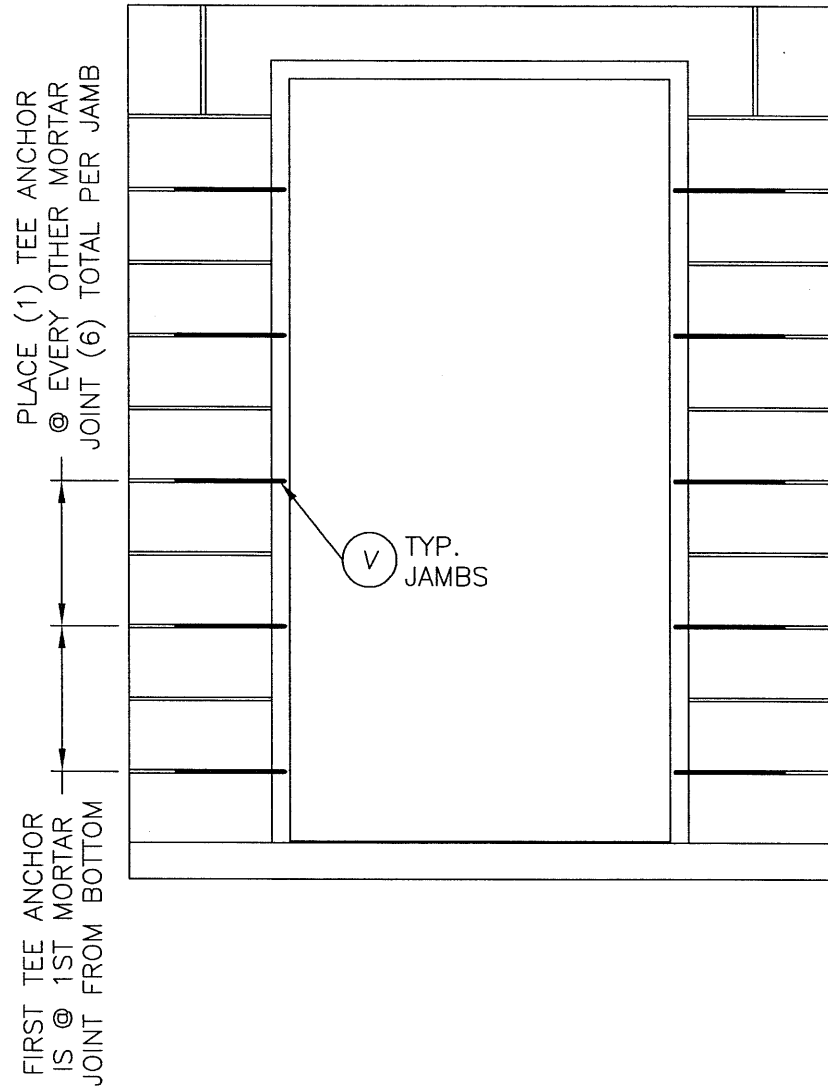


1 HORIZONTAL CROSS SECTION
 6 @ LATCH
 SHOWN WITH UNIVERSAL ANCHOR
 SEE DOOR PANEL DETAILS FOR
 OPTIONAL PANEL TYPES



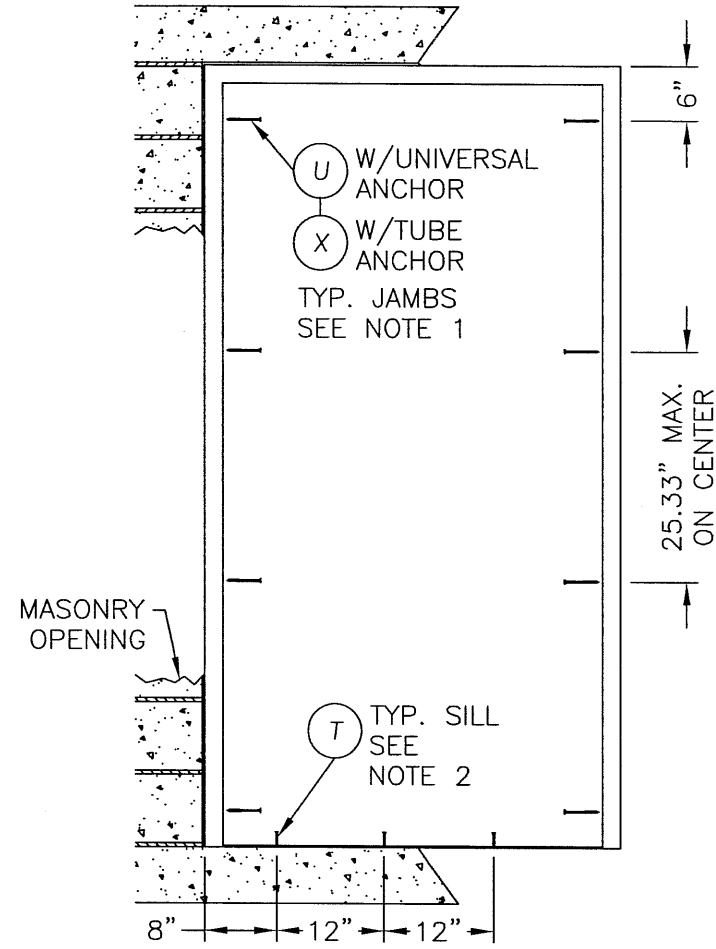
2 HORIZONTAL CROSS SECTION
 6 @ LATCH
 SHOWN WITH UNIVERSAL ANCHOR
 SEE DOOR PANEL DETAILS FOR
 OPTIONAL PANEL TYPES

Documents Prepared By: RW BUILDING CONSULTANTS, INC. P.O. Box 230 Vairico FL. 33595 Phone No.: 813.659.9197 Florida Board of Professional Engineers Certificate Of Authorization No. 9813 <i>Wendell W. Higley</i> 2-9-07 Wendell W. Higley, P.E. No. 54158																
PRODUCT: MESKER N & D PANELS "NON-IMPACT" PART OR ASSEMBLY: HORIZONTAL CROSS SECTIONS	REVISIONS <table border="1" style="width: 100%; border-collapse: collapse;"> <thead> <tr> <th style="width: 10%;">NO.</th> <th style="width: 10%;">DATE</th> <th style="width: 80%;">BY</th> </tr> </thead> <tbody> <tr> <td> </td> <td> </td> <td> </td> </tr> <tr> <td> </td> <td> </td> <td> </td> </tr> <tr> <td> </td> <td> </td> <td> </td> </tr> <tr> <td> </td> <td> </td> <td> </td> </tr> </tbody> </table>	NO.	DATE	BY												
NO.	DATE	BY														
DATE: 12/13/06 SCALE: N.T.S. DWG. BY: AEM CHK. BY: WWH DRAWING NO.: FL-3296 SHEET 6 OF 11																

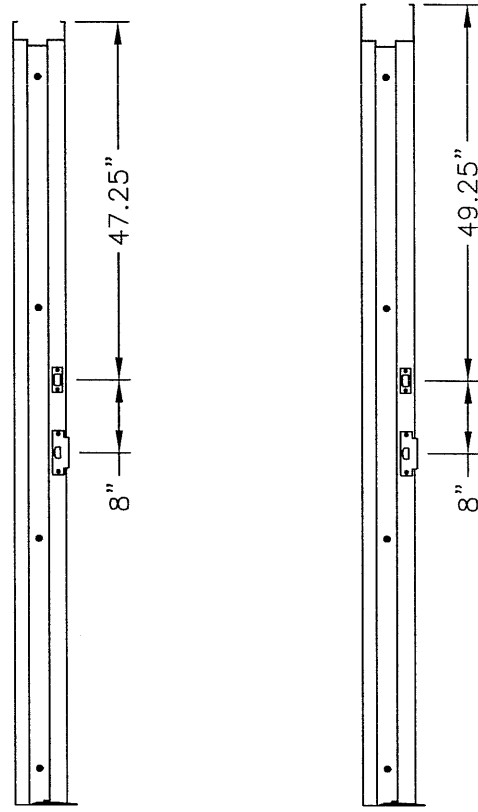


NOTES:

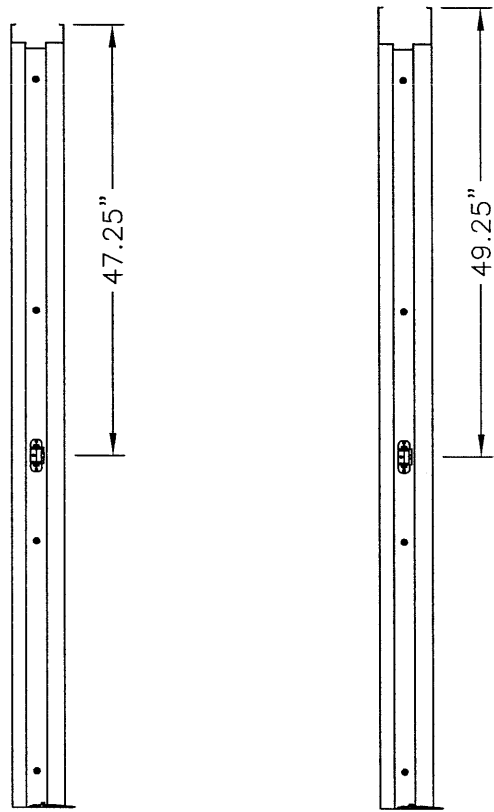
1. 5/16" TAPCONS REQUIRE A MINIMUM 3-1/8" CLEARANCE TO MASONRY EDGES AND A MINIMUM 3-3/4" CLEARANCE TO ADJACENT TAPCONS. UNLESS OTHERWISE NOTED BY CONCRETE SCREW MANUFACTURER.
2. 1/4" ITW CONCRETE SCREWS ANCHORING FRAME AND/OR SILL REQUIRE A MINIMUM 2-1/2" CLEARANCE TO MASONRY EDGES AND A MINIMUM 3" CLEARANCE TO ADJACENT CONCRETE SCREWS UNLESS OTHERWISE NOTED BY CONCRETE SCREW MANUFACTURER.



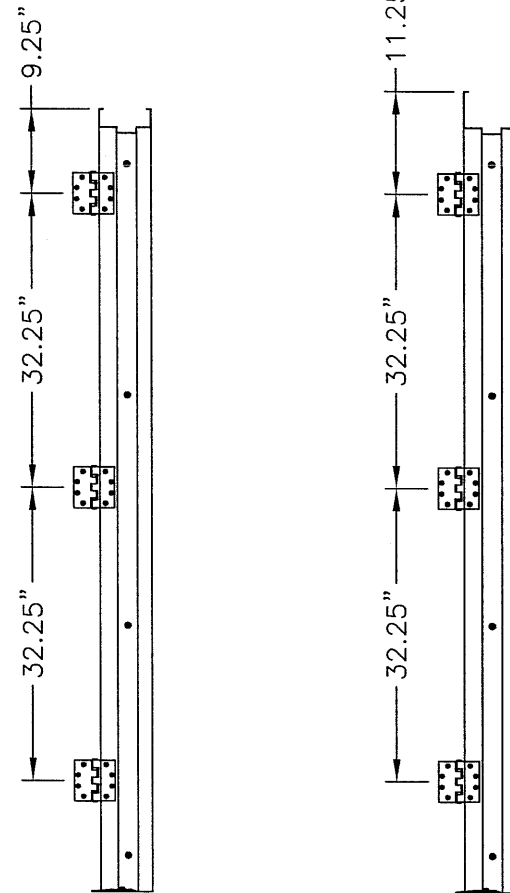
Documents Prepared By: RW BUILDING CONSULTANTS, INC. P.O. Box 230 Vairico FL. 33595 Phone No.: 813.659.9197 Florida Board of Professional Engineers Certificate Of Authorization No. 9813 <i>Wendell W. Harley</i> 2-9-07 Wendell W. Harley, P.E. No. 54158	
PRODUCT: MESKER N & D PANELS "NON-IMPACT" PART OR ASSEMBLY: ANCHORING LOCATIONS	NO. DATE BY REVISIONS
DATE: 12/13/06 SCALE: N.T.S. DWG. BY: AEM CHK. BY: WWH DRAWING NO.: FL-3296 SHEET 8 OF 11	



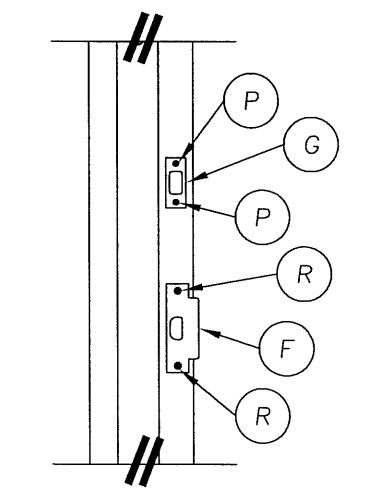
STRIKE PLATE LOCATIONS 2" HEAD STRIKE PLATE LOCATIONS 4" HEAD



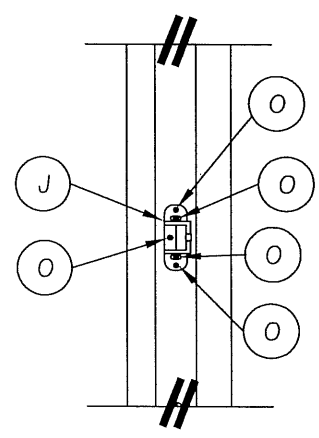
STRIKE PLATE LOCATION 2" HEAD STRIKE PLATE LOCATION 4" HEAD



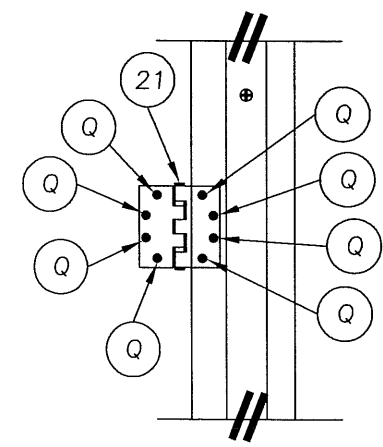
HINGE LOCATIONS 2" HEAD HINGE LOCATIONS 4" HEAD



STRIKE PLATE DETAIL ANSI STRIKE & DEADBOLT



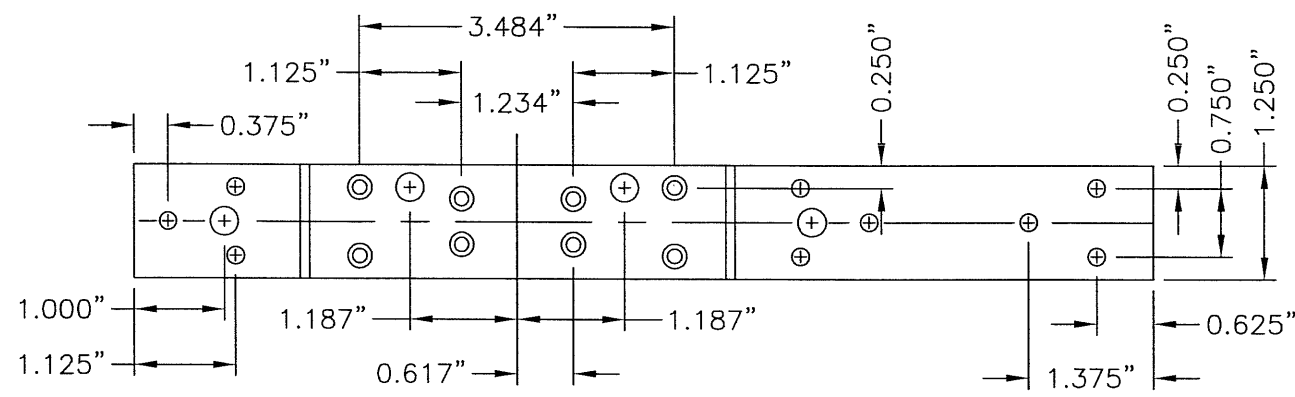
RIM STRIKE DETAIL



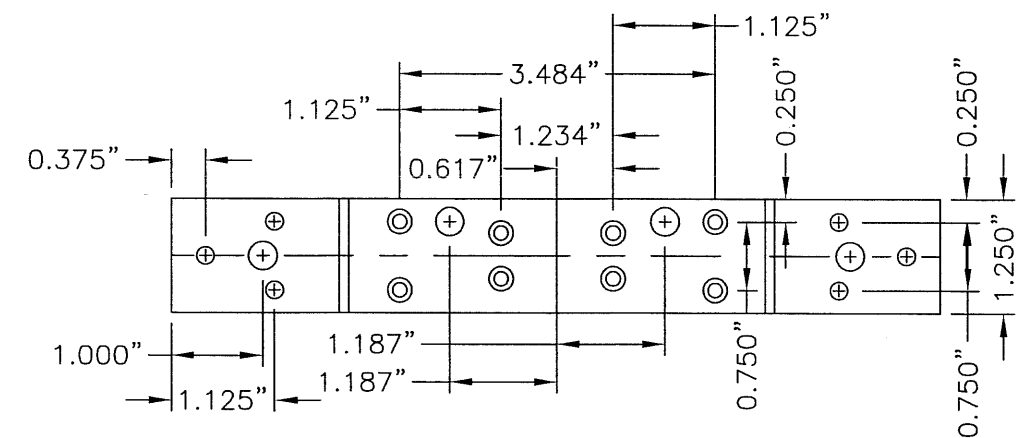
HINGE DETAIL

Documents Prepared By:		RW BUILDING CONSULTANTS, INC. P.O. Box 230 Vairico FL, 33595 Phone No.: 813.659.9197 Florida Board of Professional Engineers Certificate Of Authorization No. 9813 <i>Wendell W. Haney</i> 2-9-07 Wendell W. Haney, P.E. No. 54158	
PRODUCT:	MESKER N & D PANELS "NON-IMPACT"	NO.	DATE
PART OR ASSEMBLY:	ANCHORING DETAILS	BY	REVISIONS
		NO.	DATE
		BY	REVISIONS
DATE: 12/13/06		SCALE: N.T.S.	
DWG. BY: AEM		CHK. BY: WWH	
DRAWING NO.: FL-3296		SHEET 9 OF 11	

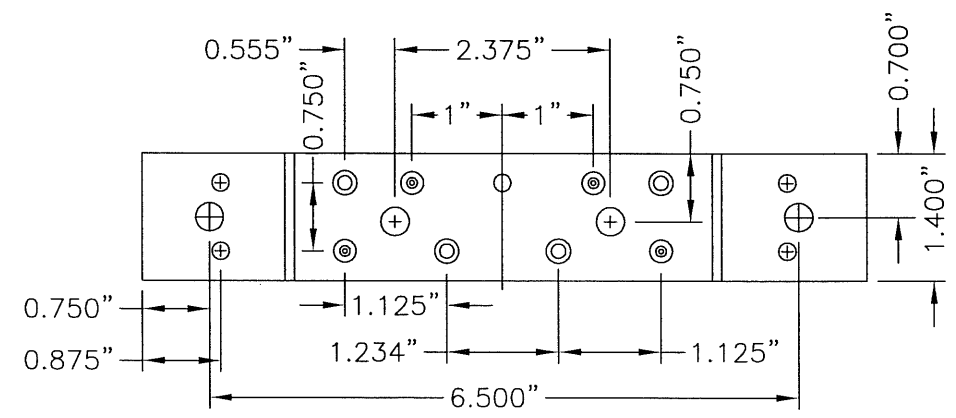
R:\A - Projects\Project Folders\Proj 1001-1100\pf1070\D. RWBC Drawings\MESKER.dwg, T10



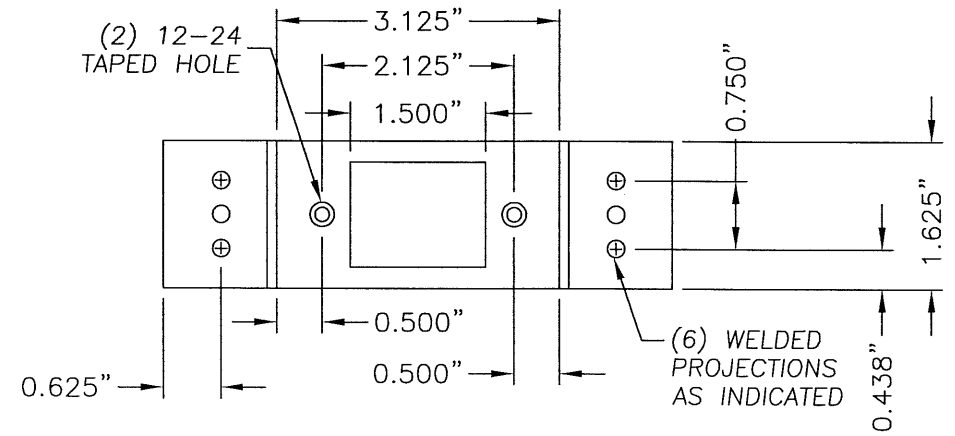
22 STANDARD (LONG) DOOR HINGE
TOP HINGE REINFORCEMENT



29 FRAME HINGE
REINFORCEMENT



28 STANDARD (SHORT) DOOR HINGE
MIDDLE & BOTTOM HINGE REINFORCEMENT



27 FRAME DEADBOLT
REINFORCEMENT

Documents Prepared By:
RW BUILDING CONSULTANTS, INC.
 P.O. Box 230 Valrico FL 33595
 Phone No: 813.659.9197
 Florida Board of Professional Engineers
 Certificate Of Authorization No. 9813
Wendell W. Hagey, P.E. 2-9-07
 No. 54158

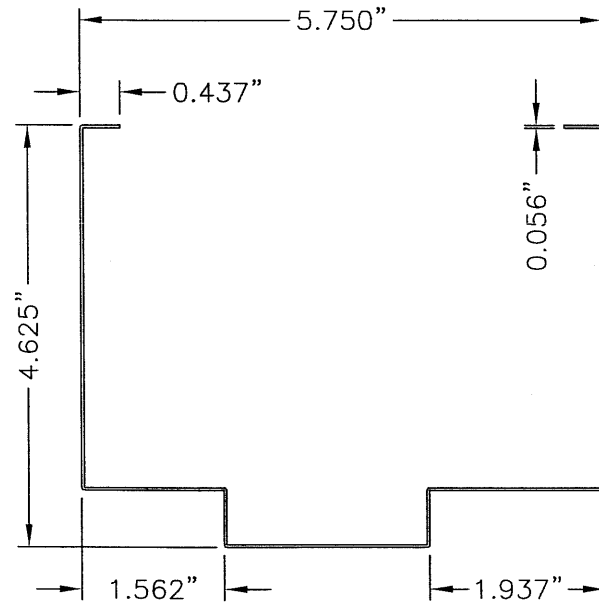
PRODUCT:
 MESKER
 N & D PANELS "NON-IMPACT"
 PART OR ASSEMBLY:
 COMPONENTS

NO.	DATE	BY

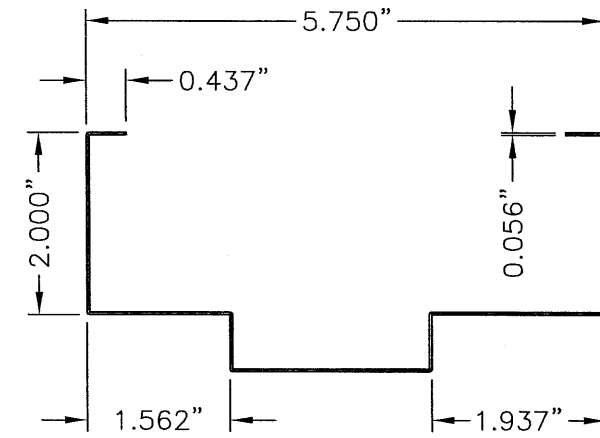
DATE: 12/13/06
 SCALE: N.T.S.
 DWG. BY: AEM
 CHK. BY: WWH
 DRAWING NO.: FL-3296
 SHEET 10 OF 11

R:\A - Projects\Project Folders\Proj 1001-1100\p1070\1070.D. RWBC Drawings\MESKER.dwg, T11

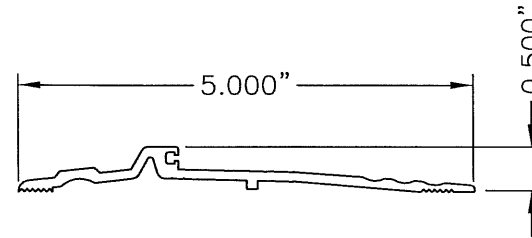
BILL OF MATERIALS		
ITEM	DESCRIPTION	MATERIAL
B	1/4" MAX. SHIM SPACE	WOOD
C	MASONRY	CONCRETE
D	DESIGN HARDWARE D25 DEADBOLT	STEEL
E	DESIGN HARDWARE X82 LOCKSET ASSEMBLY	STEEL
F	LATCH STRIKE PLATE	BRASS
G	DEADBOLT STRIKE PLATE	STEEL
H	VON DUPRIN 99 SERIES PANIC HARDWARE	STEEL
J	RIM PANIC STRIKE PLATE	STEEL
O	#12 X 1" H.H. SELF TAPPING SCREW	STEEL
P	#8 X 3/4" PFH SCREW	STEEL
Q	#12 X 1/2" MACHINE SCREW	STEEL
R	#12 X 3/4" PFH SELF TAPPING MACHINE SCREW	STEEL
T	1/4" X 2-1/4" TAPCON	STEEL
U	5/16" X 3-3/4" H.H. TAPCON	STEEL
V	MASONRY 'TEE' ANCHOR (MESKER PFMT5)	STEEL
W	TUBE ANCHOR	STEEL
X	5/16" X 5" TAPCON	STEEL
1	DOOR STILE EDGE REINFORCEMENT (D DOOR)	STEEL
2	DOOR SKIN (.055" THK. BODY & COVER) (D DOOR)	STEEL
3	FOAM (D DOOR) 1.0 PCF MIN. DENSITY	POLYSTYRENE
4	DOOR TOP & BOTTOM CLOSER (D DOOR)	STEEL
5	LOCK BOX REINFORCEMENT	STEEL
6	CLOSER REINFORCEMENT	STEEL
11	DOOR SKIN (.055" THK. BODY & COVER) (N DOOR)	STEEL
12	FOAM (N DOOR) 1.0 PCF MIN. DENSITY	POLYSTYRENE
13	DOOR TOP & BOTTOM CLOSER (N DOOR)	STEEL
21	HINGE	STEEL
22	STD. (LONG) DOOR HINGE REIN. (TOP HINGE MESKER PDNLHR 450)	STEEL
23	WEATHERSTRIP	FOAM
24	THRESHOLD WEATHERSTRIP (NATIONAL GUARD PRODUCTS, INC. ITEM #33)	VINYL
25	FRAME 5-3/4" MIN. WITH 2" HEAD	STEEL
26	FRAME 5-3/4" MIN. WITH 4" HEAD	STEEL
27	14GA. (.075") C.R.S. 161 DEADBOLT FRAME REINFORCEMENT (PFDBR4)	STEEL
28	STD. (SHORT) DOOR HINGE REIN.(MIDDLE & BOTTOM)MESKER PDNHR450)	STEEL
29	STD. 4-1/2" FRAME HINGE REINFORCEMENT 7GA.(.175" MESKER PF4HR)	STEEL
31	LITE FRAME	STEEL
33	#6 X 2" PFH SCREW	STEEL
34	TREMCO SPECTREM II GLAZING COMPOUND	SILICONE
40	OUTSWING THRESHOLD NATIONAL GUARD PRODUCTS, INC. #896	ALUMINUM
41	OUTSWING THRESHOLD NATIONAL GUARD PRODUCTS, INC. #950	ALUMINUM
51	FRAME REINFORCEMENT	STEEL
55	LOUVER FRAME	STEEL
56	LOUVER PANEL	STEEL
57	#6 X 1-1/4" PFH SCREW	STEEL
G1	1/8" THK. MONOLITHIC GLASS 1/8" TEMPERED	GLASS



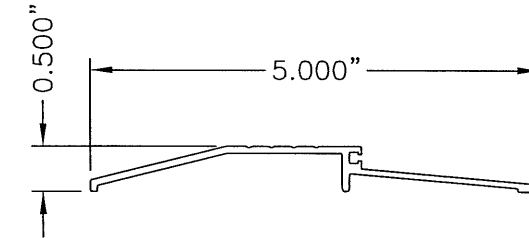
26 FRAME



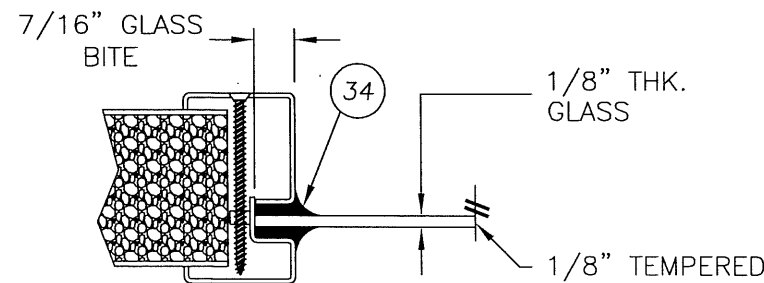
25 FRAME



40 THRESHOLD



41 THRESHOLD



G1 GLAZING DETAIL
9/16" MONOLITHIC GLASS

Documents Prepared By:
RW BUILDING CONSULTANTS, INC.
 P.O. Box 230 Valrico FL 33595
 Phone No.: 813.659.9197
 Florida Board of Professional Engineers
 Certificate Of Authorization No. 9813
Wendell W. Haney 2-9-07
 Wendell W. Haney, P.E. No. 54158

PRODUCT:
 MESKER
 N & D PANELS "NON-IMPACT"
 PART OR ASSEMBLY:
 BILL OF MATERIALS, GLAZING
 DETAIL & COMPONENTS

NO.	DATE	BY	REVISIONS

DATE: 12/13/06
 SCALE: N.T.S.
 DWG. BY: AEM
 CHK. BY: WWH
 DRAWING NO.:
 FL-3296
 SHEET 11 OF 11