

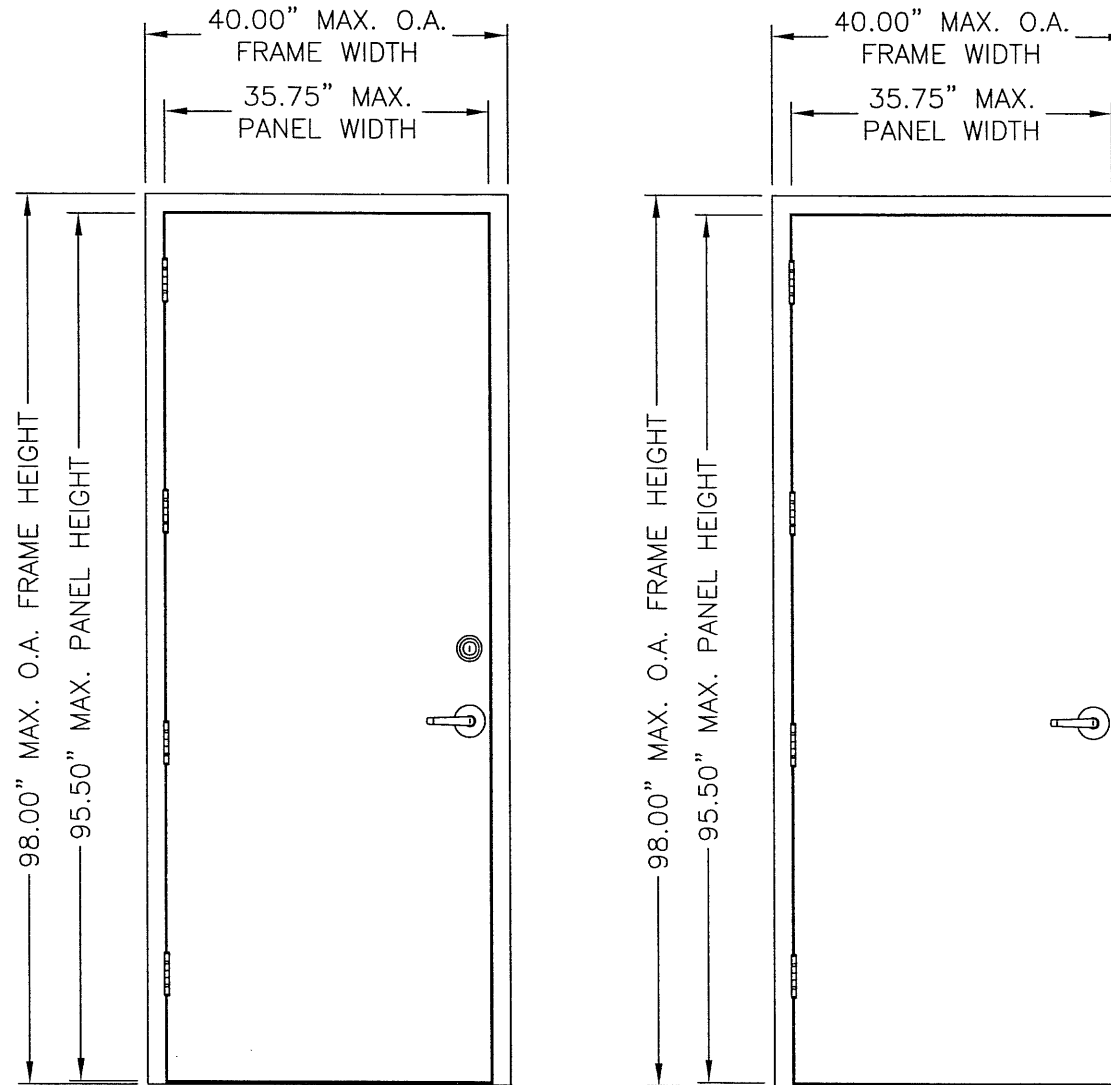
# MESKER DOOR INC.

3440 STANWOOD BLVD.  
 HUNTSVILLE, AL. 35811  
 Phone: 256-851-6670

## SINGLE OPAQUE DOOR "IMPACT" OUTSWING

### GENERAL NOTES

- THIS PRODUCT HAS BEEN EVALUATED AND IS IN COMPLIANCE WITH THE 2004 FLORIDA BUILDING CODE STRUCTURAL REQUIREMENTS EXCLUDING THE "HIGH VELOCITY HURRICANE ZONE".
- PRODUCT ANCHORS SHALL BE AS LISTED AND SPACED AS SHOWN ON DETAILS. ANCHOR EMBEDMENT TO BASE MATERIAL SHALL BE BEYOND WALL DRESSING OR STUCCO.
- WHEN USED IN AREAS OUTSIDE OF THE "HVHZ" REQUIRING WIND-BORNE DEBRIS PROTECTION THIS PRODUCT COMPLIES WITH SECTION 1609.1.4 OF THE FLORIDA BUILDING CODE AND DOES NOT REQUIRE AN IMPACT RESISTANT COVERING. THIS PRODUCT MEETS MISSILE LEVEL "D" AND INCLUDES WIND ZONE 4 AS DEFINED IN ASTM E1996.
- CONDITIONS NOT COVERED BY THIS DRAWING ARE SUBJECT TO FURTHER ENGINEERING ANALYSIS.



N & D DOOR

N & D DOOR

DOOR TYPE	OVERALL FRAME DIMENSION	SWING	LOCK TYPE	DESIGN PRESSURE	
				POSITIVE	NEGATIVE
D	40.00" X 98.00"	OUTSWING	161 LATCH & DEADBOLT	+80.0	-80.0
		OUTSWING	SCHLAGE LATCH & DEADBOLT	+80.0	-80.0
		OUTSWING	SCHLAGE LATCH	+55.0	-55.0
N	40.00" X 98.00"	OUTSWING	161 LATCH & DEADBOLT	+80.0	-80.0
		OUTSWING	SCHLAGE LATCH & DEADBOLT	+80.0	-80.0
		OUTSWING	SCHLAGE LATCH	+55.0	-55.0

TABLE OF CONTENTS	
SHEET #	DESCRIPTION
1	TYPICAL ELEVATIONS, DESIGN PRESSURES & GENERAL NOTES
2	DOOR PANEL DETAILS (D PANEL)
3	DOOR PANEL DETAILS (N PANEL)
4	HORIZONTAL CROSS SECTIONS
5	HORIZONTAL CROSS SECTIONS
6	HORIZONTAL CROSS SECTIONS
7	VERTICAL CROSS SECTIONS
8	ANCHORING LOCATIONS
9	ANCHORING DETAILS
10	COMPONENTS
11	BILL OF MATERIALS & COMPONENTS

Documents Prepared By:  
 BUILDING CONSULTANTS, INC.  
 P.O. Box 230 Valrico FL 33595  
 Phone No.: 813.659.9197  
 Florida Board of Professional Engineers  
 Certificate Of Authorization No. 9813  
 Wendell W. Hendrix 1-29-07  
 No. 54-158

PRODUCT: MESKER "IMPACT"  
 N & D PANELS

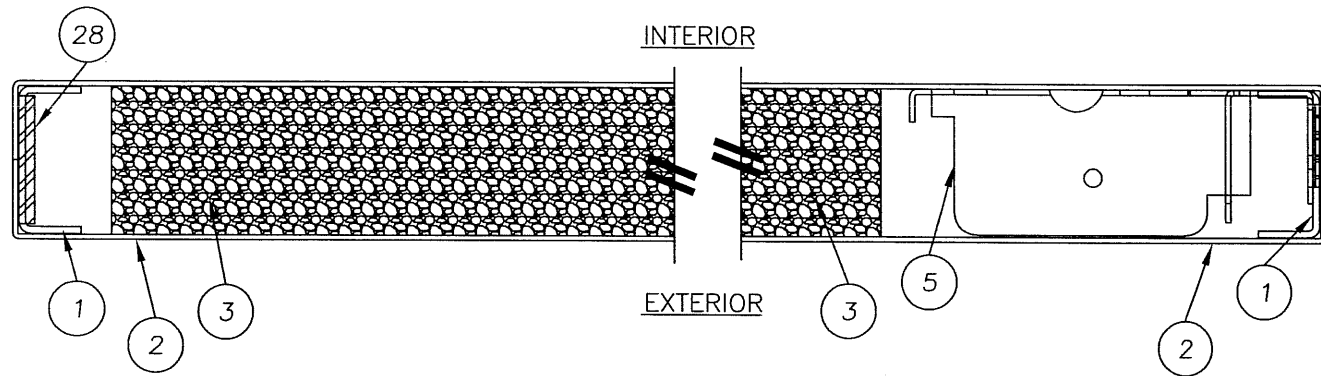
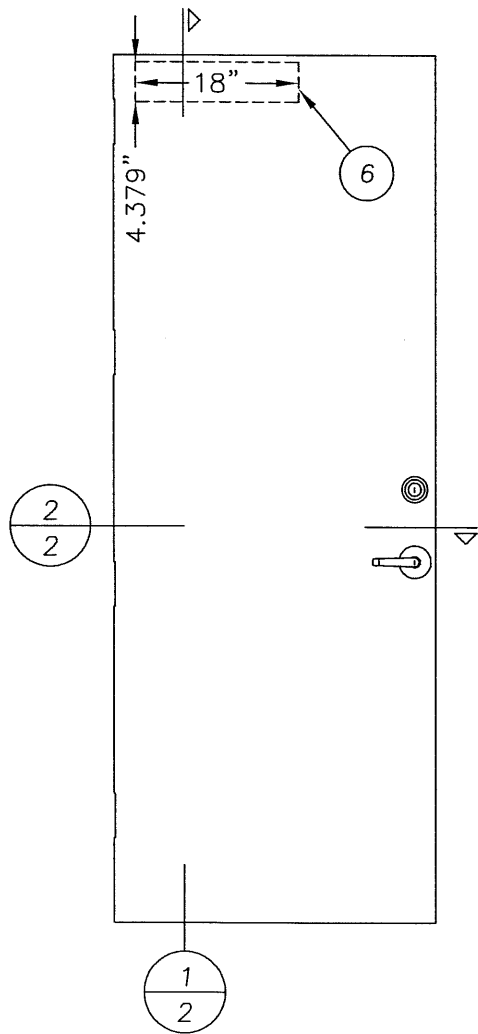
PART OR ASSEMBLY:  
 TYPICAL ELEVATIONS, DESIGN PRESSURES & GENERAL NOTES

NO.	DATE	BY	REVISIONS

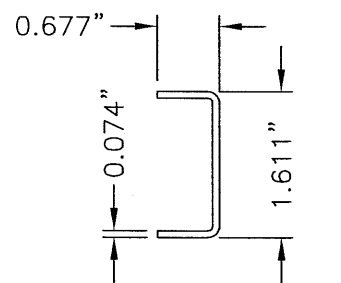
DATE: 12/13/06  
 SCALE: N.T.S.  
 DWG. BY: AEM  
 CHK. BY: WWH  
 DRAWING NO.: FL-3293  
 SHEET 1 OF 11

© 2006 R.W. BUILDING CONSULTANTS INC.

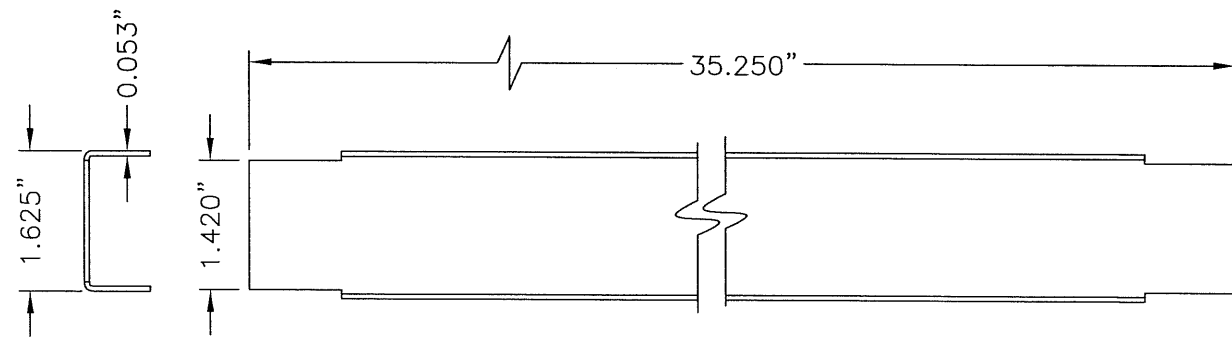
R:\A - Projects\Project Folders\Proj 1001-1100\p1070\MESKER.dwg, F2



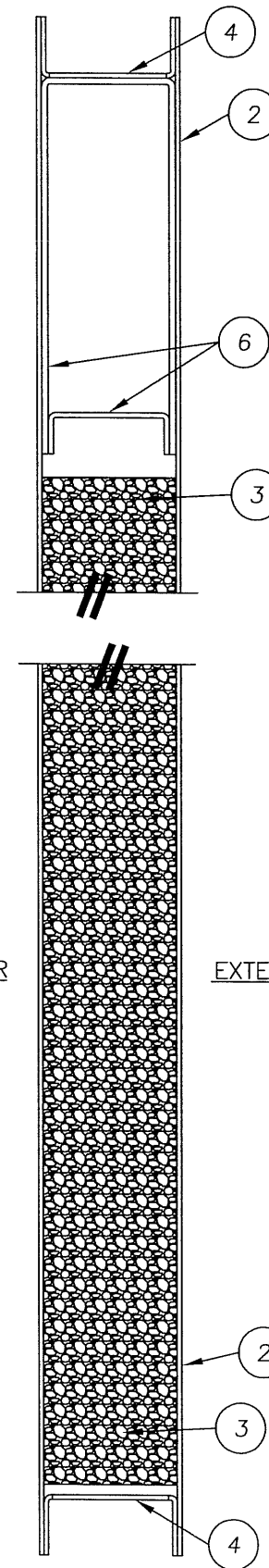
2  
2 HORIZONTAL CROSS SECTION



1 DOOR STILE EDGE REINFORCEMENT

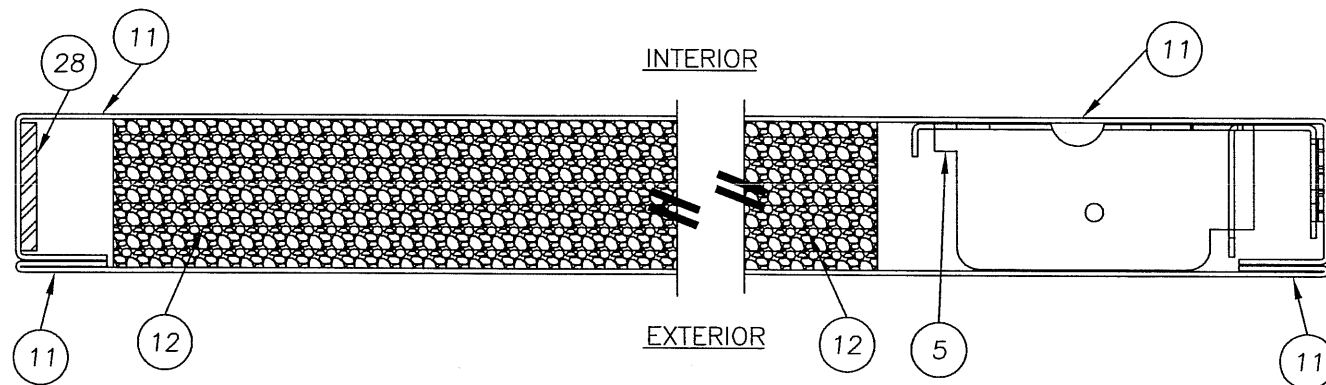
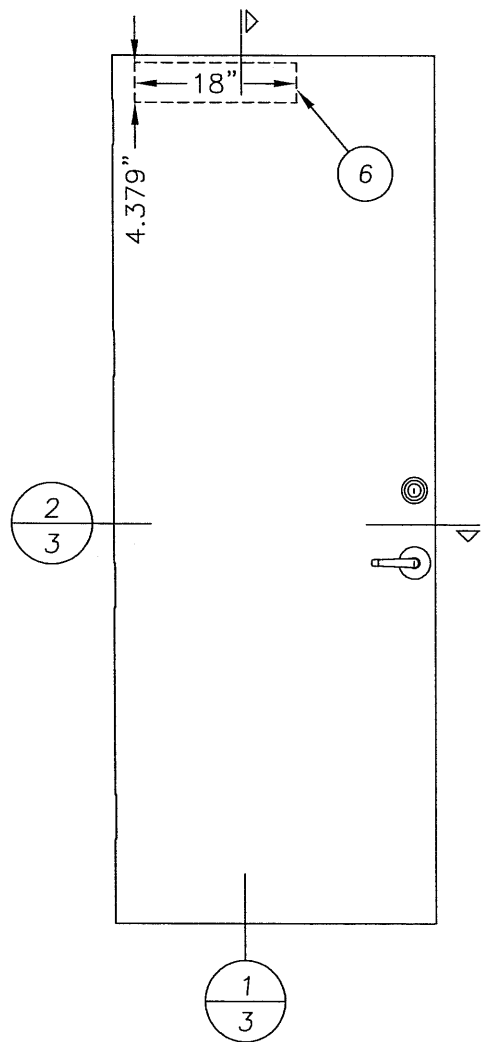


4 DOOR TOP & BOTTOM CLOSER  
16GA. (.053) C.R.S.

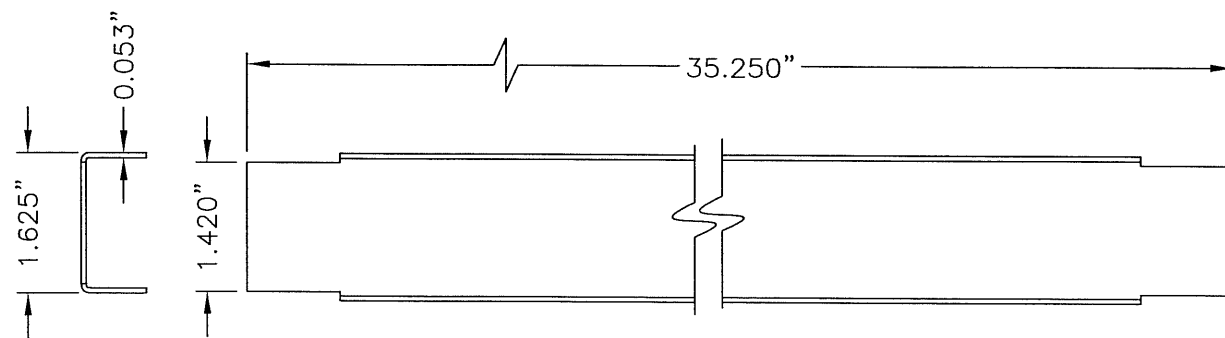


1  
2 VERTICAL CROSS SECTION

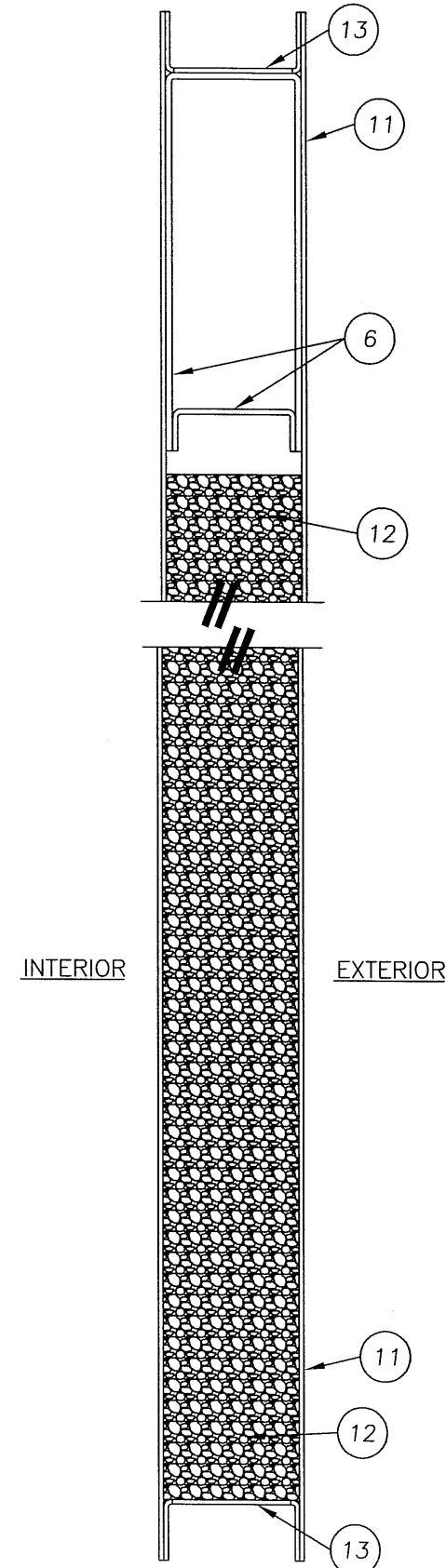
Documents Prepared By: <b>RW</b> BUILDING CONSULTANTS, INC. P.O. Box 230 Vairico FL, 33595 Phone No.: 813.659.9197	
Florida Board of Professional Engineers Certificate Of Authorization No. 9813 <i>Wendell W. Haney</i> 1-29-07 Wendell W. Haney, P.E. No. 54158	
PRODUCT: MESKER N & D PANELS "IMPACT"	REVISIONS
PART OR ASSEMBLY: DOOR PANEL DETAILS (D PANEL)	NO. DATE BY
DATE: 12/13/06	
SCALE: N.T.S.	
DWG. BY: AEM	
CHK. BY: WWH	
DRAWING NO.: FL-3293	
SHEET 2 OF 11	



2  
3 HORIZONTAL CROSS SECTION



13 DOOR TOP & BOTTOM CLOSER  
16GA. (.053) C.R.S.

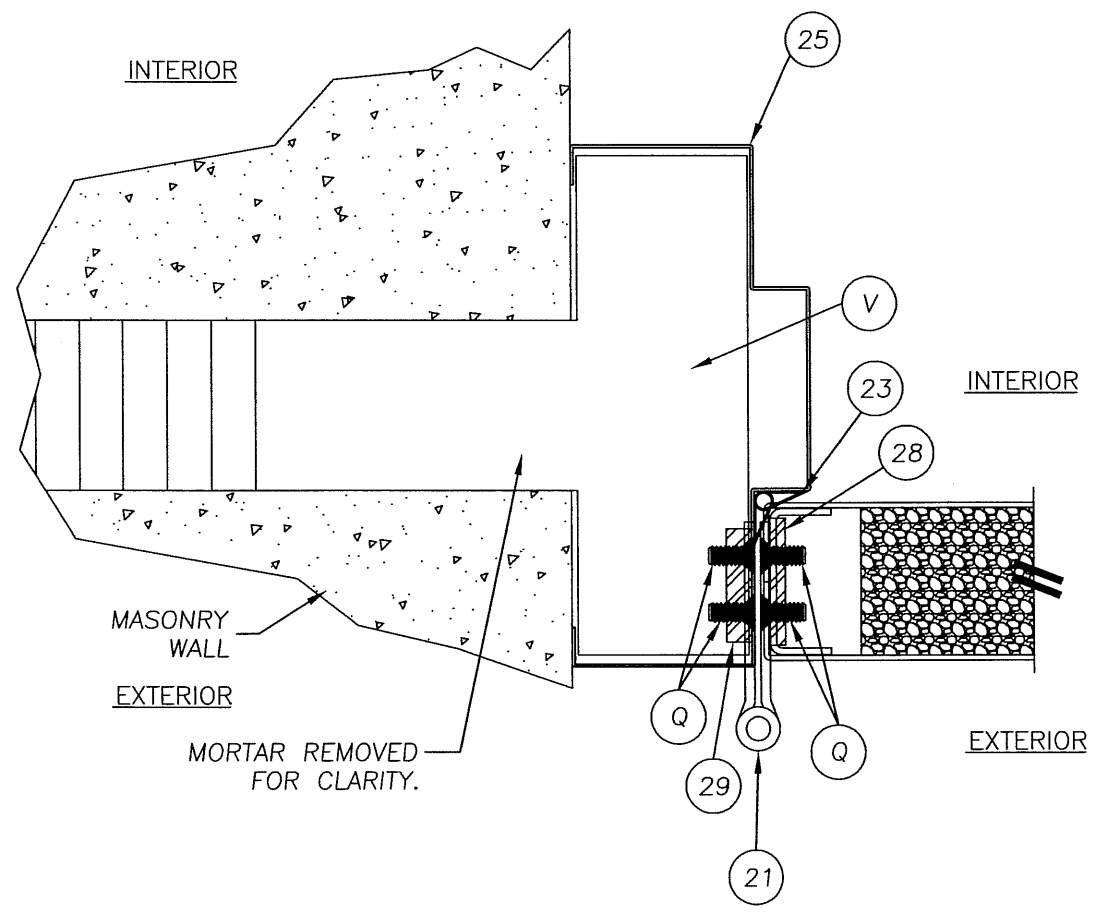


1  
3 VERTICAL CROSS SECTION

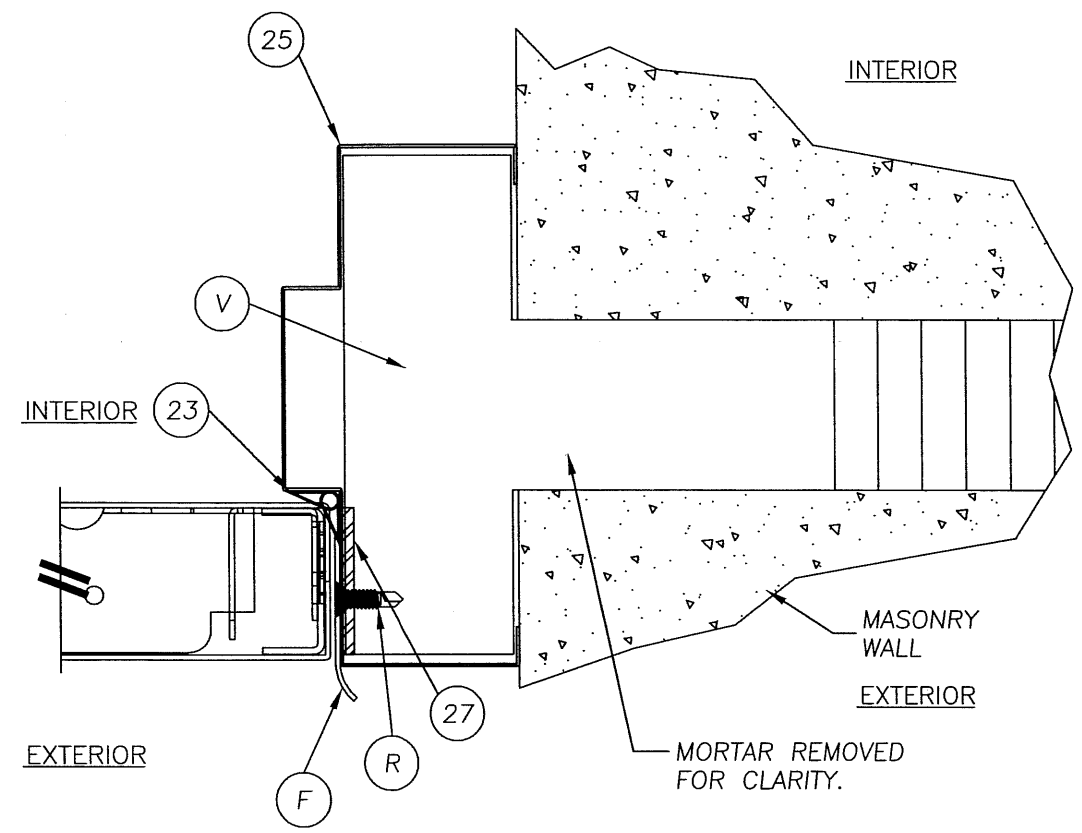
Documents Prepared By: <b>RW</b> BUILDING CONSULTANTS, INC. P.O. Box 230 Valrico FL 33595 Phone No.: 813.659.9197	
Florida Board of Professional Engineers Certificate of Authorization No. 9813 <i>Wendell W. Haney</i> 1-29-07 Wendell W. Haney, P.E. No. 54158	
PRODUCT: MESKER "IMPACT" N & D PANELS	PART OR ASSEMBLY: DOOR PANEL DETAILS (N PANEL)
NO.	DATE
BY	REVISIONS
DATE: 12/13/06	
SCALE: N.T.S.	
DWG. BY: AEM	
CHK. BY: WWH	
DRAWING NO.: FL-3293	
SHEET 3 OF 11	



R:\A - Projects\Folders\Proj\_1001-1100\p1070\MESKER.dwg, F5



1 HORIZONTAL CROSS SECTION  
 5 @ LATCH  
 SHOWN WITH TEE ANCHOR  
 SEE DOOR PANEL DETAILS FOR  
 OPTIONAL PANEL TYPES



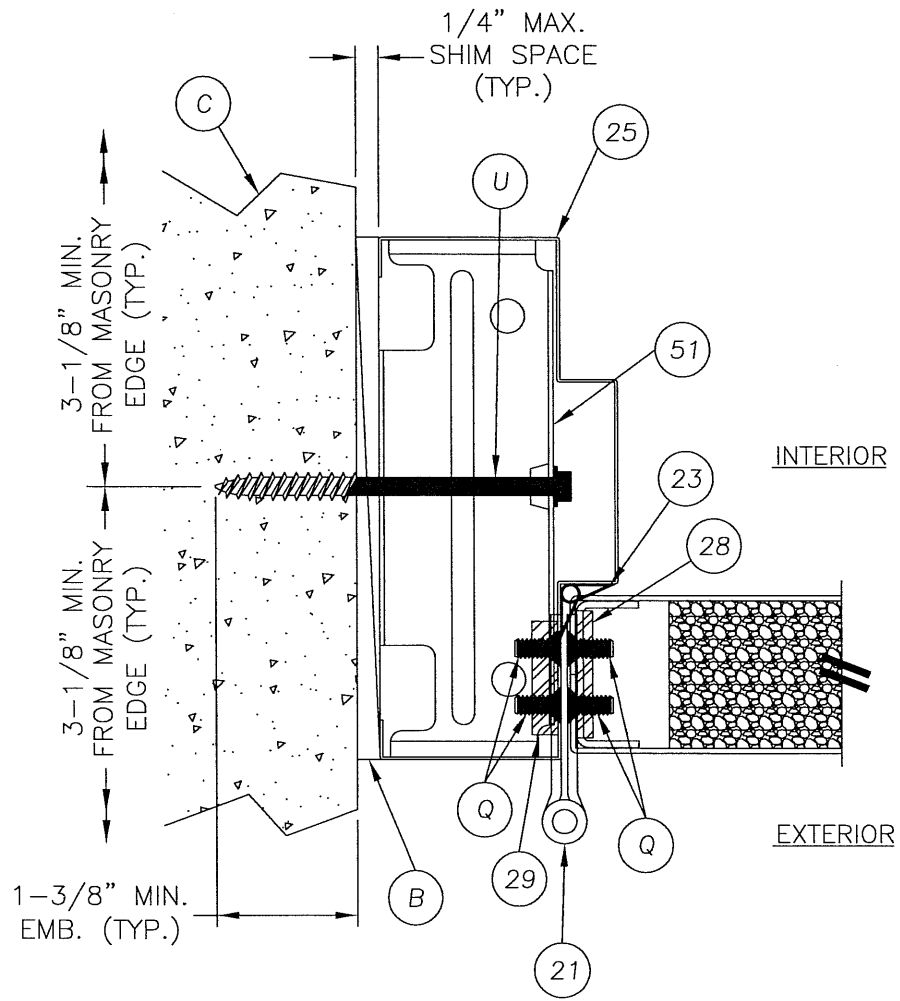
2 HORIZONTAL CROSS SECTION  
 5 @ LATCH  
 SHOWN WITH TEE ANCHOR  
 SEE DOOR PANEL DETAILS FOR  
 OPTIONAL PANEL TYPES

Documents Prepared By:  
**RW** BUILDING CONSULTANTS, INC.  
 P.O. Box 230 Vairico FL 33595  
 Phone No.: 813.659.9197  
 Florida Board of Professional Engineers  
 Certificate Of Authorization No. 9813  
*Wendell W. Haney* 1-29-07  
 Wendell W. Haney, P.E. No. 54158

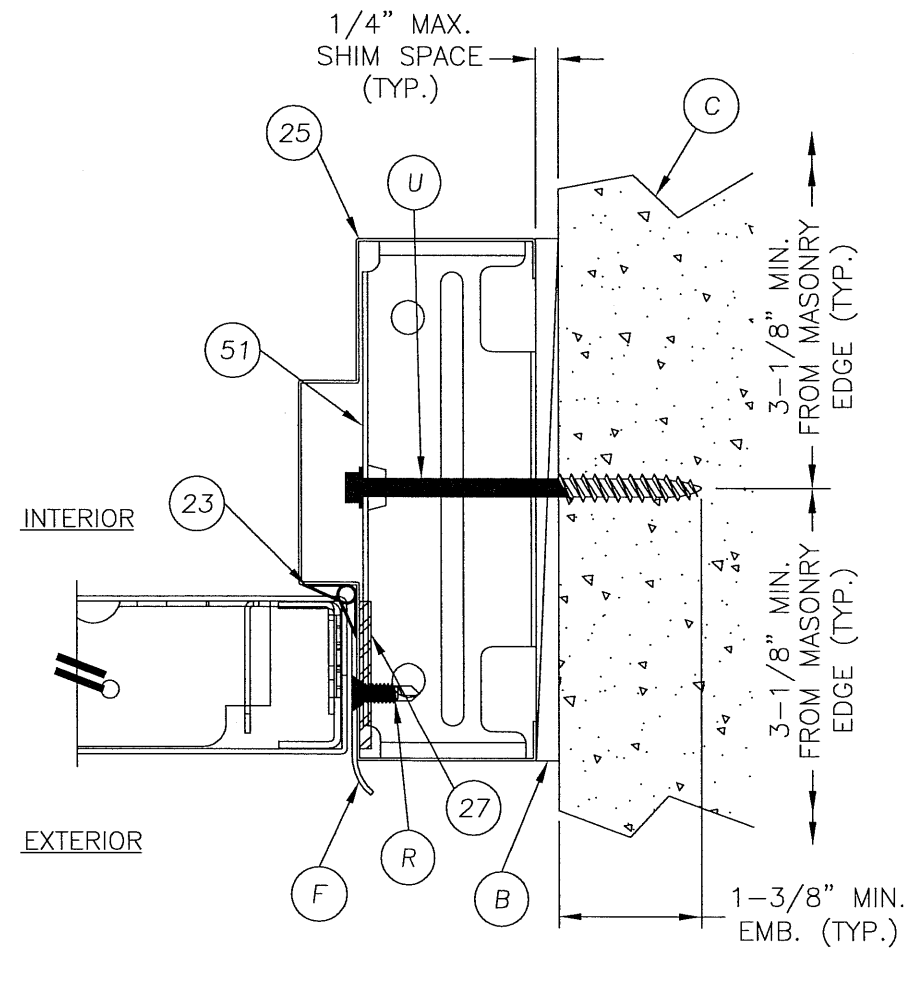
PRODUCT: MESKER "IMPACT"  
 N & D PANELS  
 PART OR ASSEMBLY:  
 HORIZONTAL CROSS SECTIONS

NO.	DATE	BY	REVISIONS

DATE: 12/13/06  
 SCALE: N.T.S.  
 DWG. BY: AEM  
 CHK. BY: WWH  
 DRAWING NO.: FL-3293  
 SHEET 5 OF 11

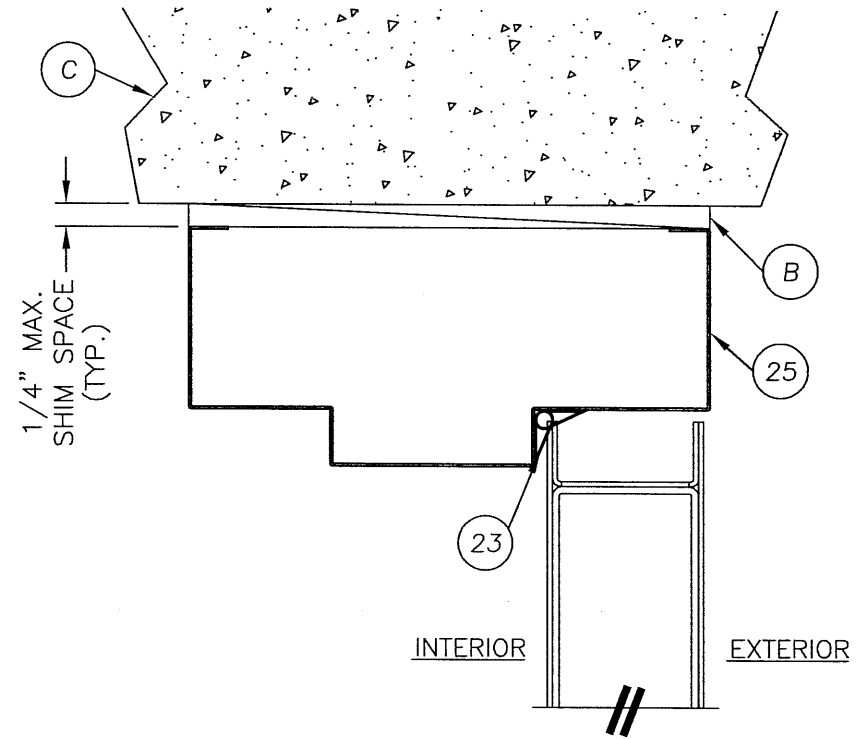


1 HORIZONTAL CROSS SECTION  
 6 @ LATCH  
 SHOWN WITH UNIVERSAL ANCHOR  
 SEE DOOR PANEL DETAILS FOR  
 OPTIONAL PANEL TYPES

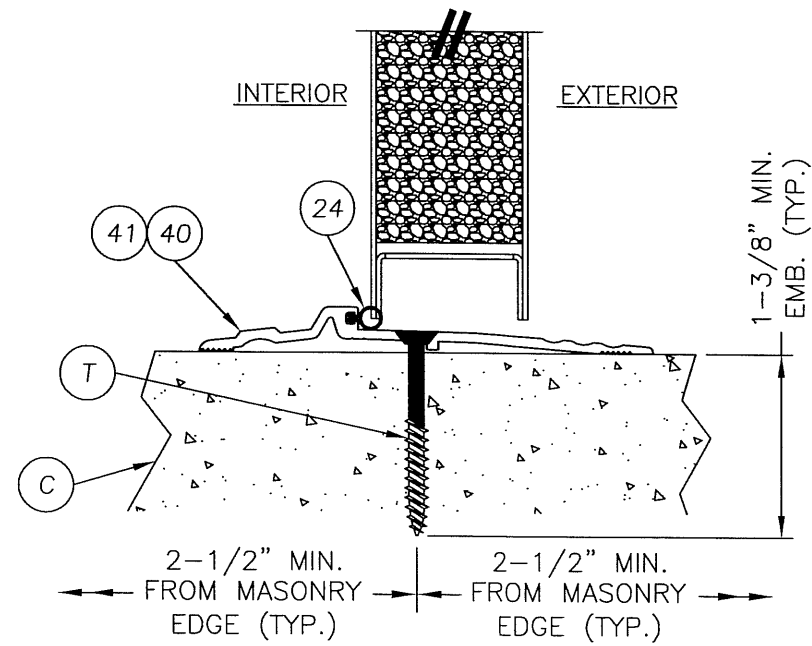


2 HORIZONTAL CROSS SECTION  
 6 @ LATCH  
 SHOWN WITH UNIVERSAL ANCHOR  
 SEE DOOR PANEL DETAILS FOR  
 OPTIONAL PANEL TYPES

Documents Prepared By: R.W. BUILDING CONSULTANTS, INC. P.O. Box 230 Valrico FL 33595 Phone No.: 813.659.9197 Florida Board of Professional Engineers Certificate Of Authorization No. 9813 Wendell W. Hagley, P.E. No. 54158	
PRODUCT:	MESKER "IMPACT" N & D PANELS
PART OR ASSEMBLY:	HORIZONTAL CROSS SECTIONS
NO.	DATE
BY	REVISIONS
DATE: 12/13/06	
SCALE: N.T.S.	
DWG. BY: AEM	
CHK. BY: WWH	
DRAWING NO.: FL-3293	
SHEET 6 OF 11	



1 VERTICAL CROSS SECTION  
 7 @ HEAD  
 SEE DOOR PANEL DETAILS FOR  
 OPTIONAL PANEL TYPES



2 VERTICAL CROSS SECTION  
 7 @ THRESHOLD  
 SEE DOOR PANEL DETAILS FOR  
 OPTIONAL PANEL TYPES

Documents Prepared By:

**RW** BUILDING CONSULTANTS, INC.  
 P.O. Box 230 Valrico FL, 33595  
 Phone No.: 813.659.9197  
 Florida Board of Professional Engineers  
 Certificate Of Authorization No. 9813  
*Wendell W. Hapley* 1-29-07  
 Wendell W. Hapley, P.E. No. 54158

PRODUCT: MESKER "IMPACT"  
 N & D PANELS

PART OR ASSEMBLY:  
 VERTICAL CROSS SECTIONS

NO.	DATE	BY	REVISIONS

DATE: 12/13/06

SCALE: N.T.S.

DWG. BY: AEM

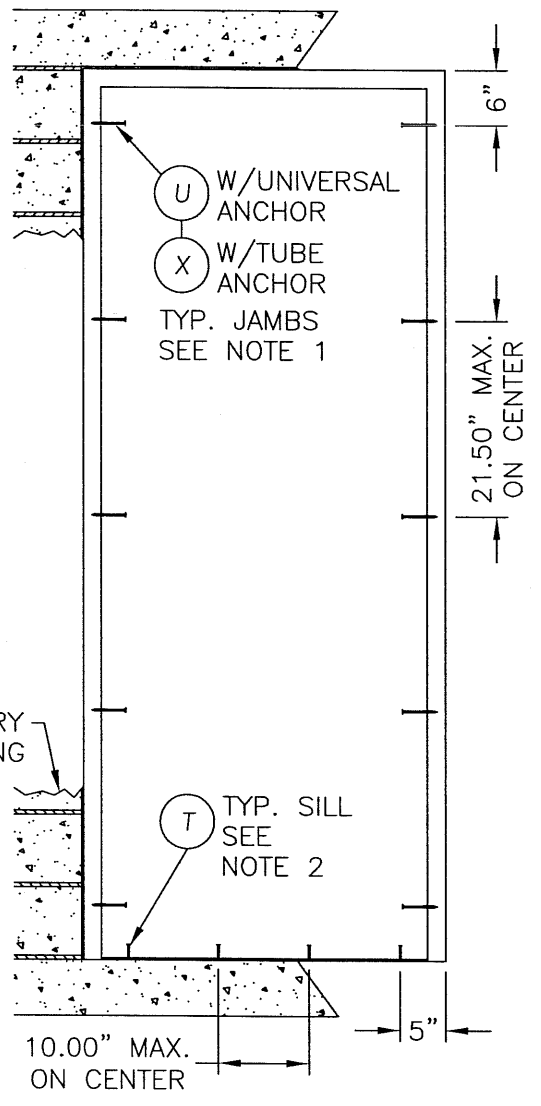
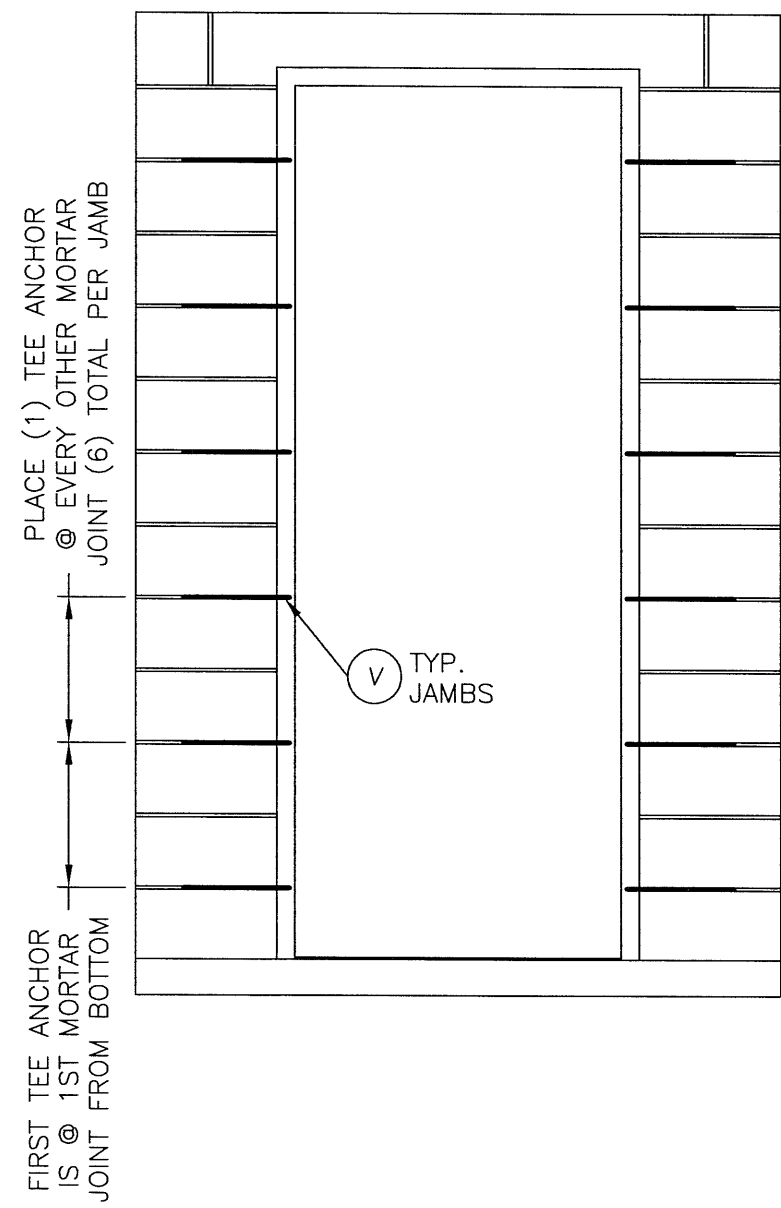
CHK. BY: WWH

DRAWING NO.:

FL-3293

SHEET 7 OF 11

R:\A - Projects\Project Folders\Proj 1001-1100\p1070\MESKER.dwg, F8



NOTES:

1. 5/16" TAPCONS REQUIRE A MINIMUM 3-1/8" CLEARANCE TO MASONRY EDGES AND A MINIMUM 3-3/4" CLEARANCE TO ADJACENT TAPCONS. UNLESS OTHERWISE NOTED BY CONCRETE SCREW MANUFACTURER.
2. 1/4" ITW CONCRETE SCREWS ANCHORING FRAME AND/OR SILL REQUIRE A MINIMUM 2-1/2" CLEARANCE TO MASONRY EDGES AND A MINIMUM 3" CLEARANCE TO ADJACENT CONCRETE SCREWS UNLESS OTHERWISE NOTED BY CONCRETE SCREW MANUFACTURER.

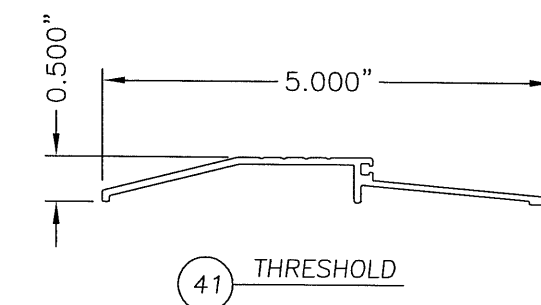
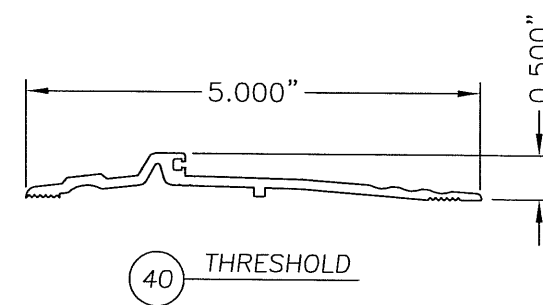
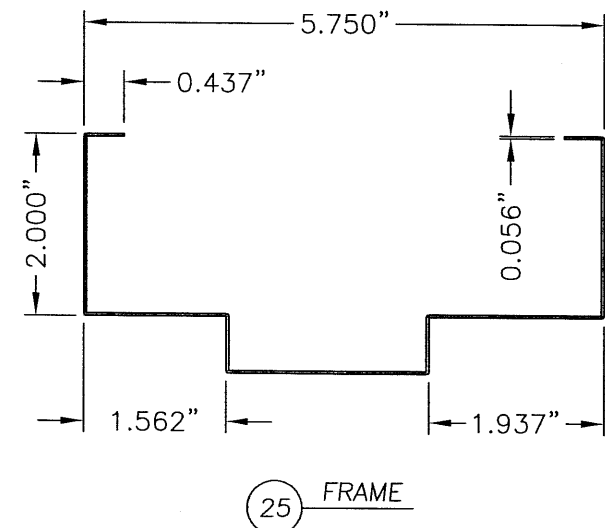
Documents Prepared By: **RW** BUILDING CONSULTANTS, INC.  
P.O. Box 230 Valrico FL 33595  
Phone No.: 813.659.9197  
Florida Board of Professional Engineers  
Certificate of Authorization No. 9813  
*Wendell W. Harney* 1-29-07  
Wendell W. Harney, P.E. No. 54158

PRODUCT:	MESKER N & D PANELS "IMPACT"	
PART OR ASSEMBLY:	ANCHORING LOCATIONS	
NO.	DATE	BY
REVISIONS		
DATE: 12/13/06		
SCALE: N.T.S.		
DWG. BY: AEM		
CHK. BY: WWH		
DRAWING NO.: FL-3293		
SHEET 8 OF 11		





BILL OF MATERIALS		
ITEM	DESCRIPTION	MATERIAL
B	1/4" MAX. SHIM SPACE	WOOD
C	MASONRY	CONCRETE
D	DESIGN HARDWARE D25 DEADBOLT	STEEL
E	DESIGN HARDWARE X82 LOCKSET ASSEMBLY	STEEL
F	LATCH STRIKE PLATE	BRASS
G	DEADBOLT STRIKE PLATE	STEEL
K	SCHLAGE LOCKSET ASSEMBLY ND53PD	STEEL
P	#8 X 3/4" PFH SCREW	STEEL
Q	#12 X 1/2" MACHINE SCREW	STEEL
R	#12 X 3/4" PFH SELF TAPPING MACHINE SCREW	STEEL
T	1/4" X 2-1/4" TAPCON	STEEL
U	5/16" X 3-3/4" H.H. TAPCON	STEEL
V	MASONRY 'TEE' ANCHOR (MESKER PFMT5)	STEEL
W	TUBE ANCHOR	STEEL
X	5/16" X 5" TAPCON	STEEL
1	DOOR STILE EDGE REINFORCEMENT (D DOOR)	STEEL
2	DOOR SKIN (.055" THK. BODY & COVER) (D DOOR)	STEEL
3	FOAM (D DOOR) 1.0 PCF MIN. DENSITY	POLYSTYRENE
4	DOOR TOP & BOTTOM CLOSER (D DOOR)	STEEL
5	LOCK BOX REINFORCEMENT	STEEL
6	CLOSER REINFORCEMENT	STEEL
11	DOOR SKIN (.055" THK. BODY & COVER) (N DOOR)	STEEL
12	FOAM (N DOOR) 1.0 PCF MIN. DENSITY	POLYSTYRENE
13	DOOR TOP & BOTTOM CLOSER (N DOOR)	STEEL
21	HINGE	STEEL
22	STD. (LONG) DOOR HINGE REIN. (TOP HINGE MESKER PDNLHR 450)	STEEL
23	WEATHERSTRIP	FOAM
24	THRESHOLD WEATHERSTRIP (NATIONAL GUARD PRODUCTS, INC. ITEM #33)	VINYL
25	FRAME 5-3/4" MIN. WITH 2" HEAD	STEEL
27	14GA. (.075") C.R.S. 161 DEADBOLT FRAME REINFORCEMENT (PFDBR4)	STEEL
28	STD. (SHORT) DOOR HINGE REIN.(MIDDLE & BOTTOM)MESKER PDNHR450)	STEEL
29	STD. 4-1/2" FRAME HINGE REINFORCEMENT 7GA.(.175" MESKER PF4HR)	STEEL
40	OUTSWING THRESHOLD NATIONAL GUARD PRODUCTS, INC. #896	ALUMINUM
41	OUTSWING THRESHOLD NATIONAL GUARD PRODUCTS, INC. #950	ALUMINUM
51	FRAME REINFORCEMENT	STEEL



Documents Prepared By: **R.W. BUILDING CONSULTANTS, INC.**  
P.O. Box 230 Valrico FL, 33595  
Phone No.: 813.659.9197  
Florida Board of Professional Engineers  
Certificate of Authorization No. 9813  
*Wendell W. Haney* 1-29-07  
Wendell W. Haney, P.E. No. 54158

PRODUCT: MESKER "IMPACT" N & D PANELS  
PART OR ASSEMBLY: BILL OF MATERIALS & COMPONENTS

NO.	DATE	BY	REVISIONS

DATE: 12/13/06  
SCALE: N.T.S.  
DWG. BY: AEM  
CHK. BY: WWH  
DRAWING NO.: FL-3293  
SHEET 11 OF 11

© 2006 R.W. BUILDING CONSULTANTS INC.

K:\A - Projects\Project Folders\Proj 1001-1100\pr1070\MESKER.dwg, F11