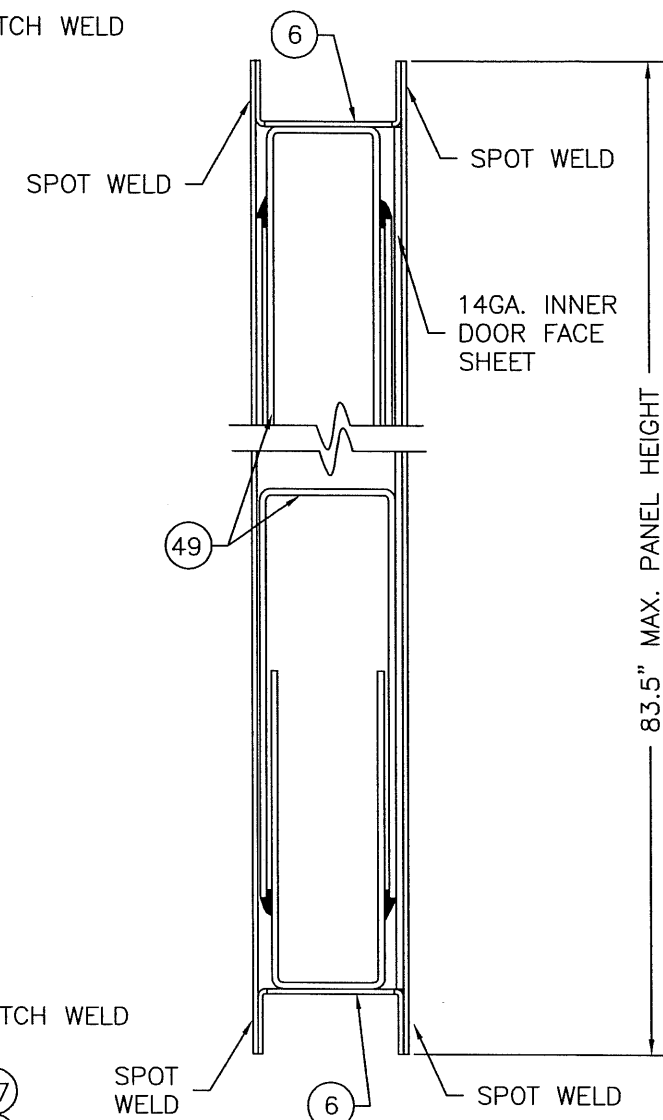


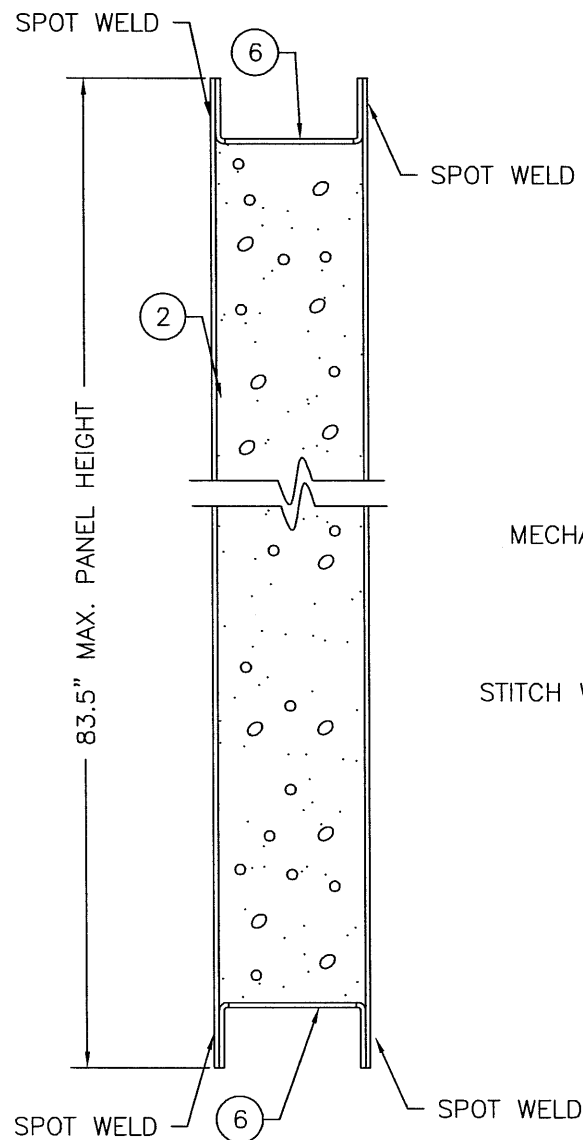
THE "HURRICANE" DOOR
HORIZONTAL CROSS SECTION

PANEL CONSTRUCTION NOTE:

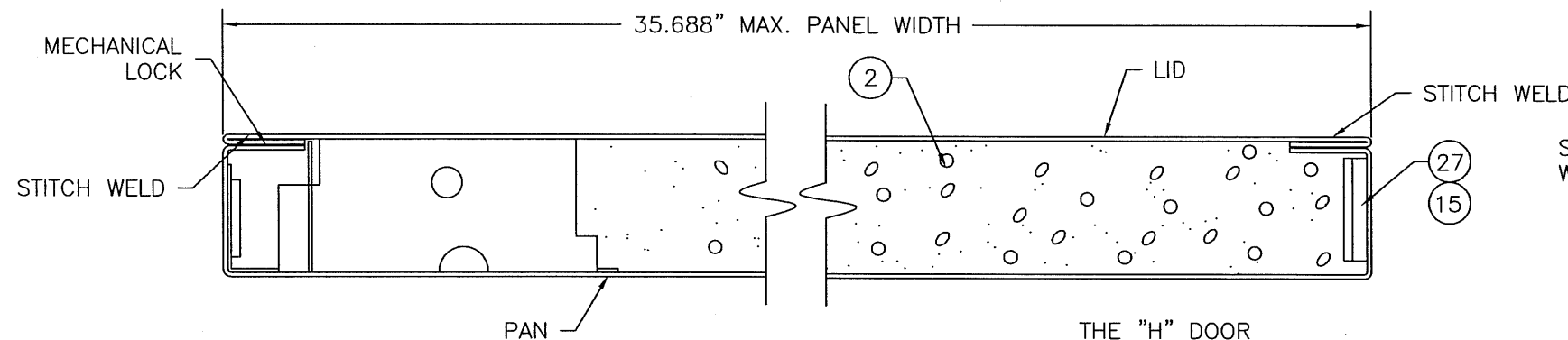
THE "HURRICANE" DOOR: THE DOOR PANEL, ITEM #32, IS CONSTRUCTED FROM (2) 16GA. (0.053" MIN.) COLD ROLLED STEEL FACE SHEETS ON THE EXTERIOR AND (1) 14GA. (0.070" MIN.) COLD ROLLED STEEL INNER DOOR FACE SHEET GLUED TO THE BACKSIDE OF THE INTERIOR 16GA. FACE SHEET. THE PANELS ARE CLOSED ON THE TOP AND BOTTOM WITH A 16GA. (0.053" MIN.) STEEL TOP AND BOTTOM CLOSER, ITEM #6. THE INTERIOR PERIMETER OF THE IS REINFORCED WITH A 2 PIECE 14GA. (0.072" MIN.) COLD ROLLED STEEL PERIMETER REINFORCEMENT, ITEM #49. THE REINFORCEMENTS AT THE TOP AND BOTTOM RUN EDGE TO EDGE AND THE SIDE REINFORCEMENTS ARE PLACED IN BETWEEN THEM. THE SIDE REINFORCEMENTS ARE THEN WELDED TO THE TOP AND BOTTOM REINFORCEMENTS. THE INTERIOR CAVITY OF THE PANEL IS FILLED WITH EXPANDED POLYSTYRENE (EPS), ITEM #2. THE PANEL FACE SHEETS ARE FLUSH WITH THE TOP AND BOTTOM CLOSER AND SPOT WELDED TO THE CLOSERS A MAXIMUM OF 3.0" ON CENTER. THE DOOR PANEL PAN HAS BLANKED HOLES EVERY 3.0" ALONG ITS RETURN LEG. THE PANEL LID HAS PUNCHED TABS EVERY 3.0" ITS RETURN LEG. THE LID IS PLACED ON THE PAN AND THE TABS ARE SLID INTO THE PUNCHED HOLES TO CREATE A MECHANICAL LOCK. THE PAN AND LID ARE THEN STITCH WELDED THE FULL LENGTH OF BOTH VERTICAL EDGES.



THE "HURRICANE" DOOR
VERTICAL CROSS SECTION



THE "H" DOOR
VERTICAL CROSS SECTION



THE "H" DOOR
HORIZONTAL CROSS SECTION

PANEL CONSTRUCTION NOTE:

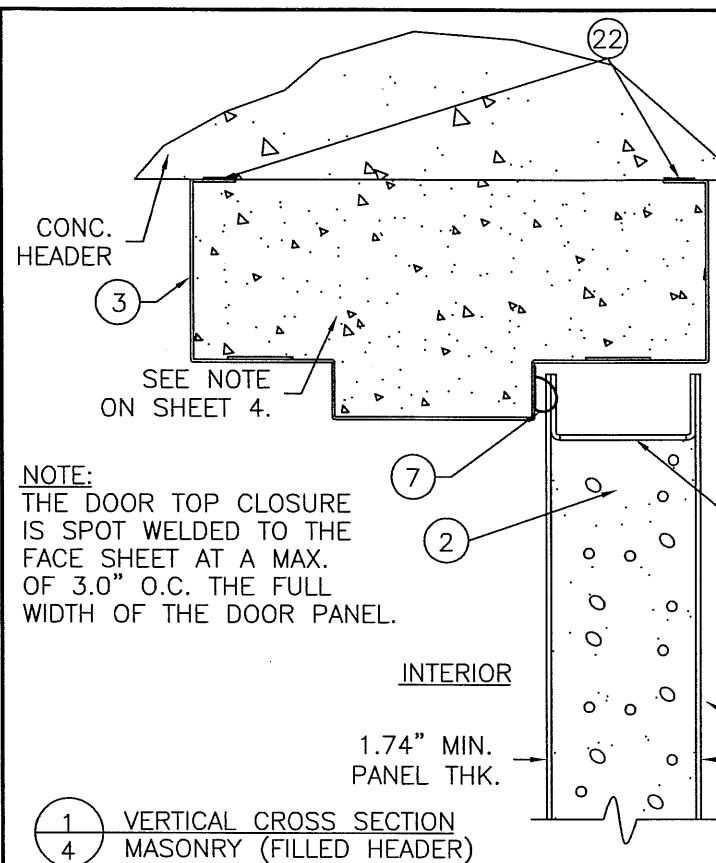
THE "H" DOOR: THE DOOR PANEL, ITEM #1, IS CONSTRUCTED FROM (2) 16GA. (0.053" MIN.) COLD ROLLED STEEL FACE SHEETS. THE PANELS ARE CLOSED ON THE TOP AND BOTTOM WITH A 16GA. (0.053" MIN.) STEEL TOP AND BOTTOM CLOSER, ITEM #6. THE INTERIOR CAVITY OF THE PANEL IS FILLED WITH EXPANDED POLYSTYRENE (EPS), ITEM #2. THE PANEL FACE SHEETS ARE FLUSH WITH THE TOP AND BOTTOM CLOSER AND SPOT WELDED TO THE CLOSERS A MAXIMUM OF 3.0" ON CENTER. THE DOOR PANEL PAN HAS BLANKED HOLES EVERY 3.0" ALONG ITS RETURN LEG. THE PANEL LID HAS PUNCHED TABS EVERY 3.0" ITS RETURN LEG. THE LID IS PLACED ON THE PAN AND THE TABS ARE SLID INTO THE PUNCHED HOLES TO CREATE A MECHANICAL LOCK. THE PAN AND LID ARE THEN STITCH WELDED THE FULL LENGTH OF BOTH VERTICAL EDGES. EACH HINGE LOCATION HAS A 7GA. (0.175" MIN.) HOT ROLLED STEEL HINGE REINFORCEMENT TO THE PANEL EDGE. THE TOP LOCATION USES ITEM #27 AND THE MIDDLE AND BOTTOM LOCATIONS USE ITEM #15.

Documents Prepared By: **RW** BUILDING CONSULTANTS, INC.
P.O. Box 230 Vairico FL 33595
Phone No.: 813.659.9197
Florida Board of Professional Engineers
Certificate of Authorization No. 9813
Wendell W. Haney, P.E. 9/12/05

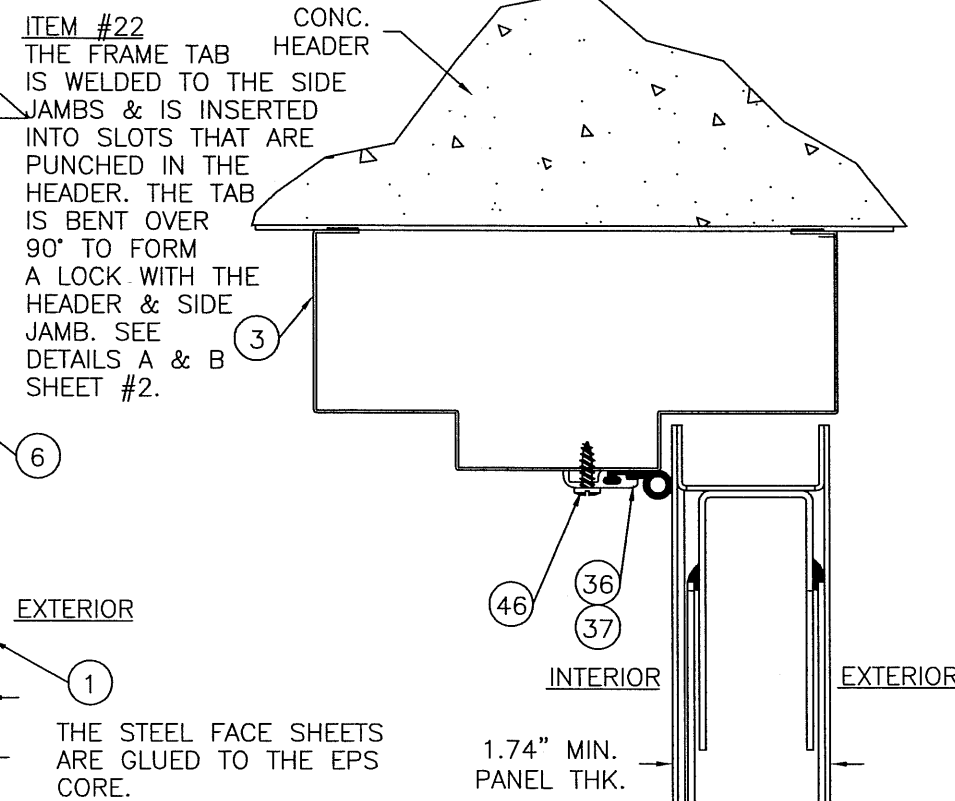
PRODUCT: MESKER 3'-0" x 7'-0" COMMERCIAL STEEL DOOR IN A H.M.F.
PART OR ASSEMBLY: DOOR PANEL CONSTRUCTION

NO.	DATE	BY	REVISIONS
1	8/03/05	EW	REVISE TO 2004 FBC

DATE: 02/22/05
SCALE: N.T.S.
DWG. BY: EW
CHK. BY: WWH
DRAWING NO.: FL-446
SHEET 3 OF 11



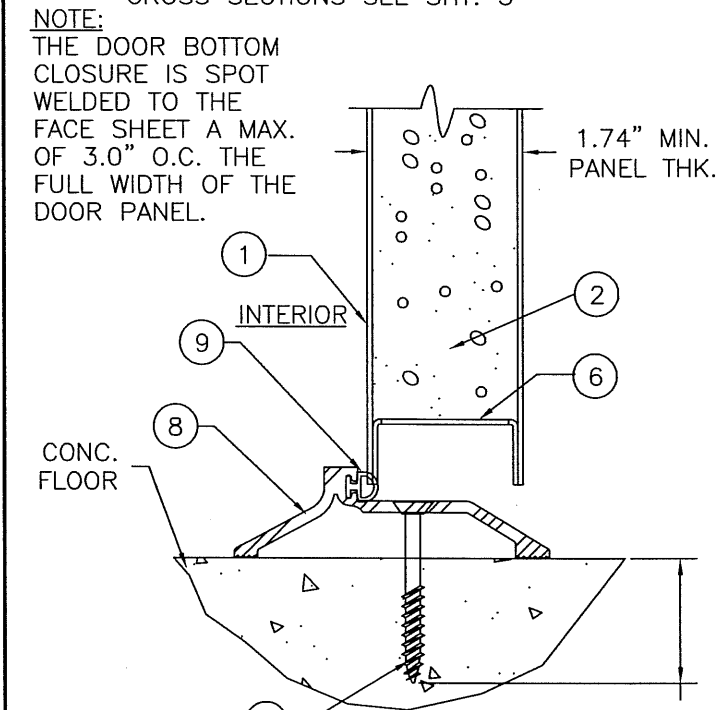
NOTE:
THE DOOR TOP CLOSURE IS SPOT WELDED TO THE FACE SHEET AT A MAX. OF 3.0" O.C. THE FULL WIDTH OF THE DOOR PANEL.



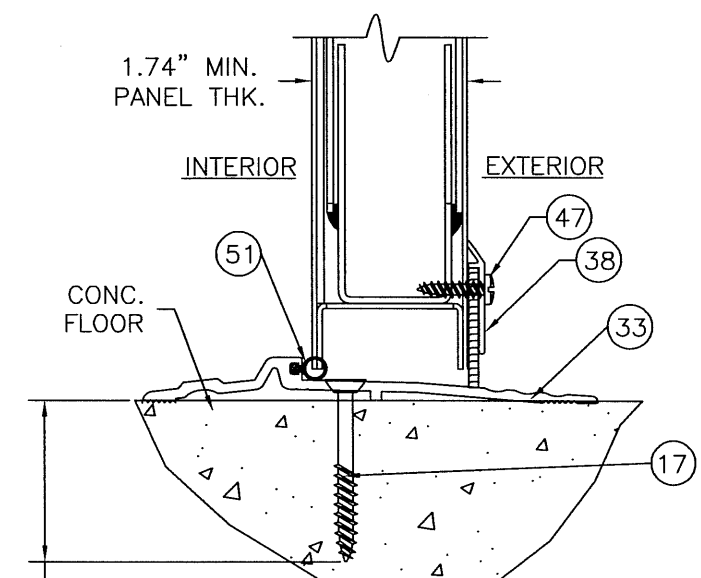
ITEM #22 THE FRAME TAB IS WELDED TO THE SIDE JAMBS & IS INSERTED INTO SLOTS THAT ARE PUNCHED IN THE HEADER. THE TAB IS BENT OVER 90° TO FORM A LOCK WITH THE HEADER & SIDE JAMB. SEE DETAILS A & B SHEET #2.

NOTE:
THE DOOR BOTTOM CLOSURE IS SPOT WELDED TO THE FACE SHEET AT A MAX. OF 3.0" O.C. THE FULL WIDTH OF THE DOOR PANEL.

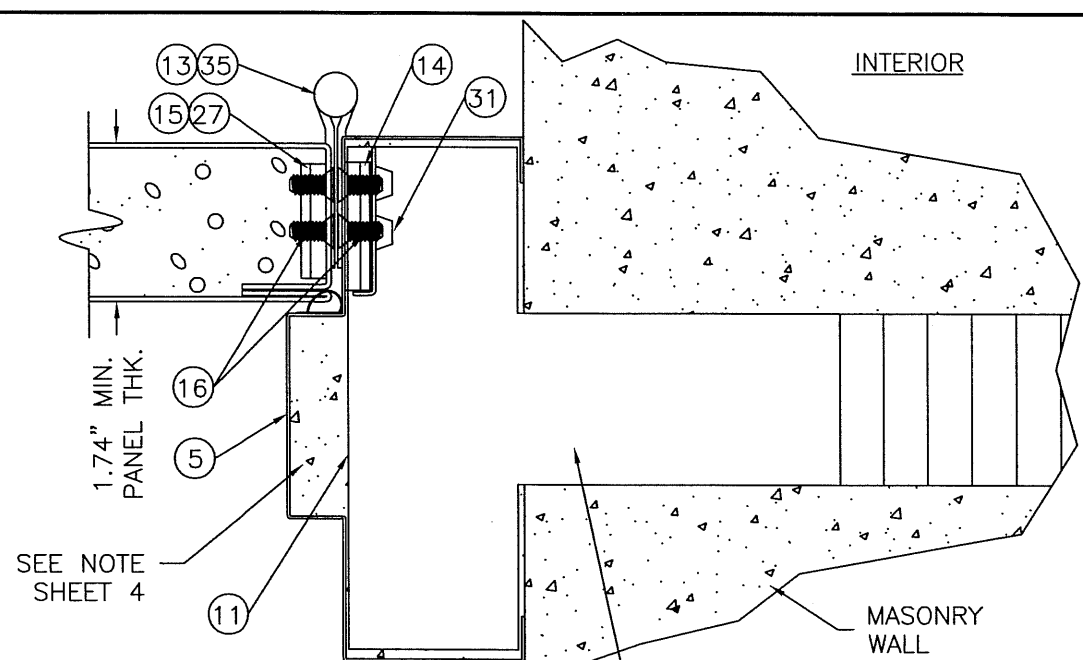
1/4 VERTICAL CROSS SECTION MASONRY (FILLED HEADER) THE "H" DOOR PANEL SHOWN FOR CLARITY OF VIEW FOR COMPLETE DOOR PANEL CROSS SECTIONS SEE SHT. 3



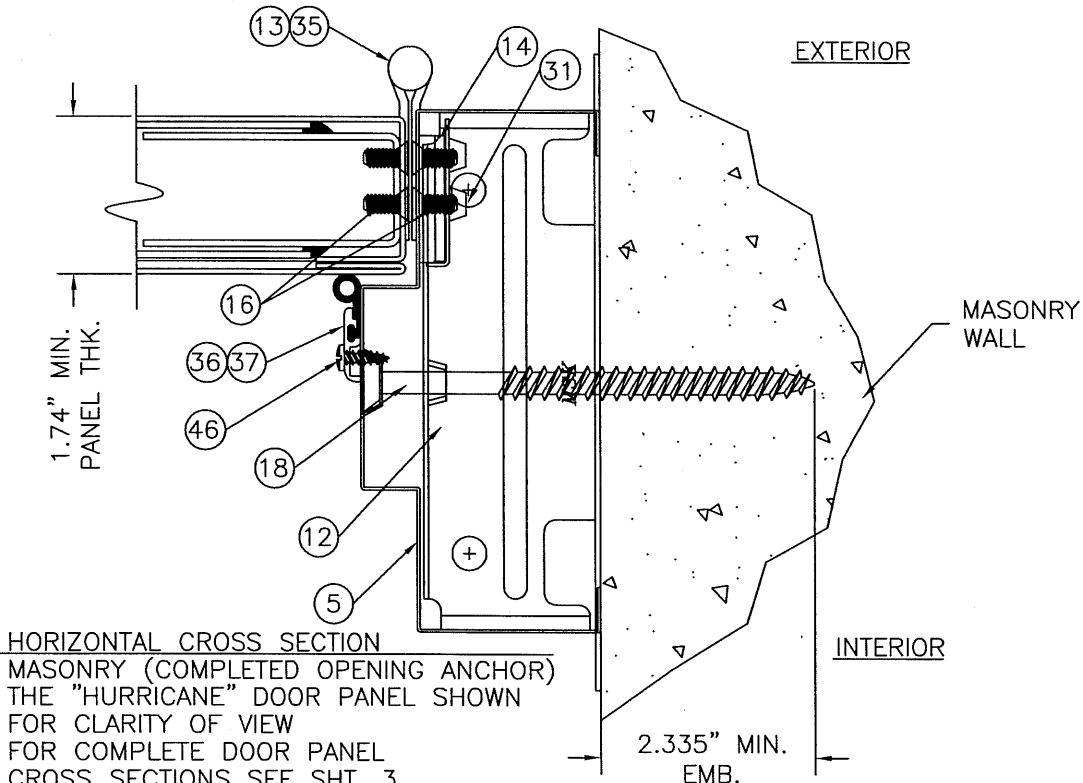
3/4 VERTICAL CROSS SECTION W/ITEMS #8 & #9 THE "H" DOOR PANEL SHOWN FOR CLARITY OF VIEW FOR COMPLETE DOOR PANEL CROSS SECTIONS SEE SHT. 3



4/4 VERTICAL CROSS SECTION W/ITEMS #33 & #51 THE "HURRICANE" DOOR PANEL SHOWN FOR CLARITY OF VIEW FOR COMPLETE DOOR PANEL CROSS SECTIONS SEE SHT. 3



5/4 HORIZONTAL CROSS SECTION MASONRY (T-ANCHOR) THE "H" DOOR PANEL SHOWN FOR CLARITY OF VIEW FOR COMPLETE DOOR PANEL CROSS SECTIONS SEE SHT. 3



6/4 HORIZONTAL CROSS SECTION MASONRY (COMPLETED OPENING ANCHOR) THE "HURRICANE" DOOR PANEL SHOWN FOR CLARITY OF VIEW FOR COMPLETE DOOR PANEL CROSS SECTIONS SEE SHT. 3

NOTE:
WHEN USING TEE ANCHORS FRAME CAVITIES ARE BACK-FILLED WITH GROUT. FOLLOW FRAME MFR'S INSTRUCTIONS FOR PREPPING THE CAVITY TO RESIST CORROSION BEFORE GROUTING.

Documents Prepared By:
RW BUILDING CONSULTANTS, INC.
P.O. Box 230 Valrico FL 33595
Phone No.: 813.659.9197
Florida Board of Professional Engineers
Certificate Of Authorization No. 9813
Wendell W. Hedney, P.E. No. 54158

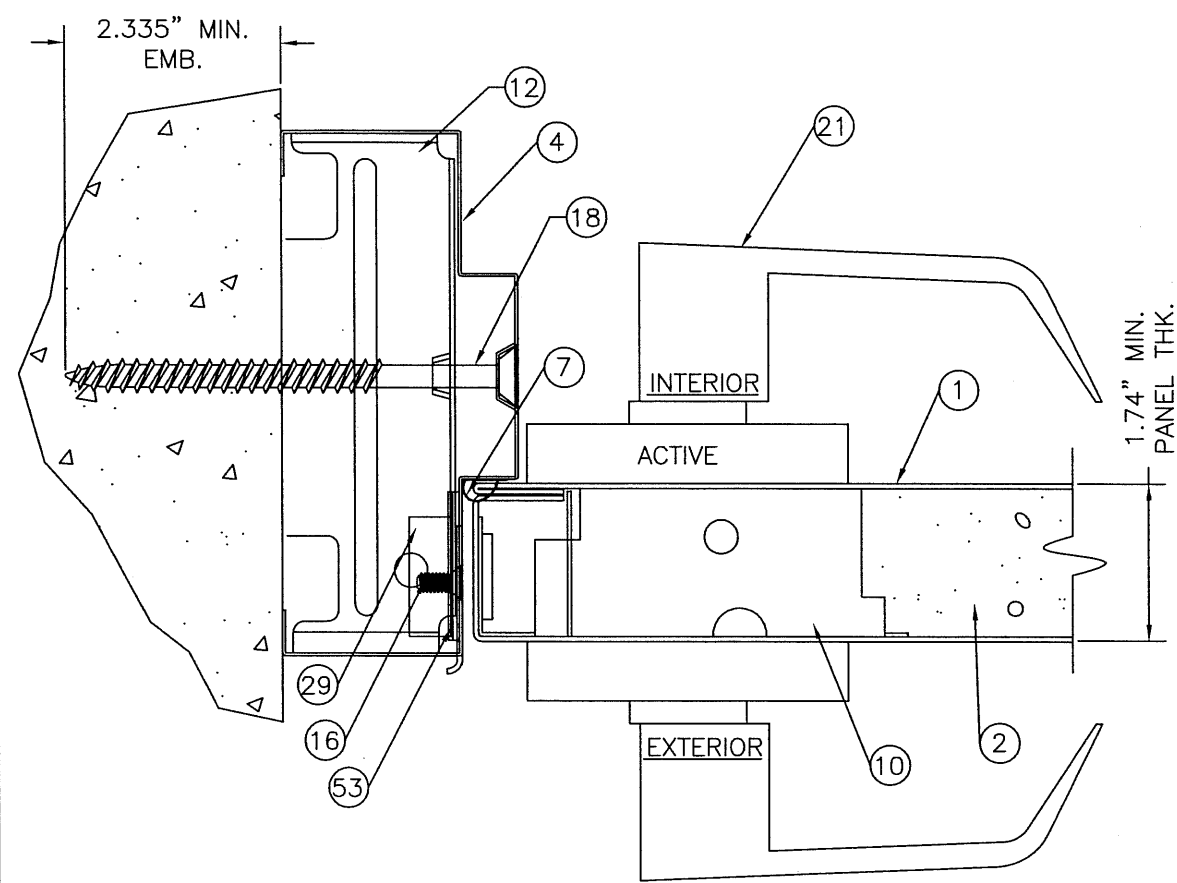
PRODUCT:
MESKER
3'-0" x 7'-0" COMMERCIAL
STEEL DOOR IN A H.M.F.
PART OR ASSEMBLY:
VERTICAL & HORIZONTAL
CROSS SECTIONS

NO.	DATE	REVISIONS
1	8/03/05	REVISE TO 2004 FBC
		EW BY

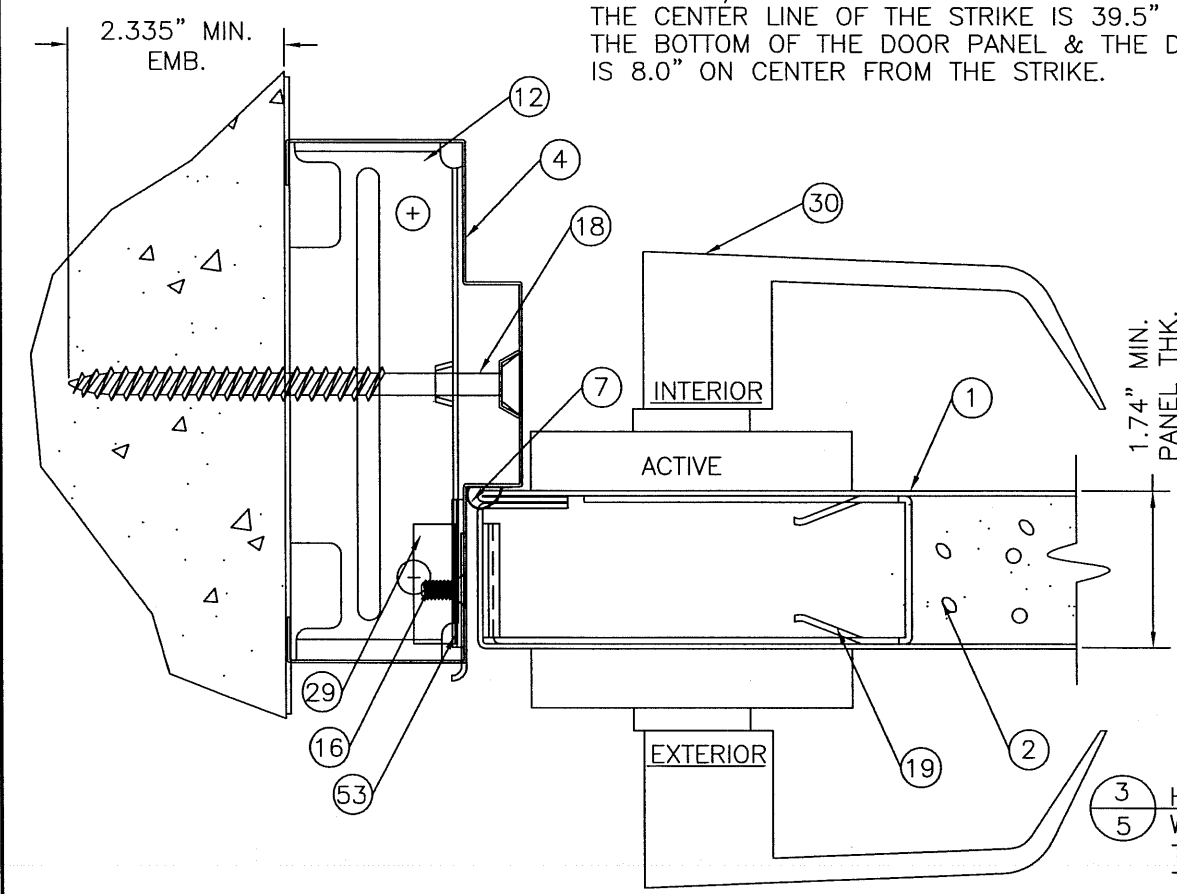
DATE: 02/22/05
SCALE: N.T.S.
DWG. BY: EW
CHK. BY: WWH
DRAWING NO.: FL-446
SHEET 4 OF 11

R:\PROJ 500 - 650\PF75\FL-446-REV\FL-446-4-RI.DWG

R:\Proj 500 - 650\PF575\FL-446-REV\FL-446-5-RI.DWG

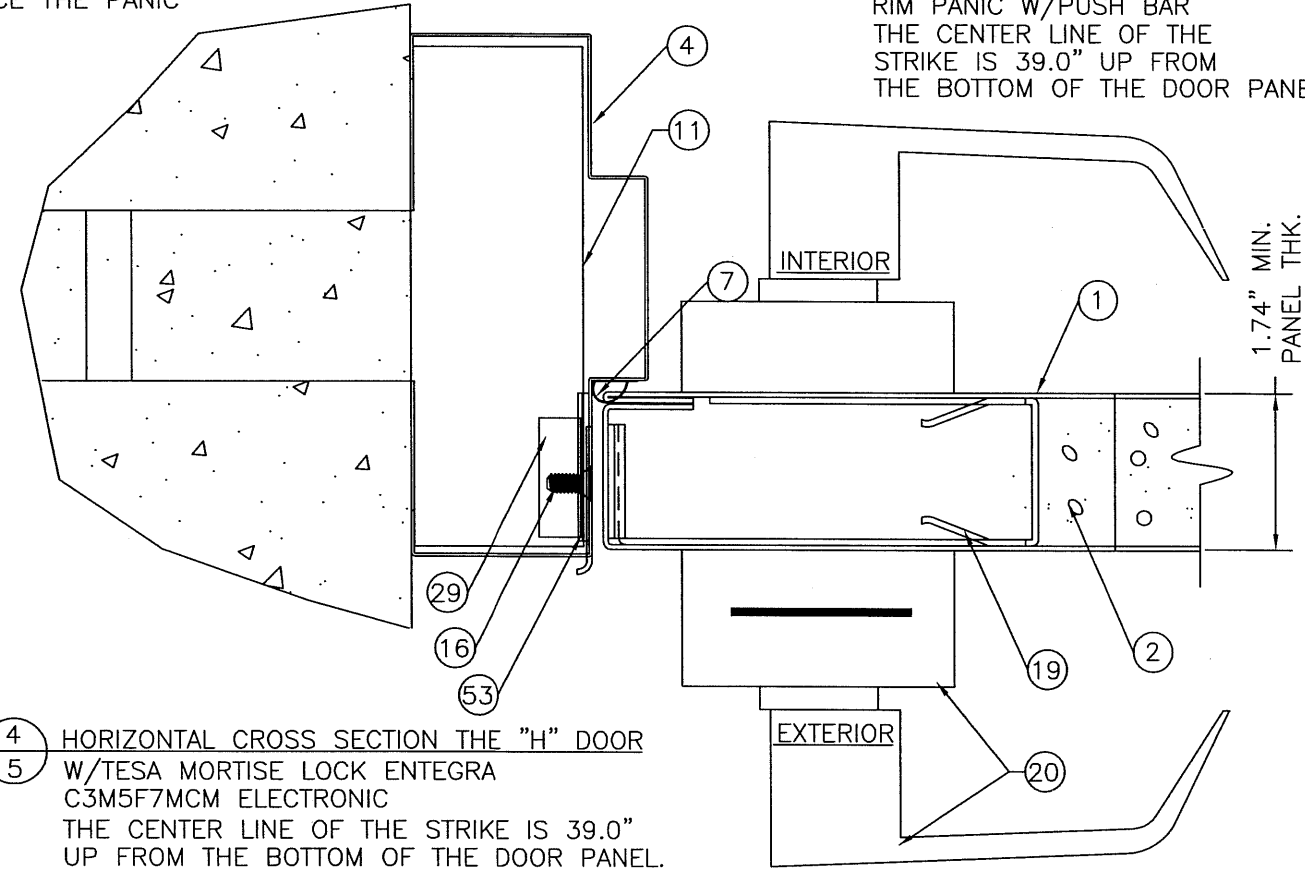


1 HORIZONTAL CROSS SECTION THE "H" DOOR
5 W/CORBIN/RUSSWIN CL3300 LEVER LOCKSET & CORBIN/RUSSWIN DL3000 CYLINDRICAL DEAD LOCK THE CENTER LINE OF THE STRIKE IS 39.5" UP FROM THE BOTTOM OF THE DOOR PANEL & THE DEAD LOCK IS 8.0" ON CENTER FROM THE STRIKE.

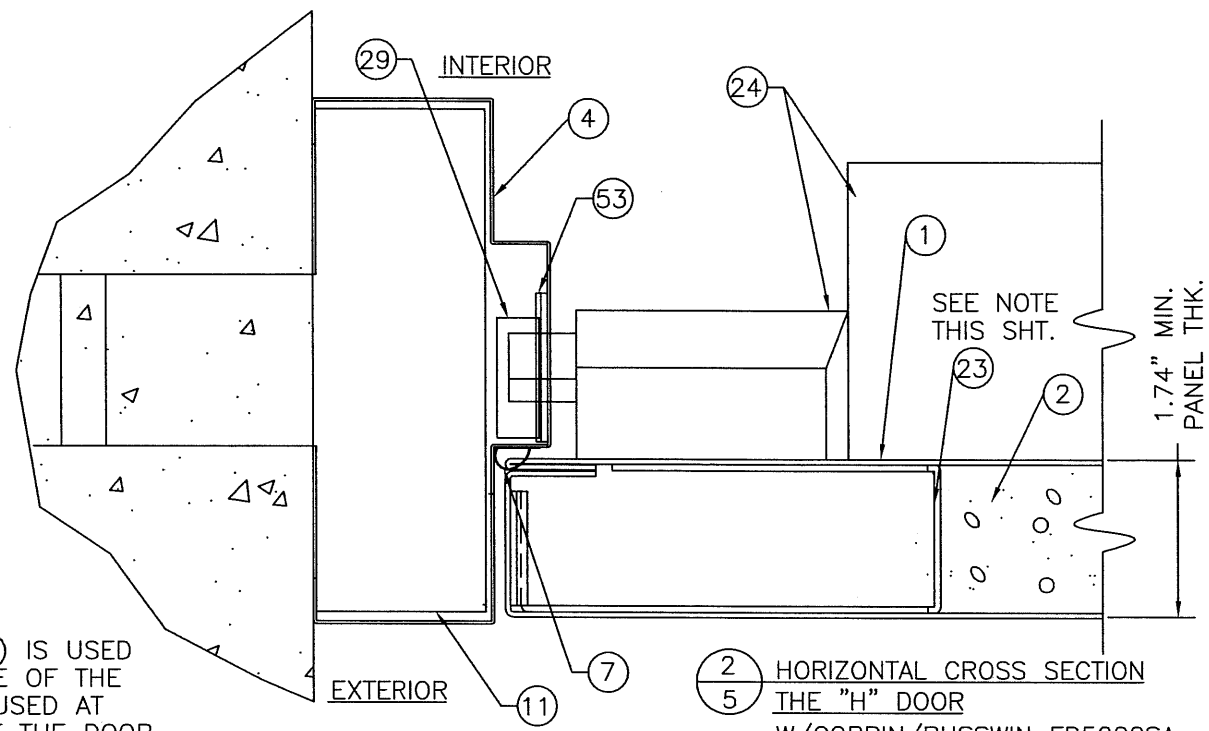


3 HORIZONTAL CROSS SECTION THE "H" DOOR
5 W/CORBIN/RUSSWIN ML2000 MORTISE W/ LEVER HANDLE THE CENTER LINE OF THE STRIKE IS 39.0" UP FROM THE BOTTOM OF THE DOOR PANEL.

NOTE: ITEM #23 (1) IS USED AT THE STRIKE SIDE OF THE DOOR AND (1) IS USED AT THE HINGE SIDE OF THE DOOR TO REINFORCE THE PANIC PUSH BAR.



4 HORIZONTAL CROSS SECTION THE "H" DOOR
5 W/TESA MORTISE LOCK ENTEGRA C3M5F7MCM ELECTRONIC THE CENTER LINE OF THE STRIKE IS 39.0" UP FROM THE BOTTOM OF THE DOOR PANEL.



2 HORIZONTAL CROSS SECTION THE "H" DOOR
5 W/CORBIN/RUSSWIN ED5200SA RIM PANIC W/PUSH BAR THE CENTER LINE OF THE STRIKE IS 39.0" UP FROM THE BOTTOM OF THE DOOR PANEL.

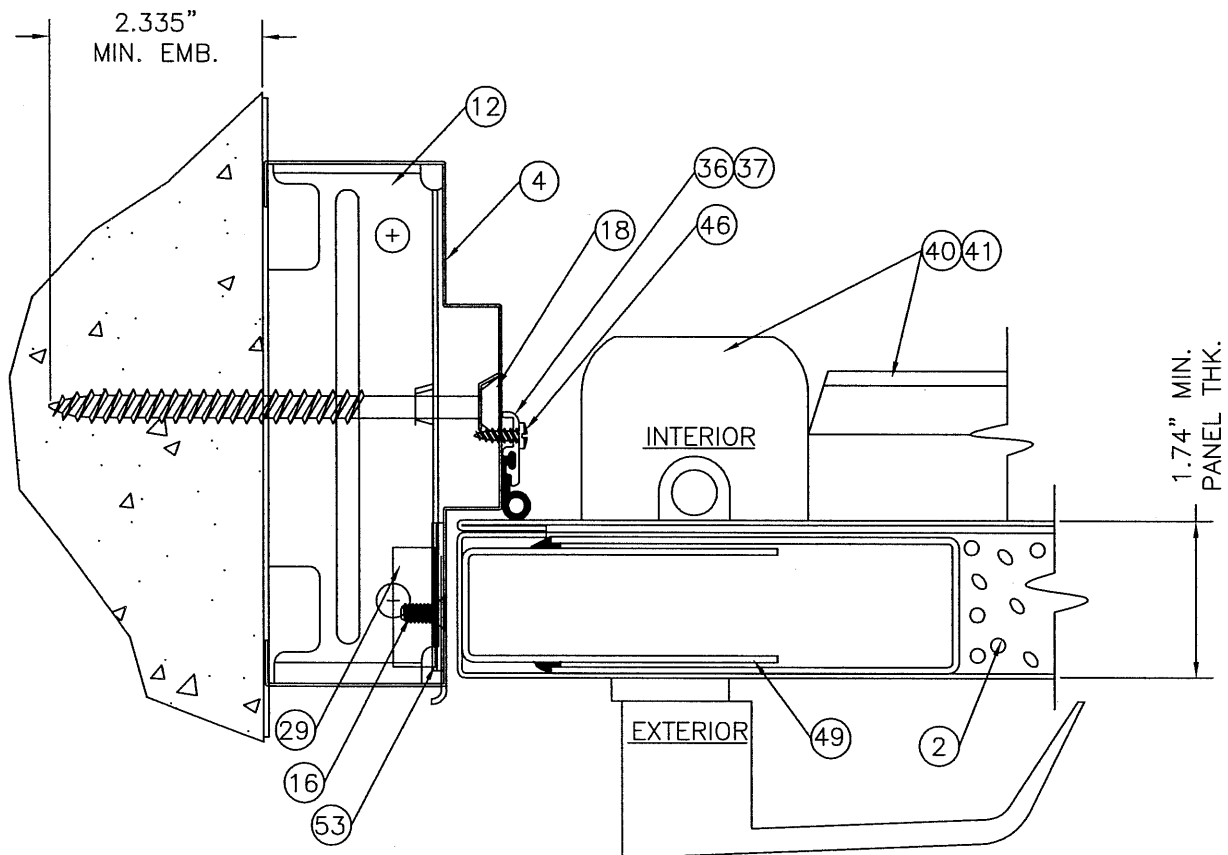
Documents Prepared By: *RW* BUILDING CONSULTANTS, INC.
P.O. Box 230 Valrico FL 33595
Phone No.: 813.659.9197
Florida Board of Professional Engineers
Certificate Of Authorization No. 9813
Wendell W. Haney P.E. No. 54158

PRODUCT: MESKER 3'-0" x 7'-0" COMMERCIAL STEEL DOOR IN A H.M.F.
PART OR ASSEMBLY: HORIZ. CROSS SECTION WITH C/RUSSWIN & TESA HARDWARE

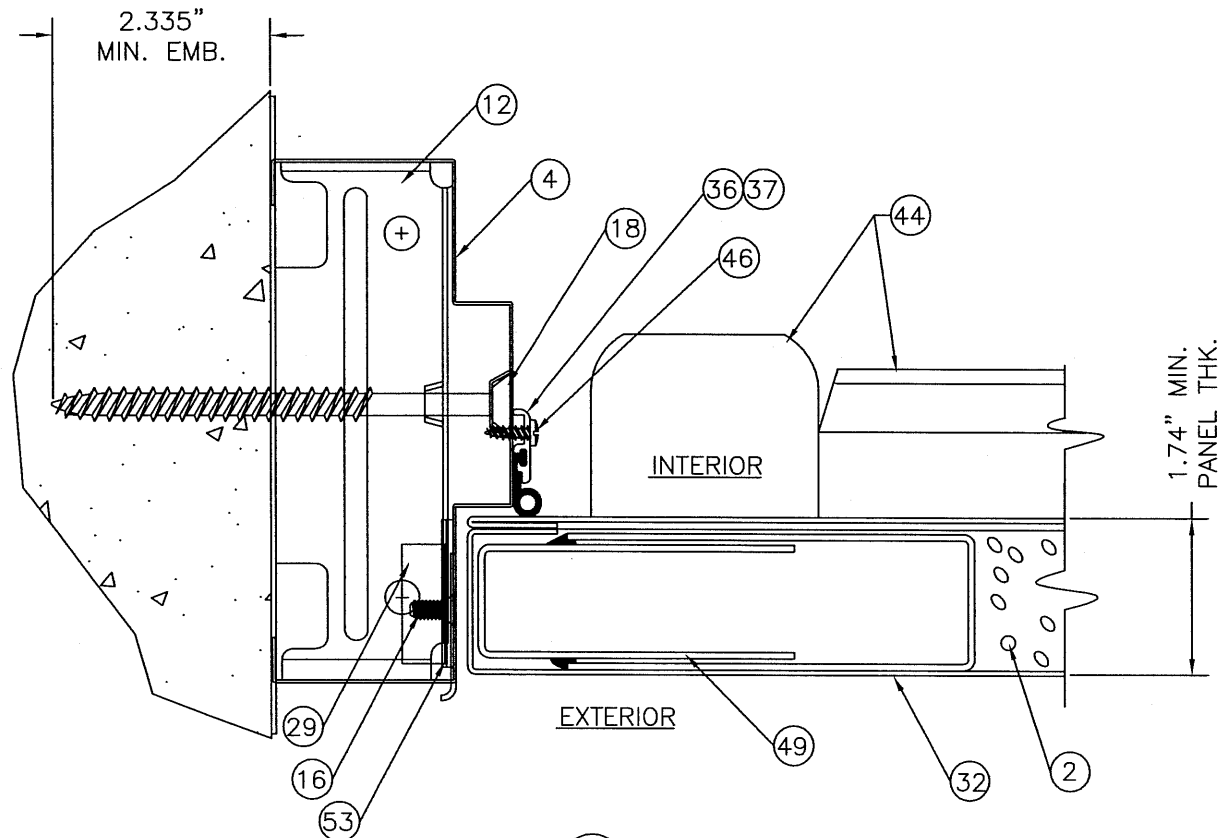
NO.	DATE	EW	BY
1	8/03/05	REVISE TO 2004 FBC	

REVISIONS

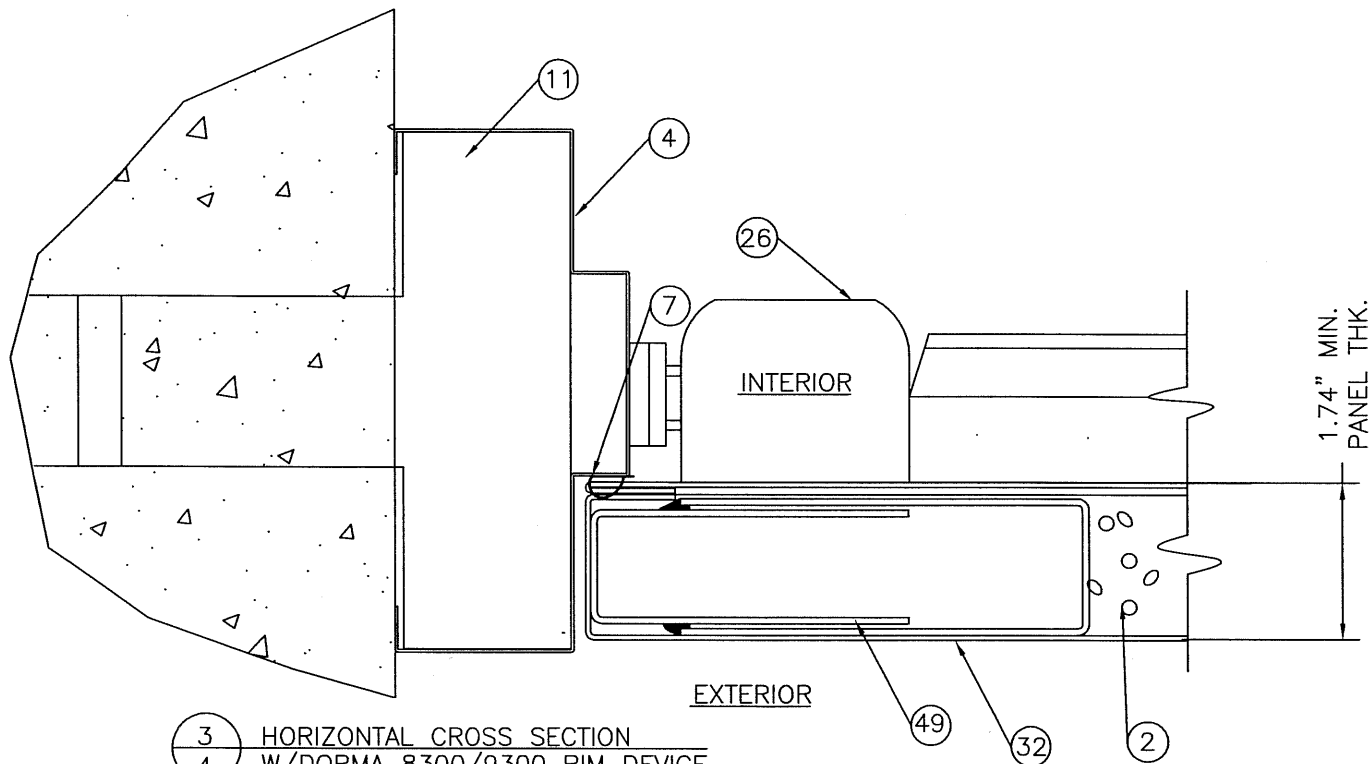
DATE: 02/22/05
SCALE: N.T.S.
DWG. BY: EW
CHK. BY: WWH
DRAWING NO.: FL-446
SHEET 5 OF 11



1 HORIZONTAL CROSS SECTION
 6 W/DORMA 9400/8400 VERTICAL RODS
 THE CENTER LINE OF THE STRIKE IS
 40.0" UP FROM THE BOTTOM OF THE DOOR PANEL.



3 HORIZONTAL CROSS SECTION
 6 W/DORMA 9500 MORTISE W/PUSH BAR
 THE CENTER LINE OF THE STRIKE IS
 40.0" UP FROM THE BOTTOM OF THE DOOR PANEL.



3 HORIZONTAL CROSS SECTION
 4 W/DORMA 8300/9300 RIM DEVICE
 THE CENTER LINE OF THE STRIKE IS
 40.0" UP FROM THE BOTTOM OF THE DOOR PANEL.

Documents Prepared By:

RW BUILDING CONSULTANTS, INC.
 P.O. Box 230 Valrico FL 33595
 Phone No.: 813.659.9197
 Florida Board of Professional Engineers
 Certificate Of Authorization No. 9813
 Wendell W. Haney, P.E. Reg. 9/12/05
 Wendell W. Haney, P.E. Reg. 54158

PRODUCT:
 MESKER
 3'-0" x 7'-0" COMMERCIAL
 STEEL DOOR IN A H.M.F.

PART OR ASSEMBLY:
 HORIZONTAL CROSS SECTIONS
 WITH DORMA HARDWARE

NO.	DATE	REVISIONS
1	8/03/05	REVISE TO 2004 FBC
		EW
		BY

DATE: 02/22/05

SCALE: N.T.S.

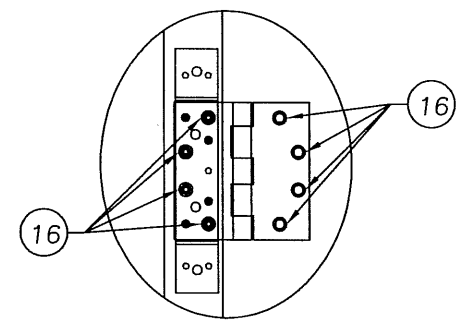
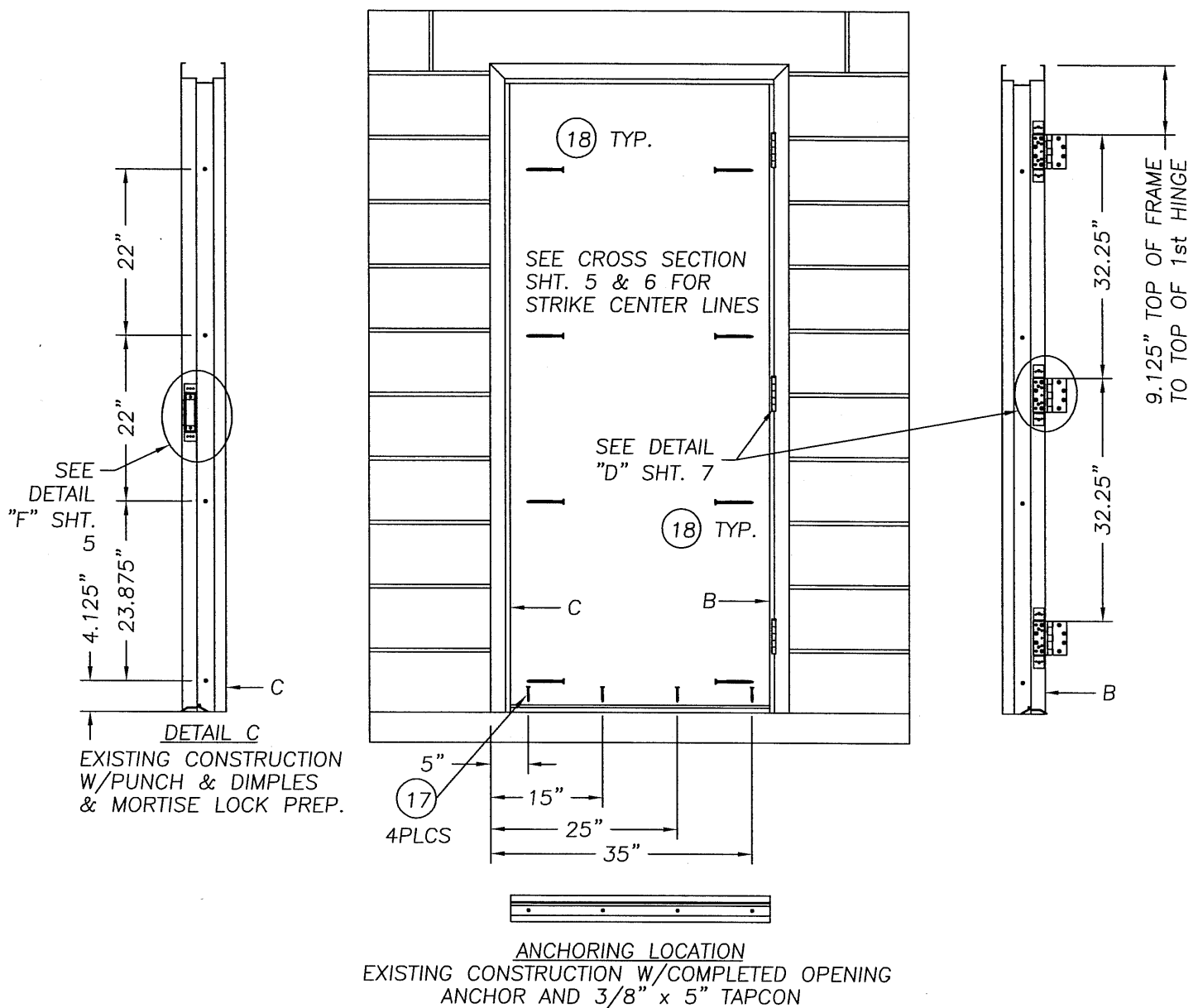
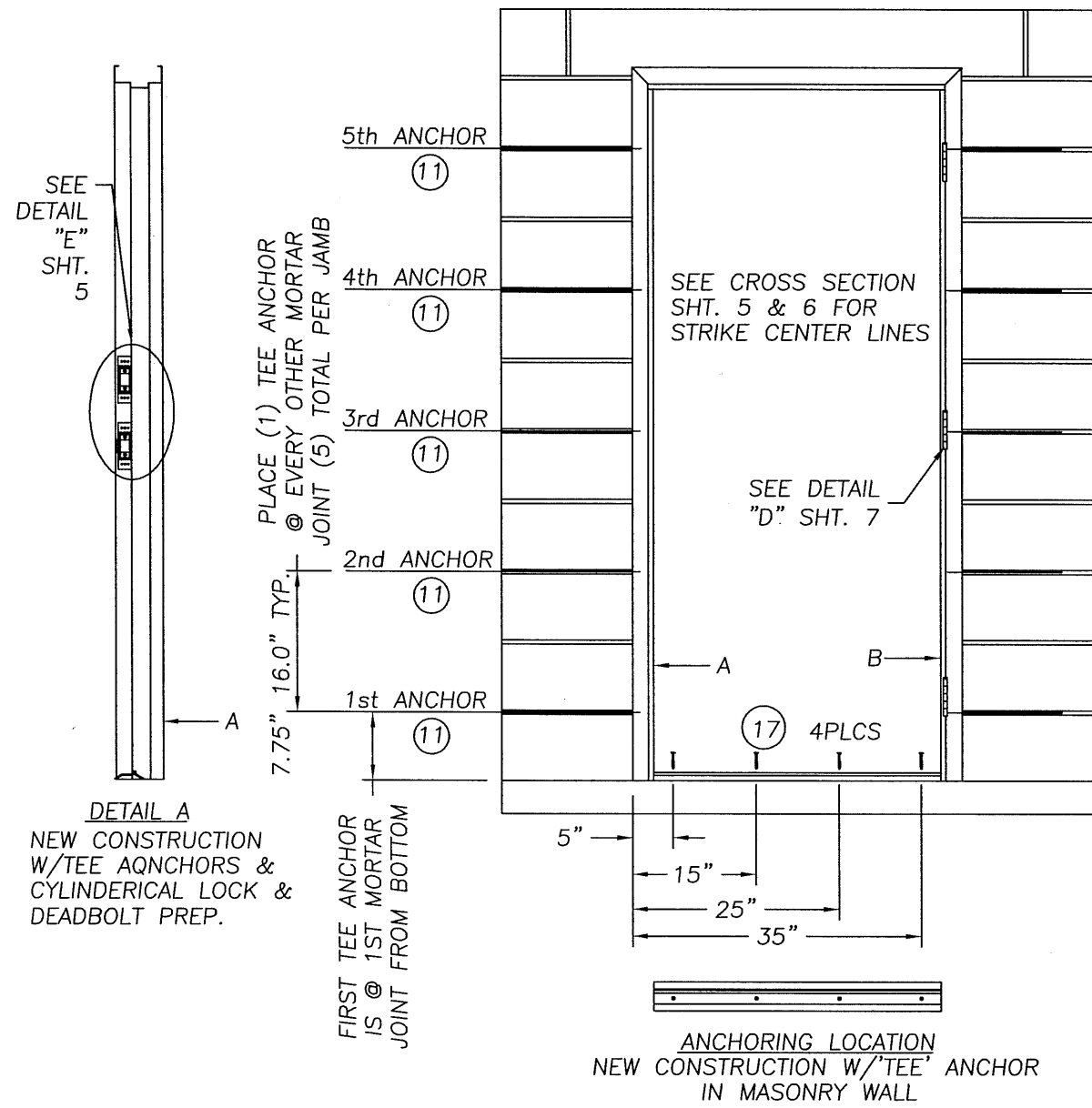
DWG. BY: EW

CHK. BY: WWH

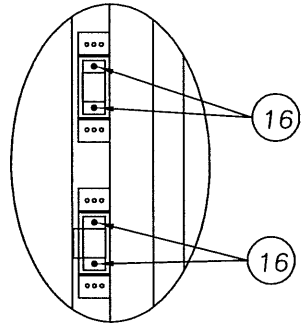
DRAWING NO.:
 FL-446

SHEET 6 OF 11

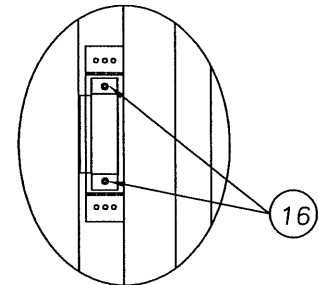
R:\Proj 500 - 650\PF575\FL-446-REV\FL-446-7-RI.DWG



DETAIL "D" TYP. HINGE DETAIL



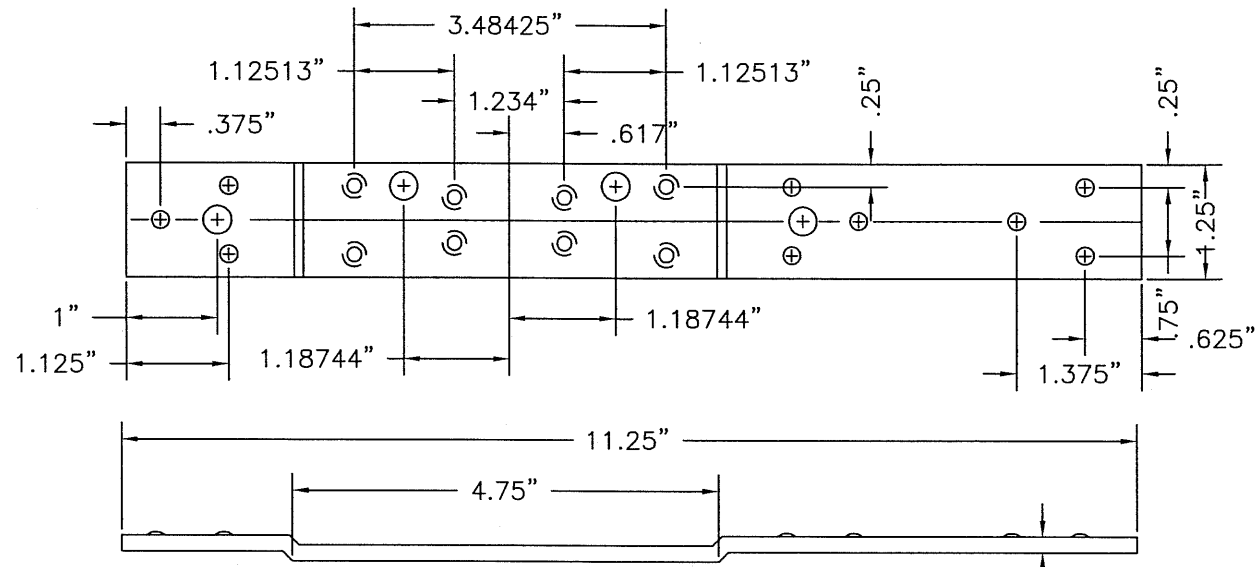
DETAIL "E" TYP. CYLINDRICAL LOCK DEADBOLT PREP.



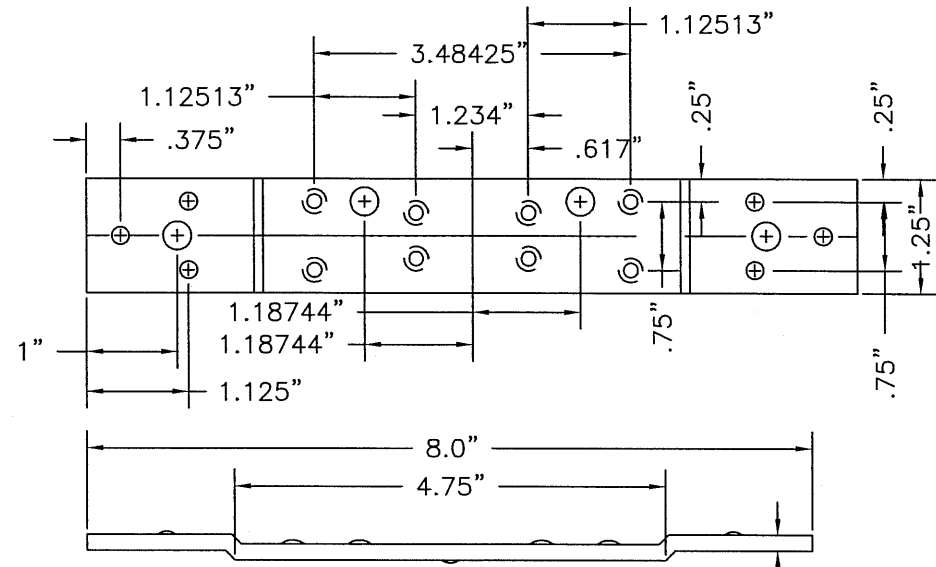
DETAIL "F" TYP. MORTISE LOCK PREP.

Documents Prepared By:		BUILDING CONSULTANTS, INC. P.O. Box 230 Valrico FL 33595 Phone No.: 813.659.9197	
PRODUCT:		MESKER 3'-0" x 7'-0" COMMERCIAL STEEL DOOR IN A H.M.F.	
PART OR ASSEMBLY:		ANCHORING LOCATIONS AND DETAILS	
NO.	DATE	EW	BY
1	8/03/05	REVISE TO 2004 FBC	
REVISIONS			
DATE: 02/22/05			
SCALE: N.T.S.			
DWG. BY: EW			
CHK. BY: WWH			
DRAWING NO.: FL-446			
SHEET 7 OF 11			

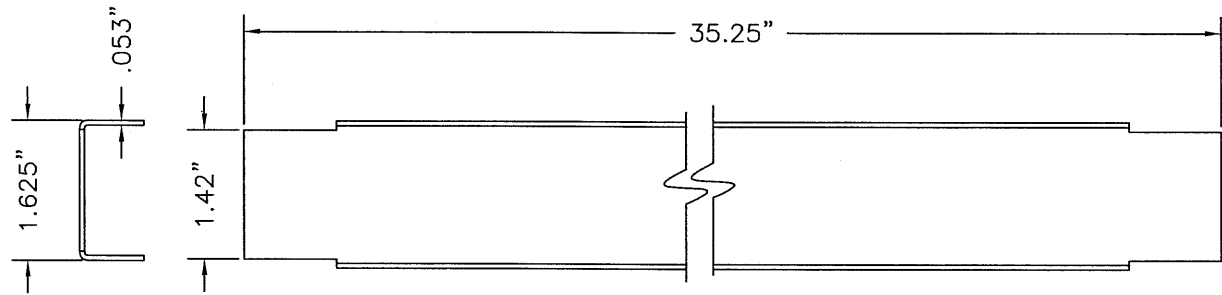
Florida Board of Professional Engineers
Certificate of Authorization No. 9813
Wendell W. Haney, P.E. No. 54158



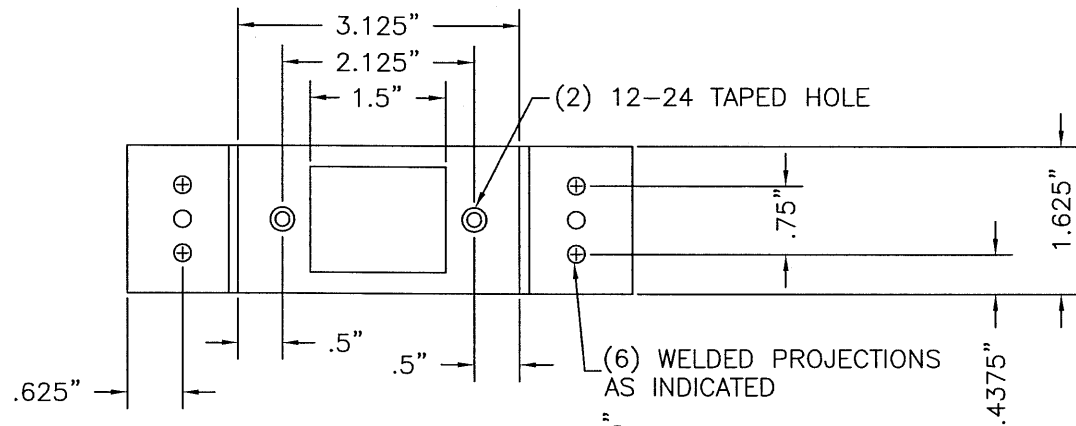
STD. (LONG) DOOR HINGE REIN. (27)
11.0" x 1.25" x .175" (7GA. H.R.S.)
BY MESKER



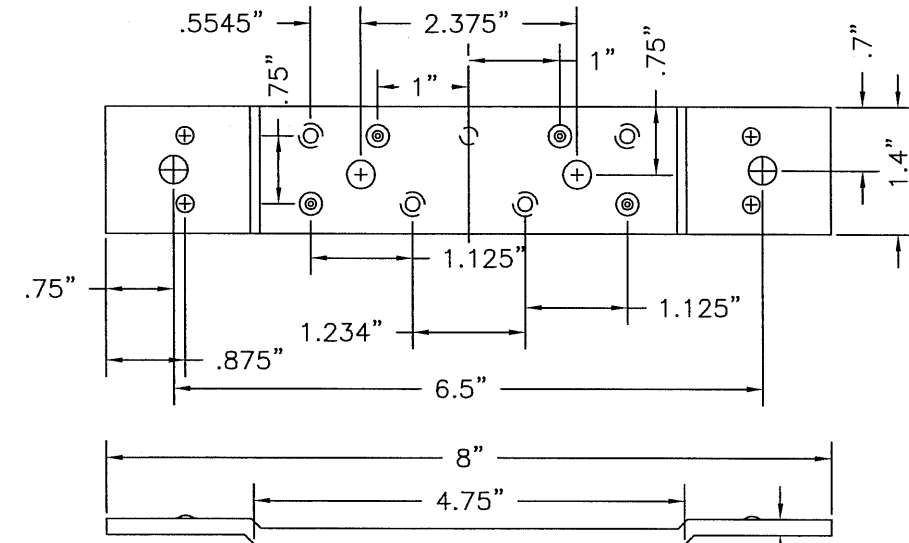
STD. 4 1/2" FRAME HINGE REIN. (14)
8.0" x 1.25" x .175" (7GA. H.R.S.)
BY MESKER



DOOR TOP & BOTTOM CLOSER (6)
16GA. (.053") C.R.S.
BY MESKER



DEADBOLT FRAME REINFORCEMENT (52)
14GA. (0.075") C.R.S. (PFDBR4)
BY MESKER



STD. (SHORT) DOOR HINGE REIN. (15)
8.0" x 1.4" x .175" (7GA. H.R.S.)
BY MESKER

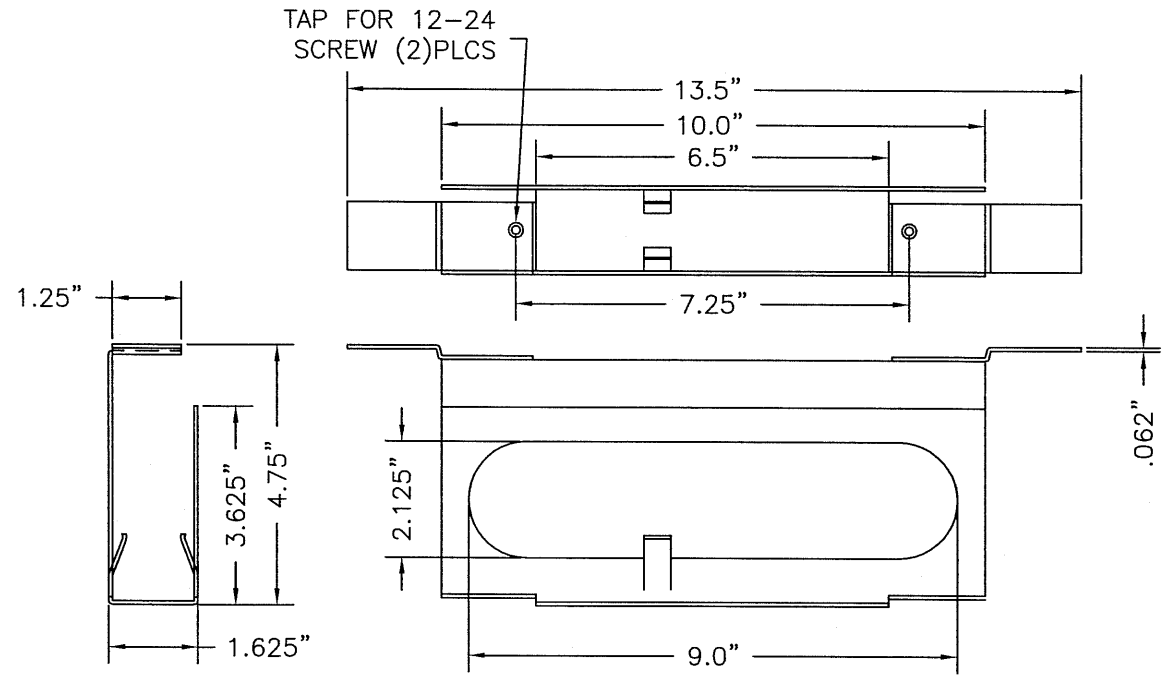
Documents Prepared By:
RW BUILDING CONSULTANTS, INC.
P.O. Box 230 Valrico FL 33595
Phone No.: 813.659.9197
Florida Board of Professional Engineers
Certificate Of Authorization No. 9813
Wendell W. Horley
Wendell W. Horley, P.E. No. 54158

PRODUCT: MESKER
3'-0" x 7'-0" COMMERCIAL
STEEL DOOR IN A H.M.F.
PART OR ASSEMBLY:
UNIT COMPONENTS

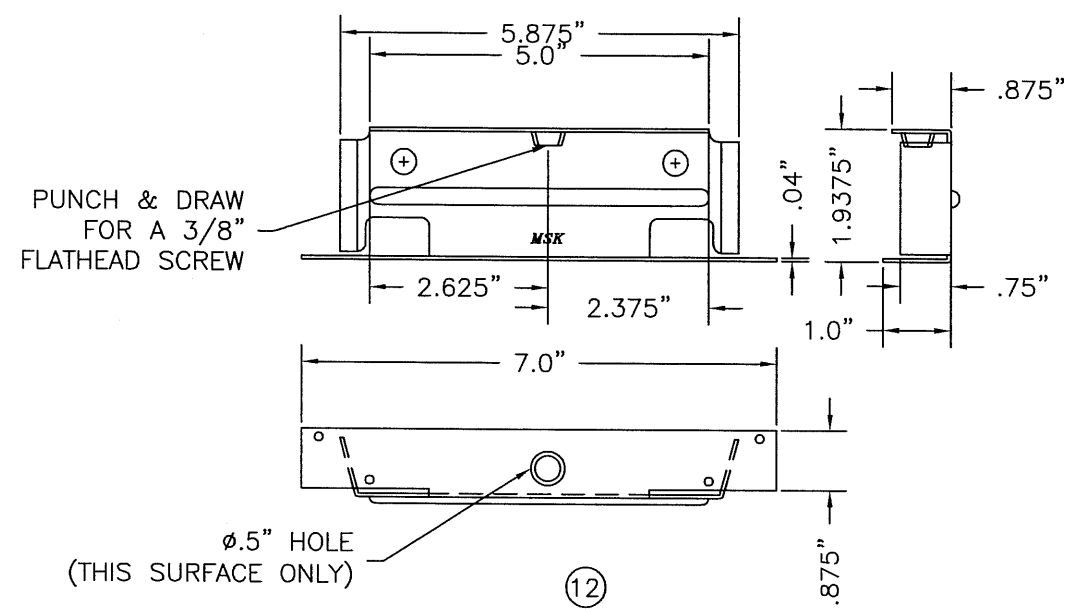
NO.	DATE	REVISIONS
1	8/03/05	REVISE TO 2004 FBC
		EW
		BY

DATE: 02/22/05
SCALE: N.T.S.
DWG. BY: EW
CHK. BY: WWH
DRAWING NO.: FL-446
SHEET 8 OF 11

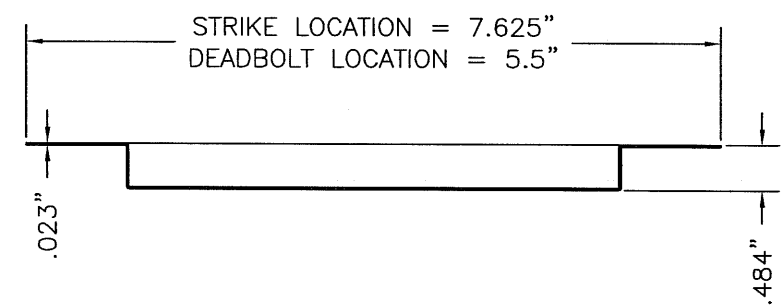
R:\PROJ 500 - 650\PF575\FL-446-REV\FL-446-9-RI.DWG



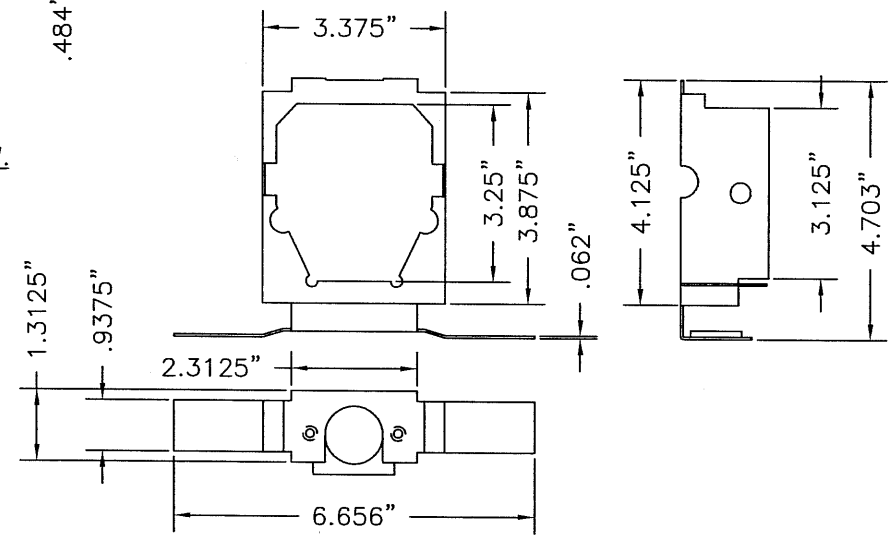
MORTISE LOCK REIN. (19)
14GA. STEEL
BY MESKER



5 3/4\"/>



(29) MORTAR GUARD FOR UNIVERSAL STRIKE FRAME .023\"/>

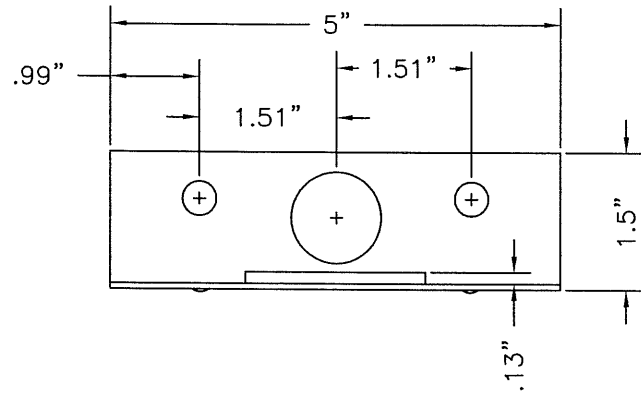


(10) CYLINDER LOCK BOX
CYLINDER LOCK SET & DEADBOLT
14GA. STEEL
BY MESKER

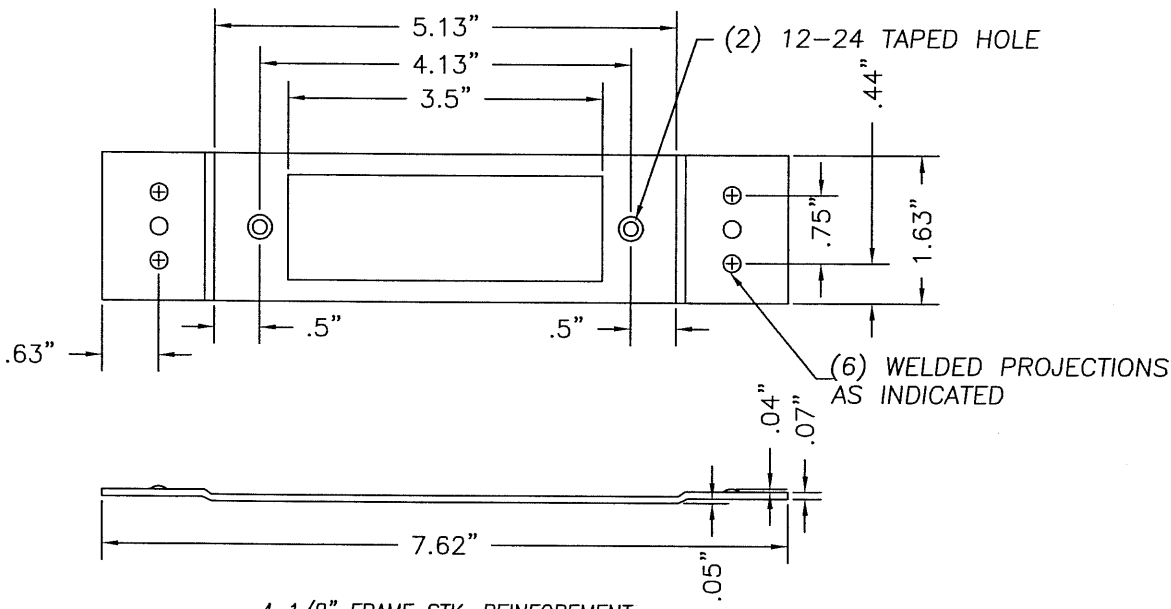
Documents Prepared By:
RW BUILDING CONSULTANTS, INC.
 P.O. Box 230 Valrico FL 33595
 Phone No.: 813.659.9197
 Florida Board of Professional Engineers
 Certificate of Authorization No. 9813
Wendell W. Haney 8/12/05
 Wendell W. Haney, P.E. No. 54158

PRODUCT:	MESKER 3'-0" x 7'-0" COMMERCIAL STEEL DOOR IN A H.M.F.	
PART OR ASSEMBLY:	UNIT COMPONENTS	
NO.	DATE	BY
1	8/03/05	EW
REVISE TO 2004 FBC		
REVISIONS		

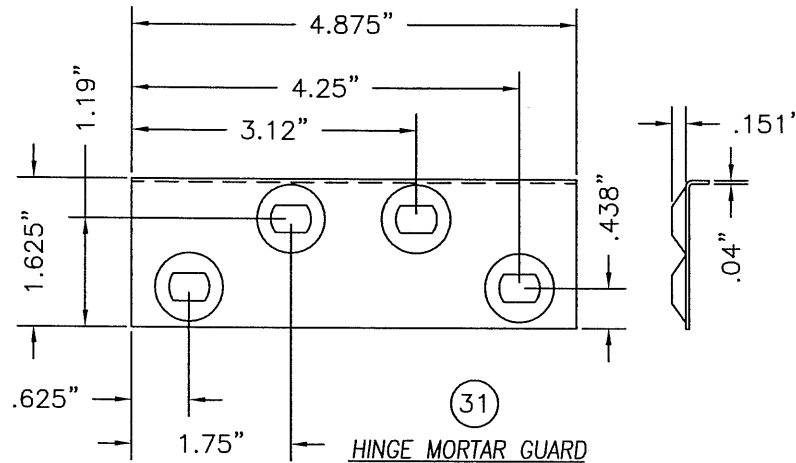
DATE: 02/22/05
 SCALE: N.T.S.
 DWG. BY: EW
 CHK. BY: WWH
 DRAWING NO.: FL-446
 SHEET 9 OF 11



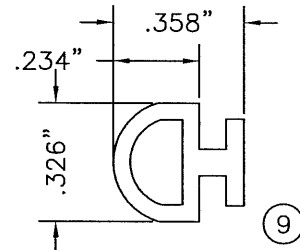
25
FLOOR ANCHOR
.063" STEEL
BY MESKER



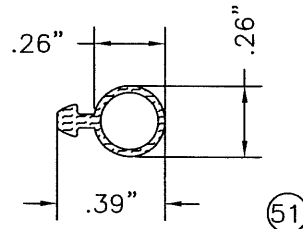
53
4 1/8" FRAME STK. REINFORCEMENT
(MORTISE & CYLINDRICAL LOCKS)
14 ga. C.R.S BY MESKER



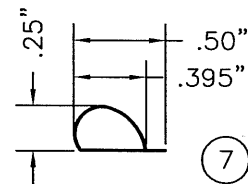
31
HINGE MORTAR GUARD
FRAME HINGE JAMB
.040" THK STEEL
BY MESKER



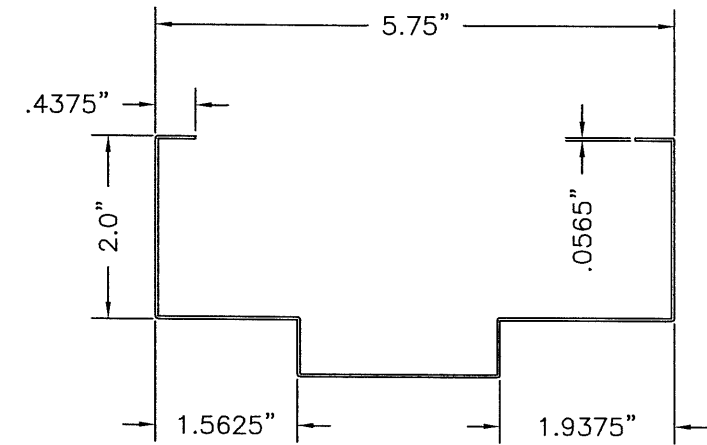
9
THRESHOLD WEATHERSTRIP
.046" MIN. WALL EXTRUDED VINYL
USED W/ ITEM #8



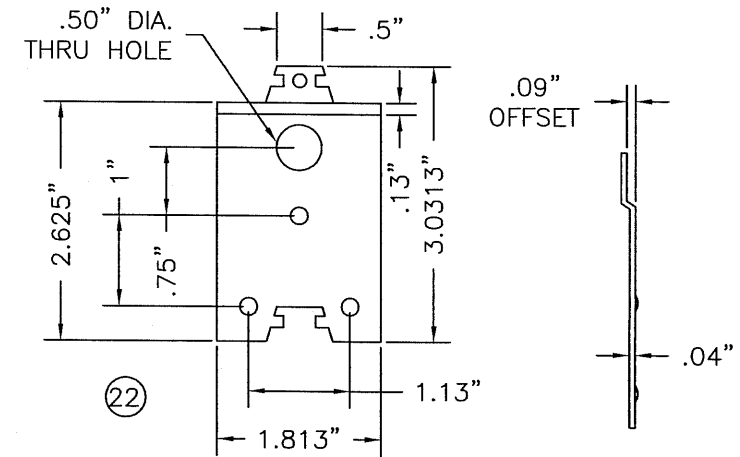
51
THRESHOLD WEATHERSTRIP
.030" MIN. WALL EXTRUDED VINYL
USED W/ ITEM #33



7
STICK ON FRAME WEATHERSTRIP
PEMCO S88D, HIGH TEMP. SILICONE



3
5 3/4" HOLLOW METAL FRAME
16GA. (.0565" MIN.) C.R.S.
BY MESKER



22
FRAME TAB (GUSSET)
18GA. C.R.S.
BY MESKER

Documents Prepared By:

RW BUILDING CONSULTANTS, INC.
P.O. Box 230 Valrico FL 33595
Phone No.: 813.659.9197
Florida Board of Professional Engineers
Certificate Of Authorization No. 9813
Wendell W. Harney, P.E. No. 54158

PRODUCT: MESKER
3'-0" x 7'-0" COMMERCIAL
STEEL DOOR IN A H.M.F.

PART OR ASSEMBLY:
UNIT COMPONENTS

NO.	DATE	REVISIONS	EW	BY
1	8/03/05	REVISE TO 2004 FBC		

DATE: 02/22/05

SCALE: N.T.S.

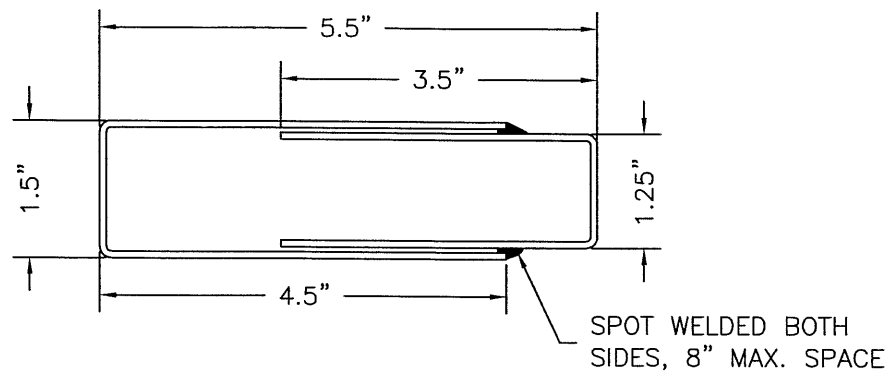
DWG. BY: EW

CHK. BY: WWH

DRAWING NO.:

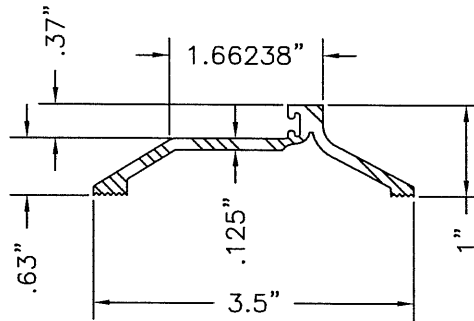
FL-446

SHEET 10 OF 11

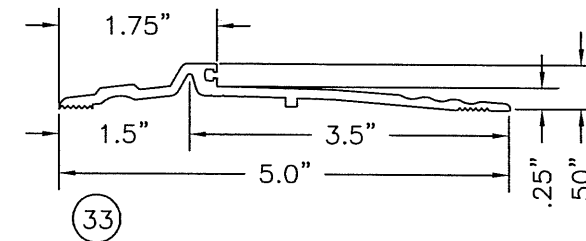


49 PERIMETER REINFORCEMENT
.072" THK. C.R.S.
BY MESKER

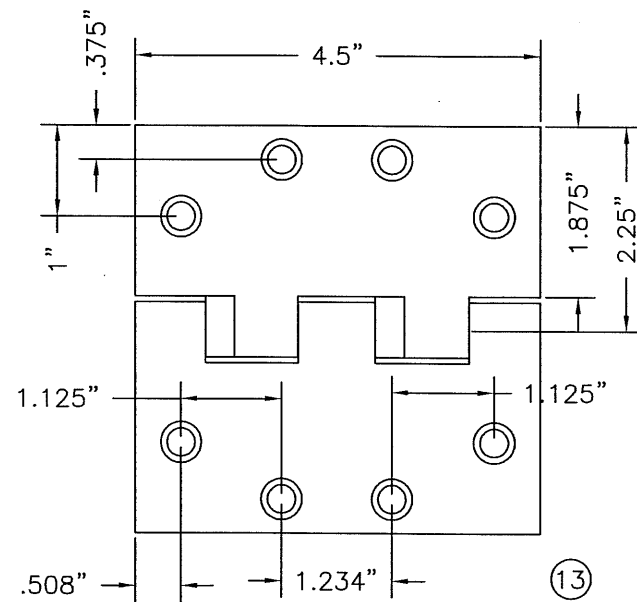
TOP & BOTTOM RAIL LENGTH = 34.6875"
SIDE STILE LENGTH = 71.5"



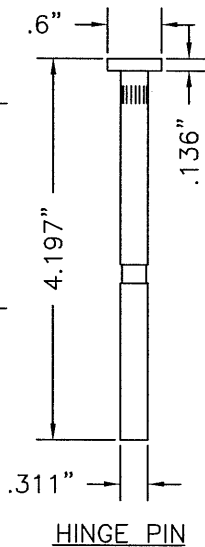
8 BUMPFACE THRESHOLD
.125" EXTRUDED ALUM.
NATIONAL GUARD PRODUCTS INC.
#891V, 6063-T6 ALUM.



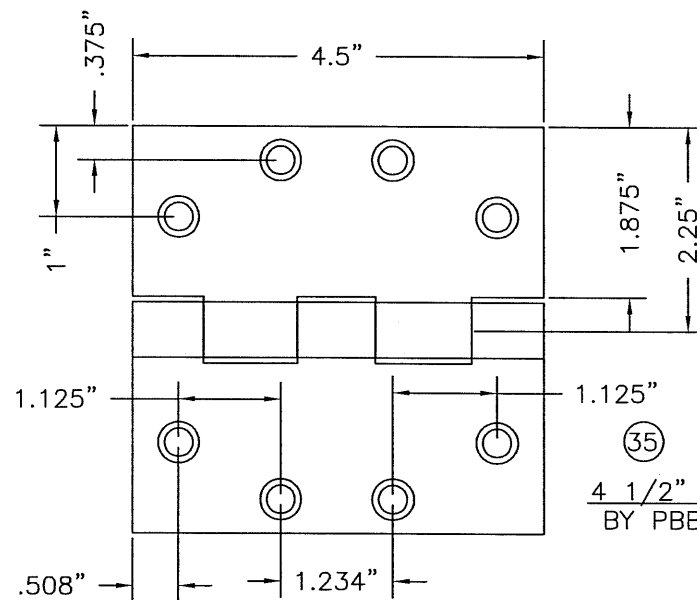
33 PANIC THRESHOLD NATIONAL GUARD
PRODUCTS NGP 896 .105" ALUM. WALL



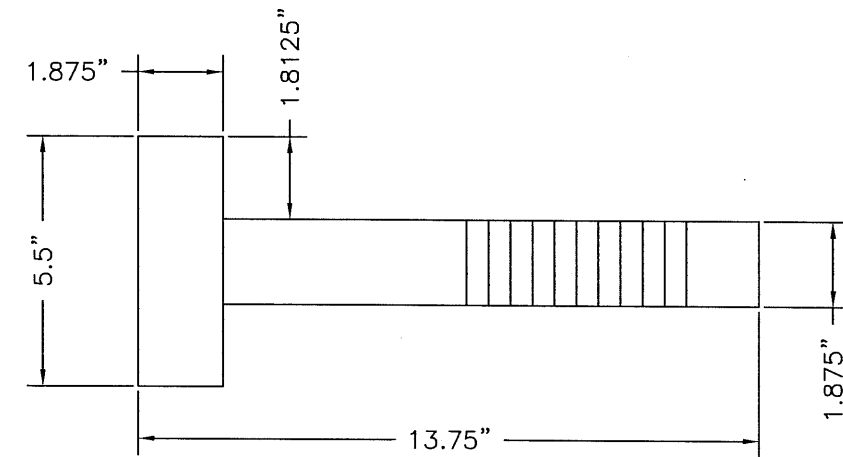
13 4 1/2" TEMPLATE HINGE
BY HAGER .134" THK. STEEL



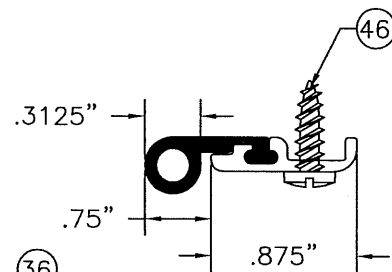
HINGE PIN



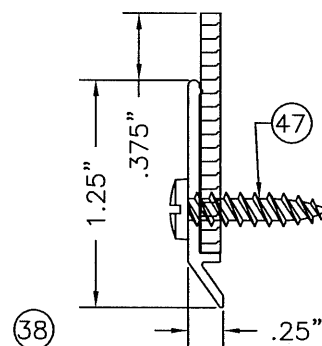
35 4 1/2" TEMPLATE HINGE
BY PBB .135" STEEL



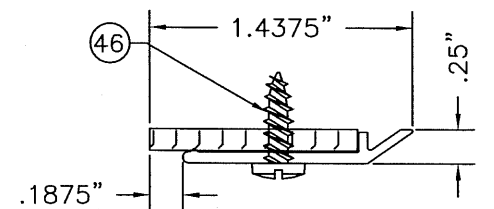
11 MASONRY 'TEE' ANCHOR
.050" THK. STEEL
BY MESKER



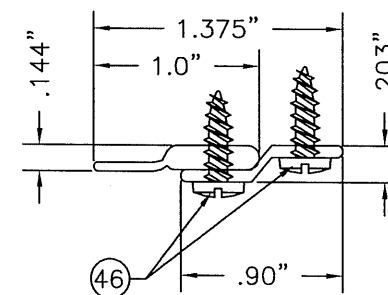
36 SURFACE MOUNTED FRAME
WEATHERSTRIP
NATIONAL GUARD PRODUCTS #137SA



38 SURFACE MOUNTED DOOR
BOTTOM SWEEP
NATIONAL GUARD PRODUCTS #200SA



37 SURFACE MOUNTED FRAME
WEATHERSTRIP
NATIONAL GUARD PRODUCTS #130NA



39 SURFACE MOUNTED FRAME
WEATHERSTRIP
NATIONAL GUARD PRODUCTS #9125A

Documents Prepared By:

BUILDING CONSULTANTS, INC.
P.O. Box 230 Valrico FL 33595
Phone No.: 813.659.9797
Florida Board of Professional Engineers
Certificate Of Authorization No. 9813
Wendell W. Haney, P.E. No. 54158

PRODUCT: MESKER
3'-0" x 7'-0" COMMERCIAL
STEEL DOOR IN A H.M.F.

PART OR ASSEMBLY:
UNIT COMPONENTS

NO.	DATE	REVISIONS	EW	BY
1	8/03/05	REVISE TO 2004 FBC		

DATE: 02/22/05

SCALE: N.T.S.

DWG. BY: EW

CHK. BY: WWH

DRAWING NO.: FL-446

SHEET 11 OF 11