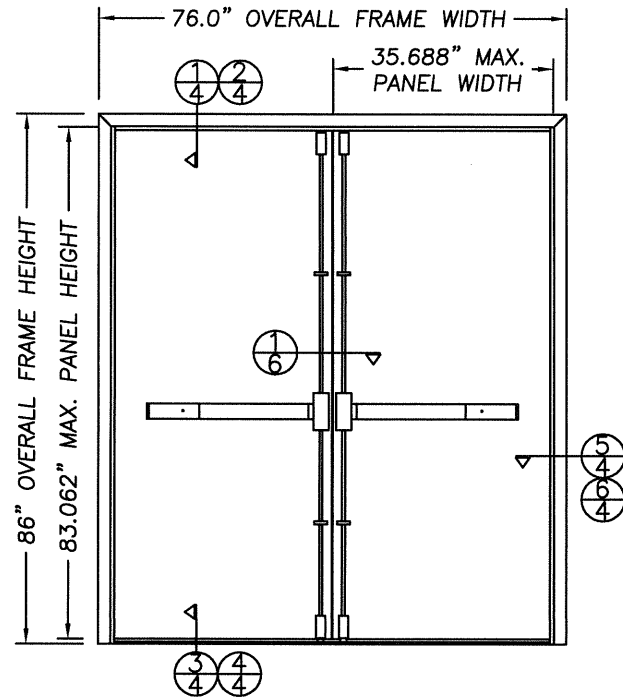


MESKER

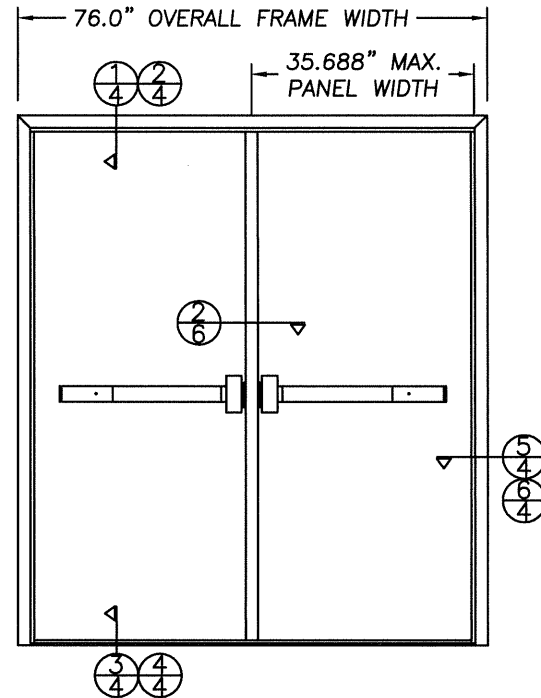
SINCE 1864 THE FIRST DOOR and STILL THE FIRST DOOR

3440 Stanwood Blvd.
Huntsville, AL. 35811-9021
Phone: 256-851-6670 Fax: 256-851-7896

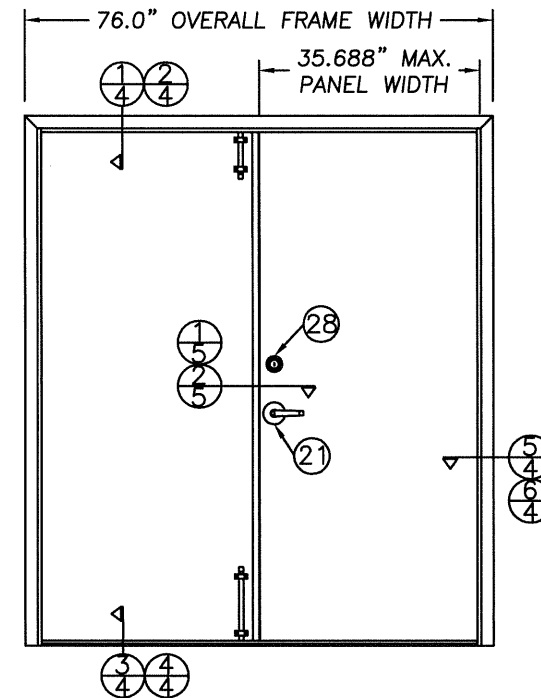
"H" and "HURRICANE" COMMERCIAL STEEL DOOR IN A 16ga. HOLLOW METAL FRAME



MAX. PRESSURE + 80 / - 80 PSF
OUTSWING TESTED ELEVATION
VIEWED FROM THE INTERIOR
SHOWN W/DORMA 9400
VERTICAL RODS W/PUSH BAR



MAX. PRESSURE + 65.1 / - 65.1 PSF
OUTSWING TESTED ELEVATION
VIEWED FROM THE INTERIOR
SHOWN W/DORMA 9300
RIM DEVICE W/PUSH BAR



MAX. PRESSURE + 80 / - 80 PSF
OUTSWING ELEVATION
VIEWED FROM THE INTERIOR
SHOWN CORBIN/RUSSWIN
CL3300 LEVER LOCKSET &
DL3000 CYLIN. DEAD LOCK
ML2000 MORTISE W/LEVER

GENERAL NOTES

- This product has been evaluated and is in compliance with the 2004 Florida Building Code structural requirements including the "High Velocity Hurricane Zone".
- Product anchors shall be as listed and spaced as shown on details. Anchor embedment to base material shall be beyond wall dressing or stucco.
- When used in the "High Velocity Hurricane Zone" (HVHZ) this product complies with Section 1626 of the Florida Building Code and does not require an impact resistant covering.
- When used in areas outside of the "HVHZ" requiring wind-borne debris protection this product complies with section 1606.1.4 of the FBC and does not require an impact resistant covering. This product meets missile level "D" and includes wind zone 4 as defined in ASTM E1996.
- Site conditions that deviate from the details of this drawing require further engineering analysis by a licensed engineer or registered architect.
- This product meets the water requirements of the "HVHZ" up to a positive DP of 40 PSF.

DESIGN PRESSURE RATING			
DOOR TYPE	HARDWARE TYPE	DOES NOT MEET WATER REQUIREMENTS	
THE "H" DOOR	CORBIN/RUSSWIN CL3300 SERIES LEVER LOCKSET CORBIN/RUSSWIN DL3000 SERIES CYLIN. DEAD LOCK	+80.0 PSF	-80.0 PSF
THE "H" DOOR	CORBIN/RUSSWIN ML2000 SERIES MORTISE W/LEVER	+80.0 PSF	-80.0 PSF
THE HURRICANE DOOR	DORMA 9300 SERIES RIM DEVICE W/PUSH BAR	+65.1 PSF	-65.1 PSF
THE HURRICANE DOOR	DORMA 9400 SERIES VERTICAL RODS W/PUSH BAR	+80.0 PSF	-80.0 PSF

TABLE OF CONTENTS			
SHT #	DESCRIPTION	SHT #	DESCRIPTION
1	GENERAL NOTES AND TYPICAL ELEVATION	7	ANCHORING LOCATIONS & DETAILS
2	FRAME CONSTRUCTION & BILL OF MATERIALS	8	UNIT COMPONENTS
3	DOOR PANEL CONSTRUCTION	9	UNIT COMPONENTS
4	VERTICAL & HORIZONTAL CROSS SECTIONS	10	UNIT COMPONENTS
5	CORBIN/RUSSWIN HARDWARE DETAILS	11	UNIT COMPONENTS
6	DORMA HARDWARE DETAILS		

Documents Prepared By:

RW BUILDING CONSULTANTS, INC.
P.O. Box 230 Valrico FL, 33595
Phone No.: 813.659.9197
Florida Board of Professional Engineers
Certificate Of Authorization No. 9813
Wendell W. Honey, P.E. No. 54158

PRODUCT: MESKER
6-0 x 7-0 COMMERCIAL
STEEL DOOR IN A H.M.F.

PART OR ASSEMBLY:
GENERAL NOTES &
TYPICAL ELEVATIONS

NO.	DATE	BY	REVISIONS
1	7/30/07	EW	REVISED ANCHORING

DATE: 06/06/07

SCALE: N.T.S.

DWG. BY: TL

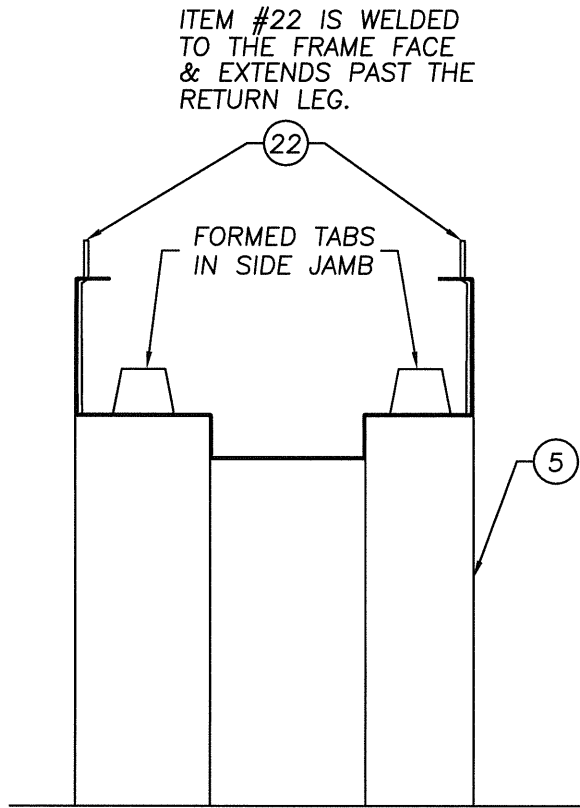
CHK. BY: WWH

DRAWING NO.:

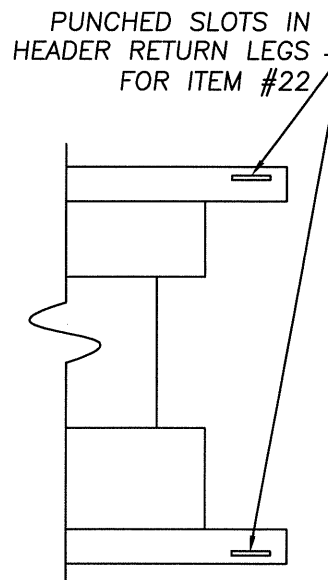
FL-3653

SHEET 1 OF 11

Item	DESCRIPTION	Material
1	THE "H" DOOR, DOOR SKIN 16GA. .0565" MIN. THK. GALV. STEEL with yield strength $F_y(\text{min.})=28,780$ psi	STEEL
2	POLYSTYRENE FOAM DOOR CORE (MESKER PD-POLY)	POLYSTYRENE
3	H.M.F. HEADER 16GA. .053" MIN. (MESKER)	STEEL
4	COMMERCIAL Z-ASTRAGAL, .082" MIN. STEEL (MESKER)	STEEL
5	H.M.F. HINGE JAMB 16GA. .053" MIN. (MESKER)	STEEL
6	DOOR TOP & BOTTOM CLOSER 16GA. .053" MIN. STEEL (MESKER PDBC30)	STEEL
7	FRAME WEATHERSTRIP PEMKO S88D SILICONSEAL (HIGH TEMP. SILICONE)	SILICONE
8	BUMPFACE THRESHOLD NATIONAL GUARD PROD. #891V .125" ALUM.	ALUM.
9	THRESHOLD WEATHERSTRIP (EXTRUDED VINYL NATIONAL GUARD PROD. COMES ON ITEM #8)	VINYL
10	CYLINDER LOCK BLOCK (MESKER PDCLB)	STEEL
11	MASONRY 'TEE' ANCHOR (MESKER PFMT5)	STEEL
12	5 3/4" COMPLETED OPENING ANCHOR (MESKER UNA-5 3/4")	STEEL
13	4 1/2" TEMPLATE HINGE BY HAGER .135" THK.	STEEL
14	STD. 4 1/2" FRAME HINGE REINF. 7GA. .175" (MESKER PF4HR)	STEEL
15	STD. (SHORT) DOOR HINGE REIN. (MIDDLE & BOTTOM) 7GA. .175" (MESKER PDNHR450))	STEEL
16	12-24 x 1/2" MACHINE SCREW	STEEL
17	1/4" TAPCON x 2-1/4" LG. MIN. BY ITW	STEEL
18	3/8" ITW DYNABOLT SLEEVE ANCHOR	STEEL
19	MORTISE LOCK REINFORCEMENT 14GA. .0747" STEEL (MESKER PDMLB)	STEEL
20	SURFACE BOLT 8" LG. HAGER 275D (TOP OF DOOR)	STEEL
21	HEAVY DUTY LEVER LOCKSET CL3300 SERIES (CORBIN/RUSSWIN)	-
22	FRAME TAB (GUSSET 18GA. C.R.S. .0625" MESKER FT001)	STEEL
23	BLANK MORTISE LOCK REINFORCEMENT 14 GA. .0747" (MESKER PDMLBB)	STEEL
24	SURFACE BOLT 12" LG. HAGER 276D (BOTTOM OF DOOR)	STEEL
25	FLOOR ANCHOR (MESKER PFS45)	STEEL
26	3/8" x 1 1/2" L. SEXBOLT (SURFACE BOLT ATTACH.)	STEEL
27	STD. (LONG) DOOR HINGE REIN. (TOP HINGE MESKER PDNLHR 450)	STEEL
28	CYLINDRICAL DEAD LOCK DL3000 SERIES (CORBIN/RUSSWIN)	-
29	INACTIVE DOOR STRIKE SIDE WELDED I-BEAM REIN. (14GA. C.R.S. .062" MESKER LA-1482)	STEEL
30	MORTISE LOCKSET W/LEVER HANDLE ML2000 SERIES (CORBIN/RUSSWIN)	-
31	HINGE MORTAR GUARD FOR FRAME BY MESKER 0.040" STEEL	STEEL
32	THE "HURRICANE" DOOR, DOOR SKIN 16 ga. .053" MIN. THK. GALV. STEEL W/ 14ga. INTERIOR SIDE INNER LAYER (SEE CROSS SECTIONS SH. 3)	-
33	PANIC THRESHOLD NATIONAL GUARD PROD. #NGP 896 .105" ALUM.	ALUM.
34	1/4-20 x 4" BOLT, NUT & WASHER (SURFACE BOLT ATTACH.)	-
35	4 1/2" TEMPLETE HINGE BY PBB .135" THK.	-
36	SURFACE MOUNTED FRAME WEATHERSTRIP (NATIONAL GUARD PRD. #137SA)	-
37	SURFACE MOUNTED FRAME WEATHERSTRIP (NATIONAL GUARD PRD. #130NA)	-
38	SURFACE MOUNTED DOOR BOTTOM SWEEP (NATIONAL GUARD PRD. #200SA)	-
39	SURFACE MOUNTED FRAME WEATHERSTRIP (NATIONAL GUARD PRD. #9125A)	-
40	DORMA HARDWARE #9400 VERTICAL RODS W/ PUSH BAR	-
42	SURFACE BOLT 12" LG. 3/4" x 3/4" IVES 360	STEEL
45	DORMA F1300 FIRE MULLION 2" x 3" x .122" THK. STEEL	STEEL
46	#8 x 1/2" PPH SELF TAPING SHEET METAL SCREW (WEATHERSTRIP TO FRAME)	STEEL
47	#10 x 3/4" PPH SELF TAPING SHEET METAL SCREW (SWEEP TO DOOR)	STEEL
48	3/8" x 4" FASTNAL BY REDHEAD (MULLION ANCHOR BRACKET TO FRAME & SILL)	STEEL
49	PRIMETER REINFORCEMENT .072" THK. C.R.S. BY MESKER	STEEL
50	#12-24 x 5/8" LG. MACHINE SCREW (RIM DEVICE STRIKE TO MULLION)	STEEL
51	THRESHOLD WEATHERSTRIP (EXTRUDED VINYL NATIONAL GUARD PROD. COMES ON ITEM #33)	VINYL
52	DORMA HARDWARE #9300 RIM DEVICE W/ PUSH BAR	-



DETAIL A
JAMB DETAIL W/
FORMED & WELDED
TABS



DETAIL B
HEADER DETAIL W/PUNCHED
SLOTS FOR JAMB TABS

FRAME CONSTRUCTION NOTE:

- THE HEADER, ITEM #3 AND THE SIDE JAMBS, ITEM #5 ARE A ONE-PIECE BRAKE PRESS FORMED STEEL FRAME FROM 16GA. (0.053" MIN.) COLD ROLLED STEEL. THE CORNERS OF BOTH THE HEADER AND SIDE JAMBS ARE MITERED, BUTTED AND SEAM WELDED. THE HEADER HAS SLOTS PUNCHED IN BOTH RETURN LEGS (SEE DETAIL B SHEET 2) FOR THE 18GA. (0.0625" MIN.) FRAME TAB (GUSSET), ITEM #22, THAT ARE WELDED TO SIDE JAMBS. THE TABS ARE BENT 90° OVER THE HEADFER AFTER BEING SLIPPED THROUGH THE SLOTS TO CREATE A MECHANICAL JOINT. THE HEADER ALSO HAS A PUNCHED SLOT IN BOTH RABBITS, SEE DETAIL B SHEET 2. THE SIDE JAMBS HAVE ONE FORMED TAB IN EACH RABBIT, SEE DETAIL A SHEET 2. THE FORMED TABS ON THE SIDE JAMBS ARE SLID INTO THE PUNCHED SLOTS IN THE HEADER AND BENT OVER 90° TO CREATE A MECHANICAL LOCK.

- EACH HINGE LOCATION ON THE SIDE JAMB HAS A 7GA. (0.175" MIN.) STEEL FRAME HINGE REINFORCEMENT, ITEM #14, WELDED TO THE BACK SIDE. EACH HINGE THEN HAS AN 0.040" MIN. STEEL MORTAR GUARD, ITEM #31, WELDED TO THE FRAME OVER THE HINGE REINFORCEMENT.

- THE FRAME SYSTEM USES AN ALL ALUMINUM BUMP THRESHOLD NATIONAL GUARD PRODUCTS NUMBER 891V, ITEM # 8, OR NATIONAL GUARD PRODUCTS NUMBER NGP 896, ITEM #33.

Documents Prepared By:

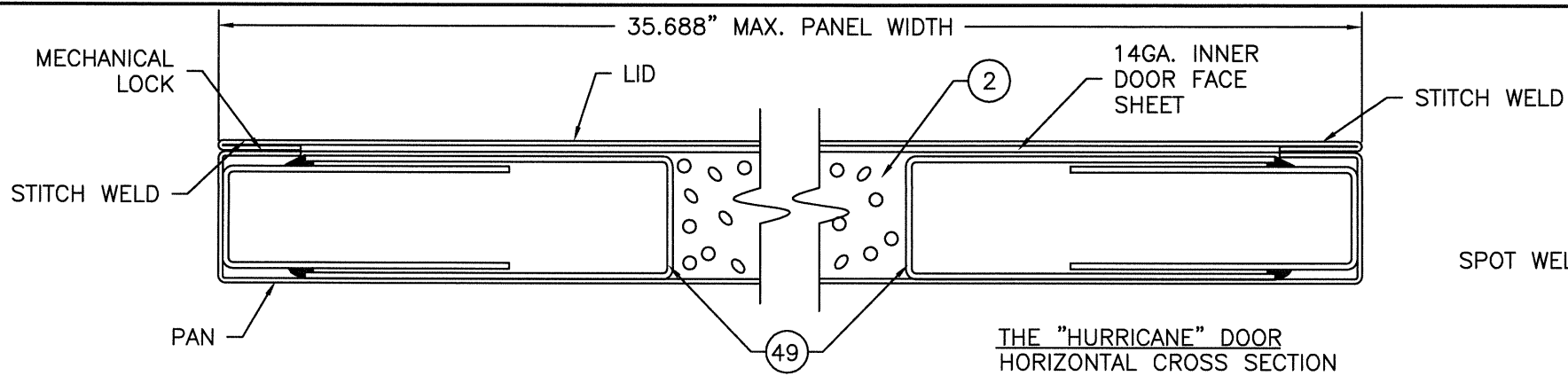
R.W. BUILDING CONSULTANTS, INC.
P.O. Box 230 Vairico FL 33595
Phone No.: 813.659.9197
Florida Board of Professional Engineers
Certificate of Authorization No. 9813
Wendell W. Harty, P.E. No. 54158

PRODUCT: MESKER 6-0 x 7-0 COMMERCIAL STEEL DOOR IN A H.M.F.
PART OR ASSEMBLY: FRAME CONSTRUCTION & BILL OF MATERIALS

NO.	DATE	REVISIONS
1	7/30/07	REVISED ANCHORING
		EW
		BY

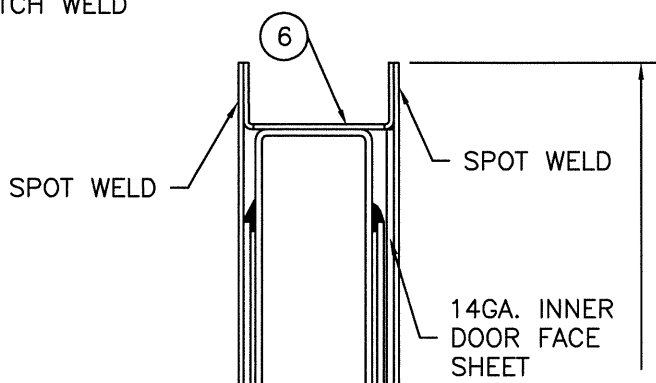
DATE: 06/06/07
SCALE: N.T.S.
DWG. BY: TL
CHK. BY: WWH
DRAWING NO.: FL-3653
SHEET 2 OF 11

R:\A - Projects\Project Folders\Proj 1201-1300\p1235\DWG\RWBC Drawings\FL-3653-R1\FL-3653-3.dwg, Model

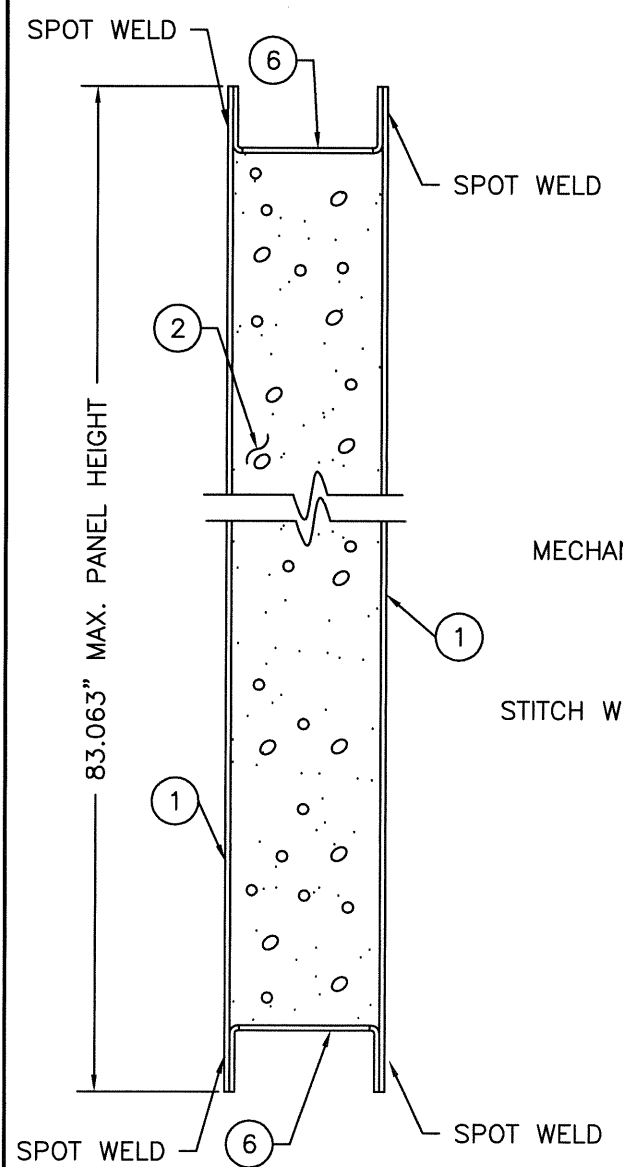


THE "HURRICANE" DOOR
HORIZONTAL CROSS SECTION

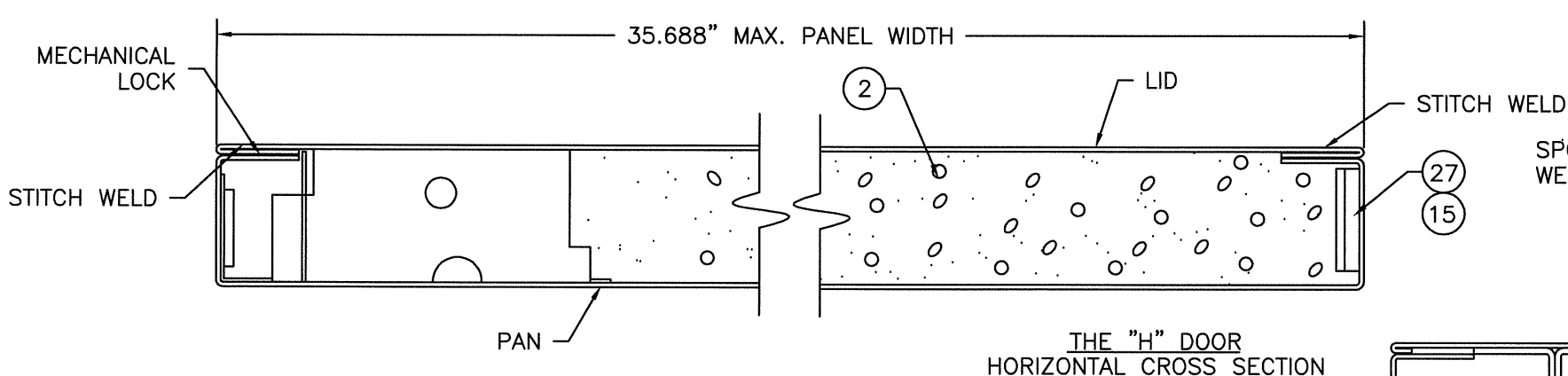
PANEL CONSTRUCTION NOTE:
THE "HURRICANE" DOOR: THE DOOR PANEL, ITEM #32, IS CONSTRUCTED FROM (2) 16GA. (0.053" MIN.) COLD ROLLED STEEL FACE SHEETS ON THE EXTERIOR AND (1) 14GA. (0.070" MIN.) COLD ROLLED STEEL INNER DOOR FACE SHEET GLUED TO THE BACKSIDE OF THE INTERIOR 16GA. FACE SHEET. THE PANELS ARE CLOSED ON THE TOP AND BOTTOM WITH A 16GA. (0.053" MIN.) STEEL TOP AND BOTTOM CLOSER, ITEM #6. THE INTERIOR PERIMETER OF THE IS REINFORCED WITH A 2PIECE 14GA. (0.072" MIN.) COLD ROLLED STEEL PERIMETER REINFORCEMENT, ITEM #49. THE REINFORCEMENTS AT THE TOP AND BOTTOM RUN EDGE TO EDGE AND THE SIDE REINFORCEMENTS ARE PLACED IN BETWEEN THEM. THE SIDE REINFORCEMENTS ARE THEN WELDED TO THE TOP AND BOTTOM REINFORCEMENTS. THE INTERIOR CAVITY OF THE PANEL IS FILLED WITH EXPANDED POLYSTYRENE (EPS), ITEM #2. THE PANEL FACE SHEETS ARE FLUSH WITH THE TOP AND BOTTOM CLOSER AND SPOT WELDED TO THE CLOSERS A MAXIMUM OF 3.0" ON CENTER. THE DOOR PANEL PAN HAS BLANKED HOLES EVERY 3.0" ALONG ITS RETURN LEG. THE PANEL LID HAS PUNCHED TABS EVERY 3.0" ITS RETURN LEG. THE LID IS PLACED ON THE PAN AND THE TABS ARE SLID INTO THE PUNCHED HOLES TO CREATE A MECHANICAL LOCK. THE PAN AND LID ARE THEN STITCH WELDED THE FULL LENGTH OF BOTH VERTICAL EDGES.



THE "HURRICANE" DOOR
VERTICAL CROSS SECTION

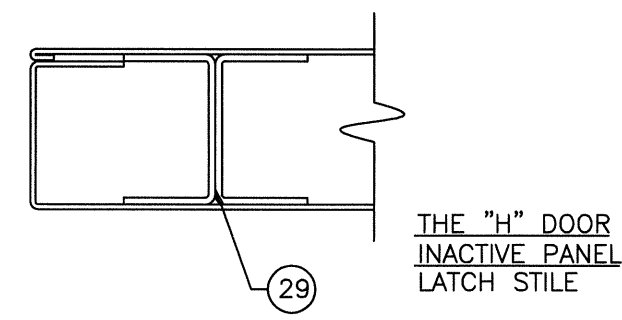


THE "H" DOOR
VERTICAL CROSS SECTION



THE "H" DOOR
HORIZONTAL CROSS SECTION

PANEL CONSTRUCTION NOTE:
THE "H" DOOR: THE DOOR PANEL, ITEM #1, IS CONSTRUCTED FROM (2) 16GA. (0.0565" MIN.) COLD ROLLED STEEL FACE SHEETS. THE PANELS ARE CLOSED ON THE TOP AND BOTTOM WITH A 16GA. (0.053" MIN.) STEEL TOP AND BOTTOM CLOSER, ITEM #6. THE INTERIOR CAVITY OF THE PANEL IS FILLED WITH EXPANDED POLYSTYRENE (EPS), ITEM #2. THE PANEL FACE SHEETS ARE FLUSH WITH THE TOP AND BOTTOM CLOSER AND SPOT WELDED TO THE CLOSERS AT MAXIMUM OF 3.0" ON CENTER THE FULL WIDTH OF THE DOOR PANEL. THE DOOR PANEL PAN HAS BLANKED HOLES EVERY 3.0" ALONG ITS RETURN LEG. THE PANEL LID HAS PUNCHED TABS EVERY 3.0" ITS RETURN LEG. THE LID IS PLACED ON THE PAN AND THE TABS ARE SLID INTO THE PUNCHED HOLES TO CREATE A MECHANICAL LOCK. THE PAN AND LID ARE THEN STITCH WELDED THE FULL LENGTH OF BOTH VERTICAL EDGES. EACH HINGE LOCATION HAS A 7GA. (0.175" MIN.) HOT ROLLED STEEL HINGE REINFORCEMENT TO THE PANEL EDGE. THE TOP LOCATION USES ITEM #27 AND THE MIDDLE AND BOTTOM LOCATIONS USE ITEM #15. THE INACTIVE PANEL IS REINFORCED AT THE LATCH STILE WITH A 14GA. COLD ROLLED STEEL WELDED I-BEAM, ITEM #29.



Documents Prepared By: **RW** BUILDING CONSULTANTS, INC.
P.O. Box 230 Valrico FL 33595
Phone No.: 813.659.9197
Florida Board of Professional Engineers
Certificate Of Authorization No. 9813
Wendell W. Henney, P.E. No. 54158

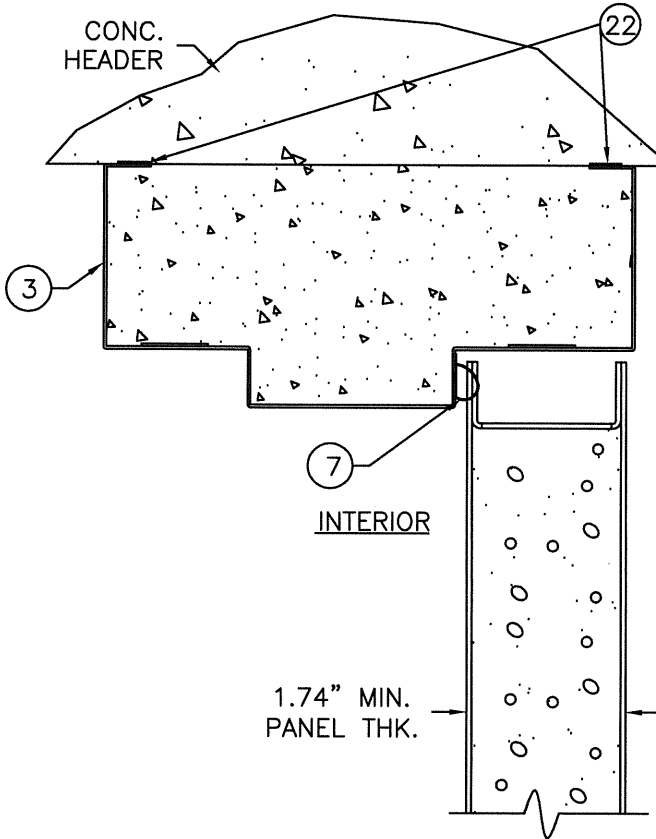
PRODUCT: MESKER
6-0 x 7-0 COMMERCIAL
STEEL DOOR IN A H.M.F.
PART OR ASSEMBLY: DOOR PANEL
CONSTRUCTION

NO.	DATE	REVISIONS
1	7/30/07	REVISED ANCHORING
		EW
		BY

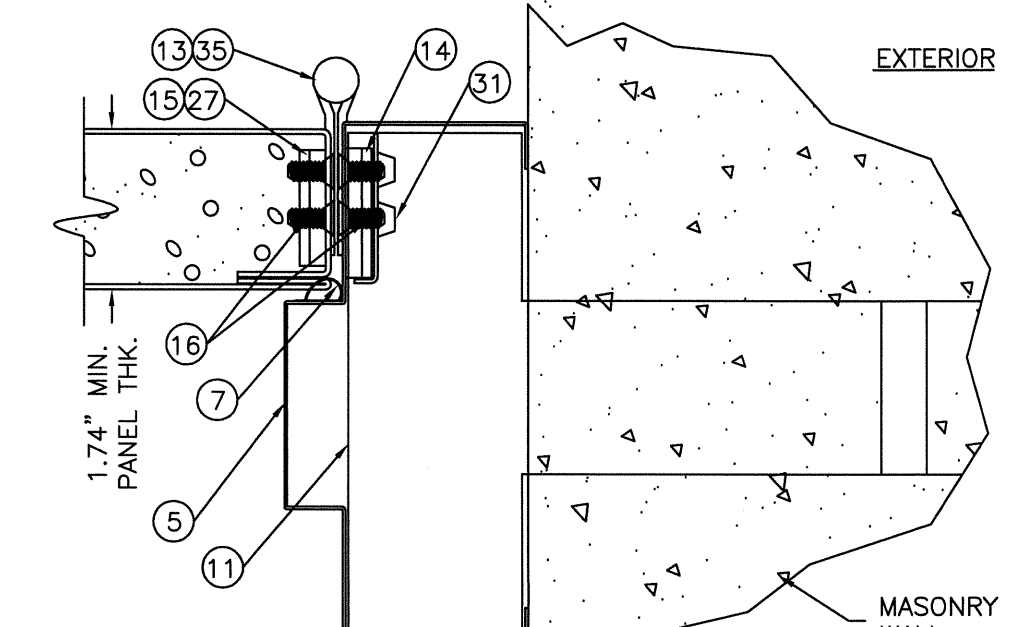
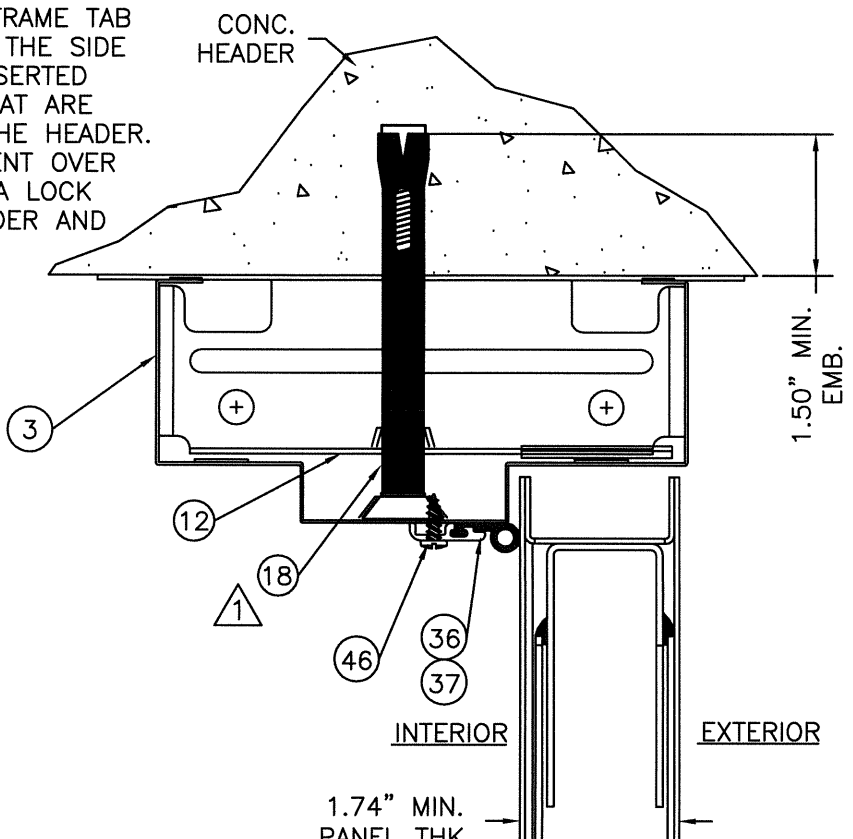
DATE: 06/06/07
SCALE: N.T.S.
DWG. BY: TL
CHK. BY: WWH
DRAWING NO.: FL-3653
SHEET 3 OF 11

© 2007 R.W. BUILDING CONSULTANTS INC.

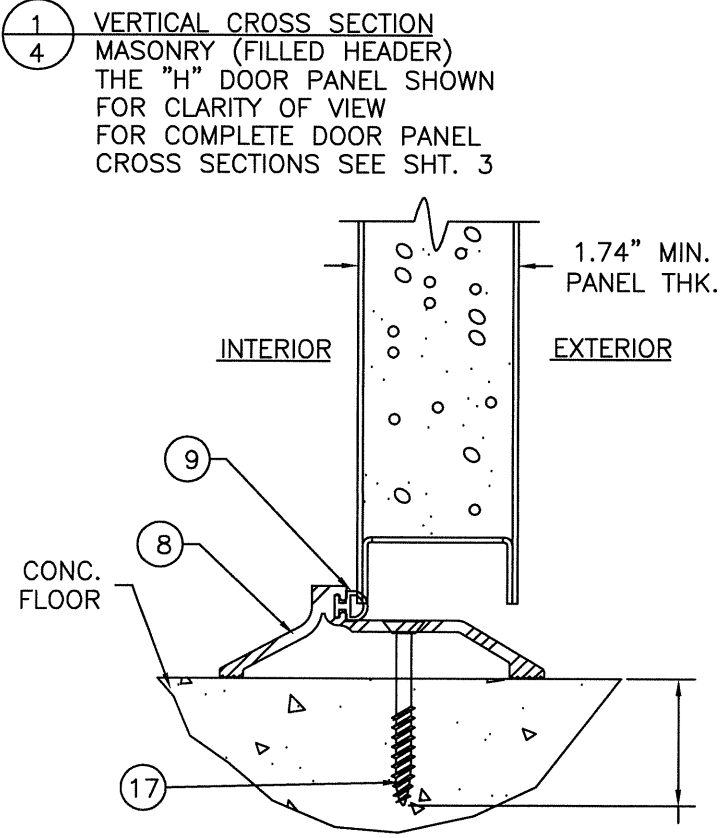
R:\A - Projects\Project Folders\Proj 1201-1300\pf 1235\DWG\RWBC Drawings\FL-3653-R1\FL-3653-4.dwg, Model



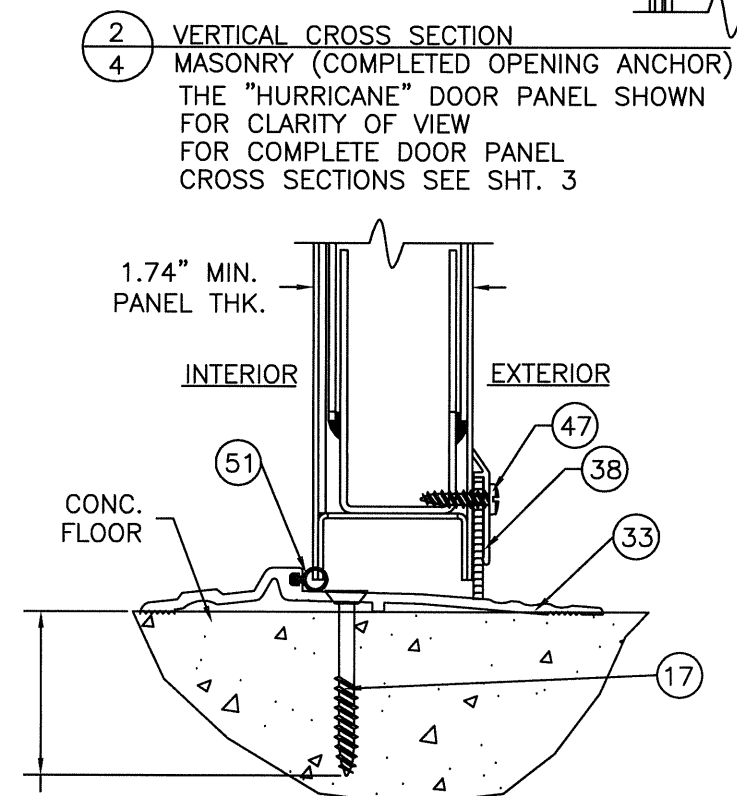
ITEM#22 THE FRAME TAB IS WELDED TO THE SIDE JAMBS AND INSERTED INTO SLOTS THAT ARE PUNCHED IN THE HEADER. THE TAB IS BENT OVER 90° TO FORM A LOCK WITH THE HEADER AND SIDE JAMB.



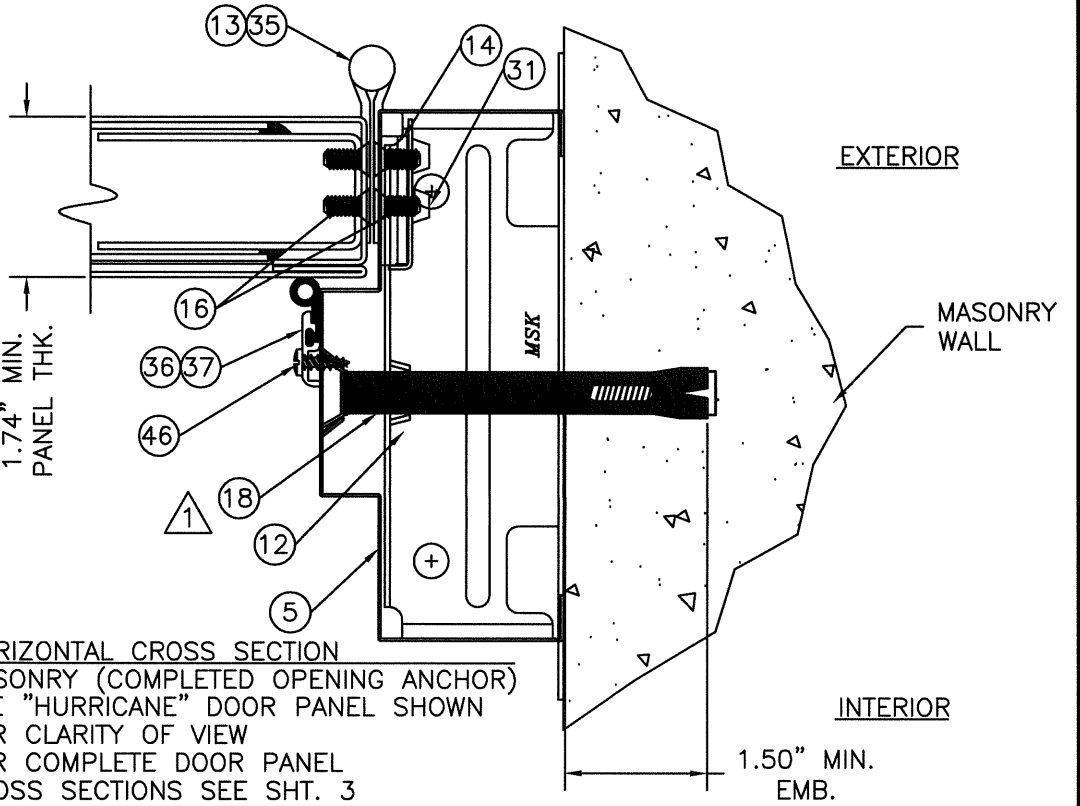
5 HORIZONTAL CROSS SECTION MASONRY (T-ANCHOR) THE "H" DOOR PANEL SHOWN FOR CLARITY OF VIEW FOR COMPLETE DOOR PANEL CROSS SECTIONS SEE SHT. 3



3 UP TO 70.0 PSF D.P. VERTICAL CROSS SECTION W/ITEMS #8 & #9 THE "H" DOOR PANEL SHOWN FOR CLARITY OF VIEW FOR COMPLETE DOOR PANEL CROSS SECTIONS SEE SHT. 3



4 UP TO 80.0 PSF D.P. VERTICAL CROSS SECTION W/ITEMS #33 & #51 THE "HURRICANE" DOOR PANEL SHOWN FOR CLARITY OF VIEW FOR COMPLETE DOOR PANEL CROSS SECTIONS SEE SHT. 3



6 HORIZONTAL CROSS SECTION MASONRY (COMPLETED OPENING ANCHOR) THE "HURRICANE" DOOR PANEL SHOWN FOR CLARITY OF VIEW FOR COMPLETE DOOR PANEL CROSS SECTIONS SEE SHT. 3

NOTE: IN THE "H" DOOR INSTALLATION THE HEADER IS FILLED WITH CONCRETE. THERE ARE NO ANCHORS IN THE FRAME HEADER.

Documents Prepared By: **RW** BUILDING CONSULTANTS, INC.
P.O. Box 230 Valrico FL 33595
Phone No.: 813.659.9197
Florida Board of Professional Engineers
Certificate Of Authorization No. 9813
Wendell W. Haney, P.E. No. 54158

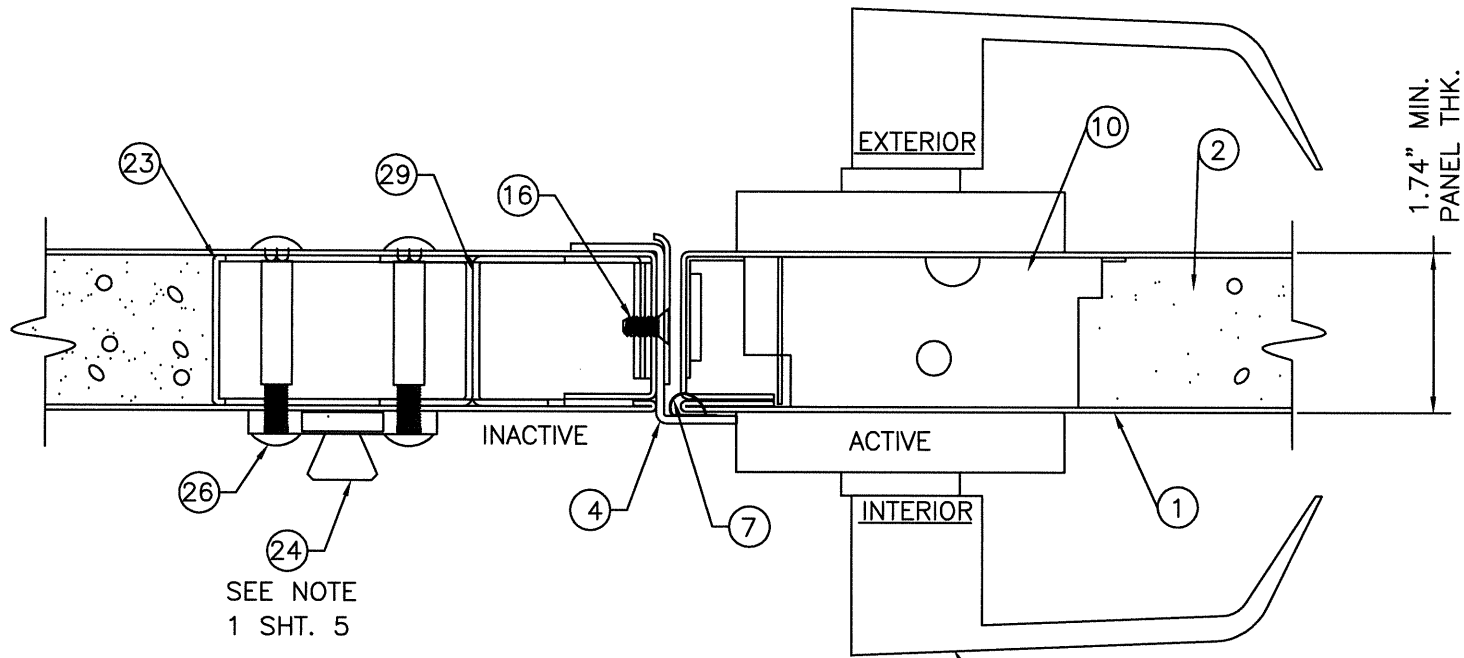
PRODUCT: MESKER 6-0 x 7-0 COMMERCIAL STEEL DOOR IN A H.M.F.
PART OR ASSEMBLY: VERTICAL & HORIZONTAL CROSS SECTIONS

NO.	DATE	REVISIONS
1	7/30/07	REVISED ANCHORING
		EW BY

DATE: 06/06/07
SCALE: N.T.S.
DWG. BY: TL
CHK. BY: WWH
DRAWING NO.: FL-3653
SHEET 4 OF 11

© 2007 R.W. BUILDING CONSULTANTS INC.

R:\A - Projects\Project Folders\Proj 1201-1300\pf 1235\D. RWBC Drawings\FL-3653-R1\FL-3653-5.dwg, Model

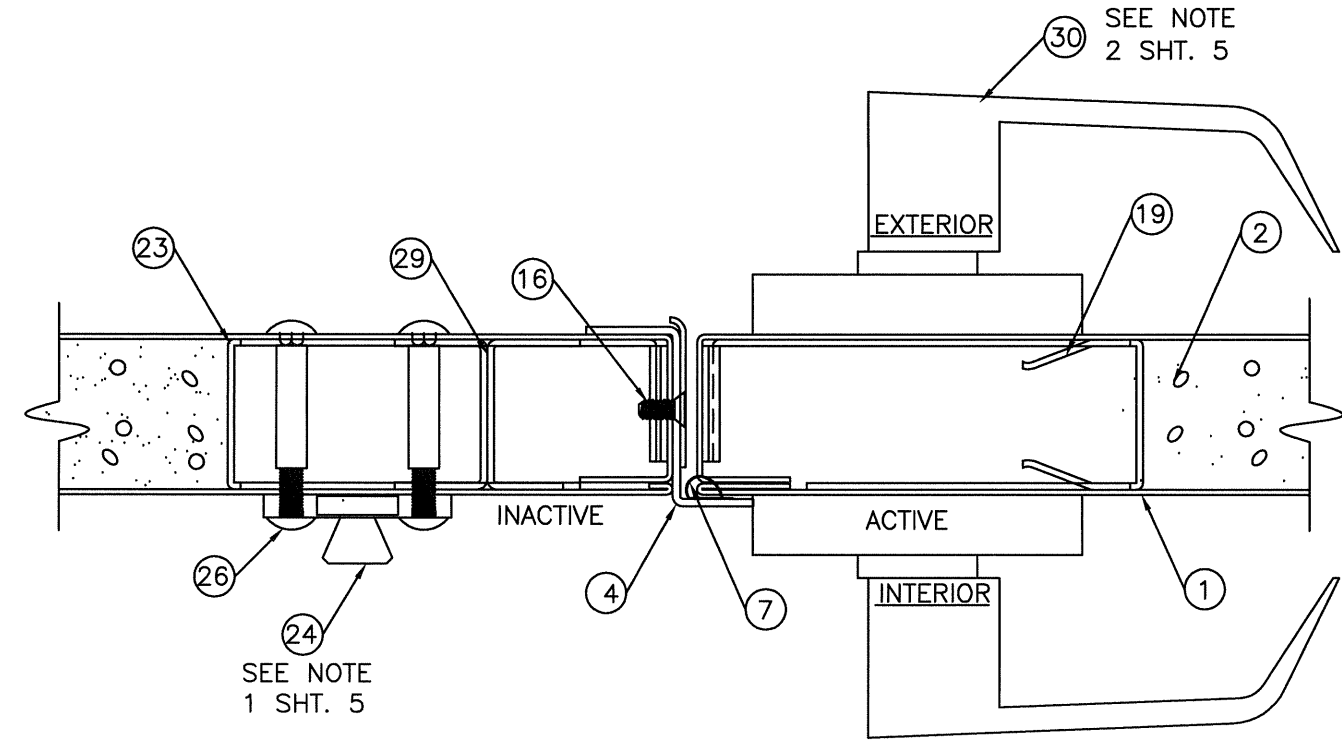


SEE NOTE
1 SHT. 5

1 HORIZONTAL CROSS SECTION THE "H" DOOR
5 W/CORBIN/RUSSWIN CL3300 LEVER LOCKSET
& CORBIN/RUSSWIN DL3000 CYLINDRICAL DEAD LOCK
THE CENTER LINE OF THE STRIKE IS 39.5" UP FROM
THE BOTTOM OF THE DOOR PANEL & THE DEAD LOCK
IS 8.0" ON CENTER FROM THE STRIKE.

21 SEE NOTE
2 SHT. 5

NOTE:
1. ITEM #24 THE 12" LONG HAGER SURFACE BOLT #276D IS
USED ON THE BOTTOM OF THE INACTIVE DOOR PANEL.
ITEM #20 THE 8" HAGER SURFACE BOLT #275D IS USED
ON THE TOP OF THE INACTIVE DOOR PANEL.
2. SEE SHEET 1 FOR THE DESIGN PRESSURE RATING FOR THE
"H" DOOR USING THE CORBIN/RUSSWIN HARDWARE.
3. SEE SHEET 3 FOR THE COMPLETE DOOR CONSTRUCTION
DETAILS.



SEE NOTE
1 SHT. 5

2 HORIZONTAL CROSS SECTION THE "H" DOOR
5 W/CORBIN/RUSSWIN ML2000 MORTISE W/ LEVER HANDLE
THE CENTER LINE OF THE STRIKE IS 39.0" UP FROM
THE BOTTOM OF THE DOOR PANEL.

Documents Prepared By:

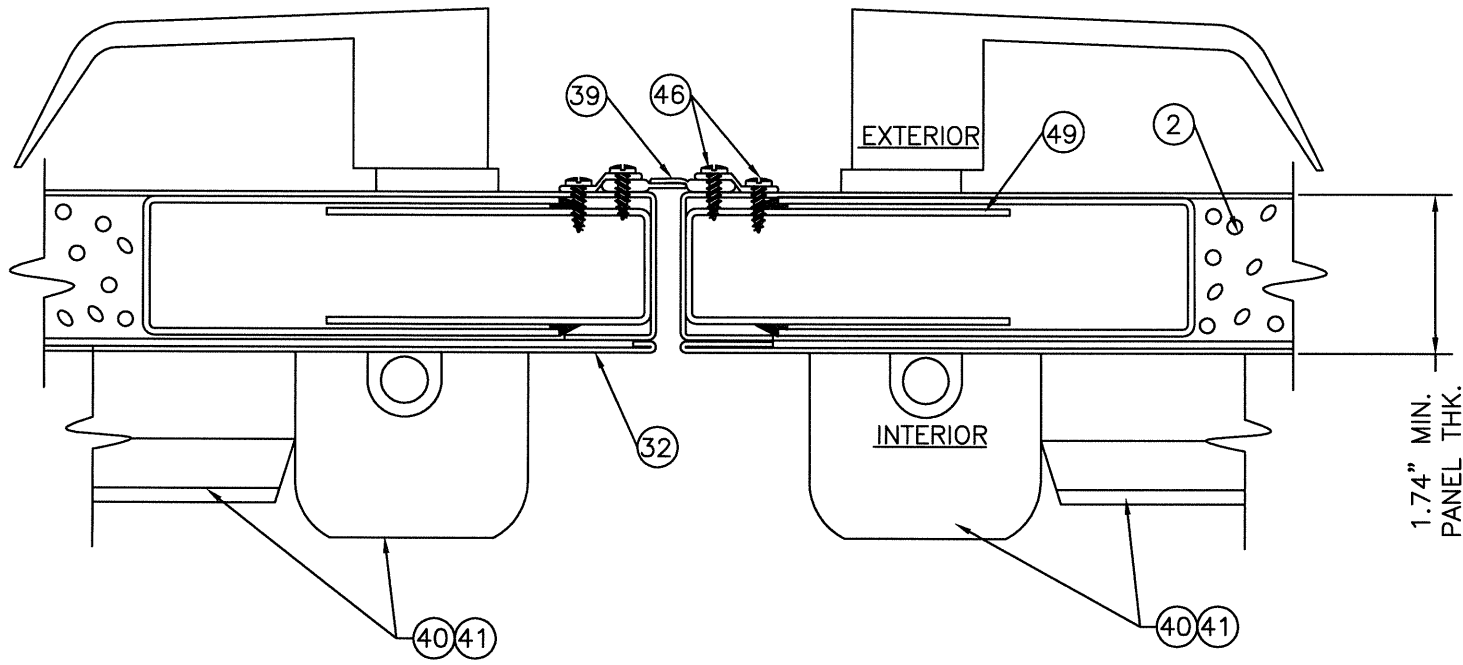
RW BUILDING CONSULTANTS, INC.
P.O. Box 230 Valrico FL 33595
Phone No.: 813.659.9197
Florida Board of Professional Engineers
Certificate Of Authorization No. 9813
Wendell W. Hefley 7-31-07
Wendell W. Hefley, P.E. No. 54158

PRODUCT: MESKER
6-0 x 7-0 COMMERCIAL
STEEL DOOR IN A H.M.F.
PART OR ASSEMBLY:
HORIZONTAL CROSS SECTIONS
W/CORBIN/RUSSWIN HARDWARE

NO.	DATE	BY	REVISIONS
1	7/30/07	EW	REVISED ANCHORING

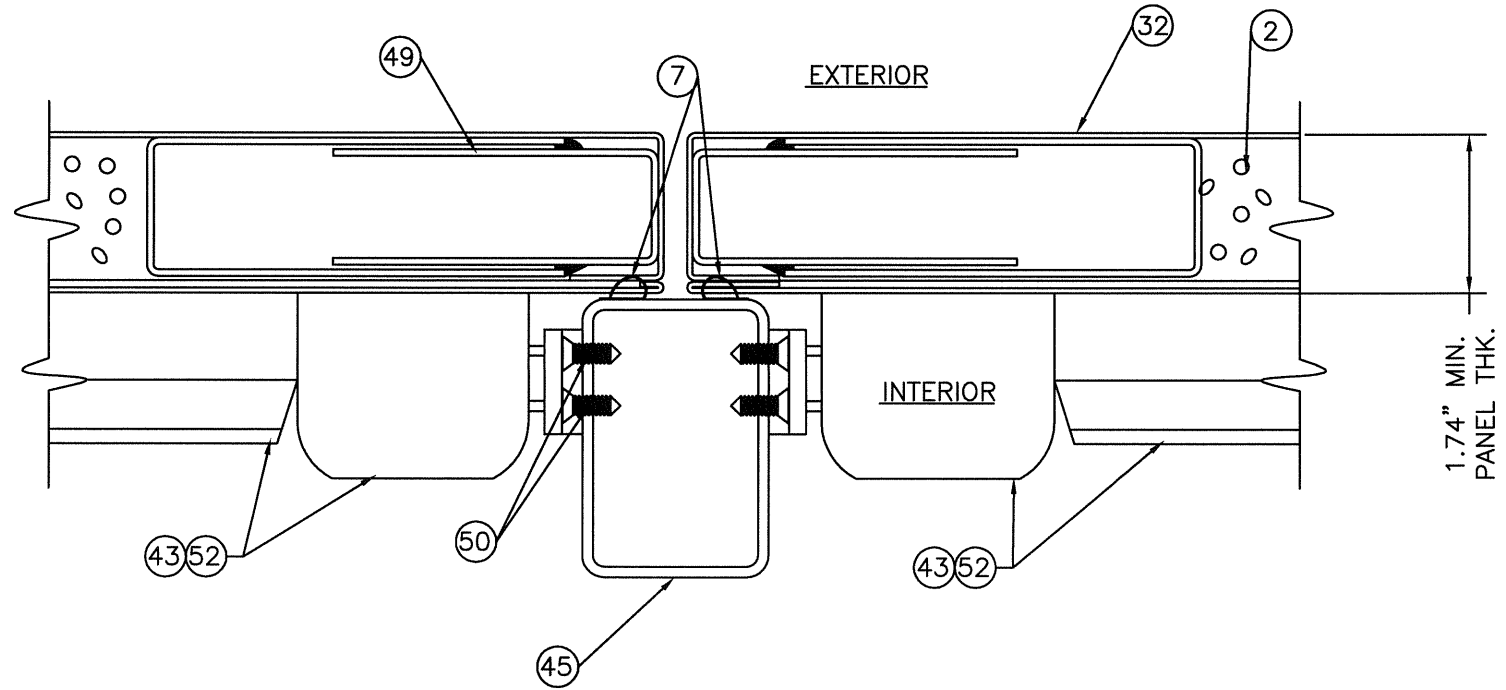
DATE: 06/06/07
SCALE: N.T.S.
DWG. BY: TL
CHK. BY: WWH
DRAWING NO.:
FL-3653
SHEET 5 of 11

© 2007 R.W. BUILDING CONSULTANTS INC.



1
6 HORIZONTAL CROSS SECTION
W/DORMA 9400 VERTICAL RODS
THE CENTER LINE OF THE STRIKE IS
40.0" UP FROM THE BOTTOM OF
THE DOOR PANEL.

NOTES:
1. SEE SHEET 1 FOR DESIGN PRESSURE RATING FOR THE HURRICANE DOOR USING THE DORMA HARDWARE.
2. SEE SHEET 3 FOR THE COMPLETE DOOR CONSTRUCTION DETAILS.



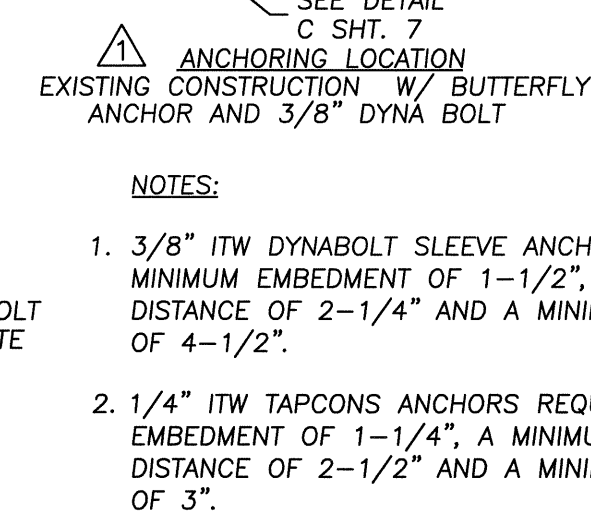
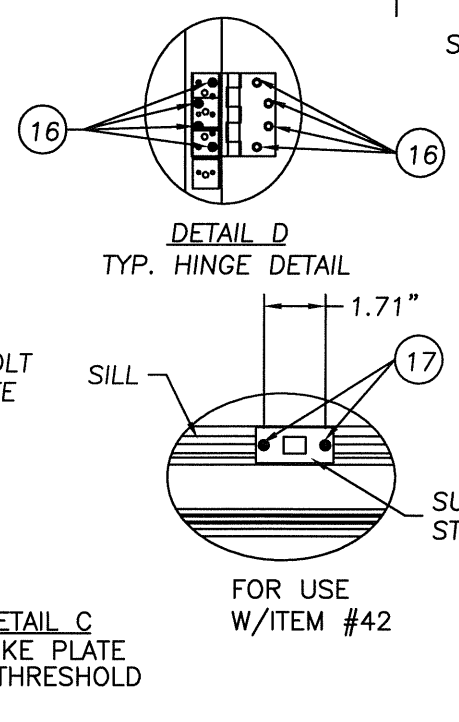
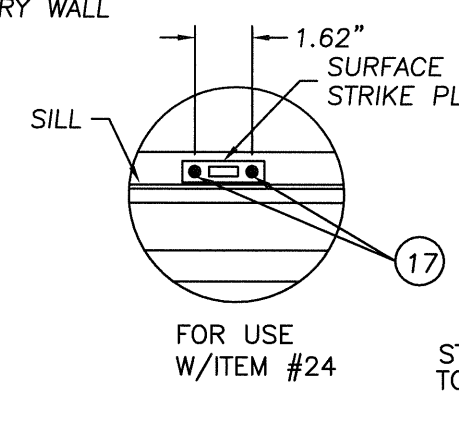
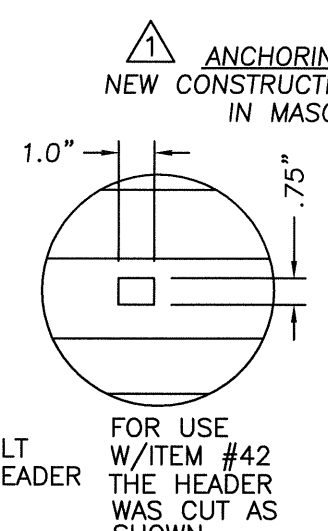
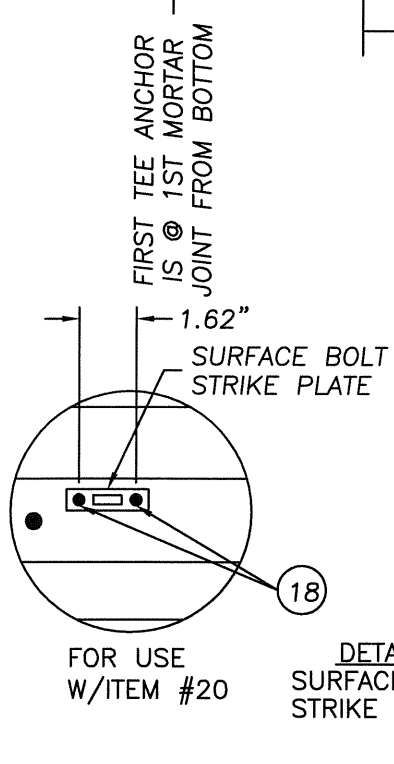
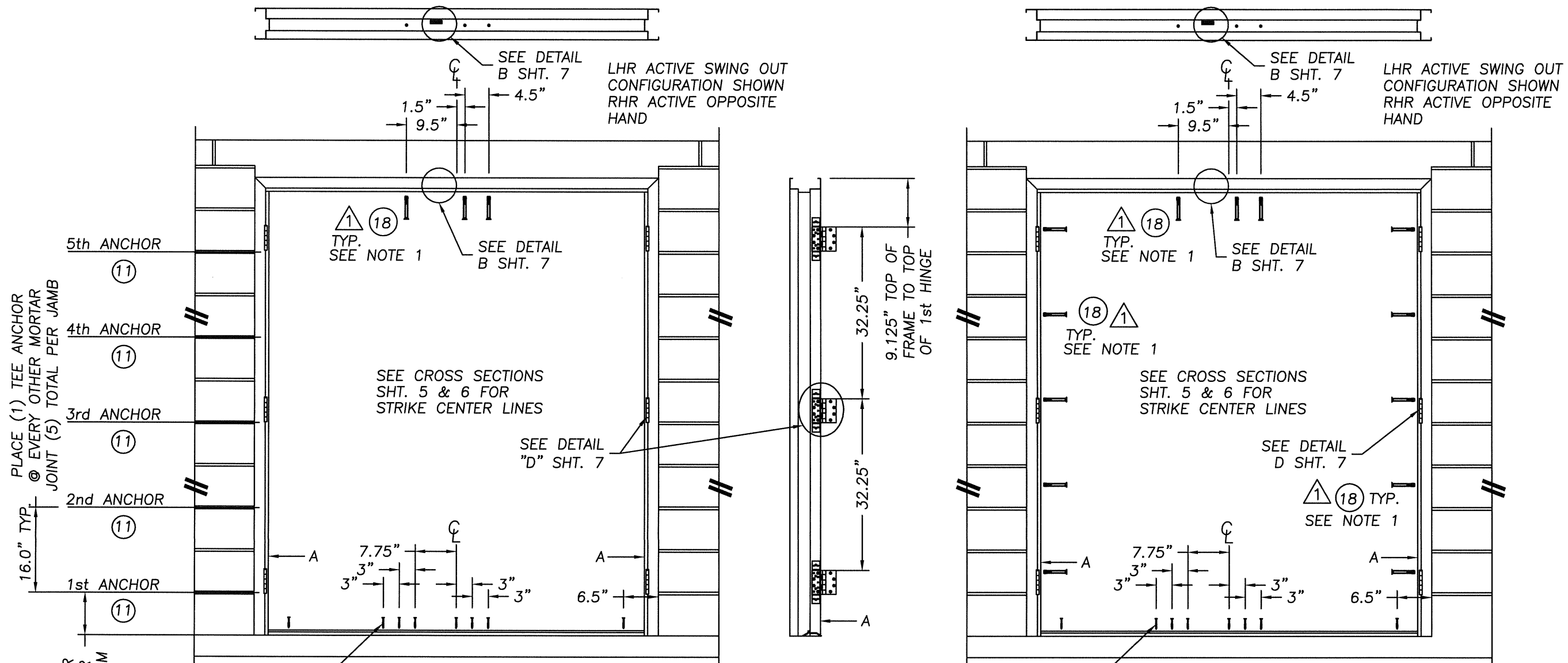
2
6 HORIZONTAL CROSS SECTION
W/DORMA 9300 RIM DEVICE
THE CENTER LINE OF THE STRIKE IS
40.0" UP FROM THE BOTTOM OF THE
DOOR PANEL.

Documents Prepared By: **RW** BUILDING CONSULTANTS, INC.
P.O. Box 230 Valrico FL 33595
Phone No.: 813.659.9197
Florida Board of Professional Engineers
Certificate Of Authorization No. 9813
Wendell W. Hapey 7-31-07
Wendell W. Hapey, P.E. No. 54158

PRODUCT:	MESKER 6-0 x 7-0 COMMERCIAL STEEL DOOR IN A H.M.F.
PART OR ASSEMBLY:	HORIZONTAL CROSS SECTION W/DORMA HARDWARE
NO.	1
DATE	7/30/07
REVISIONS	REVISED ANCHORING
BY	EW
DATE	

DATE: 06/06/07
SCALE: N.T.S.
DWG. BY: TL
CHK. BY: WWH
DRAWING NO.: FL-3653
SHEET 6 OF 11

© 2007 R.W. BUILDING CONSULTANTS INC.



- NOTES:**
- 3/8" ITW DYNABOLT SLEEVE ANCHORS REQUIRE A MINIMUM EMBEDMENT OF 1-1/2", A MINIMUM EDGE DISTANCE OF 2-1/4" AND A MINIMUM CENTERLINE OF 4-1/2".
 - 1/4" ITW TAPCONS ANCHORS REQUIRE A MINIMUM EMBEDMENT OF 1-1/4", A MINIMUM EDGE DISTANCE OF 2-1/2" AND A MINIMUM CENTERLINE OF 3".

Documents Prepared By: **RW BUILDING CONSULTANTS, INC.**
 P.O. Box 230 Valrico FL 33595
 Phone No.: 813.659.9197
 Florida Board of Professional Engineers
 Certificate Of Authorization No. 9813
Wendell W. Haney 7/31/07
 Wendell W. Haney, P.E. No. 54158

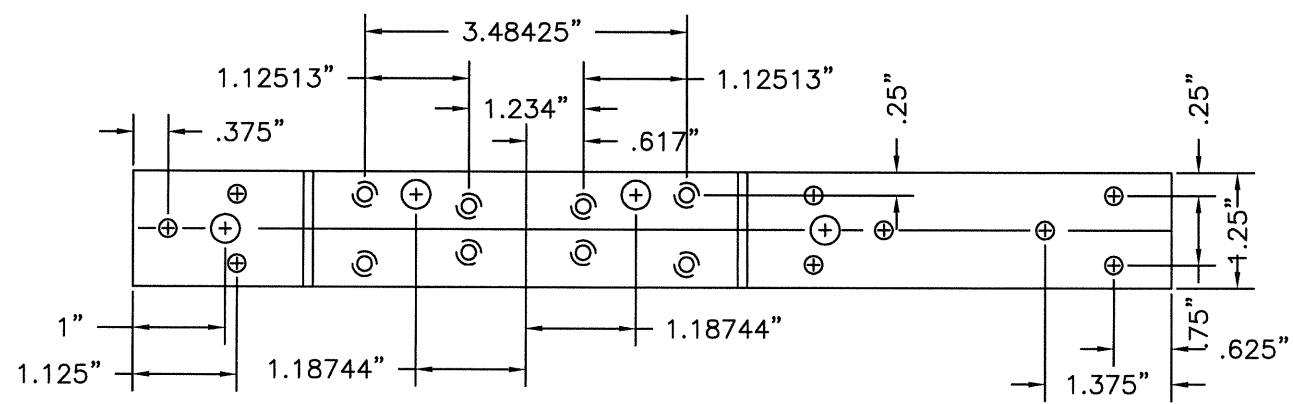
PRODUCT: MESKER 6-0 x 7-0 COMMERCIAL STEEL DOOR IN A H.M.F.
PART OR ASSEMBLY: ANCHORING LOCATIONS & DETAILS

NO.	DATE	BY	REVISIONS
1	7/30/07	EW	REVISED ANCHORING

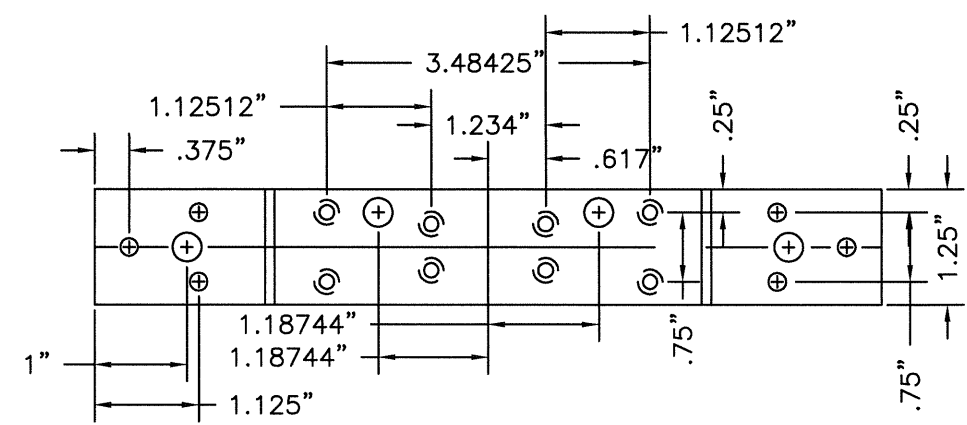
DATE: 06/06/07
 SCALE: N.T.S.
 DWG. BY: TL
 CHK. BY: WWH
 DRAWING NO.: FL-3653
 SHEET 7 of 11

© 2007 R.W. BUILDING CONSULTANTS INC.

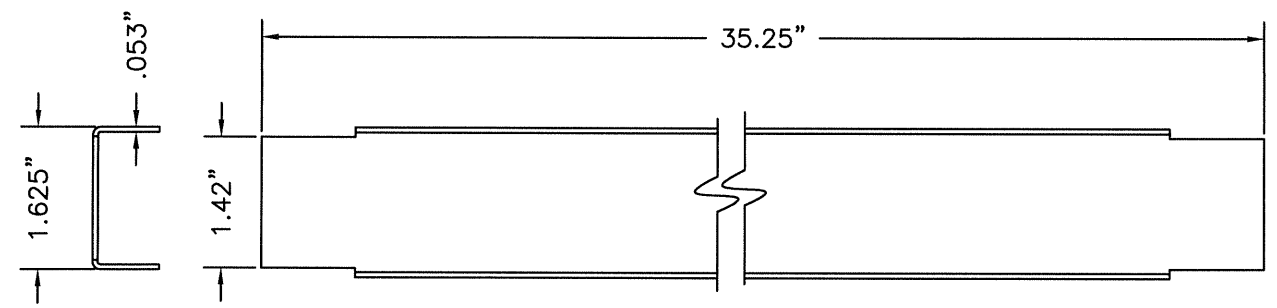
R:\A - Projects\Project Folders\Proj 1201-1300\pf 1235\D. RWBC Drawings\FL-3653-R1\FL-3653-8.dwg, Model



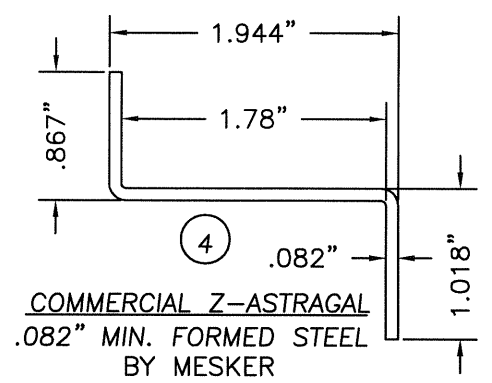
STD. (LONG) DOOR HINGE REIN. (27)
11.0" x 1.25" x .175" (7GA. H.R.S.)
BY MESKER



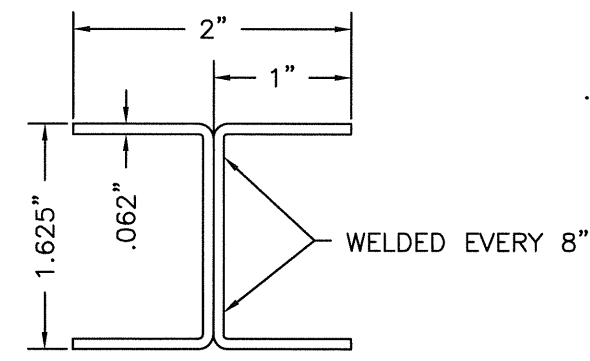
STD. 4 1/2" FRAME HINGE REIN. (14)
8.0" x 1.25" x .175" (7GA. H.R.S.)
A653 GRADE 33 OR BETTER
BY MESKER



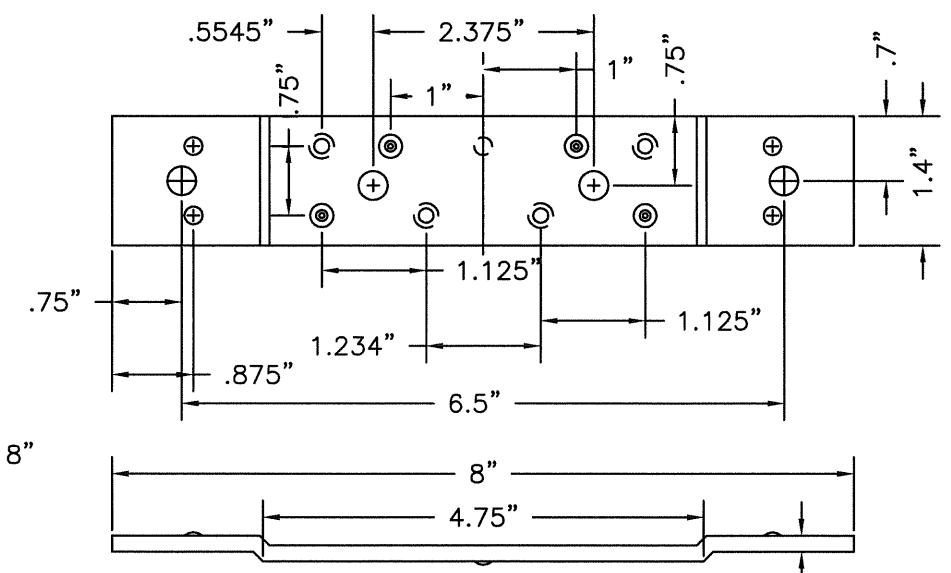
(6) DOOR TOP & BOTTOM CLOSER
16GA. (.053") C.R.S.
BY MESKER



(4) COMMERCIAL Z-ASTRAGAL
.082" MIN. FORMED STEEL
BY MESKER



(29) WELDED I-BEAM
82" LONG x 14GA. C.R.S.
BY MESKER



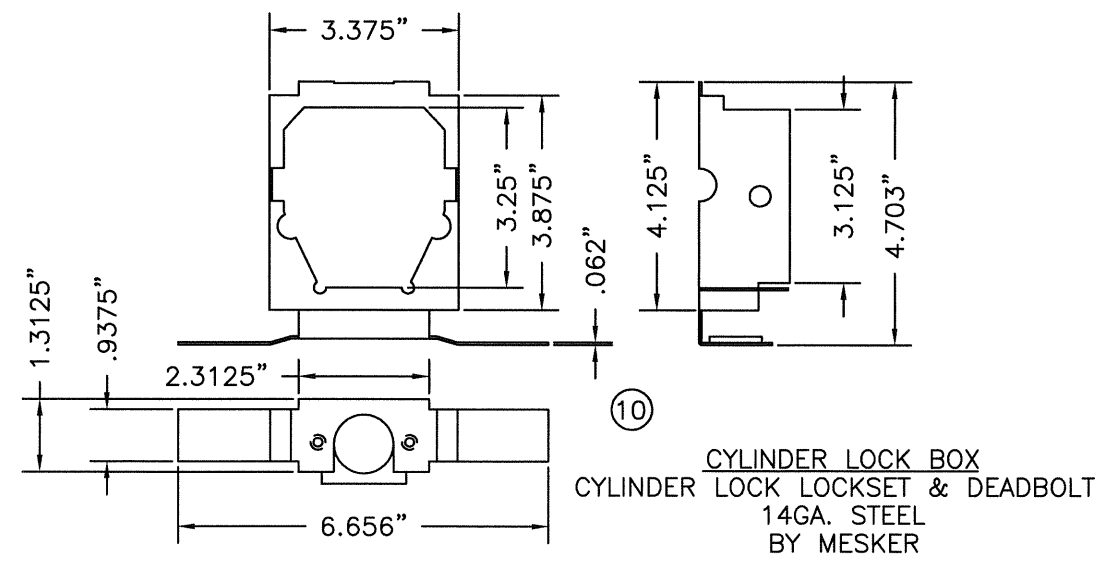
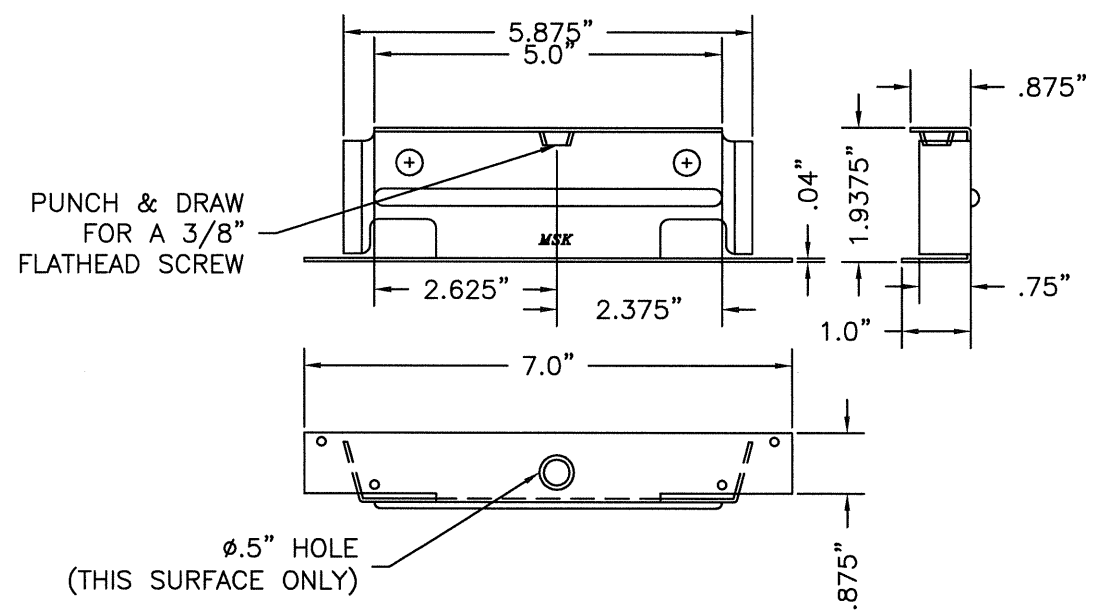
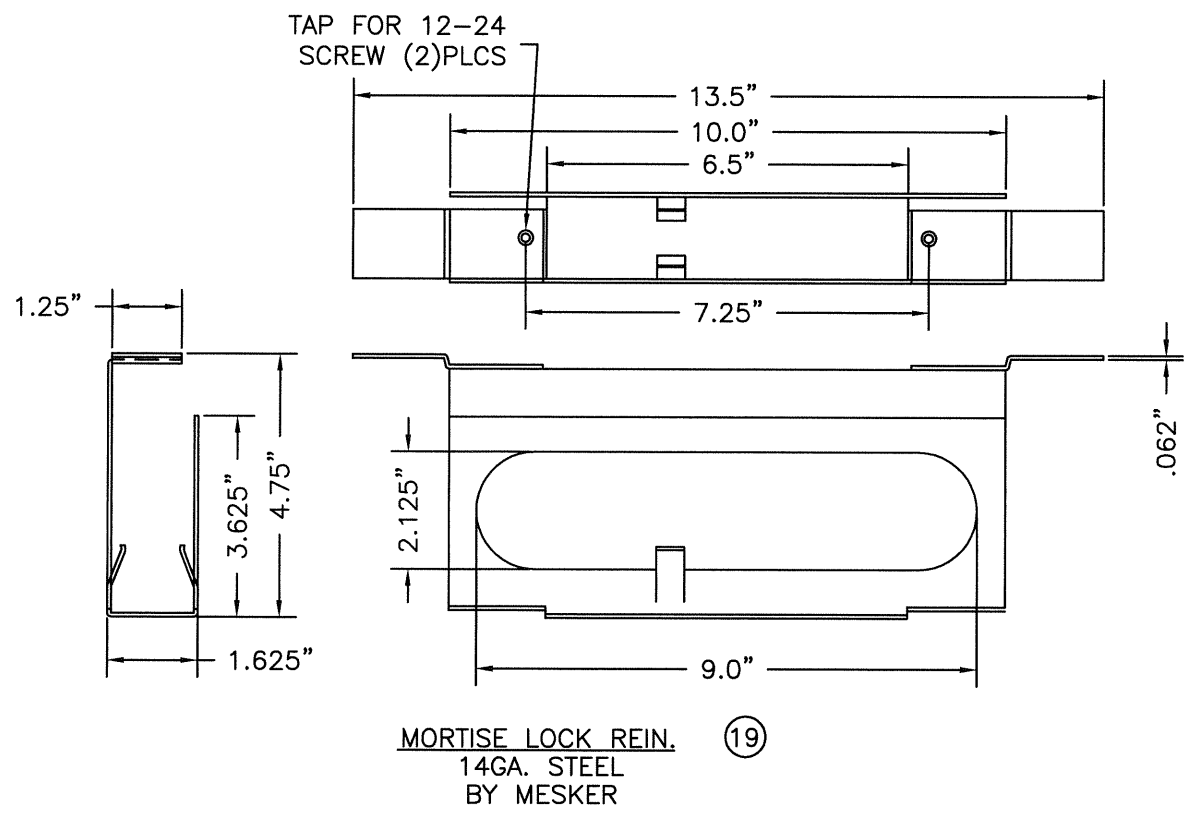
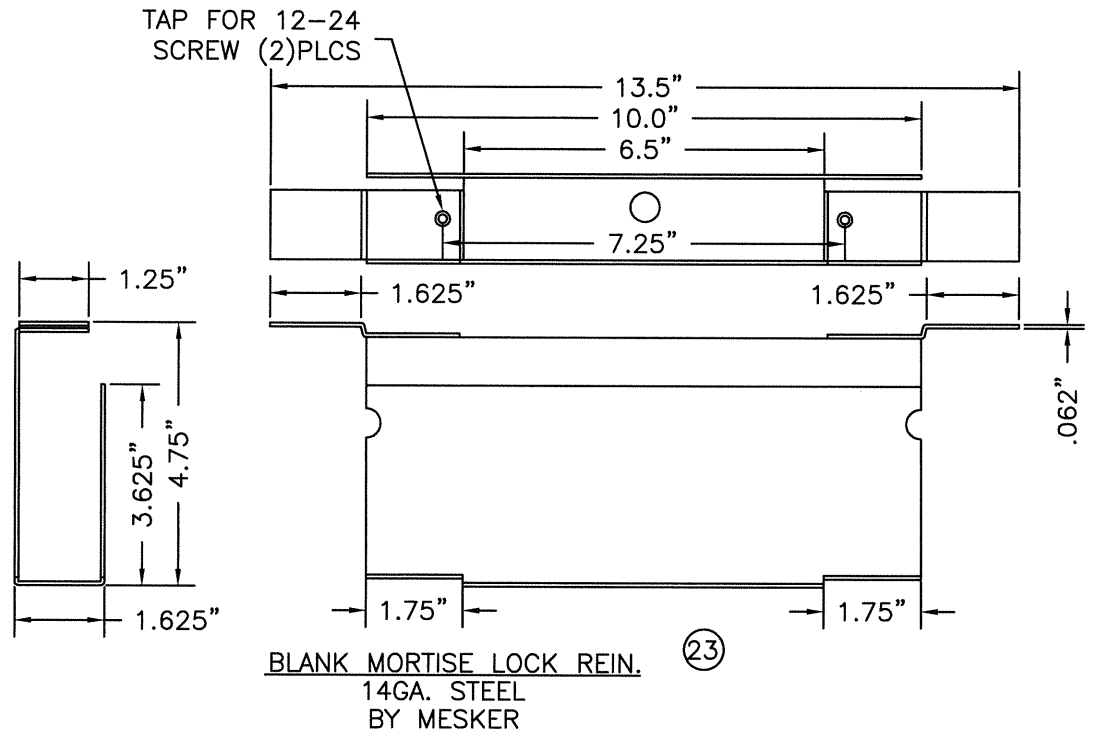
(15) STD. (SHORT) DOOR HINGE REIN.
8.0" x 1.4" x .175" (7GA. H.R.S.)
BY MESKER

Documents Prepared By: **RW** BUILDING CONSULTANTS, INC.
P.O. Box 230 Valrico FL 33595
Phone No.: 813.659.9197
Florida Board of Professional Engineers
Certificate Of Authorization No. 9813
Wendell W. Hapney 7-31-07
Wendell W. Hapney, P.E. No. 54158

PRODUCT:	MESKER 6-0 x 7-0 COMMERCIAL STEEL DOOR IN A H.M.F.	
PART OR ASSEMBLY:	UNIT COMPONENTS	
NO.	DATE	BY
1	7/30/07	EW
		BY
REVISIONS		
DATE:	06/06/07	
SCALE:	N.T.S.	
DWG. BY:	TL	
CHK. BY:	WWH	
DRAWING NO.:	FL-3653	
SHEET	8 OF 11	

© 2007 R.W. BUILDING CONSULTANTS INC.

R:\A - Projects\Project Folders\Proj 1201-1300\pf 1235\DWG Drawings\FL-3653-R1\FL-3653-9.dwg, Model



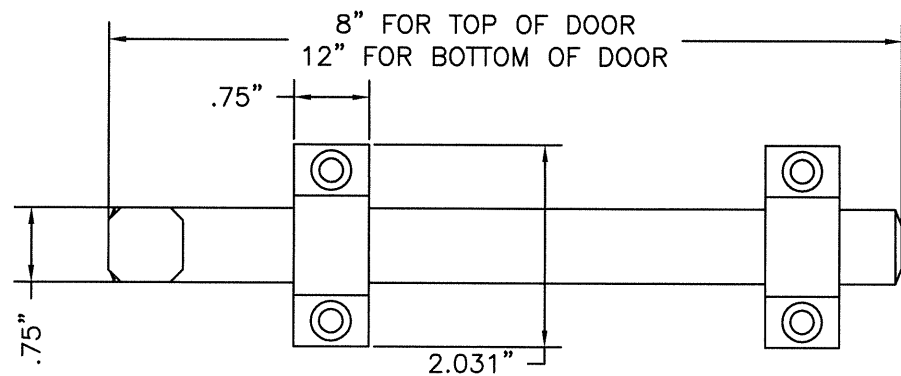
Documents Prepared By: **RW** BUILDING CONSULTANTS, INC.
P.O. Box 230 Valrico FL 33595
Phone No.: 813.659.9197
Florida Board of Professional Engineers
Certificate Of Authorization No. 9813
Wendell W. Hagney, P.E. No. 54158

PRODUCT: MESKER
6-0 x 7-0 COMMERCIAL
STEEL DOOR IN A H.M.F.
PART OR ASSEMBLY: UNIT COMPONENTS

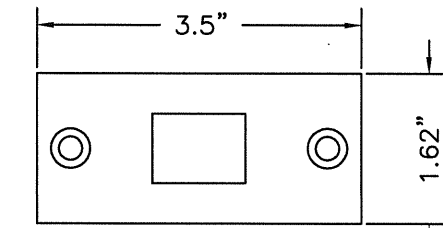
NO.	DATE	REVISIONS	EW	BY
1	7/30/07	REVISED ANCHORING		

DATE: 06/06/07
SCALE: N.T.S.
DWG. BY: TL
CHK. BY: WWH
DRAWING NO.: FL-3653
SHEET 9 OF 11

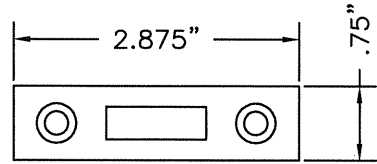
© 2007 R.W. BUILDING CONSULTANTS INC.



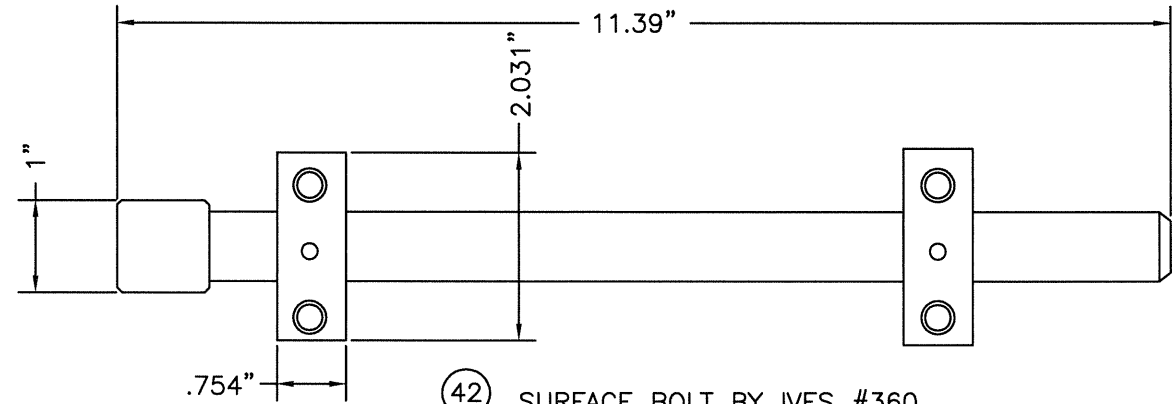
SURFACE BOLT BY HAGER
 (20) 275D 8" L. TOP OF DOOR
 (24) 276D 12" L. BOTTOM OF DOOR



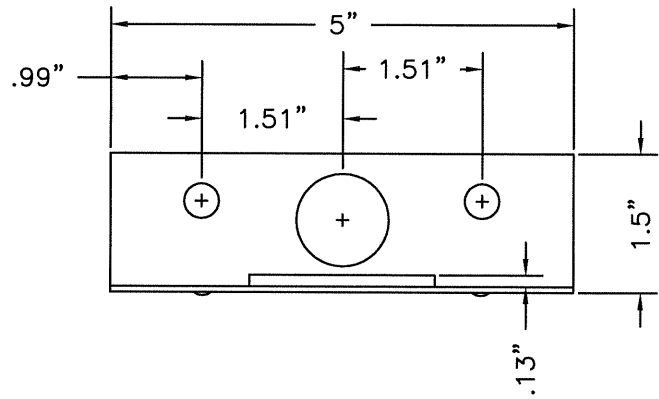
SURFACE BOLT STRIKE PLATE
 USED WITH ITEM #42



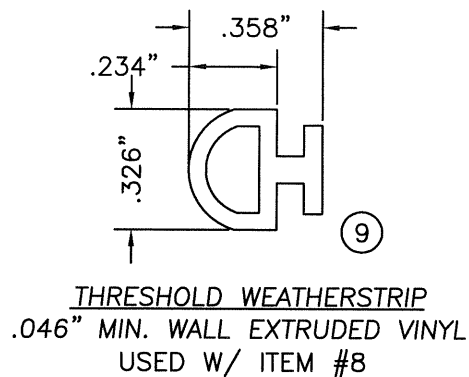
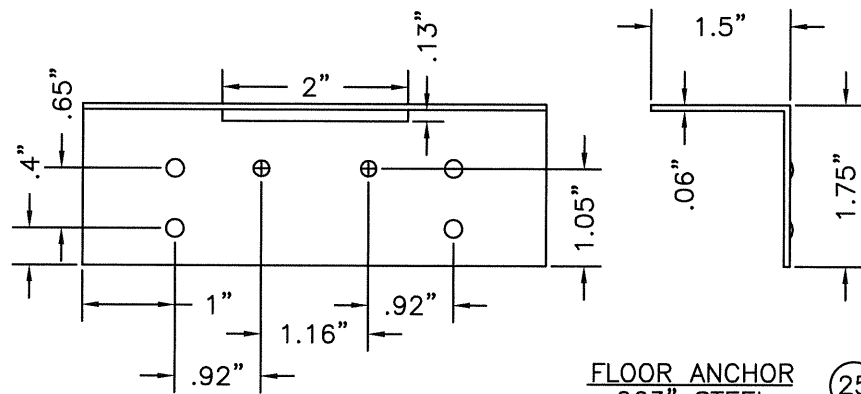
SURFACE BOLT STRIKE PLATE
 USED WITH ITEMS #20 & #24



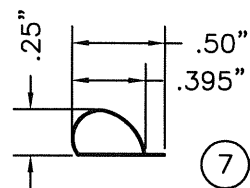
(42) SURFACE BOLT BY IVES #360



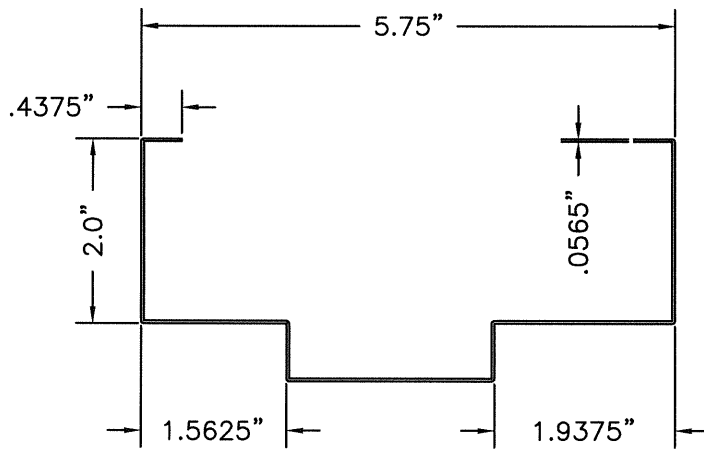
FLOOR ANCHOR
 .063" STEEL
 BY MESKER (25)



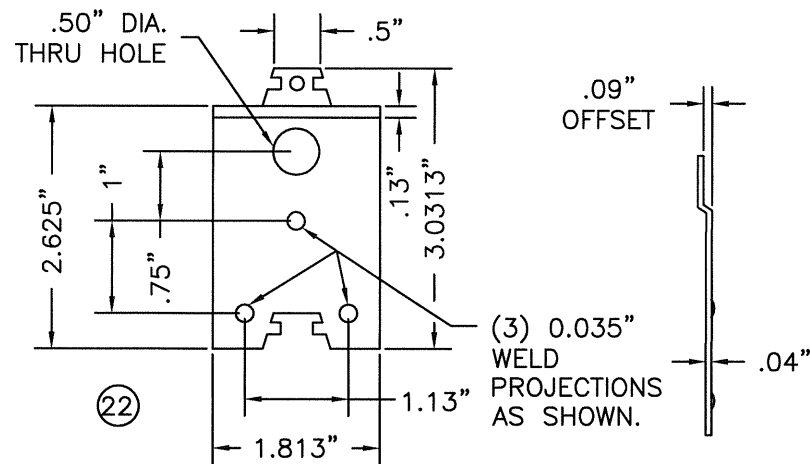
THRESHOLD WEATHERSTRIP
 .046" MIN. WALL EXTRUDED VINYL
 USED W/ ITEM #8



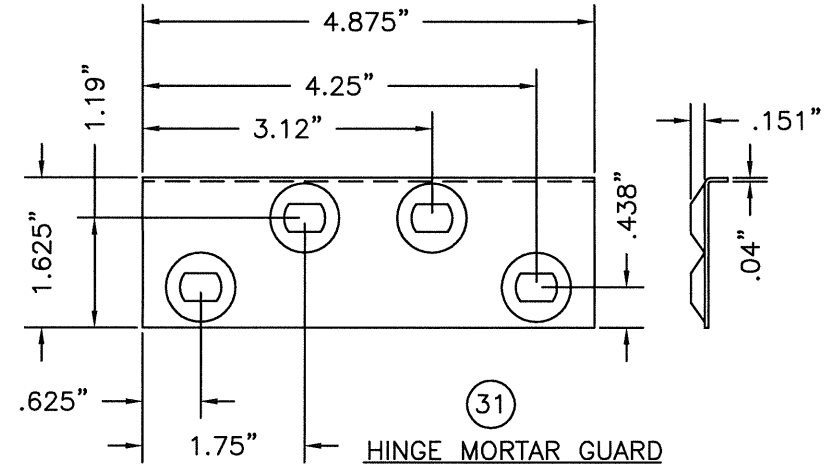
STICK ON FRAME WEATHERSTRIP
 PEMKO S88D, HIGH TEMP. SILICONE (7)



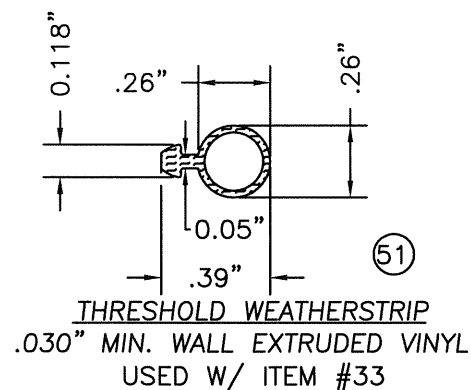
5 3/4" HOLLOW METAL FRAME
 16GA. (.0565" MIN.) C.R.S.
 BY MESKER (3) (5)



FRAME TAB (GUSSET)
 18GA. C.R.S.
 BY MESKER



(31) HINGE MORTAR GUARD
FRAME HINGE JAMB
 .040" THK STEEL
 BY MESKER



THRESHOLD WEATHERSTRIP
 .030" MIN. WALL EXTRUDED VINYL
 USED W/ ITEM #33 (51)

Documents Prepared By:

RW BUILDING CONSULTANTS, INC.
 P.O. Box 230 Valrico FL 33595
 Phone No.: 813.659.9197
 Florida Board of Professional Engineers
 Certificate Of Authorization No. 9813
 Wendell W. Harney, P.E. No. 54158

PRODUCT: MESKER
 6-0 x 7-0 COMMERCIAL
 STEEL DOOR IN A H.M.F.

PART OR ASSEMBLY:
 UNIT COMPONENTS

NO.	DATE	REVISION ANCHORING	EW	BY
1	7/30/07			

REVISIONS

DATE: 06/06/07

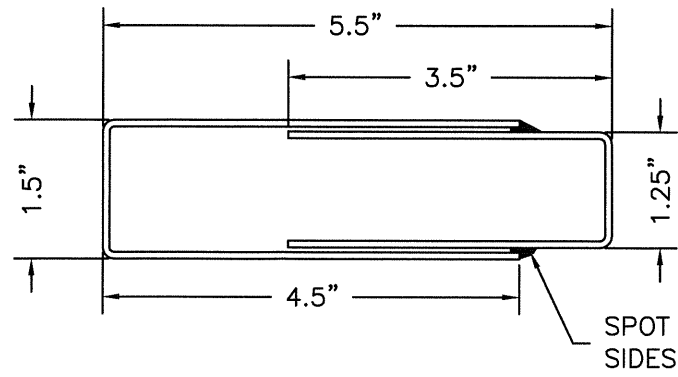
SCALE: N.T.S.

DWG. BY: TL

CHK. BY: WWH

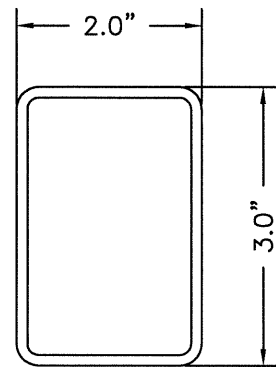
DRAWING NO.: FL-3653

SHEET 10 of 11

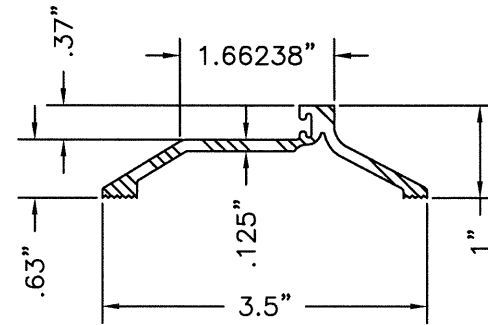


49 PRIMETER REINFORCEMENT
.072" THK. C.R.S.
BY MESKER

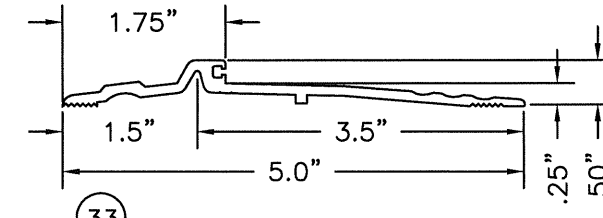
TOP & BOTTOM RAIL LENGTH = 34.6875"
SIDE STILE LENGTH = 71.5"



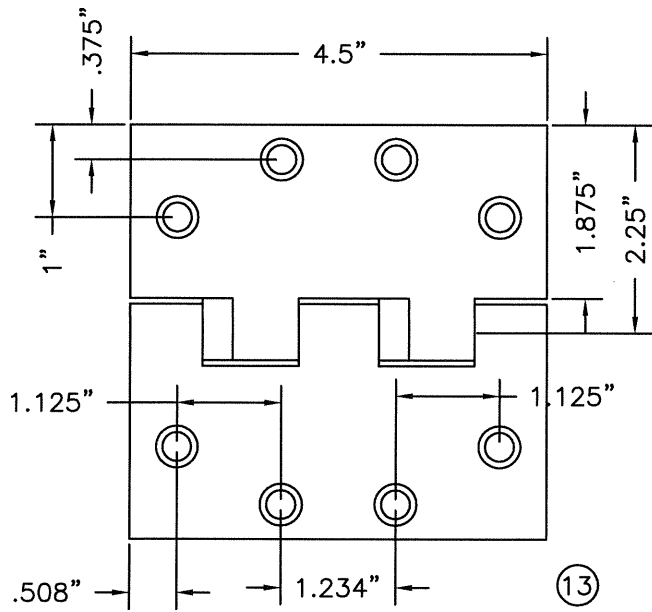
45 DORMA F1300 FIRE MULLION
2" x 3" x .122" THK. STEEL



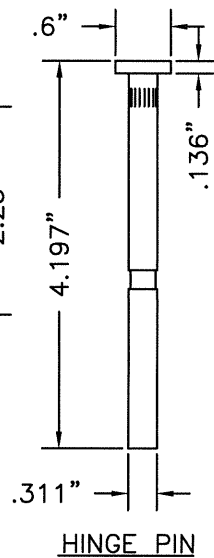
8 BUMPFACE THRESHOLD
.125" EXTRUDED ALUM.
NATIONAL GUARD PRODUCTS INC.
#891V, 6063-T6 ALUM.



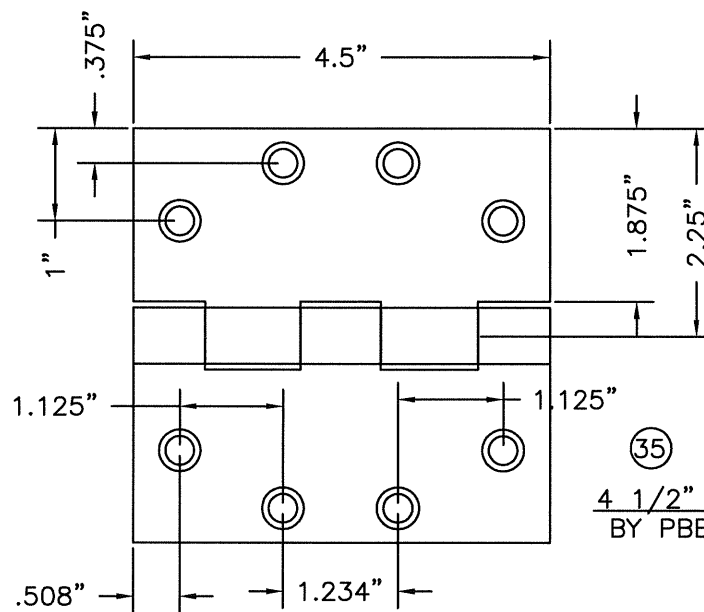
33 PANIC THRESHOLD NATIONAL GUARD
PRODUCTS NGP 896 .105" ALUM. WALL



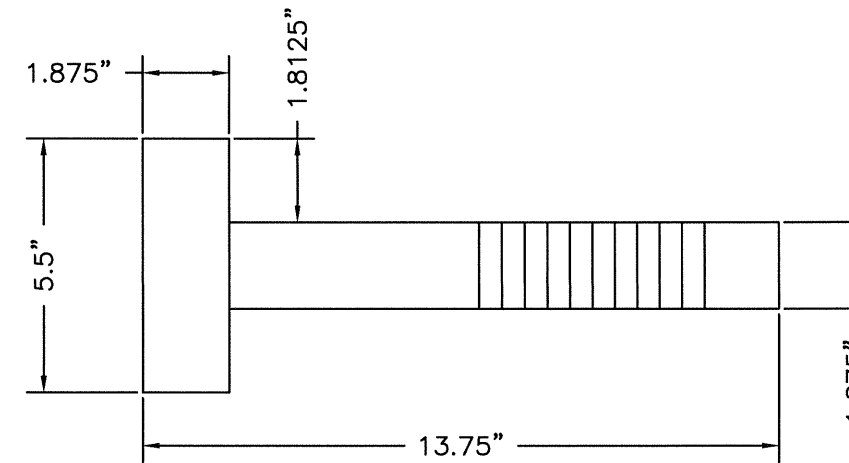
13 4 1/2" TEMPLATE HINGE
BY HAGER .134" THK. STEEL



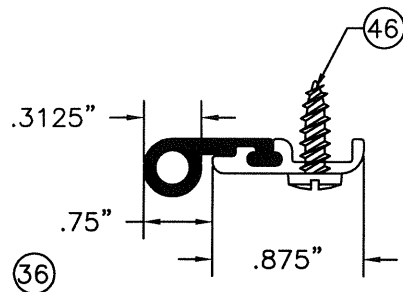
HINGE PIN



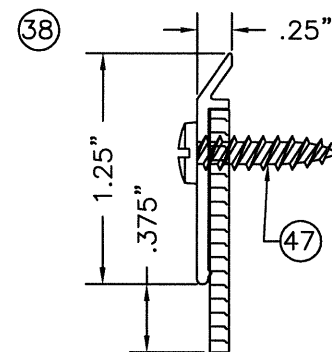
35 4 1/2" TEMPLATE HINGE
BY PBB .135" STEEL



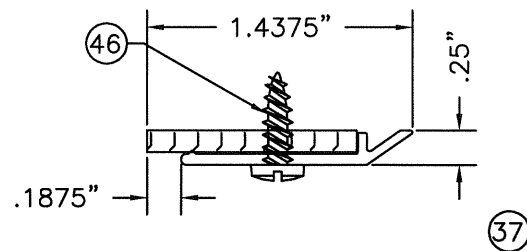
11 MASONRY 'TEE' ANCHOR
.050" THK. STEEL
BY MESKER



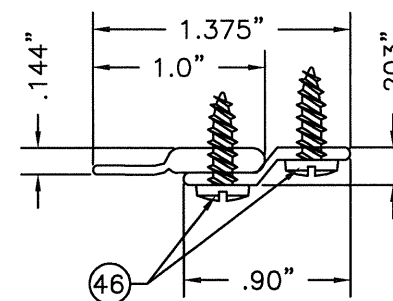
36 SURFACE MOUNTED FRAME
WEATHERSTRIP
NATIONAL GUARD PRODUCTS #137SA



38 SURFACE MOUNTED DOOR
BOTTOM SWEEP
NATIONAL GUARD PRODUCTS #200SA



37 SURFACE MOUNTED FRAME
WEATHERSTRIP
NATIONAL GUARD PRODUCTS #130NA



39 SURFACE MOUNTED FRAME
WEATHERSTRIP
NATIONAL GUARD PRODUCTS #9125A

Documents Prepared By:

RW BUILDING CONSULTANTS, INC.
P.O. Box 230 Valrico FL 33595
Phone No.: 813.659.9197
Florida Board of Professional Engineers
Certificate Of Authorization No. 9813
Wendell W. Haney 7-31-07
Wendell W. Haney, P.E. No. 54158

PRODUCT: MESKER
6-0 x 7-0 COMMERCIAL
STEEL DOOR IN A H.M.F.

PART OR ASSEMBLY:
UNIT COMPONENTS

NO.	DATE	REVISIONS	EW	BY
1	7/30/07	REVISED ANCHORING		

DATE: 06/06/07

SCALE: N.T.S.

DWG. BY: TL

CHK. BY: WWH

DRAWING NO.:

FL-3653

SHEET 11 OF 11